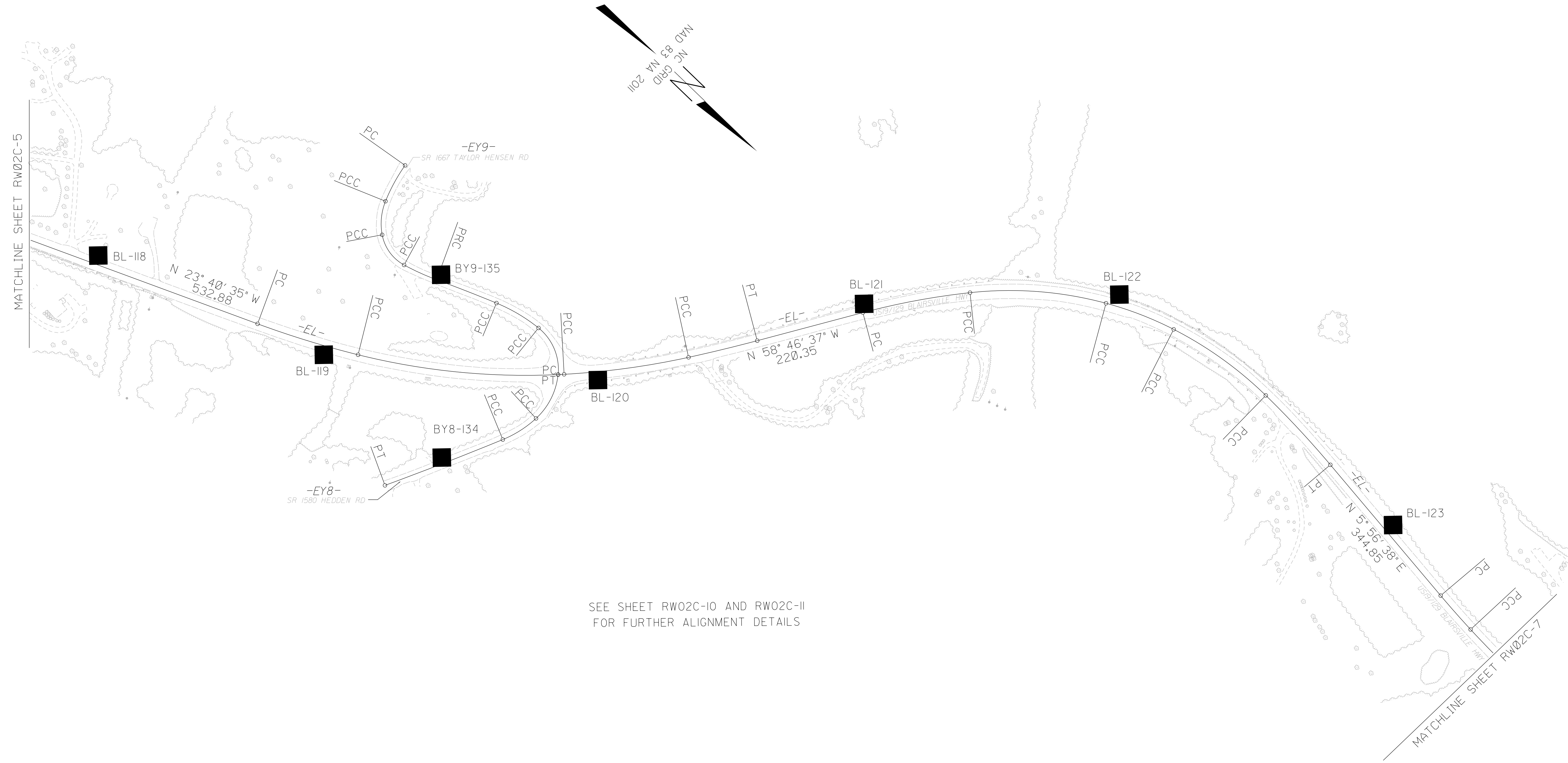
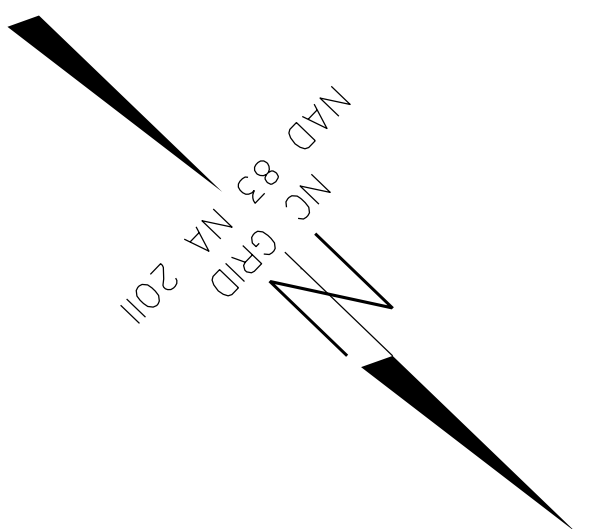


# SURVEY CONTROL SHEET

## W/EXISTING CENTERLINE ALIGNMENTS PRIOR TO CONSTRUCTION



SEE SHEET RW02C-10 AND RW02C-11  
FOR FURTHER ALIGNMENT DETAILS

- NOTES:**
- PROJECT CONTROL WAS ESTABLISHED USING GNSS, THE GLOBAL NAVIGATION SATELLITE SYSTEM.
  - THE SURVEY CONTROL DATA FOR THIS PROJECT HAS BEEN COMPILED FROM VARIOUS SOURCES. IF FURTHER INFORMATION REGARDING PROJECT CONTROL IS NEEDED, PLEASE CONTACT THE LOCATION AND SURVEYS UNIT.

6/2/09

REVISIONS

10-AUG-2010 09:08  
 C:\jw\work\Projects\Checked Work\RW Sheets\Finished\5861 WET\To Send\5861-1s-rw02c-6.dgn  
 Cabarrus\11-01-10-31-10