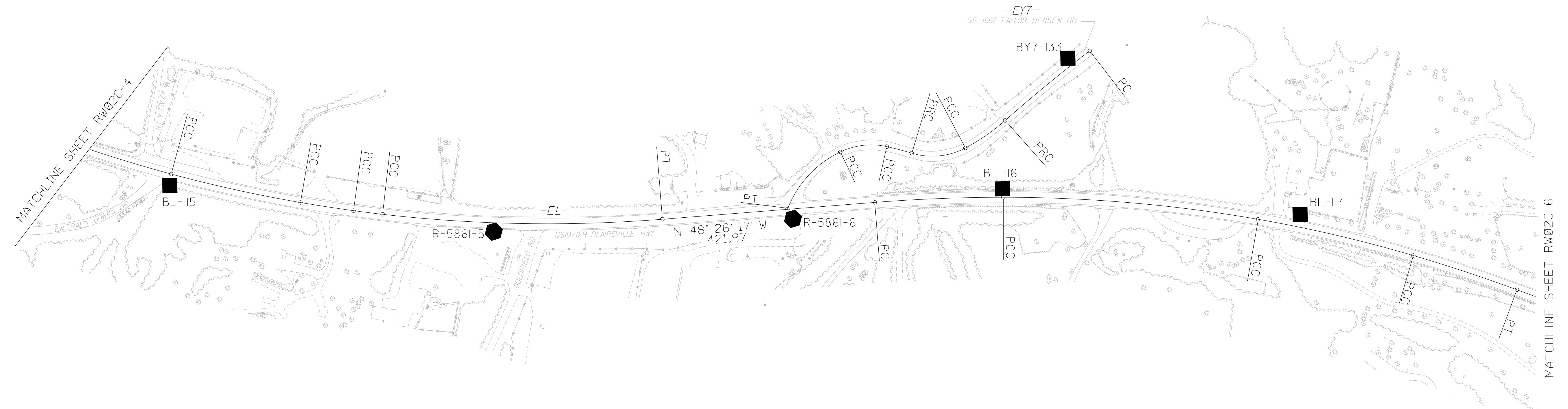
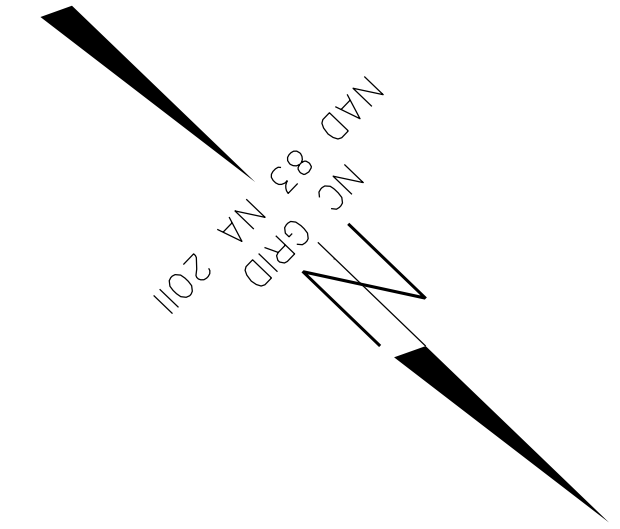


# SURVEY CONTROL SHEET

**W/ EXISTING CENTERLINE ALIGNMENTS PRIOR TO CONSTRUCTION**



SEE SHEET RW02C-10 AND RW02C-11  
FOR FURTHER ALIGNMENT DETAILS

**NOTES:**

1. PROJECT CONTROL WAS ESTABLISHED USING GNSS, THE GLOBAL NAVIGATION SATELLITE SYSTEM.
2. THE SURVEY CONTROL DATA FOR THIS PROJECT HAS BEEN COMPILED FROM VARIOUS SOURCES. IF FURTHER INFORMATION REGARDING PROJECT CONTROL IS NEEDED, PLEASE CONTACT THE LOCATION AND SURVEYS UNIT.

6/2/19

REVISIONS

10-AUG-2020 09:06  
 C:\jw\Company\Projects\Checked Work\NRW Sheets\Finished\5861 WET\To Send\5861-5.dgn  
 5861-5.dgn