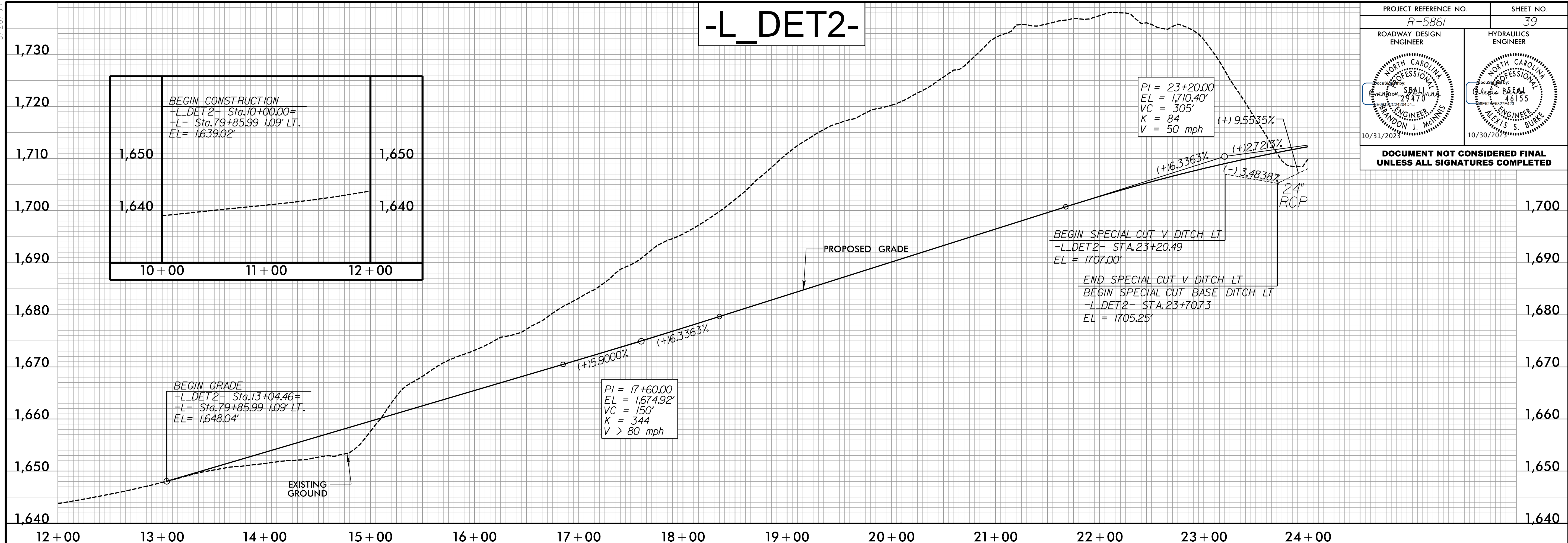


5/28/24

-L_DET2-

PROJECT REFERENCE NO. R-5861	SHEET NO. 39
ROADWAY DESIGN ENGINEER	HYDRAULICS ENGINEER

DOCUMENT NOT CONSIDERED FINAL UNLESS ALL SIGNATURES COMPLETED



BEGIN CONSTRUCTION -L_DET2- Sta.10+00.00= -L- Sta.79+85.99 1.09' LT. EL= 1,639.02'		
1,650		1,650
1,640		1,640
10+00	11+00	12+00

PI = 23+20.00
EL = 1,710.40'
VC = 305'
K = 84
V = 50 mph

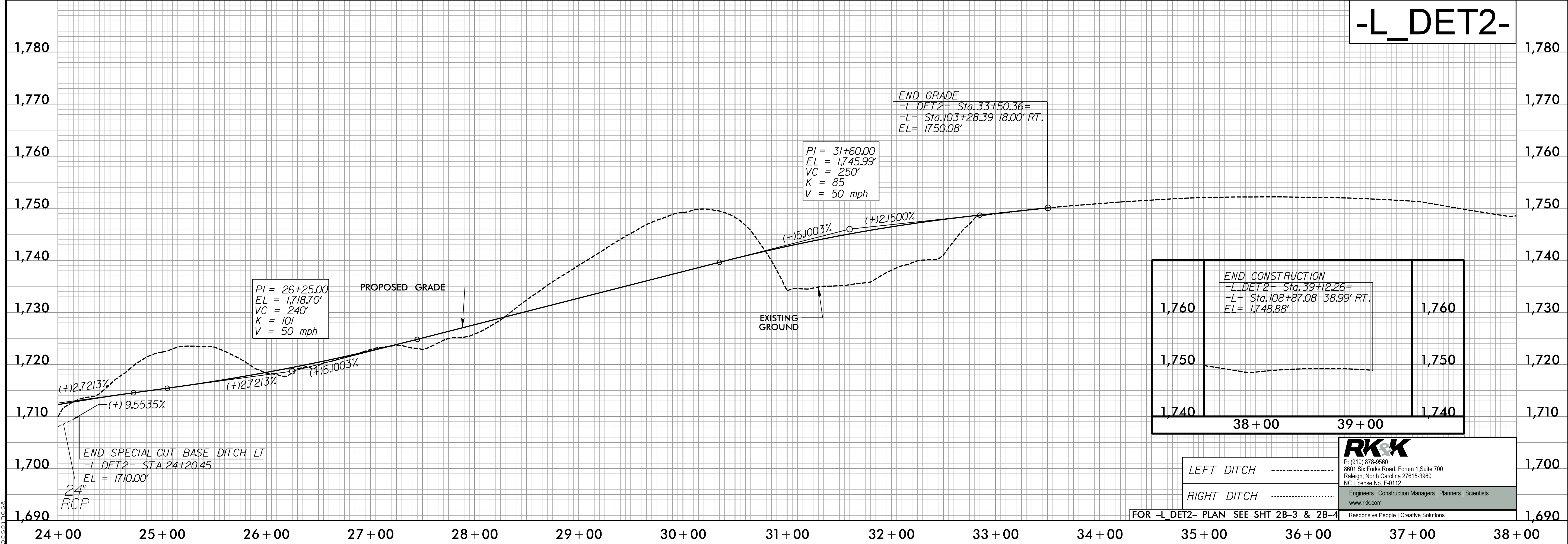
PI = 17+60.00
EL = 1,674.92'
VC = 150'
K = 344
V > 80 mph

BEGIN GRADE
-L_DET2- Sta.13+04.46=
-L- Sta.79+85.99 1.09' LT.
EL= 1,648.04'

BEGIN SPECIAL CUT V DITCH LT
-L_DET2- STA.23+20.49
EL = 1,707.00'

END SPECIAL CUT V DITCH LT
BEGIN SPECIAL CUT BASE DITCH LT
-L_DET2- STA.23+70.73
EL = 1,705.25'

-L_DET2-



END CONSTRUCTION -L_DET2- Sta.39+12.26= -L- Sta.108+87.08 38.99' RT. EL= 1,748.88'		
1,760		1,760
1,750		1,750
1,740		1,740
38+00	39+00	

PI = 31+60.00
EL = 1,745.99'
VC = 250'
K = 85
V = 50 mph

PI = 26+25.00
EL = 1,718.70'
VC = 240'
K = 101
V = 50 mph

END SPECIAL CUT BASE DITCH LT
-L_DET2- STA.24+20.45
EL = 1,710.00'
24\"/>

LEFT DITCH
RIGHT DITCH

RKK
P: (919) 978-9550
8601 Six Forks Road, Forum 1, Suite 700
Raleigh, North Carolina 27615-3960
NC License No. F-0112
Engineers | Construction Managers | Planners | Scientists
www.rkk.com
Responsive People | Creative Solutions

FOR -L_DET2- PLAN SEE SHT 2B-3 & 2B-4

10/16/2023
R:\62064\Proje\5861-Rdwy-pl\39.dgn
BES000003