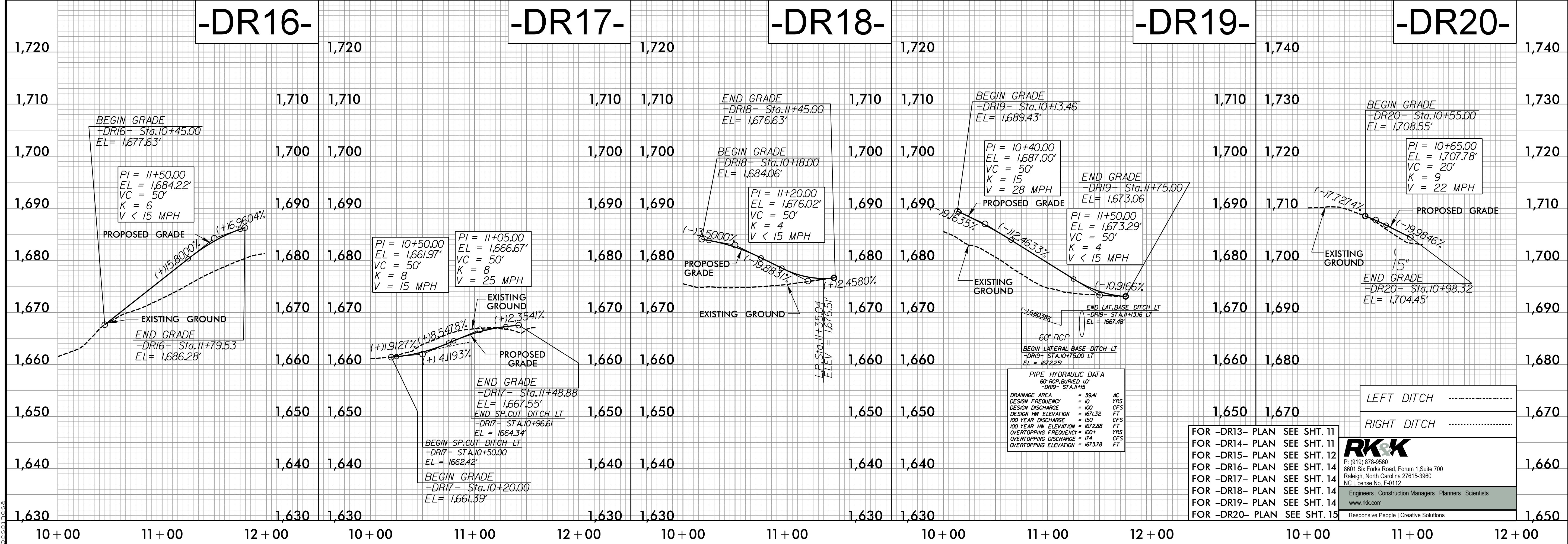
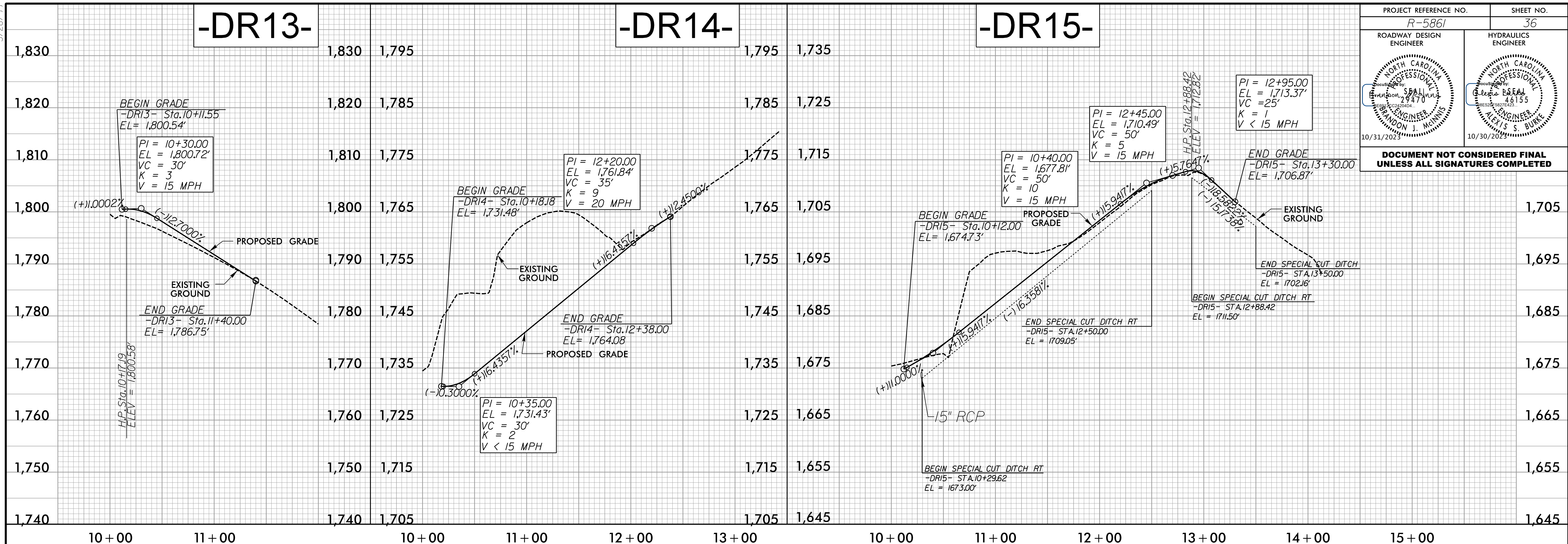


5/28/2023

10/6/2023
R:\62062\Projects\158661-Rdy-p\136.dgn

PROJECT REFERENCE NO. R-5861	SHEET NO. 36
ROADWAY DESIGN ENGINEER 	HYDRAULICS ENGINEER

DOCUMENT NOT CONSIDERED FINAL
UNLESS ALL SIGNATURES COMPLETED



PIPE HYDRAULIC DATA
 60" RCP BURIED 12"
 -DR13- STA.11+15

DRAINAGE AREA	= 39.41	AC
DESIGN FREQUENCY	= 10	YRS
DESIGN DISCHARGE	= 100	CFS
DESIGN HW ELEVATION	= 1671.32	FT
100 YEAR DISCHARGE	= 150	CFS
100 YEAR HW ELEVATION	= 1672.88	FT
OVERTOPPING FREQUENCY	= 100+	YRS
OVERTOPPING DISCHARGE	= 174	CFS
OVERTOPPING ELEVATION	= 1673.78	FT

FOR -DR13- PLAN SEE SHT. 11
 FOR -DR14- PLAN SEE SHT. 11
 FOR -DR15- PLAN SEE SHT. 12
 FOR -DR16- PLAN SEE SHT. 14
 FOR -DR17- PLAN SEE SHT. 14
 FOR -DR18- PLAN SEE SHT. 14
 FOR -DR19- PLAN SEE SHT. 14
 FOR -DR20- PLAN SEE SHT. 15

LEFT DITCH
 RIGHT DITCH

RK&K
 P: (919) 978-9560
 8601 Six Forks Road, Forum 1, Suite 700
 Raleigh, North Carolina 27615-3960
 NC License No. F-0112
 Engineers | Construction Managers | Planners | Scientists
 www.rkk.com
 Responsive People | Creative Solutions