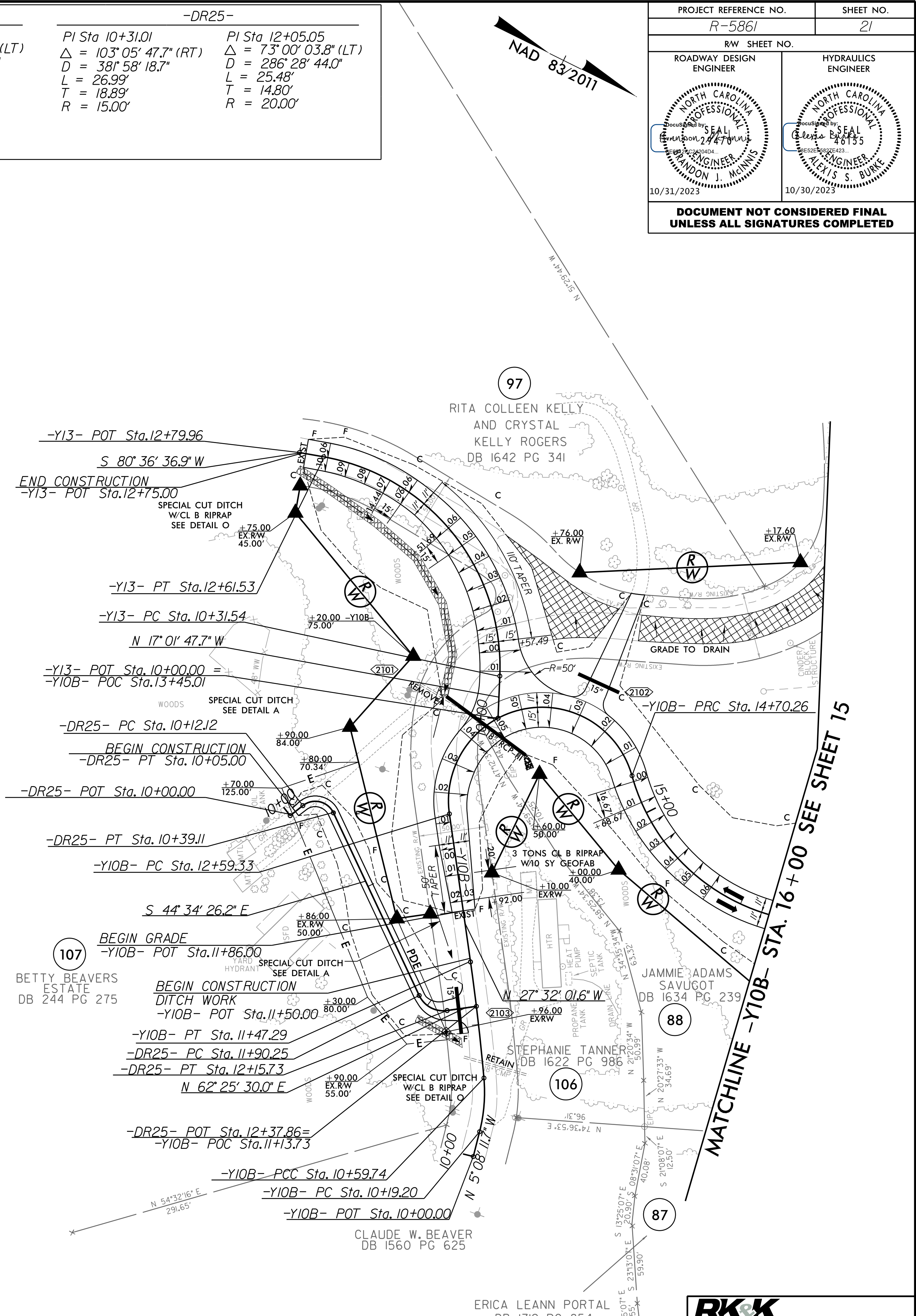


PROJECT REFERENCE NO. R-5861	SHEET NO. 21
RW SHEET NO.	
ROADWAY DESIGN ENGINEER	HYDRAULICS ENGINEER
DOCUMENT NOT CONSIDERED FINAL UNLESS ALL SIGNATURES COMPLETED	

-Y10B-				-Y13-	-DR25-	
PI Sta 10+39.67	PI Sta 11+03.53	PI Sta 23+48.57	PI Sta 18+53.23	PI Sta 11+71.51	PI Sta 10+31.01	PI Sta 12+05.05
$\Delta = 19^\circ 21' 25.9" (LT)$	$\Delta = 3^\circ 02' 24.0" (LT)$	$\Delta = 17^\circ 38' 45.0" (RT)$	$\Delta = 137^\circ 13' 19.0" (LT)$	$\Delta = 82^\circ 21' 35.4" (LT)$	$\Delta = 103^\circ 05' 47.7" (RT)$	$\Delta = 73^\circ 00' 03.8" (LT)$
D = 47' 44" 47.3"	D = 3' 28" 20.9"	D = 81' 51" 04.0"	D = 38' 11" 49.9"	D = 35' 48" 35.5"	D = 381' 58" 18.7"	D = 286' 28" 44.0"
L = 40.54'	L = 87.55'	L = 210.93'	L = 359.25'	L = 229.99'	L = 26.99'	L = 25.48'
T = 20.47'	T = 43.78'	T = 1,089.23'	T = 382.97'	T = 139.97'	T = 18.89'	T = 14.80'
R = 120.00'	R = 1,650.00'	R = 70.00'	R = 150.00'	R = 160.00'	R = 15.00'	R = 20.00'
		SE = 0.06	SE = 0.06	SE = 0.06		
		RO = 120'	RO = 100'	RO = 90'		
		DS = 15 MPH	DS = 25 MPH	DS = 20 MPH		



NOTES: ALL DRIVES ARE 16' WIDE WITH 10' RADII UNLESS OTHERWISE NOTED.

FOR -Y10B- PROFILE SEE SHT. 32
 FOR -Y13- PROFILE SEE SHT. 34
 FOR -DR25- PROFILE SEE SHT. 37
 FOR DITCH DETAILS SEE SHT. 2D-1 & 2D-2

P: (919) 878-8560
 8601 Six Forks Road, Forum 1 Suite 700
 Raleigh, North Carolina 27615-3960
 NC License No. F-0112
 Engineers | Construction Managers | Planners | Scientists
 www.rkk.com
 Responsive People | Creative Solutions

8/17/199
 10/16/2023
 P:\Projects\195861_Rdy_psh21.dgn