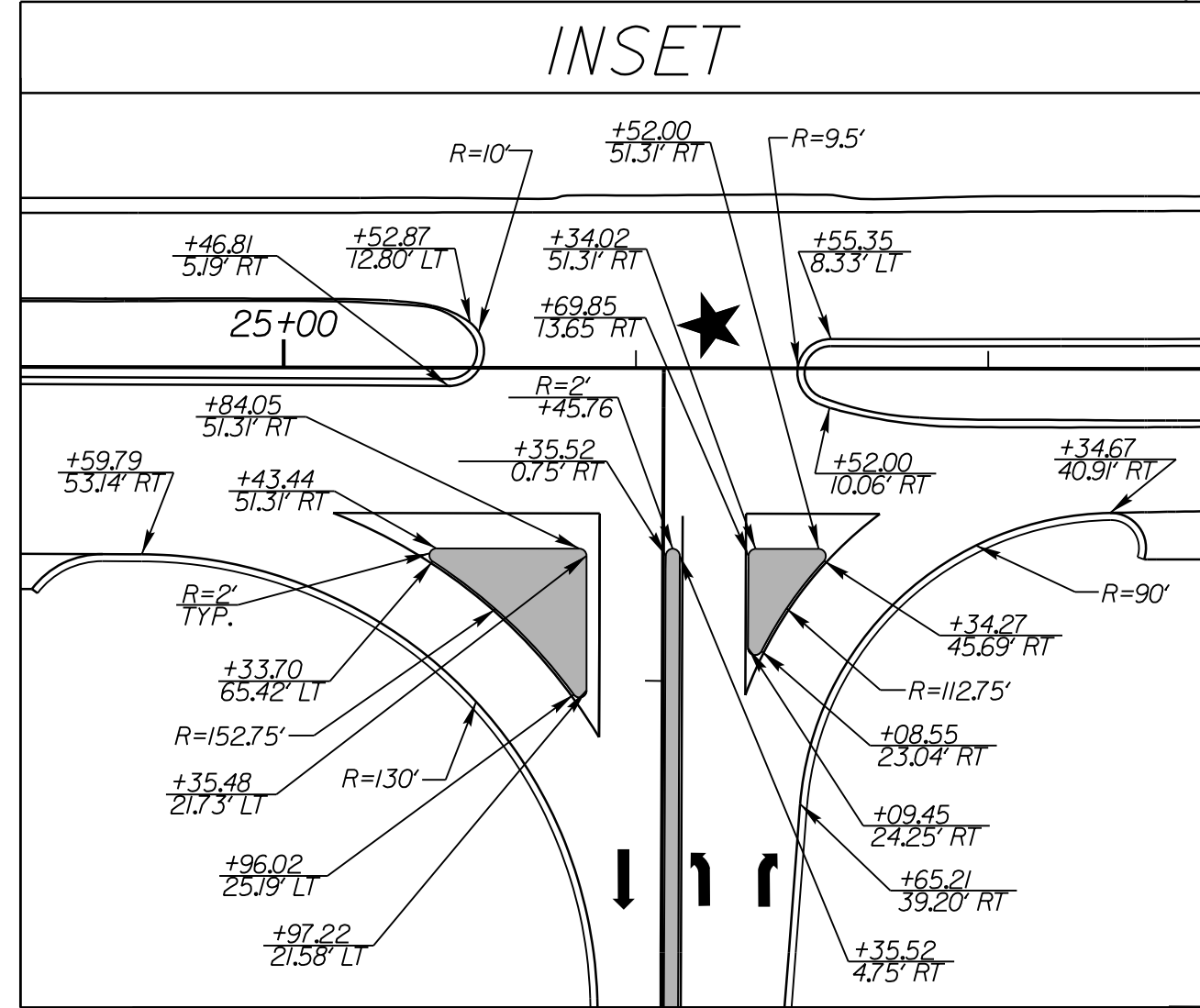
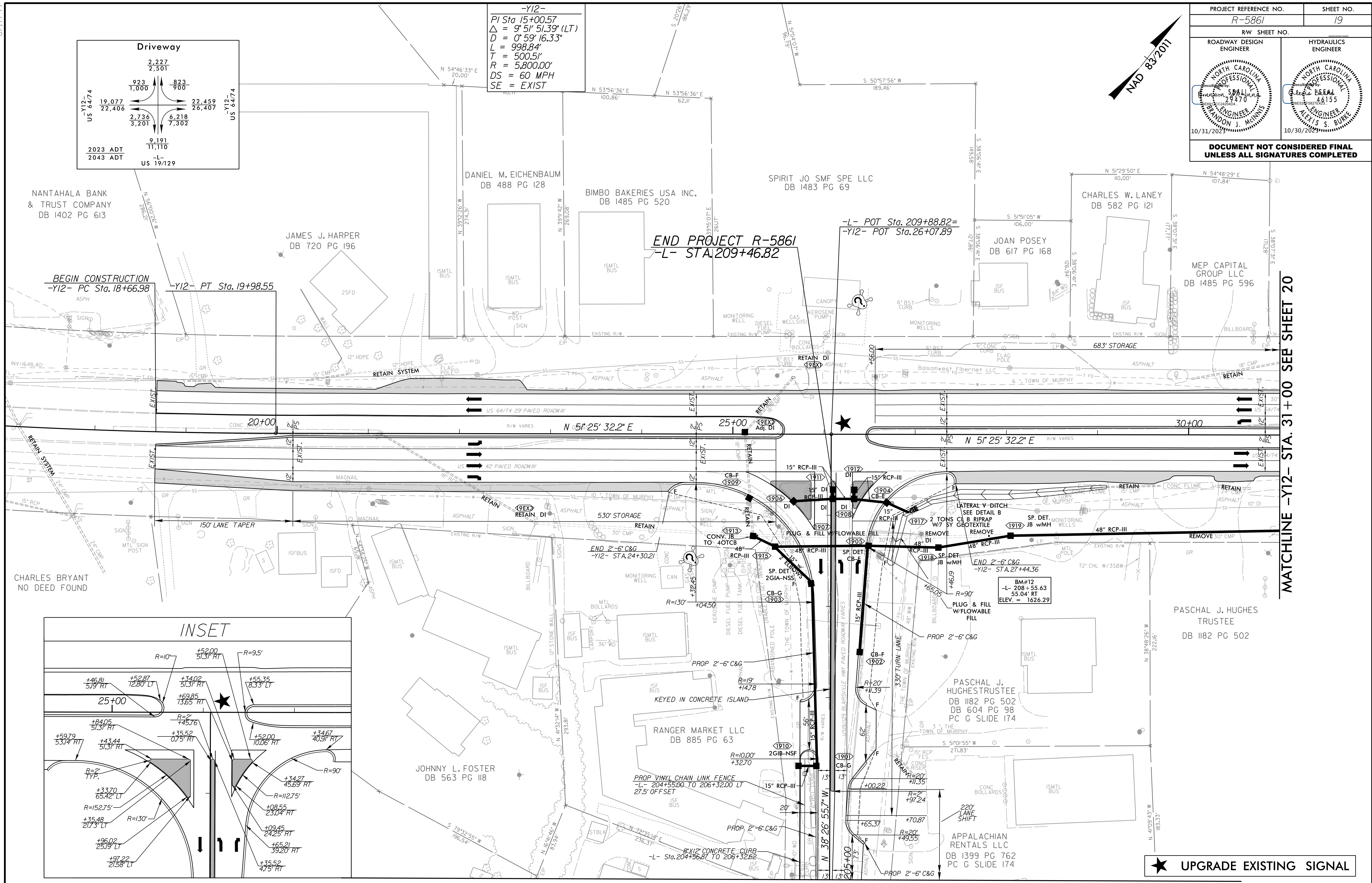


-Y12-
PI Sta 15+00.57
 $\Delta = 9^{\circ} 51' 51.39" (LT)$
 $D = 0^{\circ} 59' 16.33"$
 $L = 998.84'$
 $T = 500.51'$
 $R = 5,800.00'$
 $DS = 60 MPH$
 $SE = EXIST$



KEYED IN CONCRETE ISLAND

END PROJECT R-5861
-L- STA. 209+46.82

-L- POT Sta. 209+88.82=
-Y12- POT Sta. 26+07.89

MATCHLINE -Y12- STA. 31+00 SEE SHEET 20

MATCHLINE -L- STA. 205+00 SEE SHEET 18

NOTES: ALL DRIVES ARE 16' WIDE WITH
10' RADII UNLESS OTHERWISE NOTED.

NOTES: OVERLAY PAVED SHOULDERS
-Y12- STA. 18+66.98 TO 31+00.00

FOR -Y12- PROFILE SEE SHT. 33
FOR -L- PROFILE SEE SHT. 29
FOR DITCH DETAILS SEE SHT. 2D-1 & 2D-2

RK&K
P: (919) 878-9560
8601 Six Forks Road, Forum 1, Suite 700
Raleigh, North Carolina 27615-3960
NC License No. F-0112
Engineers | Construction Managers | Planners | Scientists
www.rk&k.com
Responsive People | Creative Solutions

8/17/2023
C:\Users\jrp\OneDrive\Documents\Projects\2023\19-Roadway\19-Roadway\19-Roadway.dwg
10/23/2023
C:\Users\jrp\OneDrive\Documents\Projects\2023\19-Roadway\19-Roadway\19-Roadway.dwg