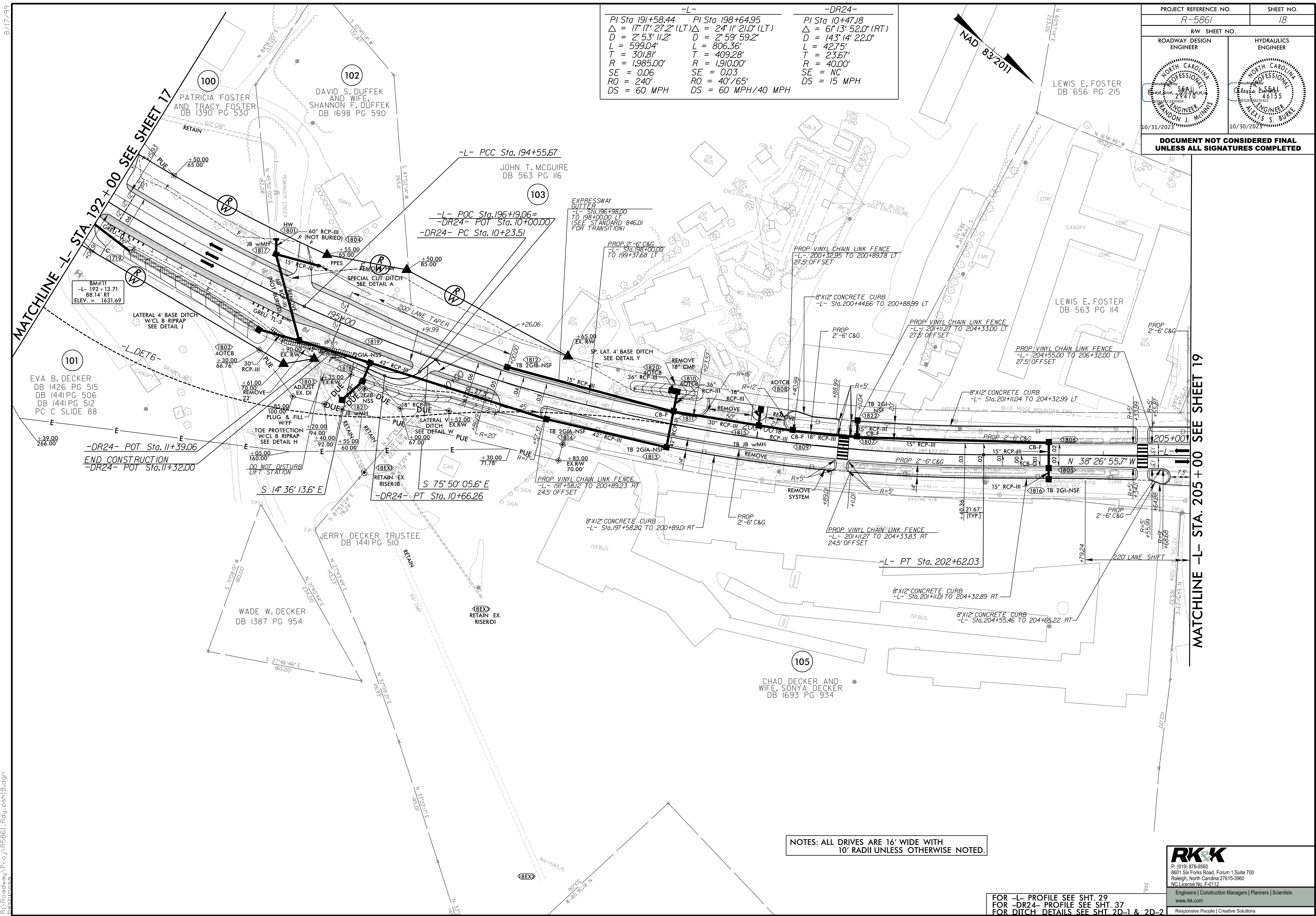


8/17/199

PROJECT REFERENCE NO. R-5861		SHEET NO. 18	
ROADWAY DESIGN ENGINEER		HYDRAULICS ENGINEER	
DOCUMENT NOT CONSIDERED FINAL UNLESS ALL SIGNATURES COMPLETED			

-L-		-DR24-	
PI Sta 191+58.44	PI Sta 198+64.95	PI Sta 10+47.18	
$\Delta = 17' 17" 27.2" (LT)$	$\Delta = 24' 11" 21.0" (LT)$	$\Delta = 61' 13" 52.0" (RT)$	
D = 2' 53' 11.2"	D = 2' 59' 59.2"	D = 143' 14' 22.0"	
L = 599.04'	L = 806.36'	L = 42.75'	
T = 301.81'	T = 409.28'	T = 23.67'	
R = 1,985.00'	R = 1,910.00'	R = 40.00'	
SE = 0.06	SE = 0.03	SE = NC	
RO = 240'	RO = 40' / 65'	DS = 15 MPH	
DS = 60 MPH	DS = 60 MPH / 40 MPH		



MATCHLINE -L- STA. 192+00 SEE SHEET 17

MATCHLINE -L- STA. 205+00 SEE SHEET 19

NOTES: ALL DRIVES ARE 16' WIDE WITH 10' RADII UNLESS OTHERWISE NOTED.

FOR -L- PROFILE SEE SHT. 29
FOR -DR24- PROFILE SEE SHT. 37
FOR DITCH DETAILS SEE SHT. 2D-1 & 2D-2

RK&K
 P: (919) 978-9560
 8601 Six Forks Road, Forum 1, Suite 700
 Raleigh, North Carolina 27615-3960
 NC License No. F-0112
 Engineers | Construction Managers | Planners | Scientists
 www.rk.com
 Responsive People | Creative Solutions

10/16/2023
 R:\Roadway\Proj\NR5861_Rdy_psh18.dgn
 18/18