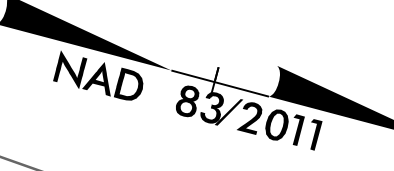


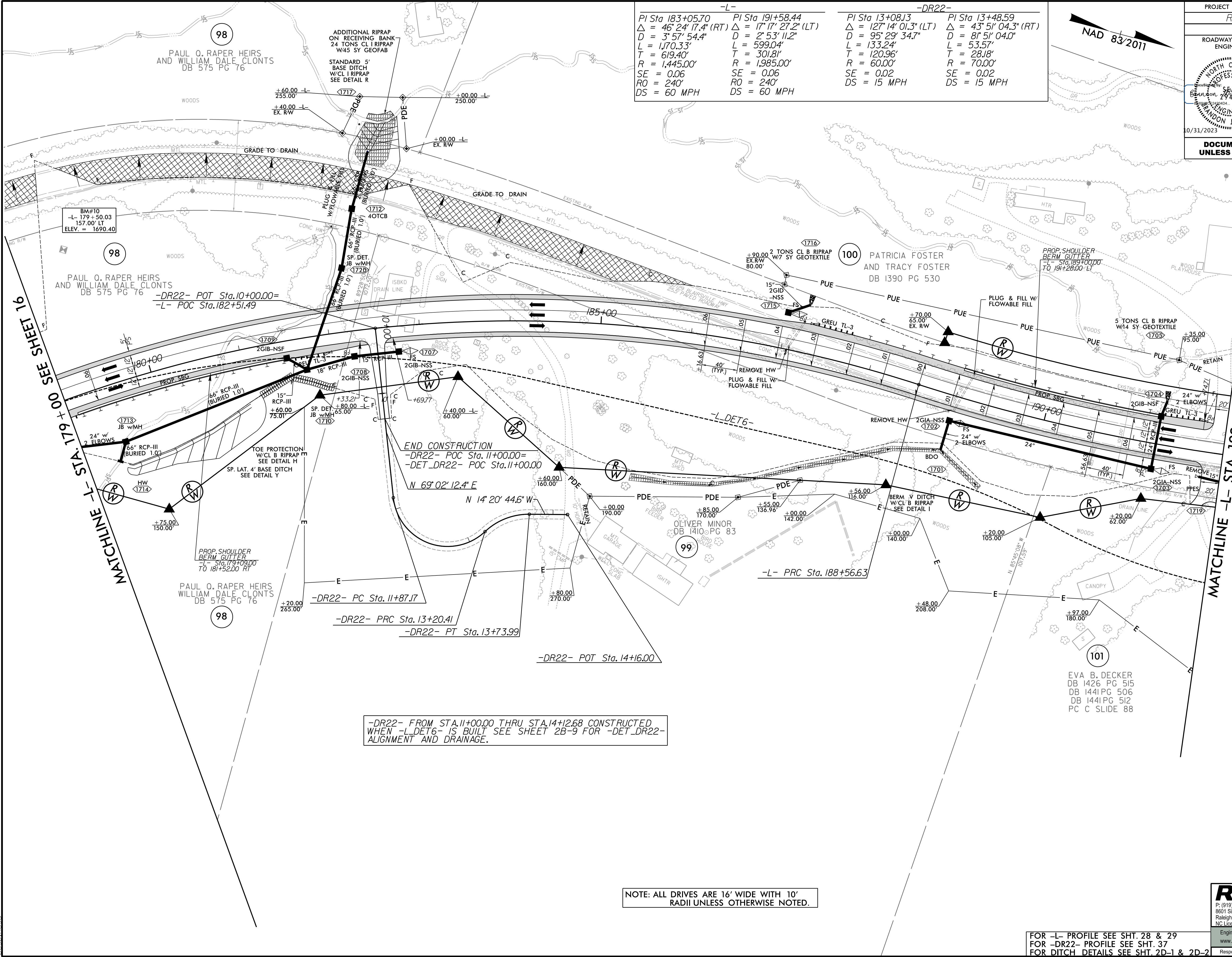
8/17/99

10/6/2023 R:\Roadway\Pro\NR5861_Rdy_psh17.dgn

-L-		-DR22-	
PI Sta 183+05.70	PI Sta 191+58.44	PI Sta 13+08.13	PI Sta 13+48.59
$\Delta = 46' 24" 17.4" (RT)$	$\Delta = 17' 17" 27.2" (LT)$	$\Delta = 127' 14" 01.3" (LT)$	$\Delta = 43' 51" 04.3" (RT)$
$D = 3' 57" 54.4"$	$D = 2' 53" 11.2"$	$D = 95' 29" 34.7"$	$D = 81' 51" 04.0"$
$L = 1,170.33'$	$L = 599.04'$	$L = 133.24'$	$L = 53.57'$
$T = 619.40'$	$T = 301.81'$	$T = 120.96'$	$T = 28.18'$
$R = 1,445.00'$	$R = 1,985.00'$	$R = 60.00'$	$R = 70.00'$
$SE = 0.06$	$SE = 0.06$	$SE = 0.02$	$SE = 0.02$
$RO = 240'$	$RO = 240'$	$DS = 15 MPH$	$DS = 15 MPH$



PROJECT REFERENCE NO. R-5861	SHEET NO. 17
ROADWAY DESIGN ENGINEER	HYDRAULICS ENGINEER
10/31/2023	10/30/2023
DOCUMENT NOT CONSIDERED FINAL UNLESS ALL SIGNATURES COMPLETED	



-DR22- FROM STA. 11+00.00 THRU STA. 14+12.68 CONSTRUCTED WHEN -L-DET6- IS BUILT SEE SHEET 2B-9 FOR -DET_DR22- ALIGNMENT AND DRAINAGE.

NOTE: ALL DRIVES ARE 16' WIDE WITH 10' RADII UNLESS OTHERWISE NOTED.

FOR -L- PROFILE SEE SHT. 28 & 29
FOR -DR22- PROFILE SEE SHT. 37
FOR DITCH DETAILS SEE SHT. 2D-1 & 2D-2

RK&K
 P: (919) 878-9560
 8601 Six Forks Road, Forum 1, Suite 700
 Raleigh, North Carolina 27615-3960
 NC License No. F-0112
 Engineers | Construction Managers | Planners | Scientists
 www.rkk.com
 Responsive People | Creative Solutions