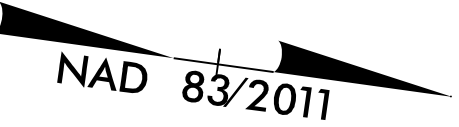
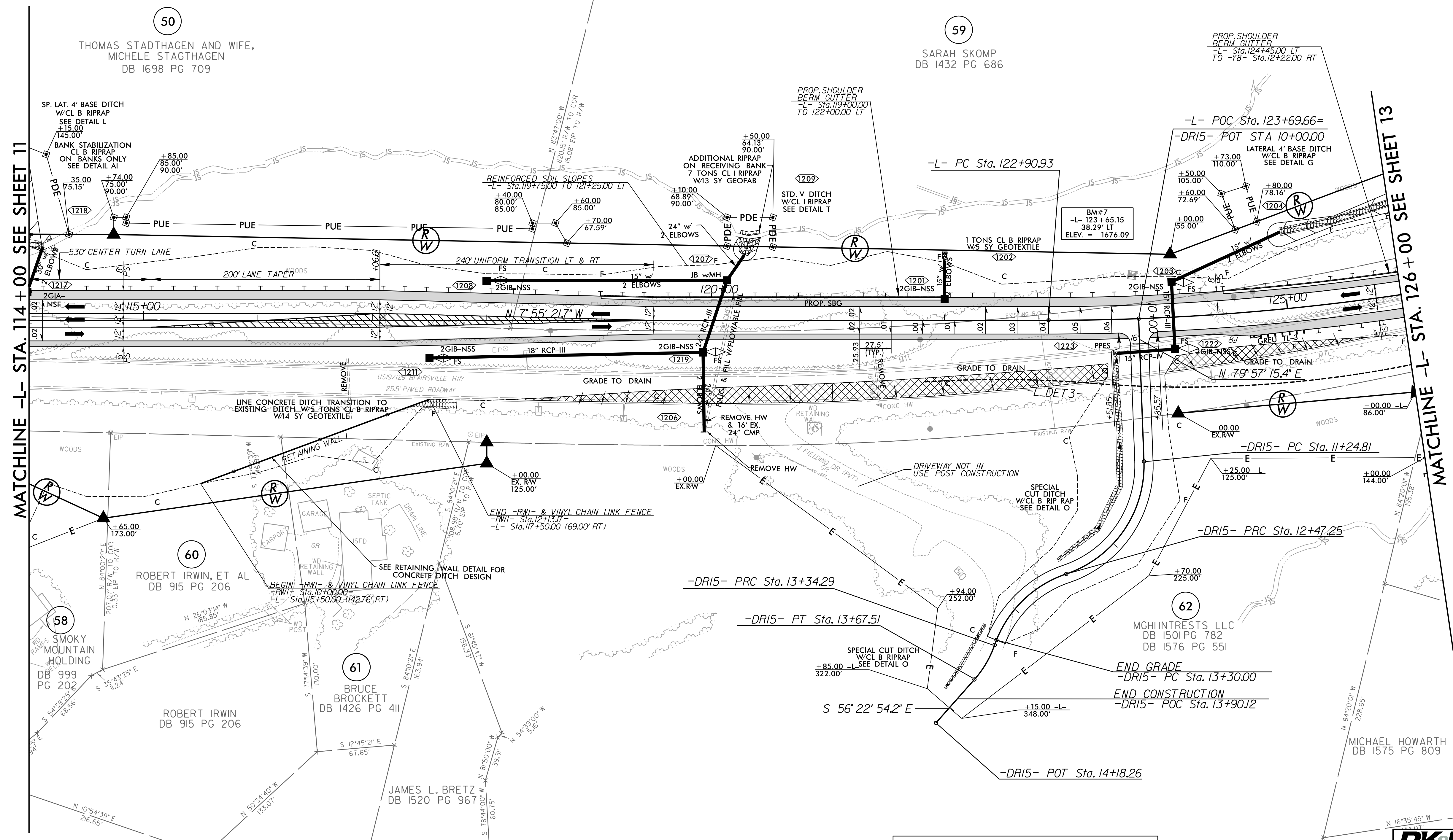


-L-	-DR15-	-DR15-	-DR15-
PI Sta 127+30.02	PI Sta 11+99.43	PI Sta 12+96.26	PI Sta 13+52.13
$\Delta = 23' 20' 58.3" (LT)$	$\Delta = 73' 27' 47.3" (RT)$	$\Delta = 52' 13' 28.3" (LT)$	$\Delta = 22' 25' 31.3" (RT)$
D = 2' 41' 46.6"	D = 60' 00' 00.0"	D = 60' 00' 00.0"	D = 67' 29' 52.7"
L = 865.99'	L = 122.44'	L = 87.04'	L = 33.22'
T = 439.09'	T = 74.62'	T = 49.02'	T = 17.84'
R = 2,125.00'	R = 100.00'	R = 100.00'	R = 90.00'
SE = 0.06	SE = 0.02	SE = 0.02	SE = 0.02
RO = 165'	DS = 15 MPH	DS = 15 MPH	DS = 15 MPH



PROJECT REFERENCE NO. R-5861	SHEET NO. 12
RW SHEET NO.	HYDRAULICS ENGINEER
ROADWAY DESIGN ENGINEER	HYDRAULICS ENGINEER
10/31/2023	10/30/2023
DOCUMENT NOT CONSIDERED FINAL UNLESS ALL SIGNATURES COMPLETED	



NOTES: ALL DRIVES ARE 16' WIDE WITH 10' RADII UNLESS OTHERWISE NOTED.

FOR -L- PROFILE SEE SHTS. 25 & 26  
 FOR -DR15- PROFILE SEE SHT. 36  
 FOR DITCH DETAILS SEE SHT. 2D-1 & 2D-2  
 FOR RETAINING WALL ENVELOPE SEE SHT. W-1 THRU W-3  
 FOR REINFORCED SOIL SLOPE DETAILS SEE SHTS. 2G-1 & 2G-2

RK&K  
 P: (919) 878-3560  
 8601 Six Forks Road, Forum 1 Suite 700  
 Raleigh, North Carolina 27615-3960  
 NC License No. F-0112  
 Engineers | Construction Managers | Planners | Scientists  
 www.rkk.com  
 Responsive People | Creative Solutions