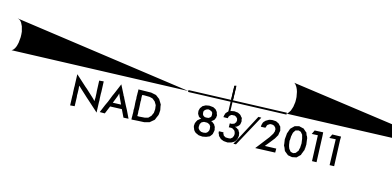


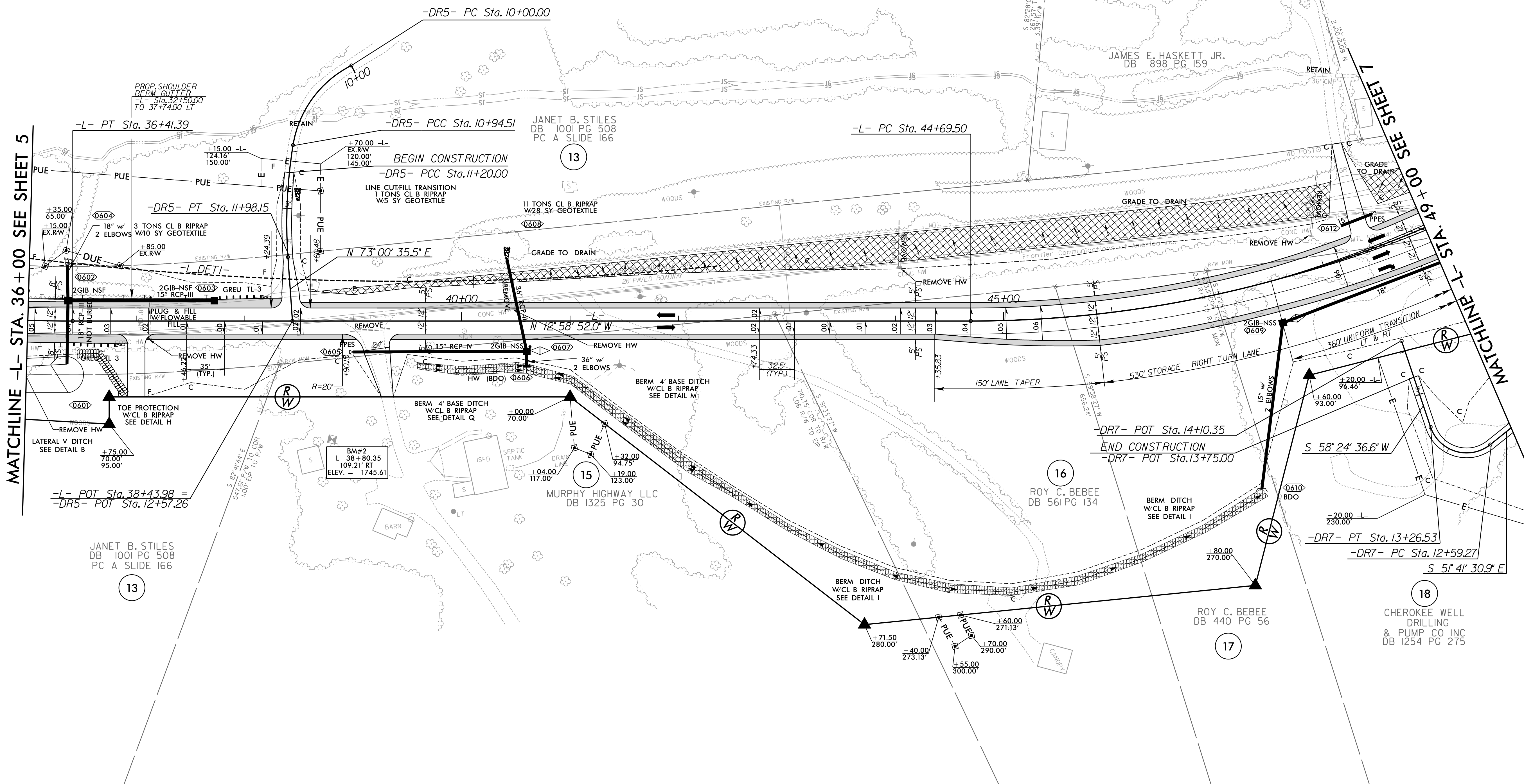
8/17/99

10/6/2023
R:\Roadway\Pro\NF5861_Rdy_psh06.dgn

-L-		-DR5-		-DR7-	
PI Sta 33+81.27	PI Sta 50+66.87	PI Sta 10+51.11	PI Sta 11+46.56	PI Sta 13+09.35	
$\Delta = 19^{\circ} 56' 40.6" (LT)$	$\Delta = 58^{\circ} 48' 26.3" (LT)$	$\Delta = 54^{\circ} 08' 51.5" (LT)$	$\Delta = 13^{\circ} 11' 45.2" (LT)$	$\Delta = 110^{\circ} 06' 07.5" (RT)$	
$D = 3^{\circ} 47' 39.9"$	$D = 5^{\circ} 24' 18.9"$	$D = 57^{\circ} 17' 44.8"$	$D = 12^{\circ} 43' 56.6"$	$D = 163^{\circ} 42' 08.0"$	
$L = 525.63'$	$L = 1,087.96'$	$L = 94.51'$	$L = 103.64'$	$L = 67.26'$	
$T = 265.50'$	$T = 597.37'$	$T = 51.11'$	$T = 52.05'$	$T = 50.08'$	
$R = 1,510.00'$	$R = 1,060.00'$	$R = 100.00'$	$R = 450.00'$	$R = 35.00'$	
$SE = 0.06$	$SE = 0.06$	$SE = 0.02$	$SE = 0.02$	$SE = 0.02$	
$RO = 210'$	$RO = 195'$	$DS = 15 MPH$	$DS = 15 MPH$	$DS = 15 MPH$	



PROJECT REFERENCE NO. R-5861		SHEET NO. 6	
ROADWAY DESIGN ENGINEER		HYDRAULICS ENGINEER	
10/31/2023		10/30/2023	
DOCUMENT NOT CONSIDERED FINAL UNLESS ALL SIGNATURES COMPLETED			



NOTE: ALL DRIVES ARE 16' WIDE WITH 10' RADII UNLESS OTHERWISE NOTED.

FOR -L- PROFILE SEE SHT. 23
 FOR -DR5- PROFILE SEE SHT. 34
 FOR -DR7- PROFILE SEE SHT. 35
 FOR DITCH DETAILS SEE SHT. 2D-1 & 2D-2

RK&K
 P: (919) 978-9560
 8601 Six Forks Road, Forum 1, Suite 700
 Raleigh, North Carolina 27615-3960
 NC License No. F-0112
 Engineers | Construction Managers | Planners | Scientists
 www.rk.com
 Responsive People | Creative Solutions