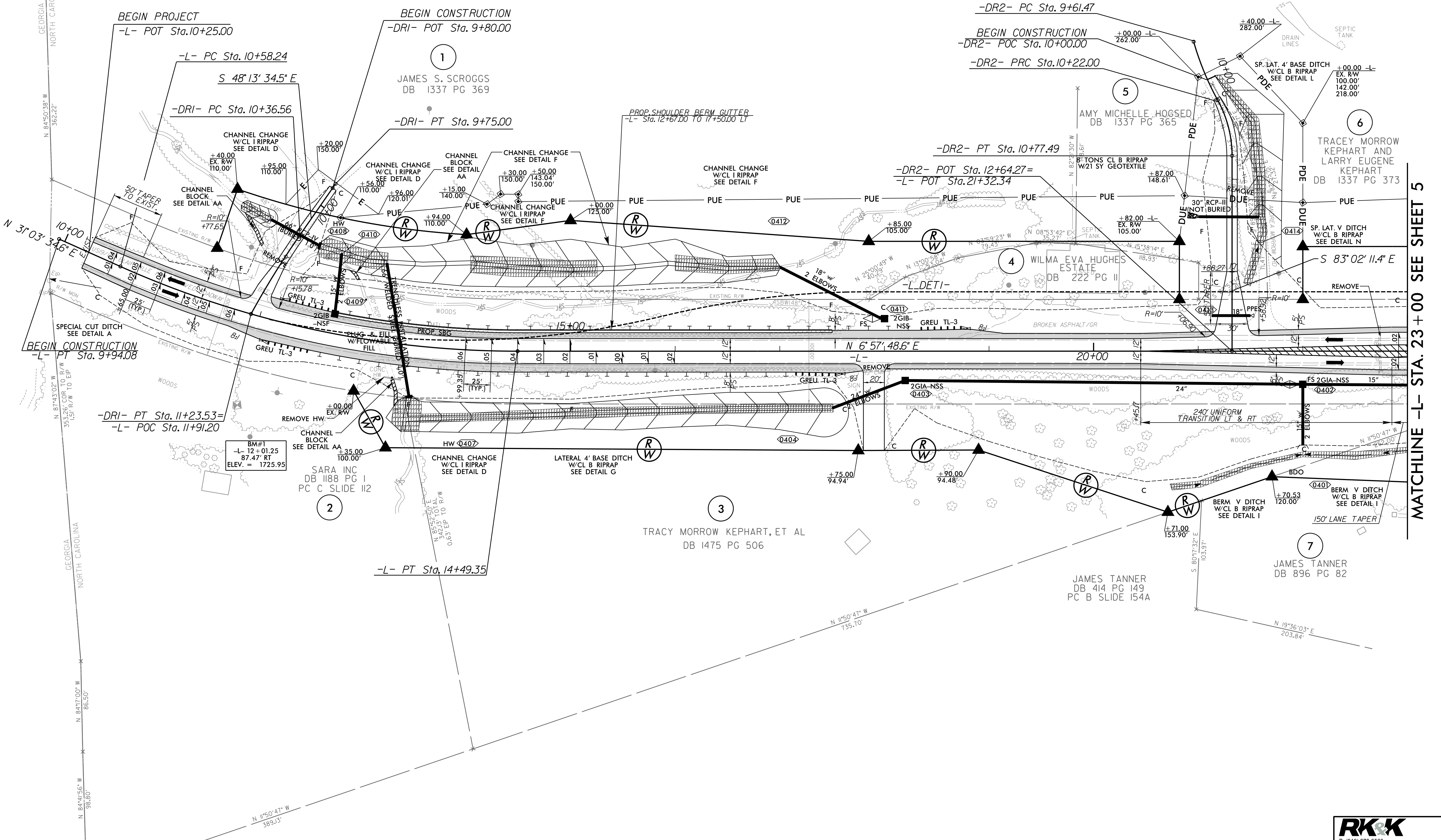


8.17.19  
 10/31/2023  
 R:\Roadway\Proj\N5861.Rdw\psh04.dgn

-L-	-DRI-	-DR2-	
PI Sta 12+56.73	PI Sta 10+80.09	PI Sta 9+91.87	PI Sta 10+50.35
$\Delta = 24^{\circ}05'46.1''$ (LT)	$\Delta = 6^{\circ}06'49.5''$ (LT)	$\Delta = 13^{\circ}05'15.7''$ (LT)	$\Delta = 28^{\circ}53'59.0''$ (RT)
D = 6'09" 39.0"	D = 7'01" 48.6"	D = 21'37" 15.8"	D = 52'05" 13.5"
L = 391.12'	L = 86.96'	L = 60.53'	L = 55.48'
T = 198.49'	T = 43.52'	T = 30.40'	T = 28.35'
R = 930.00'	R = 815.00'	R = 265.00'	R = 110.00'
SE = 0.06	SE = 0.02	SE = 0.02	SE = 0.02
RO = 150'	DS = 15 MPH	DS = 15 MPH	DS = 15 MPH
(MATCH EXIST)			

NAD 83/2011

PROJECT REFERENCE NO. R-5861	SHEET NO. 4
ROADWAY DESIGN ENGINEER	HYDRAULICS ENGINEER
<b>DOCUMENT NOT CONSIDERED FINAL UNLESS ALL SIGNATURES COMPLETED</b>	



MATCHLINE -L- STA. 23+00 SEE SHEET 5

NOTES: ALL DRIVES ARE 16' WIDE WITH 10' RADII UNLESS OTHERWISE NOTED.

FOR DITCH DETAILS SEE SHT. 2D-1 & 2D-2  
 FOR -L- PROFILE SEE SHT. 22  
 FOR -DRI- PROFILE SEE SHT. 34  
 FOR -DR2- PROFILE SEE SHT. 34

**RK&K**  
 P: (919) 878-9560  
 8601 Six Forks Road, Forum 1, Suite 700  
 Raleigh, North Carolina 27615-3960  
 NC License No. F-0112  
 Engineers | Construction Managers | Planners | Scientists  
 www.rkk.com  
 Responsive People | Creative Solutions