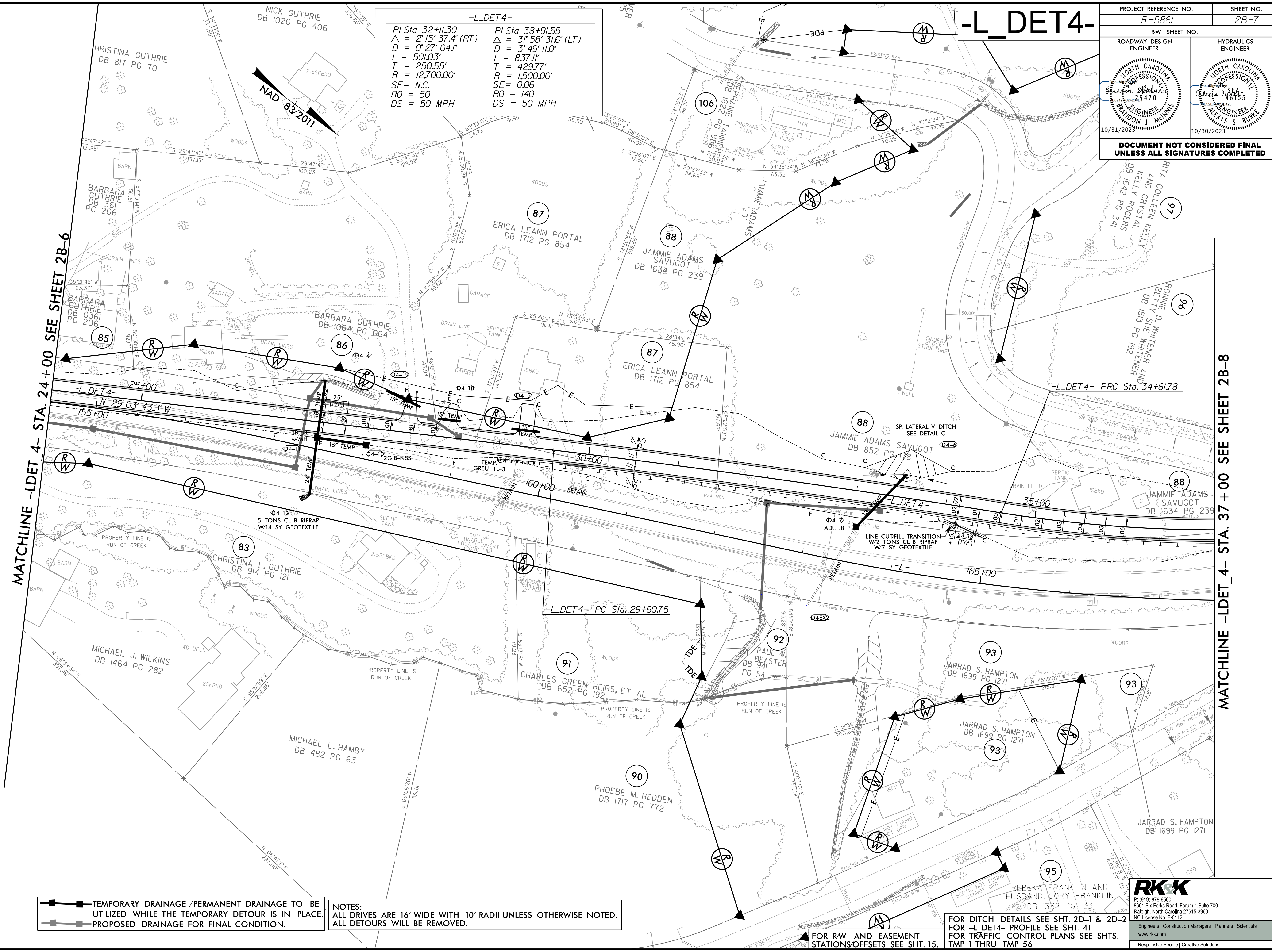


8/17/23
R:\Roadway\Proje\N5861.Rdy_dsn_DET_4_psh2B-7.dgn
10/31/2023



-L_DET4-

PI Sta 32+11.30	PI Sta 38+91.55
$\Delta = 2' 15' 37.4''$ (RT)	$\Delta = 3' 58' 31.6''$ (LT)
D = 0' 27' 04.1"	D = 3' 49' 11.0"
L = 501.03'	L = 837.11'
T = 250.55'	T = 429.77'
R = 12,700.00'	R = 1,500.00'
SE = N.C.	SE = 0.06
RO = 50	RO = 140
DS = 50 MPH	DS = 50 MPH

PROJECT REFERENCE NO. R-5861	SHEET NO. 2B-7
ROADWAY DESIGN ENGINEER	HYDRAULICS ENGINEER
10/31/2023	10/30/2023
DOCUMENT NOT CONSIDERED FINAL UNLESS ALL SIGNATURES COMPLETED	

MATCHLINE -LDET 4- STA. 24+00 SEE SHEET 2B-6

MATCHLINE -LDET 4- STA. 37+00 SEE SHEET 2B-8

- TEMPORARY DRAINAGE /PERMANENT DRAINAGE TO BE UTILIZED WHILE THE TEMPORARY DETOUR IS IN PLACE.
- PROPOSED DRAINAGE FOR FINAL CONDITION.

NOTES:
ALL DRIVES ARE 16' WIDE WITH 10' RADII UNLESS OTHERWISE NOTED.
ALL DETOURS WILL BE REMOVED.

FOR RW AND EASEMENT STATIONS/OFFSETS SEE SHT. 15.

FOR DITCH DETAILS SEE SHT. 2D-1 & 2D-2
FOR -L_DET4- PROFILE SEE SHT. 41
FOR TRAFFIC CONTROL PLANS SEE SHTS. TMP-1 THRU TMP-56

RKK
 (919) 878-9560
 8601 Six Forks Road, Forum 1, Suite 700
 Raleigh, North Carolina 27615-3960
 NC License No. F-0112
 Engineers | Construction Managers | Planners | Scientists
 www.rkk.com
 Responsive People | Creative Solutions