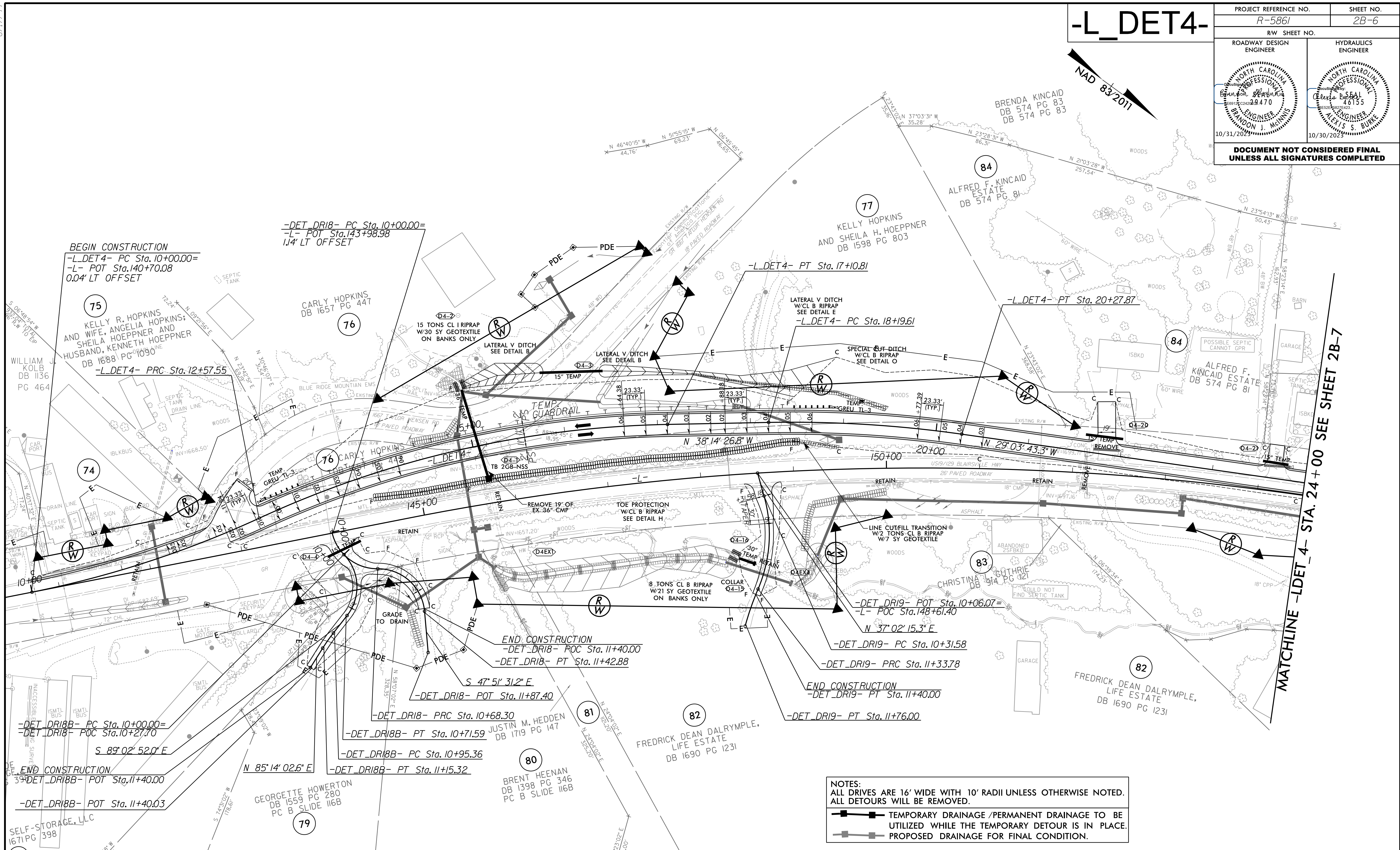
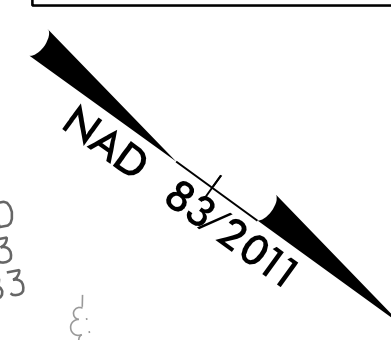


-L_DET4-

PROJECT REFERENCE NO. R-5861	SHEET NO. 2B-6
RW SHEET NO.	
ROADWAY DESIGN ENGINEER	HYDRAULICS ENGINEER
DOCUMENT NOT CONSIDERED FINAL UNLESS ALL SIGNATURES COMPLETED	



BEGIN CONSTRUCTION
-L_DET4- PC Sta. 10+00.00=
-L- POT Sta. 140+70.08
0.04' LT OFFSET

-DET_DR18- PC Sta. 10+00.00=
-L- POT Sta. 143+98.98
1.14' LT OFFSET

-L_DET4- PRC Sta. 12+57.55

-L_DET4- PT Sta. 17+10.81

-L_DET4- PC Sta. 18+19.61

-L_DET4- PT Sta. 20+27.87

-DET_DR19- POT Sta. 10+06.07=
-L- POC Sta. 148+61.40

-DET_DR19- PC Sta. 10+31.58

-DET_DR19- PRC Sta. 11+33.78

-DET_DR19- PT Sta. 11+76.00

END CONSTRUCTION
-DET_DR18- POC Sta. 11+40.00

-DET_DR18- PT Sta. 11+42.88

-DET_DR18- POT Sta. 11+87.40

-DET_DR18- PRC Sta. 10+68.30

-DET_DR18- PT Sta. 10+71.59

-DET_DR18- PC Sta. 10+95.36

-DET_DR18- PT Sta. 11+15.32

-DET_DR18B- PC Sta. 10+00.00=
-DET_DR18B- POC Sta. 10+27.70

-DET_DR18B- POT Sta. 11+40.03

-DET_DR18B- PC Sta. 10+99.36

-DET_DR18B- PT Sta. 11+40.03

-DET_DR18B- PC Sta. 10+00.00=
-DET_DR18B- POC Sta. 10+27.70

-DET_DR18B- POT Sta. 11+40.03

-DET_DR18B- PC Sta. 10+99.36

-DET_DR18B- PT Sta. 11+40.03

NOTES:
ALL DRIVES ARE 16' WIDE WITH 10' RADII UNLESS OTHERWISE NOTED.
ALL DETOURS WILL BE REMOVED.

TEMPORARY DRAINAGE / PERMANENT DRAINAGE TO BE UTILIZED WHILE THE TEMPORARY DETOUR IS IN PLACE.

 PROPOSED DRAINAGE FOR FINAL CONDITION.

-L_DET4-		-DET_DR18-		-DET_DR18B-		-DET_DR19-	
PI Sta 11+29.41	PI Sta 14+87.52	PI Sta 19+23.97	PI Sta 10+40.68	PI Sta 11+4.49	PI Sta 10+43.49	PI Sta 11+05.35	PI Sta 10+84.76
Δ = 13° 25' 10.6" (LT)	Δ = 23° 37' 01.0" (RT)	Δ = 9° 10' 43.4" (RT)	Δ = 78° 15' 52.3" (LT)	Δ = 85° 28' 02.8" (RT)	Δ = 82° 02' 03.8" (RT)	Δ = 5° 43' 05.5" (LT)	Δ = 39° 02' 18.7" (RT)
D = 5' 12' 37.8"	D = 5' 12' 37.8"	D = 4' 24' 26.5"	D = 114' 35' 29.6"	D = 114' 35' 29.6"	D = 114' 35' 29.6"	D = 28' 38' 52.4"	D = 38' 11' 49.9"
L = 257.55'	L = 453.26'	L = 208.26'	L = 68.30'	L = 74.58'	L = 71.59'	L = 19.96'	L = 102.20'
T = 129.41'	T = 229.97'	T = 104.35'	T = 40.68'	T = 46.19'	T = 43.49'	T = 9.99'	T = 53.17'
R = 1,100.00'	R = 1,100.00'	R = 1,300.00'	R = 50.00'	R = 50.00'	R = 50.00'	R = 200.00'	R = 150.00'
SE = 0.06	SE = 0.06	SE = 0.06	RO = 140	RO = 140	RO = 140	RO = 140	RO = 140
DS = 50 MPH	DS = 50 MPH	DS = 50 MPH					

FOR R/W AND EASEMENT STATIONS/OFFSETS SEE SHTS. 14 AND 15.

FOR DITCH DETAILS SEE SHT. 2D-1 & 2D-2 FOR -L_DET4- PROFILE SEE SHT. 40 FOR -DET_DR18- PROFILE SEE SHT. 43 FOR -DET_DR18B- PROFILE SEE SHT. 43 FOR -DET_DR19- PROFILE SEE SHT. 43 FOR TRAFFIC CONTROL PLANS SEE SHTS. TMP-1 THRU TMP-56

MATCHLINE -LDET_4- STA. 24+00 SEE SHEET 2B-7

8.17/2023 R:\Projects\2023\Projects\5861\Proj\5861_Rdwy_dsn_DET_4_psh2B-6.dgn