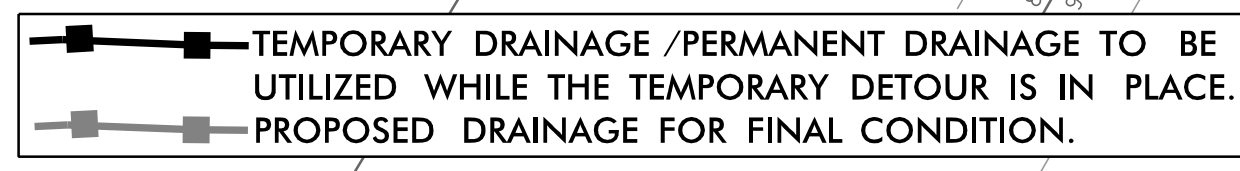
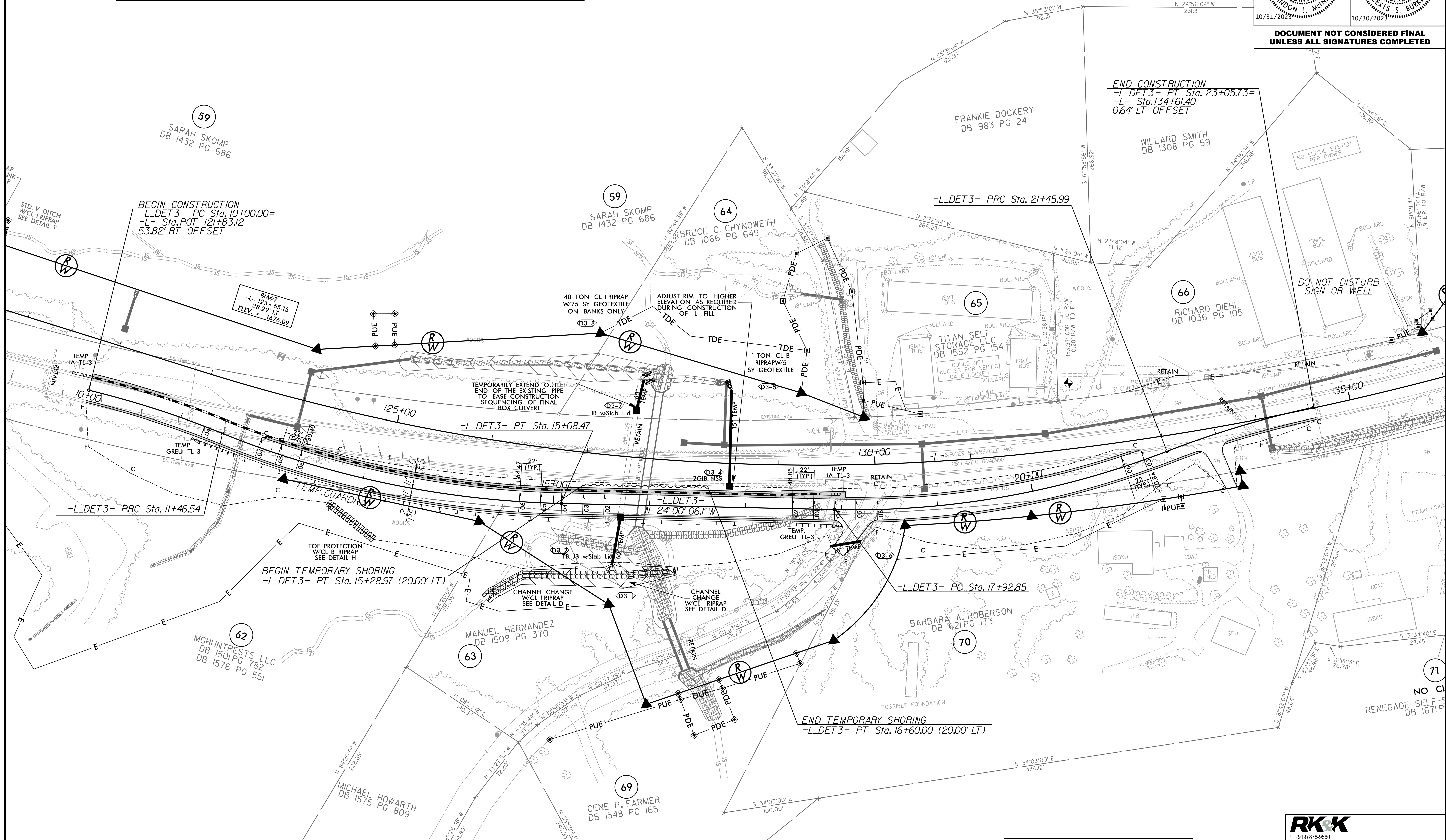
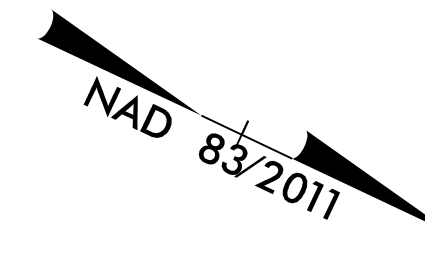


# -L\_DET3-

PROJECT REFERENCE NO. R-5861		SHEET NO. 2B-5	
RW SHEET NO.		HYDRAULICS ENGINEER	
ROADWAY DESIGN ENGINEER		HYDRAULICS ENGINEER	
DOCUMENT NOT CONSIDERED FINAL UNLESS ALL SIGNATURES COMPLETED			

-L_DET3-			
PI Sta 10+73.43 Δ = 8° 23' 59.2" (RT) D = 5' 43' 55.1" L = 146.54' T = 73.43' R = 1,000.00' SE = 0.06 RO = 44 DS = 50 MPH	PI Sta 13+29.59 Δ = 20° 44' 44.1" (LT) D = 5' 43' 55.1" L = 361.93' T = 183.04' R = 1,000.00' SE = 0.06 RO = 132 DS = 50 MPH	PI Sta 19+71.81 Δ = 22° 29' 34.2" (LT) D = 6' 22' 10.1" L = 353.13' T = 178.96' R = 900.00' SE = 0.06 RO = 132 DS = 50 MPH	PI Sta 22+26.06 Δ = 9° 09' 23.9" (RT) D = 5' 43' 55.1" L = 159.75' T = 80.08' R = 1,000.00' SE = 0.06 RO = 44 DS = 50 MPH



NOTES:  
ALL DRIVES ARE 16' WIDE WITH 10' RADII UNLESS OTHERWISE NOTED.  
ALL DETOURS WILL BE REMOVED.

FOR RW AND EASEMENTS STATIONS/OFFSETS SEE SHTS. 12 AND 13.  
FOR DITCH DETAILS SEE SHT. 2D-1 & 2D-2  
FOR -L- DET3- PROFILE SEE SHT. 40  
FOR TRAFFIC CONTROL PLANS SEE SHTS. TMP-1 THRU TMP-56

**RKK**  
P: (919) 878-9560  
8601 Six Forks Road, Forum 1, Suite 700  
Raleigh, North Carolina 27615-3960  
NC License No. F-0112  
Engineers | Construction Managers | Planners | Scientists  
www.rkk.com  
Responsive People | Creative Solutions

8.17.19  
R:\Projects\2023\Projects\Proje\N5861.Rdy.dsn\_DET\_3\_psh2B-5.dgn  
10/25/2023