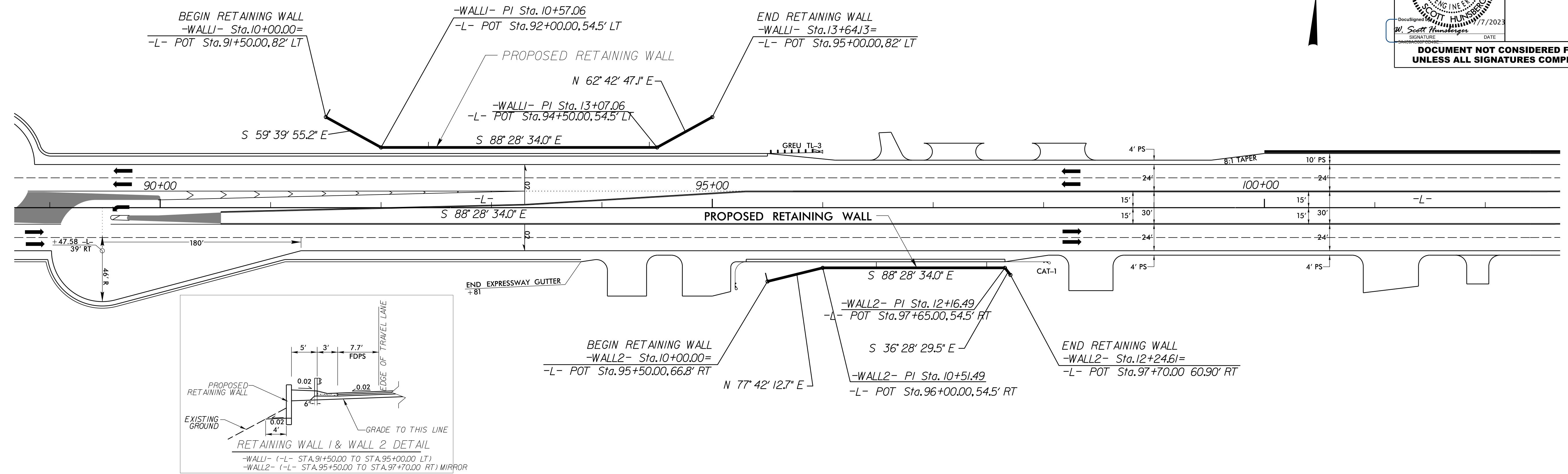
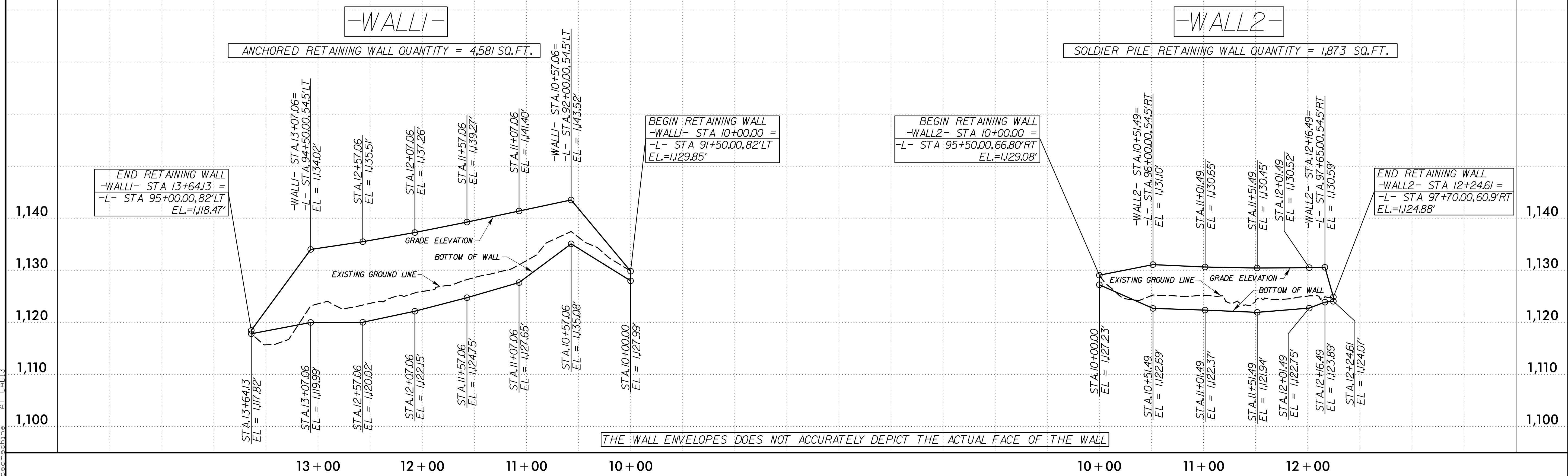


PROJECT REFERENCE NO. U-5312	SHEET NO. W-1
RW SHEET NO.	
GEOTECHNICAL ENGINEER	HYDRAULICS ENGINEER
DOCUMENT NOT CONSIDERED FINAL UNLESS ALL SIGNATURES COMPLETED	



RETAINING WALL ENVELOPES



7-JUL-2023 08:55
 T:\Projects\2023\172038.00_VHB_U-5312 (US-421) Superstreet in Wilkes County\U5312.GEO_ROWY\CADD.GEOTECH\Sheet&Sub\U5312.GEO_RetainingWall.dgn
 8/17/23