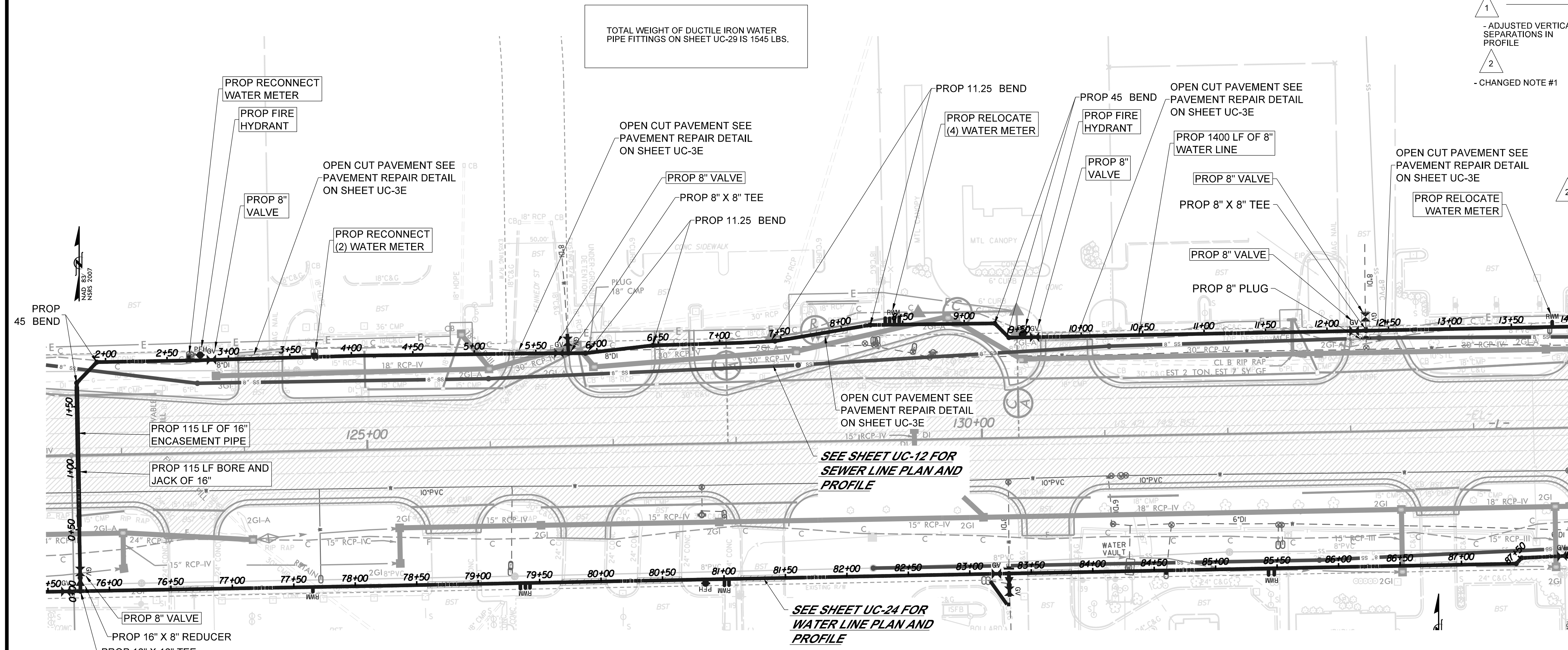


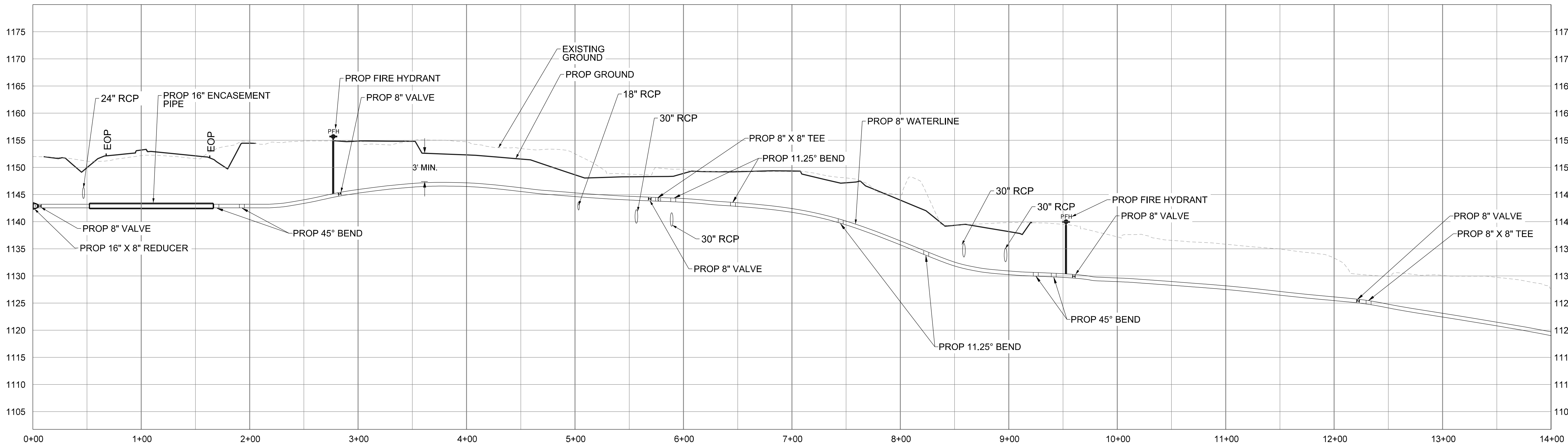
PROJECT REFERENCE NO.	U-5312	SHEET NO.	UC-29
DESIGNED BY:	B. CLAWSON		
DRAWN BY:	R. MOSS		
CHECKED BY:	B. CLAWSON		
APPROVED BY:			
REVISED:	5/9/23 11/2/23		
MUNICIPAL ENGINEERING SERVICES COMPANY, P.A.	P.O. BOX 97 GARNER, NC 27529 (919) 772-5393		
		UTILITY CONSTRUCTION PLANS ONLY	



TOTAL WEIGHT OF DUCTILE IRON WATER PIPE FITTINGS ON SHEET UC-29 IS 1545 LBS.

- 1 - ADJUSTED VERTICAL SEPARATIONS IN PROFILE
- 2 - CHANGED NOTE #1

- NOTES:
1. WATERLINE MATERIAL SHALL BE: DIP-CLASS 350 (ALL OPEN TRENCH INSTALLATIONS), HDPE-DR7 (DIRECTIONAL BORE INSTALLATIONS), COPPER (SERVICE INSTALLATIONS)
  2. THE CONTRACTOR SHALL VERIFY EXISTING PIPE SIZE AND MATERIAL, AND PROVIDE APPROPRIATE SIZED SLEEVE TO MAKE PROPER CONNECTIONS TO EXISTING PIPE LINES.
  3. WHEN CROSSING PIPE LINES UNDER PROPOSED AND/OR EXISTING DITCHES INSURE THAT PIPE LINE WILL HAVE A MINIMUM OF 4' COVER FROM FINISHED GRADE.
  4. USE RESTRAINED JOINTS AT FIRST TWO JOINTS BEYOND EACH SIDE OF FITTING IN ADDITION TO THRUST BLOCKING AT FITTING.
  5. IF AN ITEM IS NOT CALLED OUT IN A BOX, IT IS INCIDENTAL TO AND INCLUDED IN THE UNIT COST OF THE PIPE LINE.
  6. TWO OR MORE ADJACENT METERS SHALL BE INSTALLED IN ACCORDANCE WITH THE STANDARD DETAIL. ALL GANG METER INSTALLATIONS ON THIS PROJECT SHALL HAVE 1-INCH SERVICE TAP & SUPPLY LINE FROM MAIN LINE UNLESS DIRECTED OTHERWISE BY THE ENGINEER.
  7. PIPE LINE ABANDONMENT SHALL BE AFTER NEW PIPE LINE HAS BEEN TESTED AND ACCEPTED. PIPE LINE ABANDONMENT SHALL BE IN ACCORDANCE WITH SECTION 1530 OF THE NCDOT STANDARD SPECIFICATIONS FOR ROADS AND STRUCTURES.



SEE SHEET UC-12 FOR SEWER LINE PLAN AND PROFILE

SEE SHEET UC-24 FOR WATER LINE PLAN AND PROFILE

MATCH LINE SEE SHEET UC-30