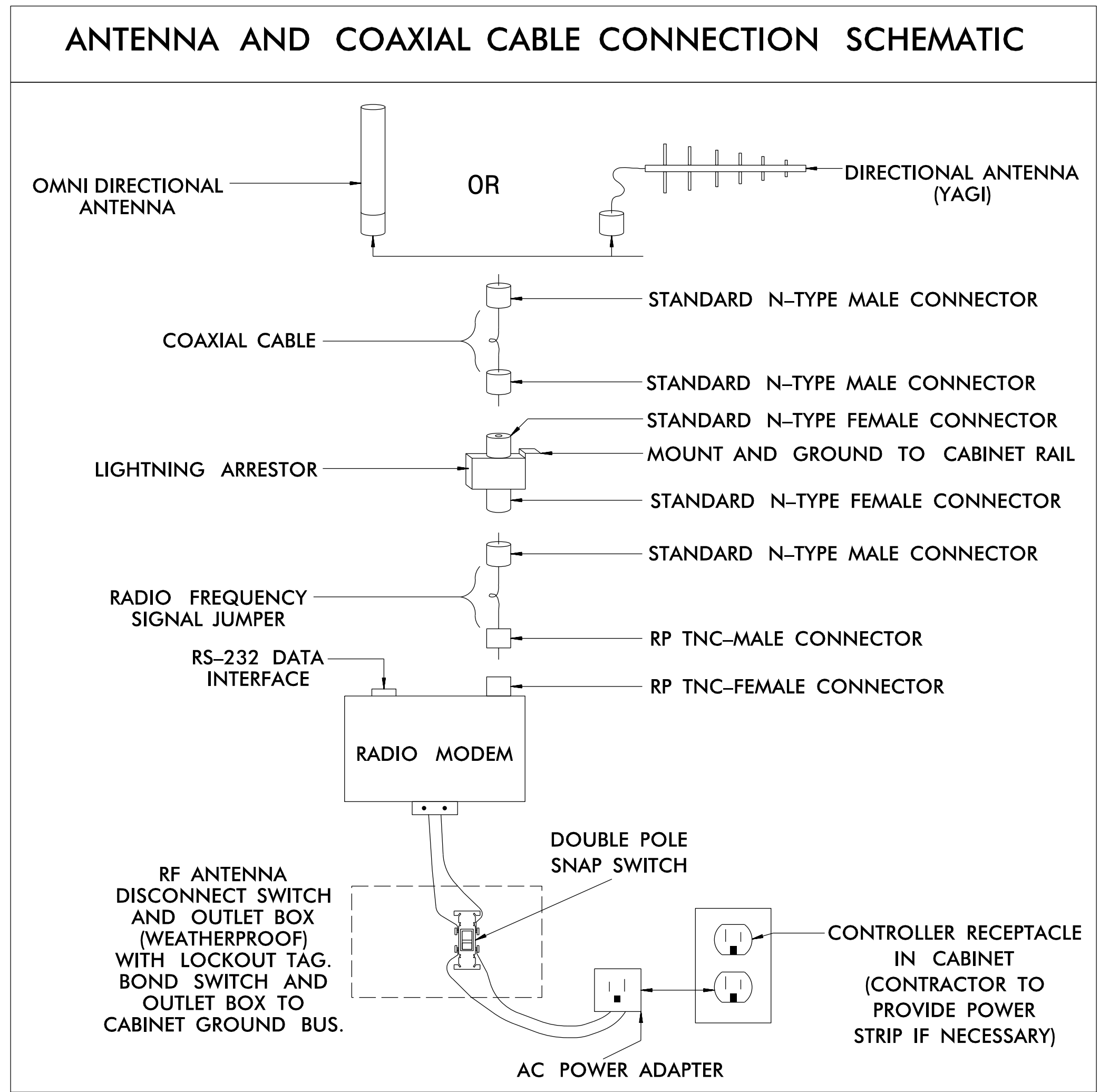
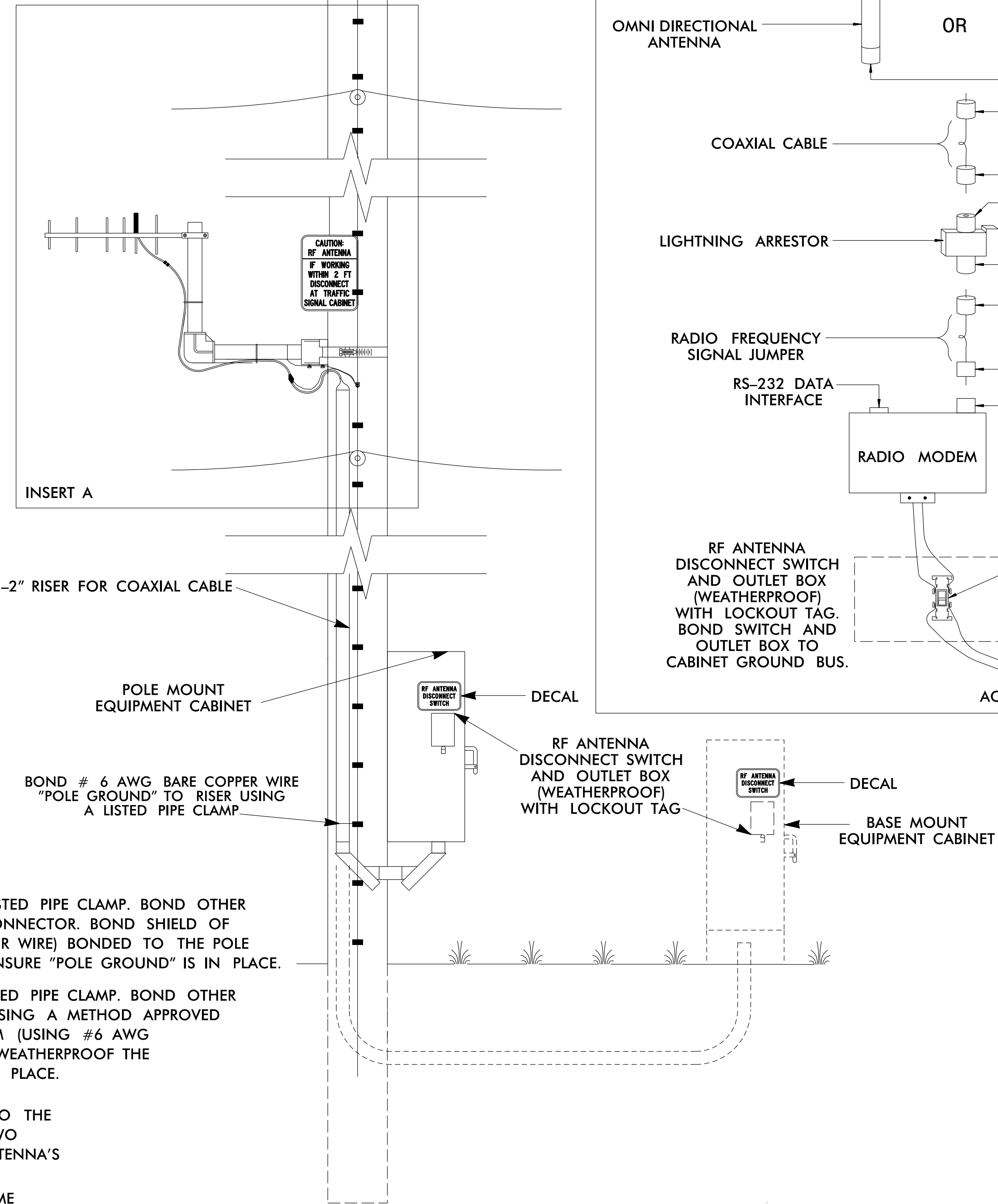


NOTES

- WOOD POLE — BOND # 6 AWG SOLID BARE COPPER WIRE TO ANTENNA SUPPORT USING LISTED PIPE CLAMP. BOND OTHER END OF # 6 AWG SOLID BARE COPPER WIRE TO THE POLE OR EXISTING SYSTEM GROUND USING A METHOD APPROVED BY THE ENGINEER. WEATHERPROOF THE CONNECTION ONCE THE GROUNDING SYSTEM IS INSTALLED. ENSURE "POLE GROUND" IS IN PLACE.
METAL POLE — BOND # 6 AWG SOLID BARE COPPER WIRE TO ANTENNA SUPPORT USING LISTED PIPE CLAMP. BOND OTHER END OF # 6 AWG SOLID BARE COPPER WIRE TO THE POLE OR EXISTING SYSTEM GROUND USING A METHOD APPROVED BY THE ENGINEER. BOND SHIELD OF COAXIAL CABLE WITH AN APPROVED GROUNDING SYSTEM (USING #6 AWG STRANDED COPPER WIRE) BONDED TO THE POLE BY A METHOD APPROVED BY THE ENGINEER. WEATHERPROOF THE CONNECTION ONCE THE GROUNDING SYSTEM IS INSTALLED. ENSURE "SYSTEM GROUND" IS IN PLACE.
- TO CONSERVE VERTICAL SPACING ON THE POLE (JOINT-USE OR SIGNAL POLE) WITH REGARDS TO THE SURROUNDING UTILITIES, INSTALL THE ANTENNA MOUNTING HARDWARE USING ONE OF THE TWO METHODS LISTED BELOW: (ENSURE THAT THE MOUNTING METHOD DOES NOT DEGRADE THE ANTENNA'S SIGNAL INTEGRITY)
 - ROTATE THE VERTICAL SUPPORT ARM 90 DEGREES SUCH THAT THE ANTENNA IS AT THE SAME HEIGHT AS THE HORIZONTAL SUPPORT ARM.
 - ELIMINATE THE VERTICAL SUPPORT ARM AND MOUNT THE ANTENNA TO THE HORIZONTAL SUPPORT ARM.
 - ANTENNA, ANTENNA SUPPORT ARM, AND SIGN TO MAINTAIN A 40" SEPARATION FROM NEUTRAL /POWER AND 12" FROM OTHER UTILITIES.
- INSTALL AN END CAP TO SEAL THE EXPOSED END OF THE MOUNTING PIPE.



6/18/2019 4:18:28 PM \\v\b\gbi\proj\Raleigh\38621.03 NCDOT\Traffic\Signals\Design\U5312_SCP.dgn schiluka



DOCUMENT NOT CONSIDERED FINAL UNLESS ALL SIGNATURES COMPLETED

	Wireless Radio Antenna Typical Details	
	Division 11 Wilkes County Wilkesboro PLAN DATE: May 2023 REVIEWED BY: J. Ma PREPARED BY: S.R. Chiluka REVIEWED BY: M. Stygles	5/24/2023 DATE
REVISIONS _____ _____ _____	INIT. _____ _____ _____	DATE _____ _____ _____

SIG. INVENTORY NO. II-XXXX