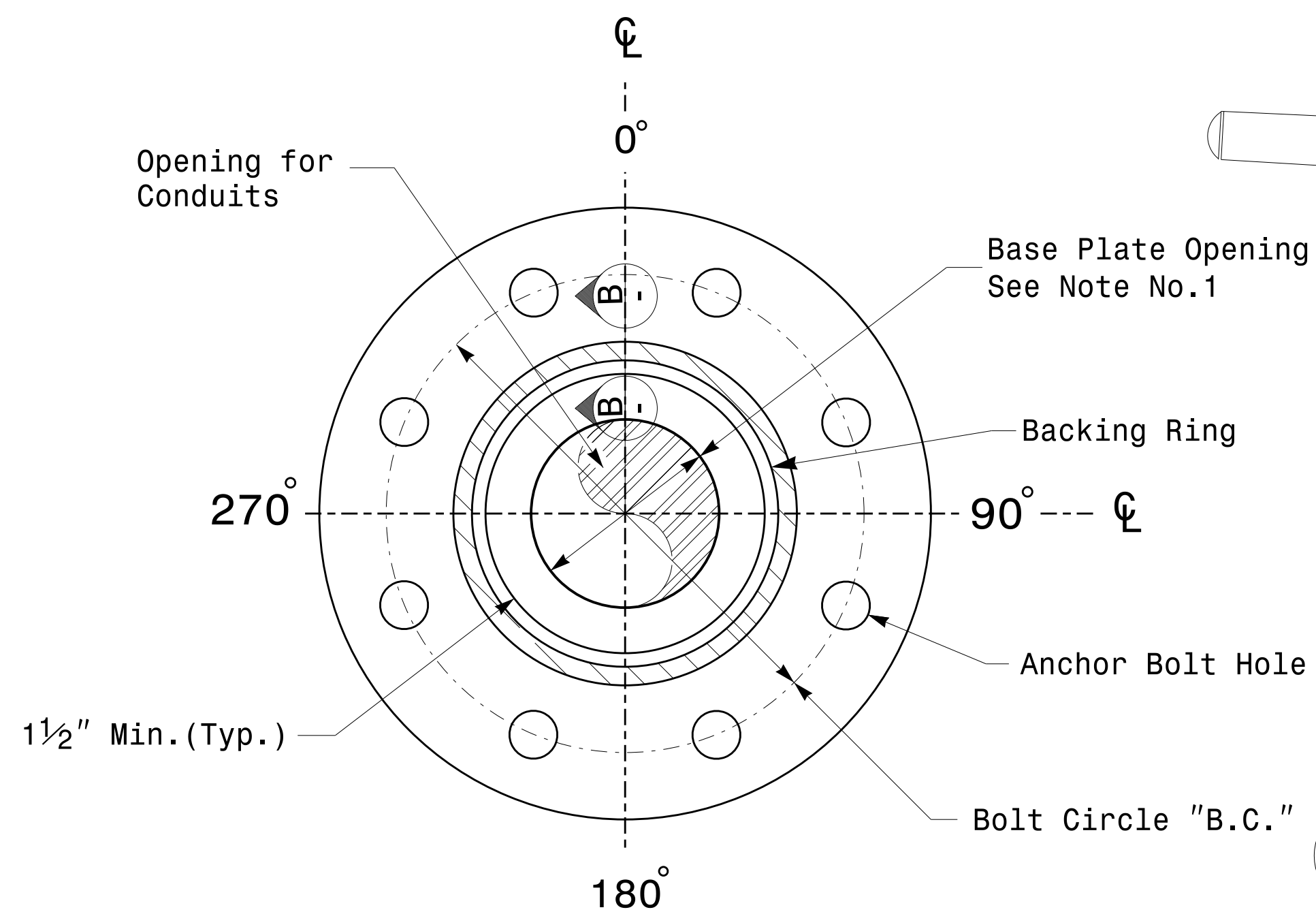
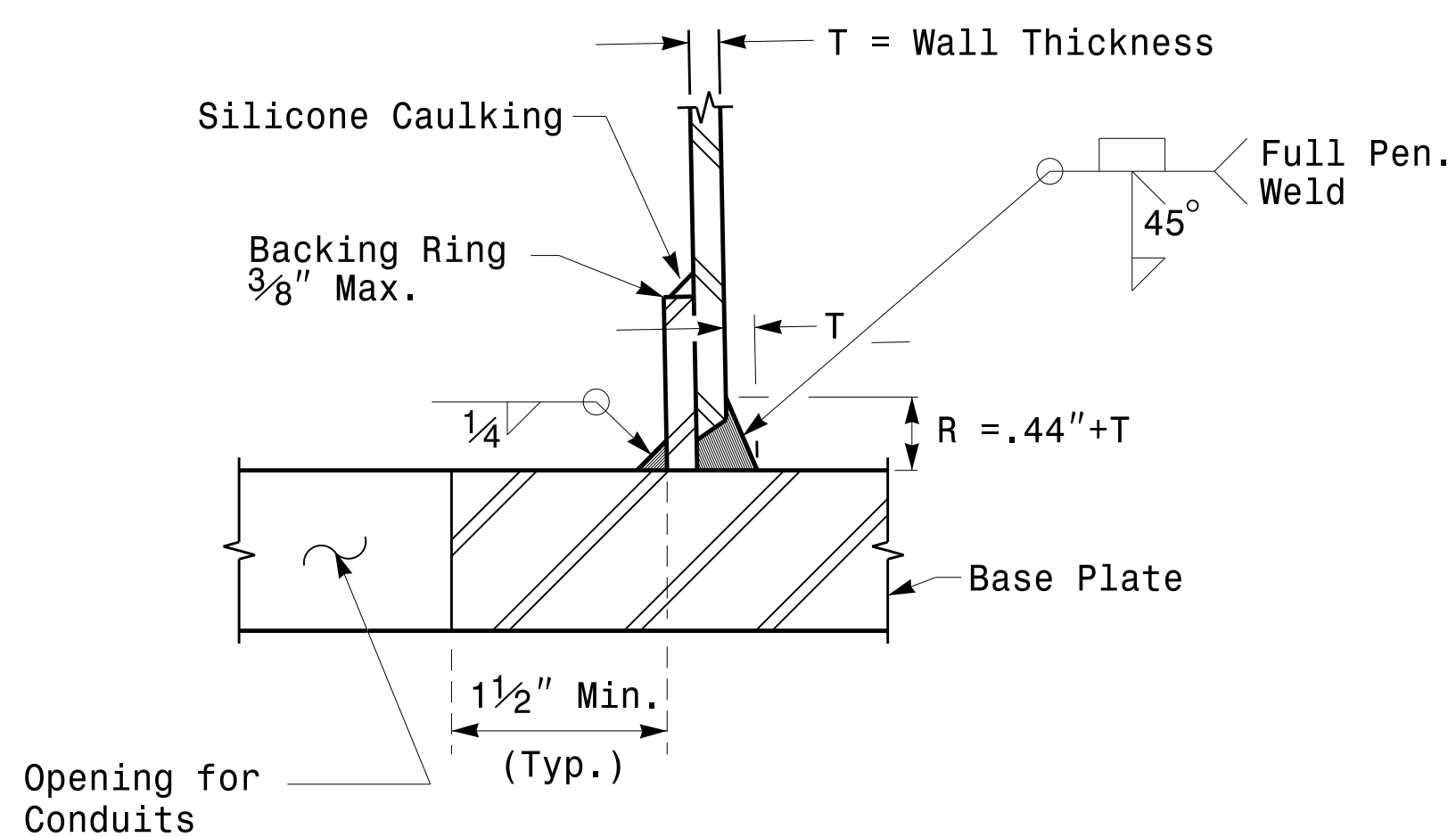


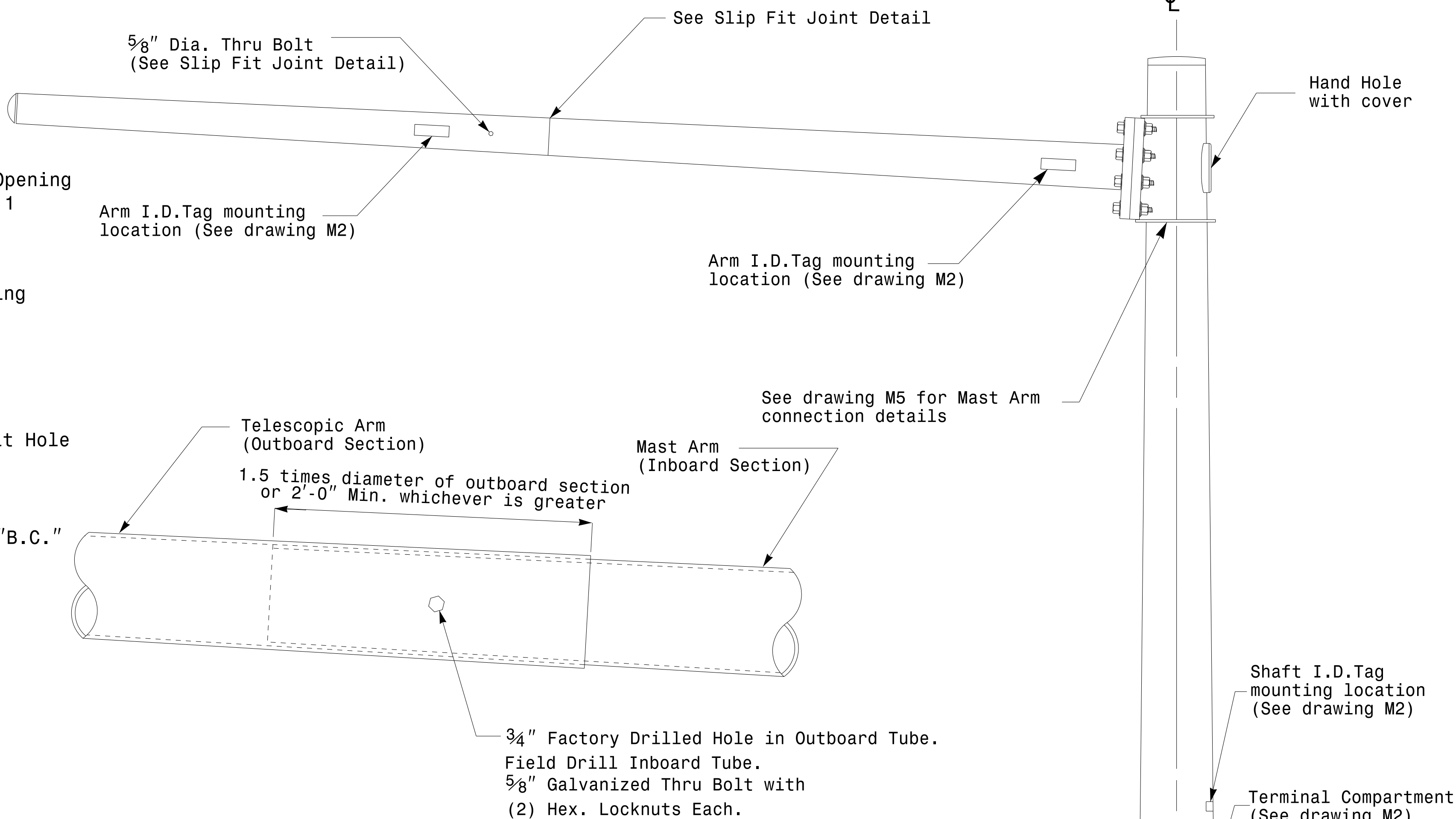
Note:
 1. Opening in pole base plate shall be equal to pole base inside diameter minus 3 1/2" but shall not be less than 8 1/2".



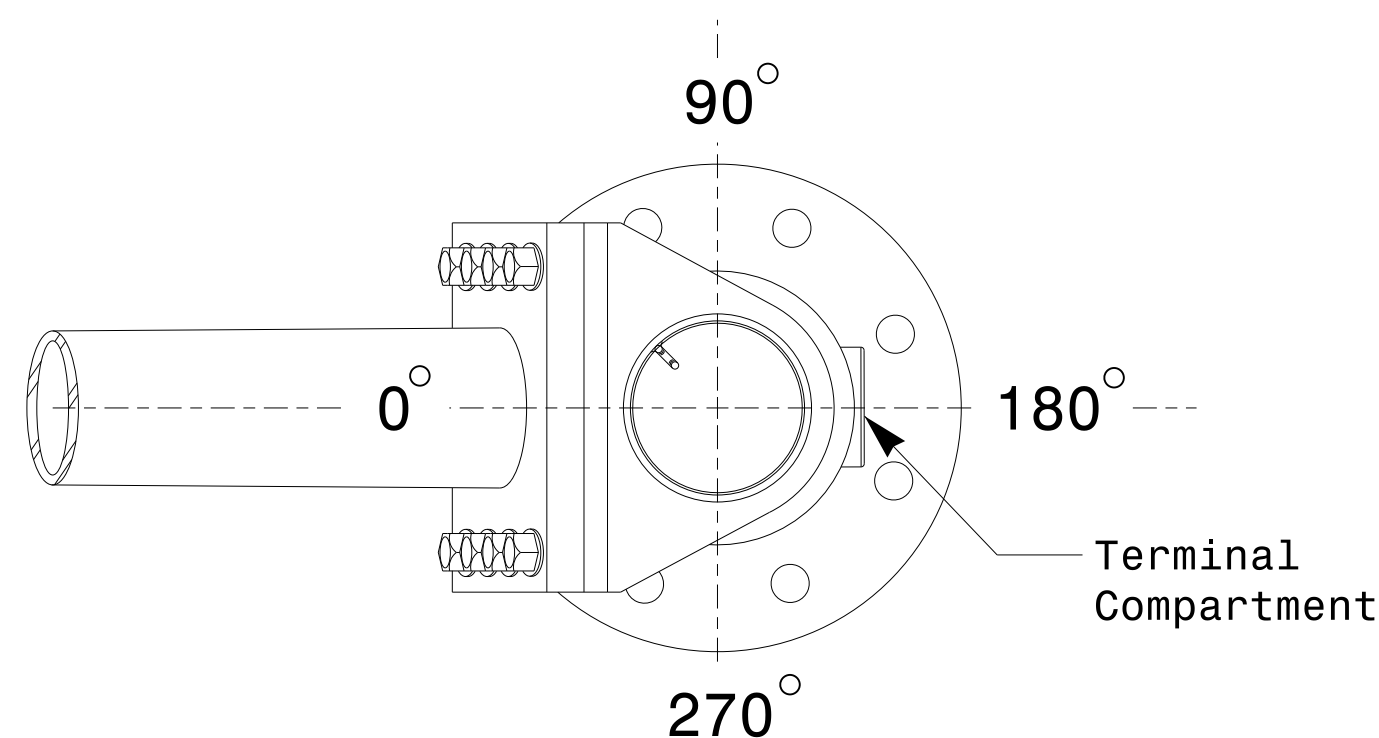
Section A-A
 Pole Base Plate Details



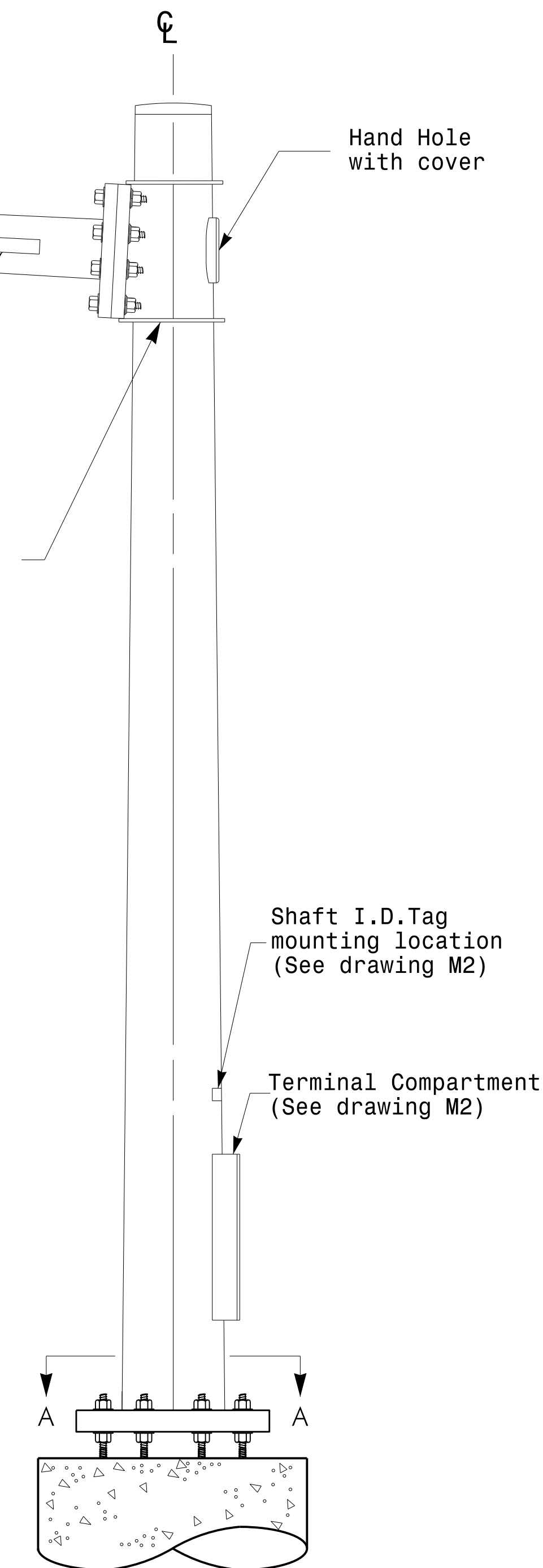
Section B-B
 (Pole Attachment to Base Plate)
 Full-Penetration Groove Weld Detail



Slip Fit Joint Detail for Mast Arm



Mast Arm Radial Orientation



Mast Arm Pole

	Typical Fabrication Details For Mast Arm Poles		SEAL 	
	PLAN DATE: OCTOBER 2017	DESIGNED BY: K.C. DURIGON		DocuSigned by: DATE
	PREPARED BY: N. BITTING	REVIEWED BY: D.C. SARKAR		
SCALE 0 NA NONE	REVISIONS _____ _____ _____	INIT. DATE _____ _____ _____ _____ _____ _____	10/11/2017 DATE	

Fabrication Details – Mast Arm Poles

11-OCT-2017 08:33 136504115 SignalDesign Section Design Section Eastern RegionM4 Sheets20162014 Sig.M4 Std. Fabrication Detail - Mast Arm Poles.dgn