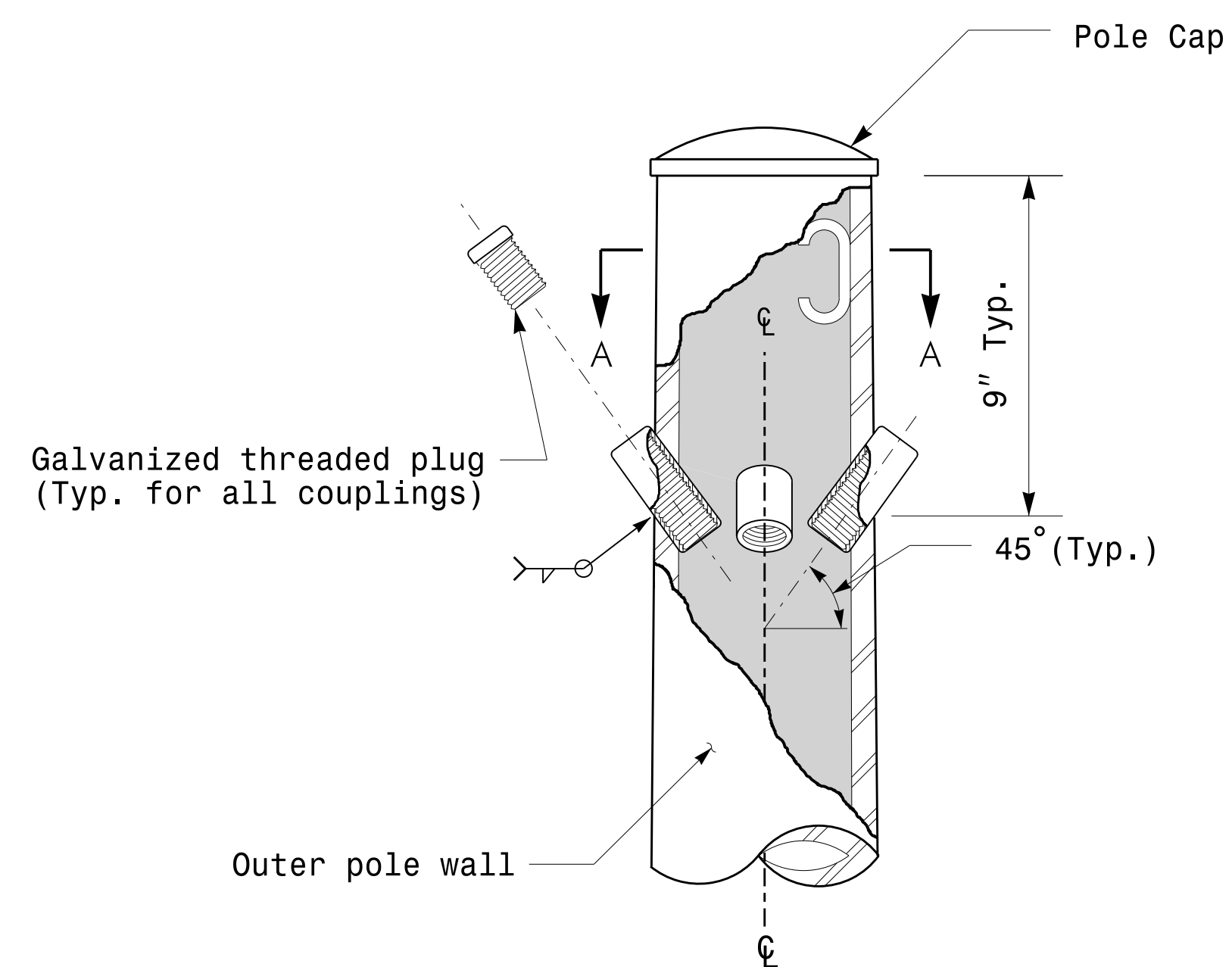
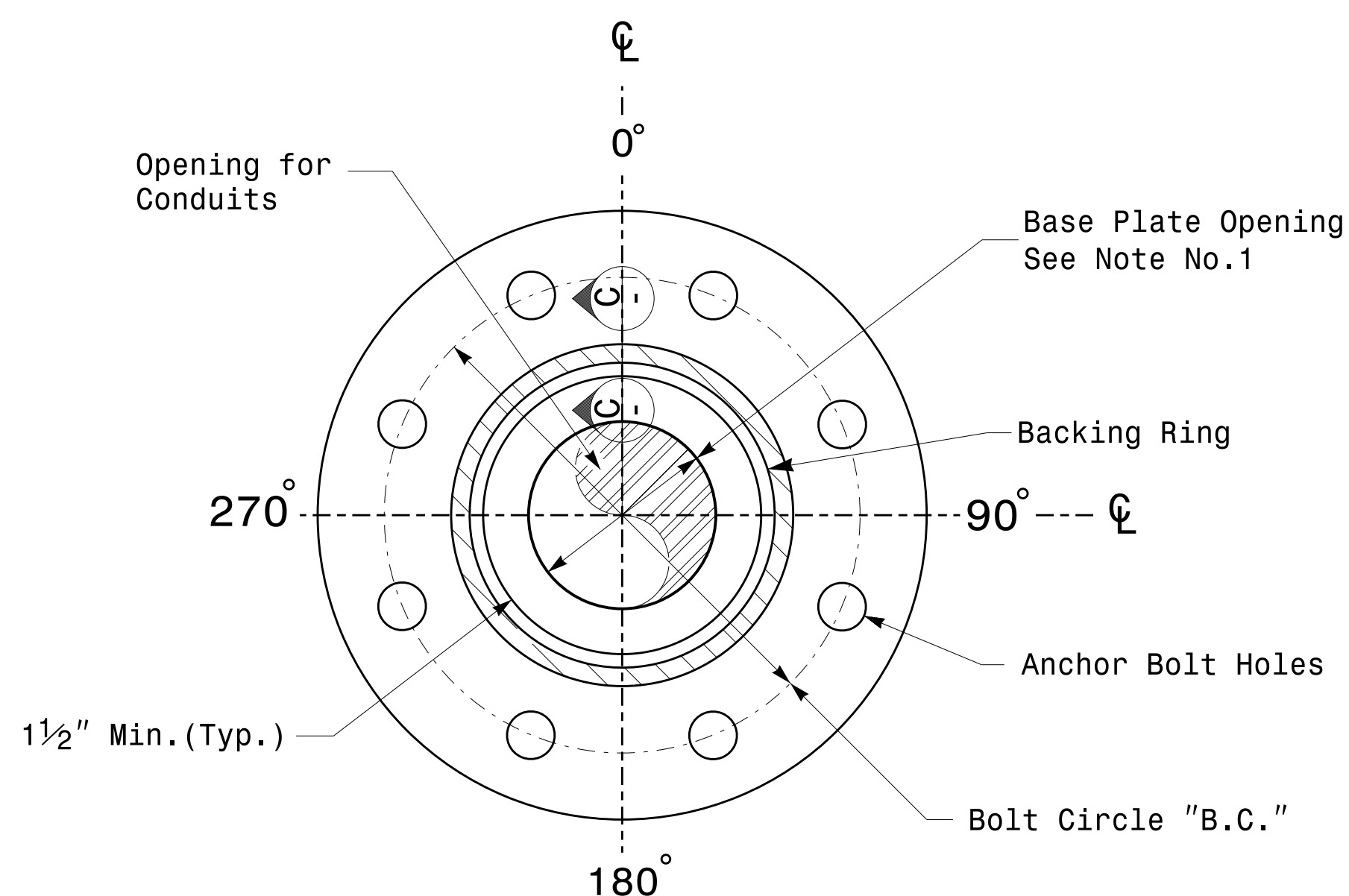


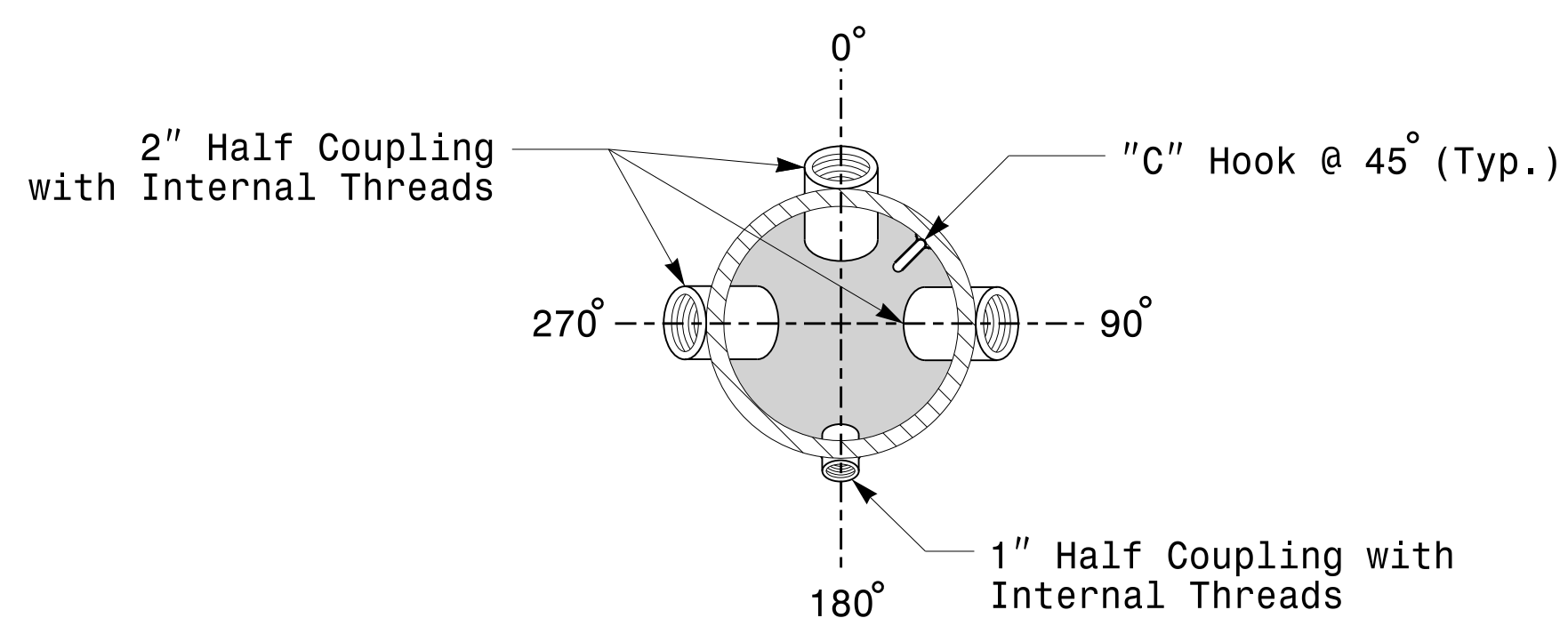
Note:
 1. Opening in pole base plate shall be equal to pole base inside diameter minus 3 1/2" but shall not be less than 8 1/2".



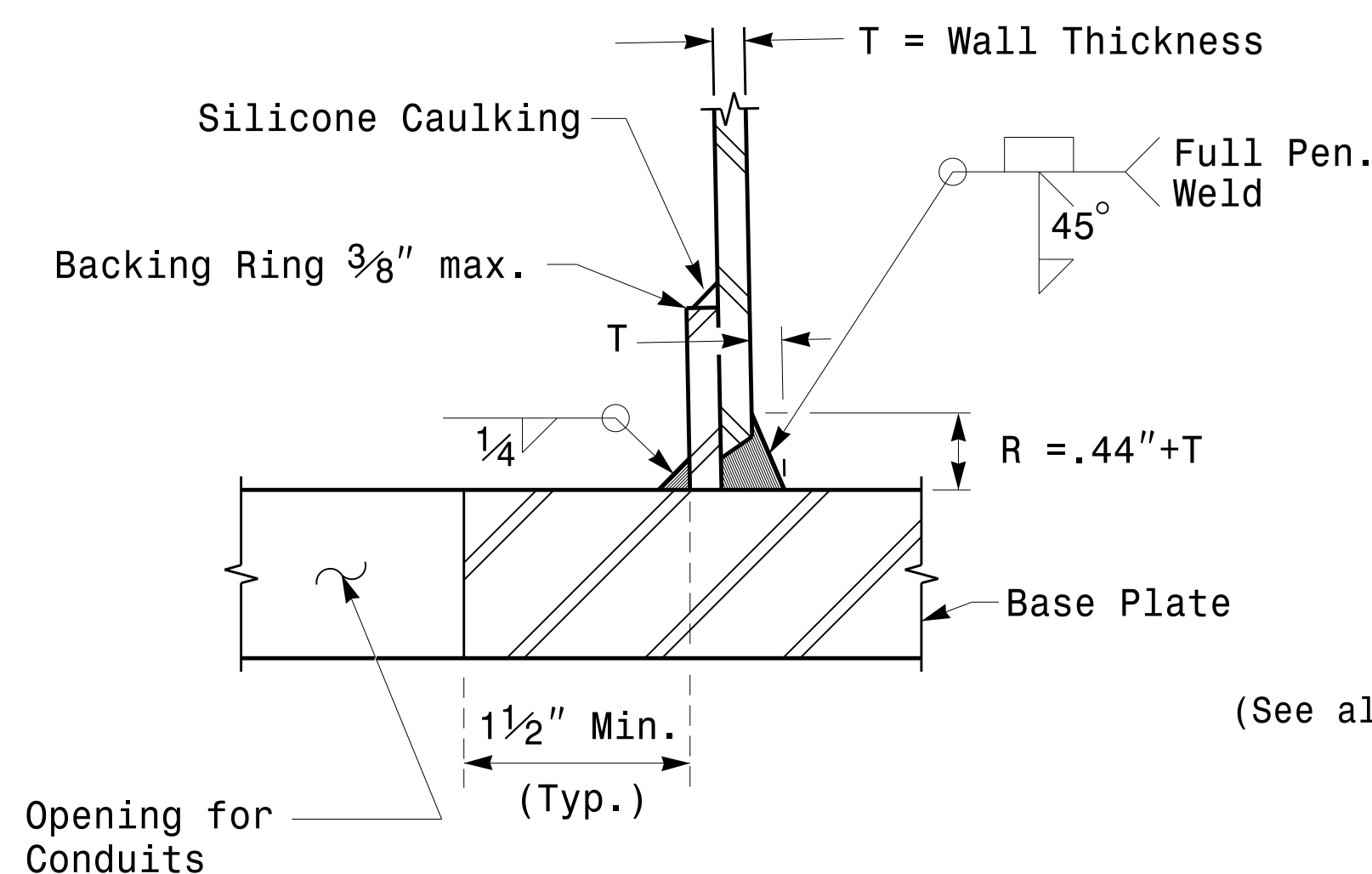
Cable Entrances at Top of Pole



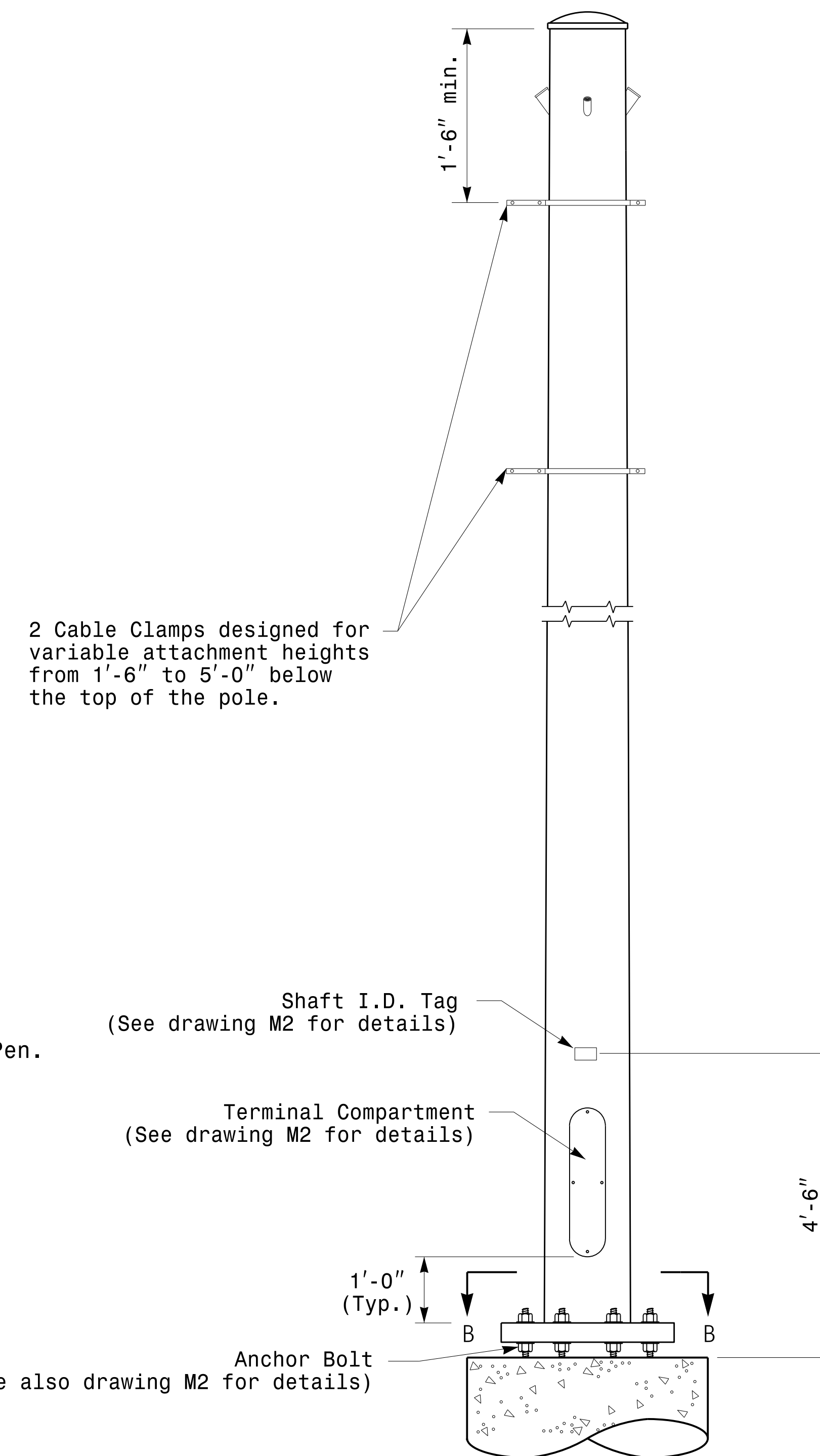
Section B-B Pole Base Plate Details (8 and 12 Bolt Pattern)



Section A-A Radial Orientation for Factory Installed Accessories at Top of Pole



Section C-C Full-Penetration Groove Weld Detail (Pole Attachment to Base Plate)



Monotube Strain Pole

Prepared in the Offices of:

 750 N. Greenleaf Pkwy, Garner, NC 27529

SCALE: 0 NA NONE

Typical Fabrication Details For Strain Poles

| | |
|-------------------------|---------------------------|
| PLAN DATE: OCTOBER 2017 | DESIGNED BY: K.C. DURIGON |
| PREPARED BY: N. BITTING | REVIEWED BY: D.C. SARKAR |
| REVISIONS | INIT. DATE |
| | |
| | |

SEAL

 DocuSigned by: Debesh C. Sarkar
 44EB87816FA4F49E
 10/11/2017
 DATE

Fabrication Details – Strain Poles