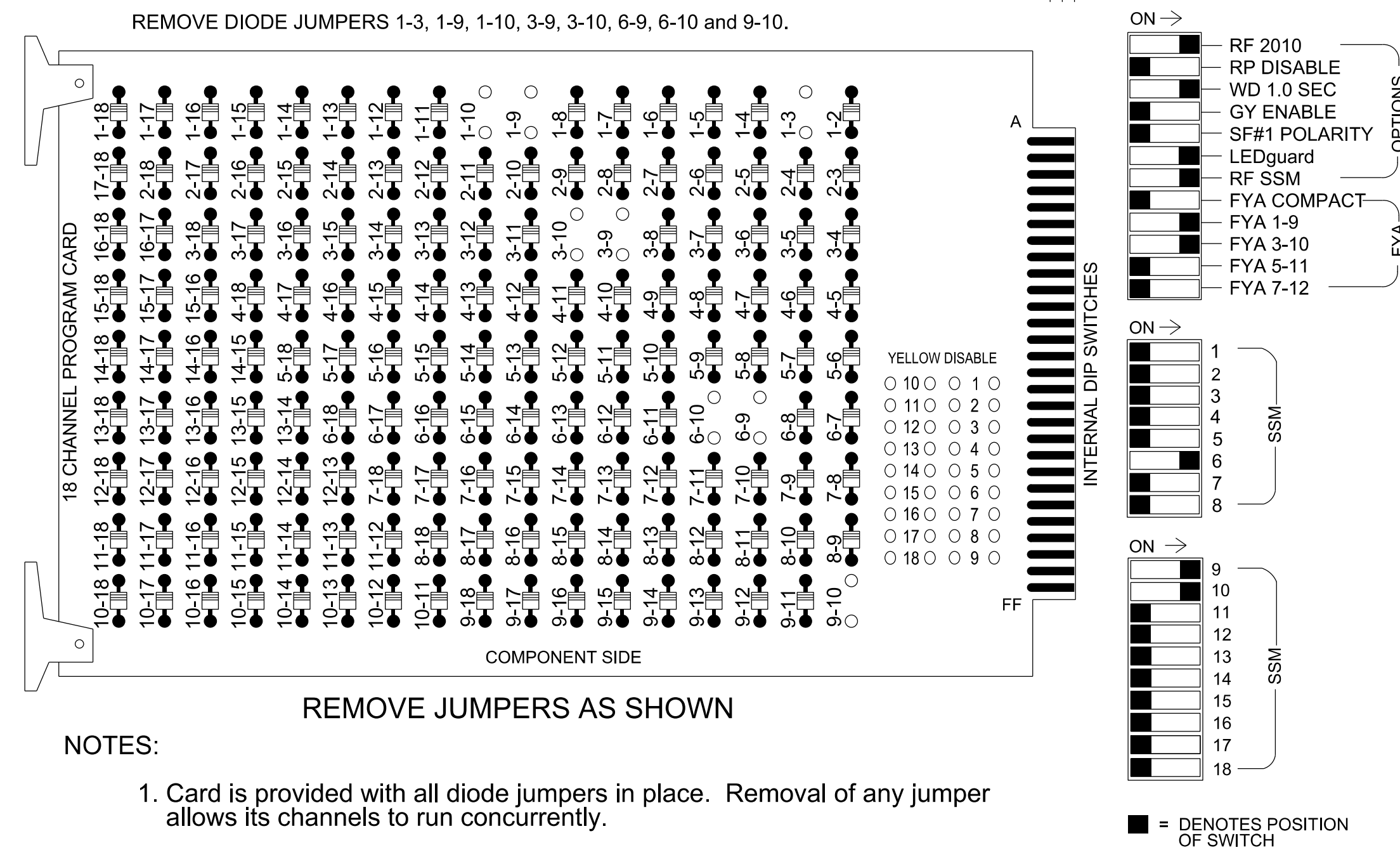


18 CHANNEL CONFLICT MONITOR PROGRAMMING DETAIL

(remove jumpers and set switches as shown)



NOTES

- To prevent "flash-conflict" problems, insert red flash program blocks for all unused vehicle load switches in the output file. The installer shall verify that signal heads flash in accordance with the signal plan.
- Program controller to start up in phase 6 Green No Walk.
- If this signal will be managed by an ATMS software, enable controller and detector logging for all detectors used at this location.

EQUIPMENT INFORMATION

Controller.....2070LX
 Cabinet.....332 w/ Aux
 Software.....Q-Free MAXTIME
 Cabinet Mount.....Base
 Output File Positions.....18 With Aux. Output File
 Load Switches Used.....S1,S4,S8,AUX S1,AUX S2
 Phases Used.....3,6
 Overlap "1".....NOT USED
 Overlap "2".....*
 Overlap "3".....NOT USED
 Overlap "4".....NOT USED
 Overlap "7".....*
 *See overlap programming detail on sheet 2.

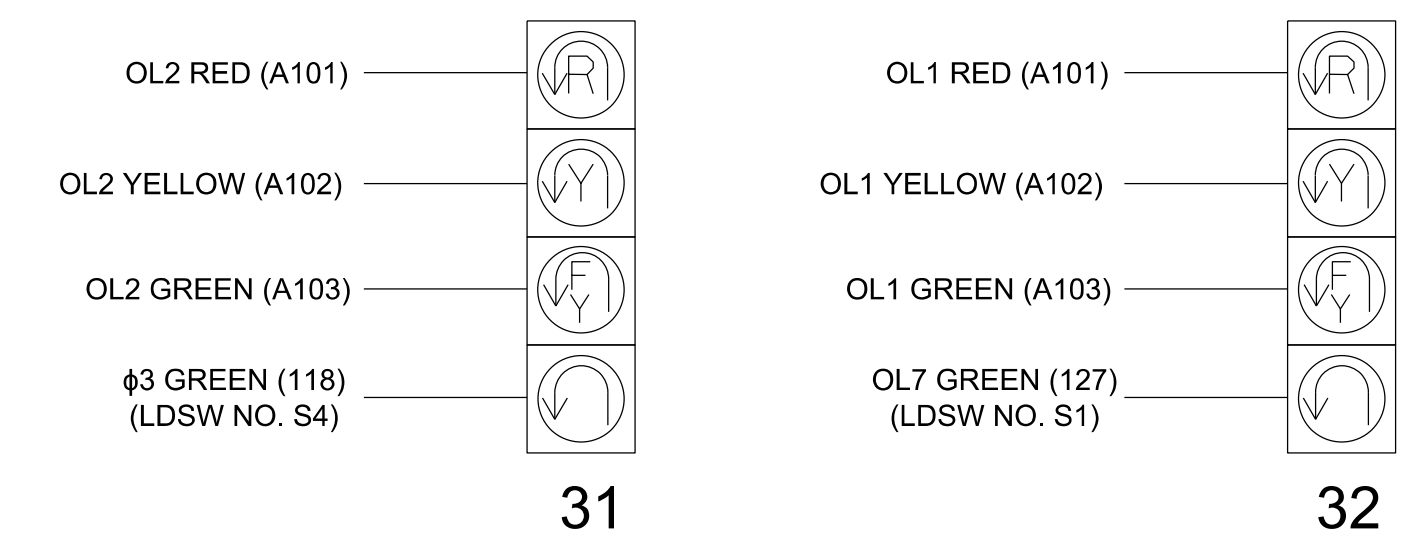
SIGNAL HEAD HOOK-UP CHART

LOAD SWITCH NO.	S1	S2	S3	S4	S5	S6	S7	S8	S9	S10	S11	S12	AUX S1	AUX S2	AUX S3	AUX S4	AUX S5	AUX S6
CMU CHANNEL NO.	1	2	13	3	4	14	5	6	15	7	8	16	9	10	17	11	12	18
PHASE	OL7	2	2 PED	3	4	4 PED	7	6	6 PED	7	8	8 PED	OL1	OL2	SPARE	OL3	OL4	SPARE
SIGNAL HEAD NO.	32*	NU	NU	31*	NU	NU	NU	61,62	NU	NU	NU	NU	32*	31*	NU	NU	NU	NU
RED								134										
YELLOW	*			*				135										
GREEN								136										
RED ARROW														A121	A124			
YELLOW ARROW														A122	A125			
FLASHING YELLOW ARROW														A123	A126			
GREEN ARROW	127			118														

NU = Not Used
 * Denotes install load resistor. See load resistor installation detail this sheet.
 * See pictorial of head wiring in detail this sheet.

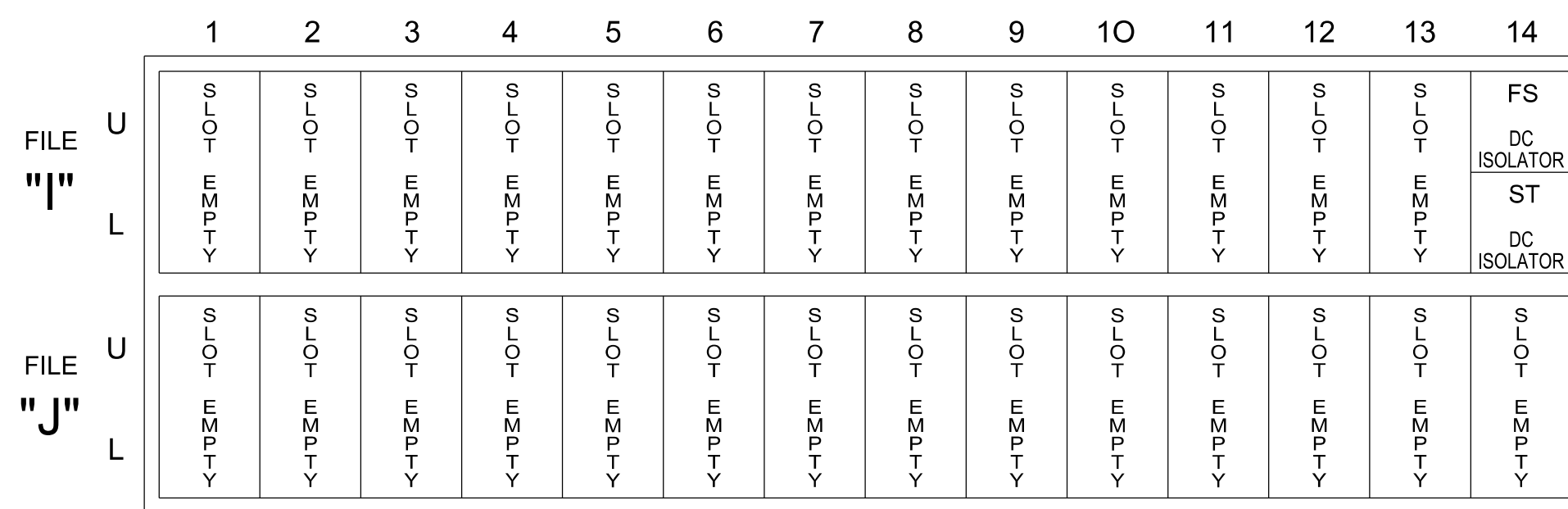
FYA SIGNAL WIRING DETAIL

(wire signal heads as shown)



INPUT FILE POSITION LAYOUT

(front view)



EX.: 1A, 2A, ETC. = LOOP NO.'S

FS = FLASH SENSE
 ST = STOP TIME

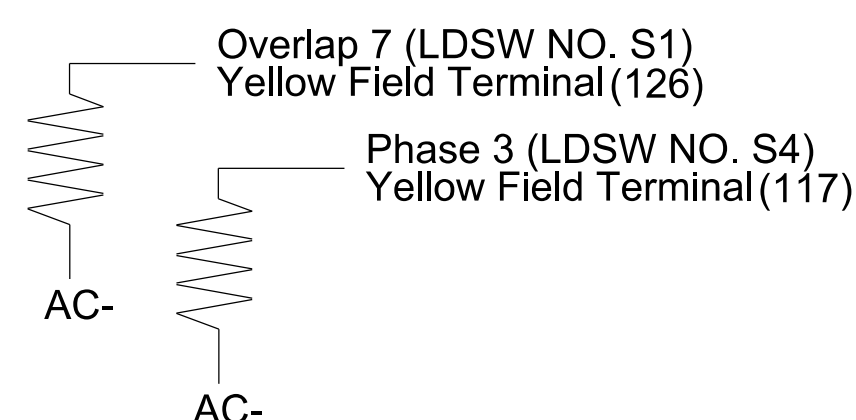
SPECIAL DETECTOR NOTE

Install a video detection system for vehicle detection. Perform installation according to manufacturer's directions and NCDOT engineer-approved mounting locations to accomplish the detection schemes shown on the Signal Design Plans.

LOAD RESISTOR INSTALLATION DETAIL

(install resistors as shown)

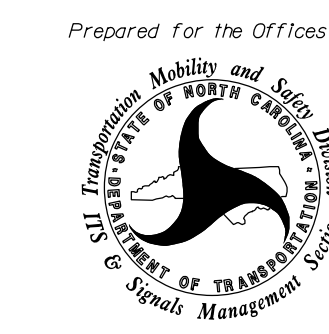
ACCEPTABLE VALUES	
Value (ohms)	Wattage
1.5K - 1.9K	25W (min)
2.0K - 3.0K	10W (min)



THIS ELECTRICAL DETAIL IS FOR THE SIGNAL DESIGN: 11-1468T3
 DESIGNED: May 2023
 SEALED: 5/24/2023
 REVISED: N/A

Temporary Installation - Electrical Detail 1 of 2 (Phase 11)

ELECTRICAL AND PROGRAMMING DETAILS FOR:



750 N. Greenfield Pkwy, Garner, NC 27529

US 421 - NC 16 at SR 1323 (Dancy Road)/ Lowe's Entrance East U-Turn

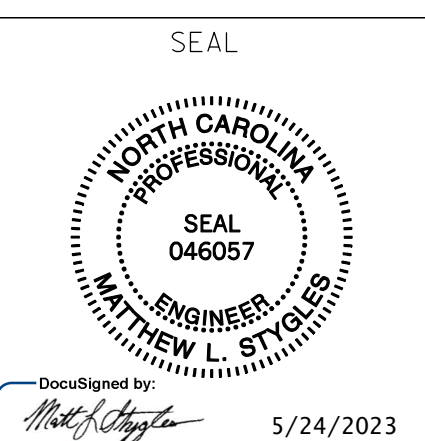
Division 11 Wilkes County Wilkesboro

PLAN DATE: May 2023 REVIEWED BY: M.L.Stygles
 PREPARED BY: S.R.Chiluka REVIEWED BY: J.Ma

REVISIONS	INIT.	DATE



DOCUMENT NOT CONSIDERED FINAL UNLESS ALL SIGNATURES COMPLETED



5/24/2023

SIG. INVENTORY NO. 11-1468T3

5/23/2019 3:15:01 PM R:\Traffic\cads\signal\4045\signal\4045\11-XXXX\Sig_Ele_Dancy_Rd_East_U_Turn.dgn schi1.luka