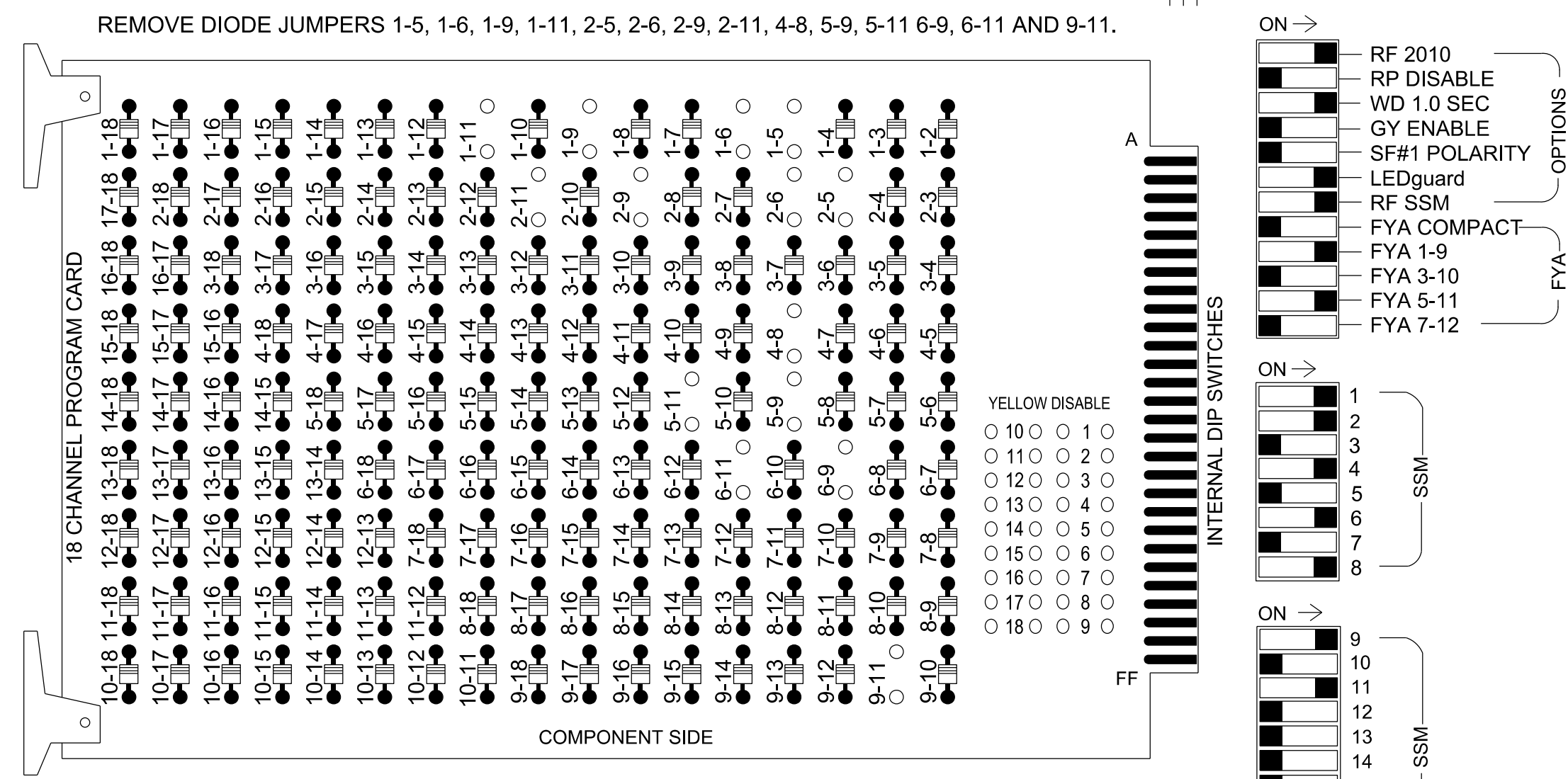


18 CHANNEL CONFLICT MONITOR PROGRAMMING DETAIL

(remove jumpers and set switches as shown)



NOTES:

- Card is provided with all diode jumpers in place. Removal of any jumper allows its channels to run concurrently.
- Ensure jumpers SEL2-SEL5 and SEL9 are present on the monitor board.
- Ensure that the Red Enable is active at all times during normal operation.
- Connect serial cable from conflict monitor to comm. port 1 of 2070 controller. Ensure conflict monitor communicates with 2070.

NOTES

- To prevent "flash-conflict" problems, insert red flash program blocks for all unused vehicle load switches in the output file. The installer shall verify that signal heads flash in accordance with the signal plan.
- Program phases 4 and 8 for Dual Entry.
- Program controller to start up in phase 2 Green No Walk and 6 Green No Walk.
- If this signal will be managed by an ATMS software, enable controller and detector logging for all detectors used at this location.

EQUIPMENT INFORMATION

Controller.....2070LX
 Cabinet.....332 w/ Aux
 Software.....Q-Free MAXTIME
 Cabinet Mount.....Base
 Output File Positions.....18 With Aux. Output File
 Load Switches Used.....S1, S2, S5, S7, S8, S11, AUX S1, AUX S2
 Phases Used.....1, 2, 4, 5, 6, 8
 Overlap "1".....*
 Overlap "2".....NOT USED
 Overlap "3".....*
 Overlap "4".....NOT USED

*See overlap programming detail this sheet

SIGNAL HEAD HOOK-UP CHART

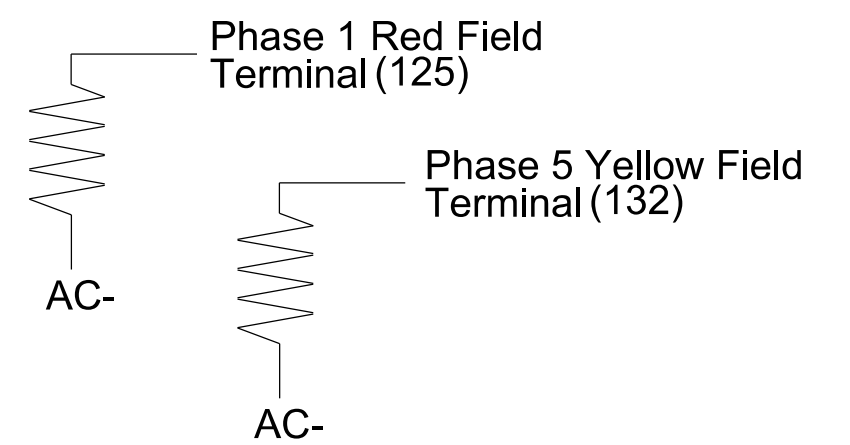
LOAD SWITCH NO.	S1	S2	S3	S4	S5	S6	S7	S8	S9	S10	S11	S12	AUX S1	AUX S2	AUX S3	AUX S4	AUX S5	AUX S6
CMU CHANNEL NO.	1	2	13	3	4	14	5	6	15	7	8	16	9	10	17	11	12	18
PHASE	1	2	2 PED	3	4	4 PED	5	6	6 PED	7	8	8 PED	OL1	OL2	SPARE	OL3	OL4	SPARE
SIGNAL HEAD NO.	11*	82	21,22	NU	41,42	NU	51*	61,62	NU	81,82	NU	11*	NU	NU	51*	NU	NU	NU
RED	*	128			101			134			107							
YELLOW					102		*	135			108							
GREEN					103			136			109							
RED ARROW													A121				A114	
YELLOW ARROW		128											A122				A115	
FLASHING YELLOW ARROW													A123				A116	
GREEN ARROW	127	127						133										

NU = Not Used
 * Denotes install load resistor. See load resistor installation detail this sheet.
 *See pictorial of head wiring in detail this sheet.

LOAD RESISTOR INSTALLATION DETAIL

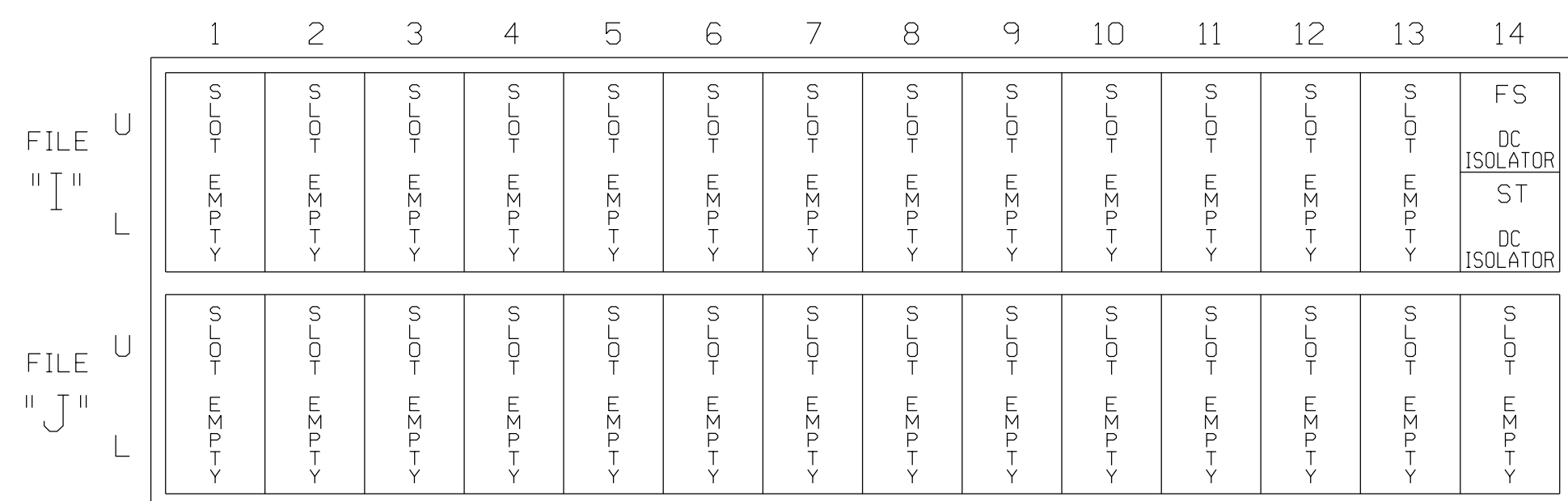
(install resistors as shown)

ACCEPTABLE VALUES	
Value (ohms)	Wattage
1.5K - 1.9K	25W (min)
2.0K - 3.0K	10W (min)



INPUT FILE POSITION LAYOUT

(front view)



* Wired Input - Do not populate slot with detector card

SPECIAL DETECTOR NOTE

Install a video detection system for vehicle detection. Perform installation according to manufacturer's directions and NCDOT engineer-approved mounting locations to accomplish the detection schemes shown on the Signal Design Plans.

FLASHER CIRCUIT MODIFICATION DETAIL

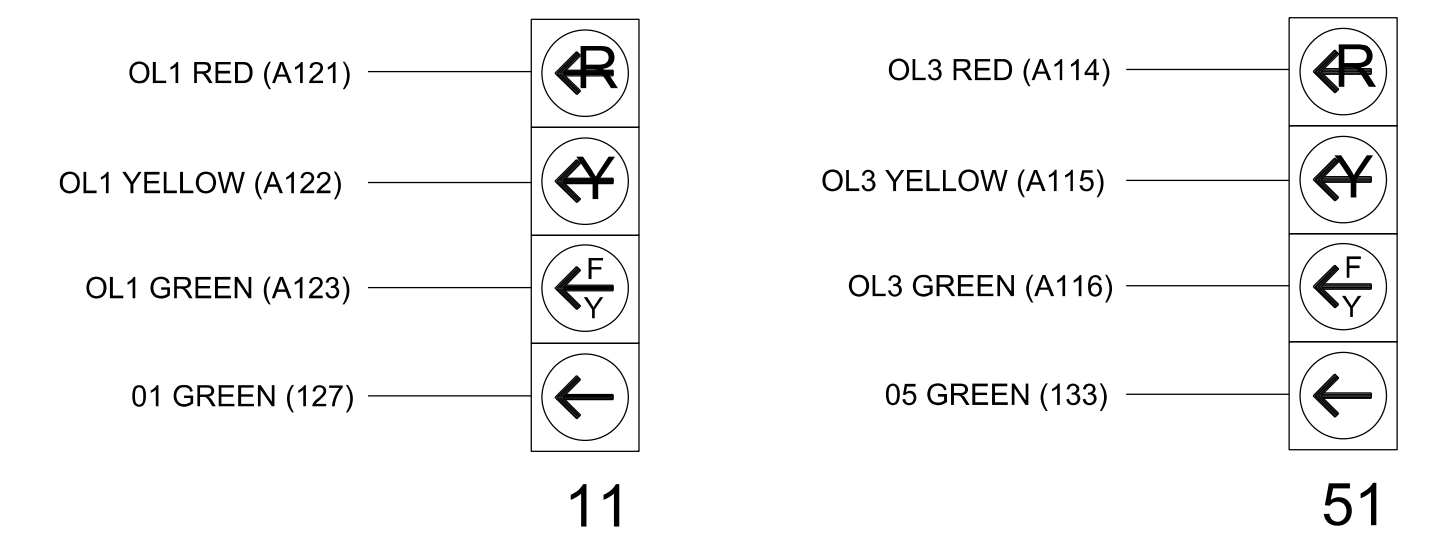
IN ORDER TO ENSURE THAT SIGNALS FLASH CONCURRENTLY ON THE SAME APPROACH, MAKE THE FOLLOWING FLASHER CIRCUIT CHANGES:

- ON REAR OF PDA - REMOVE WIRE FROM TERM. T2-4 AND TERMINATE ON T2-2.
- ON REAR OF PDA - REMOVE WIRE FROM TERM. T2-5 AND TERMINATE ON T2-3.
- REMOVE FLASHER UNIT 2.

THE CHANGES LISTED ABOVE TIES ALL PHASES AND OVERLAPS TO FLASHER UNIT 1.

FYA SIGNAL WIRING DETAIL

(wire signal heads as shown)



OVERLAP PROGRAMMING

Front Panel
 Main Menu >Controller >Overlap >Overlap Parameters/Overlap Timings

Web Interface
 Home >Controller >Overlap Configuration >Overlaps

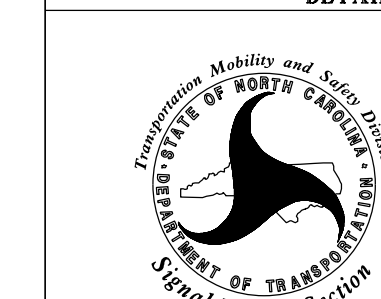
Overlap Plan 1

Overlap	1	3
Type	FYA 4 - Section	FYA 4 - Section
Included Phases	2	6
Modifier Phases	1	5
Traffic Green	0	0
Traffic Yellow	0.0	0.0
Traffic Red	0.0	0.0

THIS ELECTRICAL DETAIL IS FOR THE SIGNAL DESIGN: 11-1332T1
 DESIGNED: May 2023
 SEALED: 5/24/2023
 REVISED: N/A

Temporary Installation - Electrical Detail 1 of 1 (Phase 8)

ELECTRICAL AND PROGRAMMING DETAILS FOR:



750 N. Greenfield Pkwy, Garner, NC 27529

US 421 - NC 16
 at
 SR 1323 (Dancy Rd)/
 Lowe's Entrance

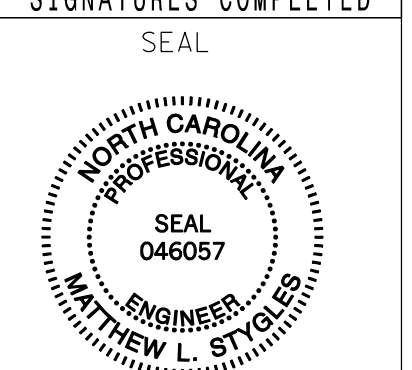
Division 11 Wilkes County Wilkesboro

PLAN DATE: May 2023 REVIEWED BY: M.L.Stygles

PREPARED BY: S.R.Chiluka REVIEWED BY: J.Ma

REVISIONS INIT. DATE

DOCUMENT NOT CONSIDERED FINAL UNLESS ALL SIGNATURES COMPLETED



DocuSigned by: Matthew L. Stygles 5/24/2023

SIG. INVENTORY NO. II-1332T1