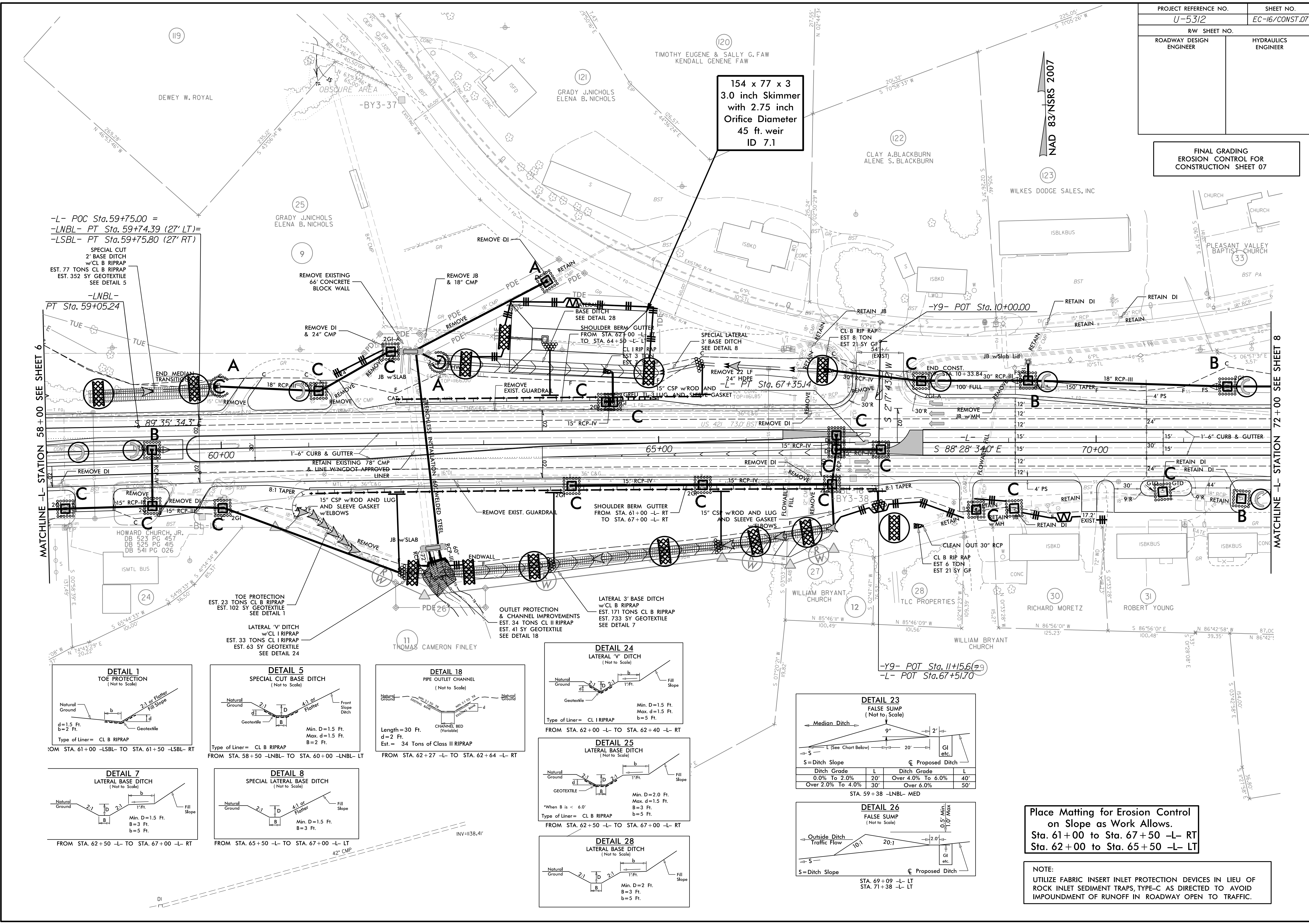


**FINAL GRADING  
EROSION CONTROL FOR  
CONSTRUCTION SHEET 07**



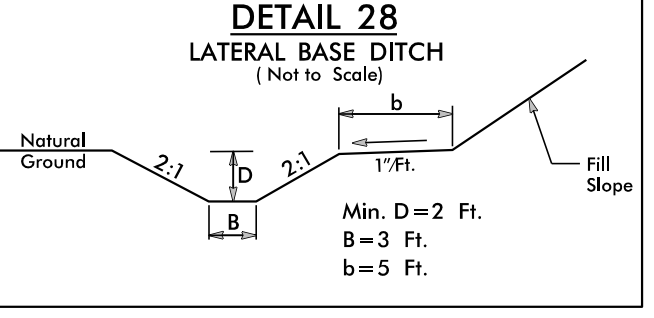
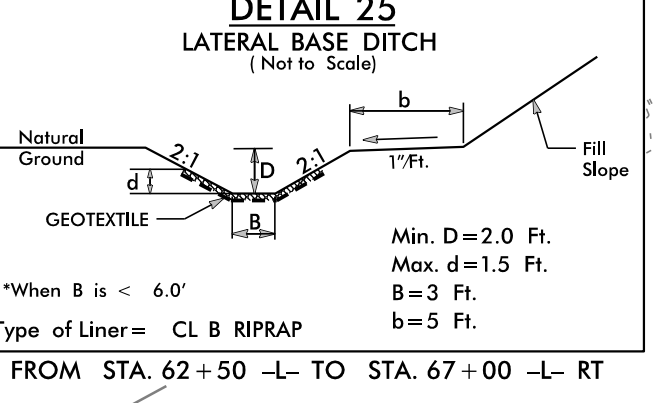
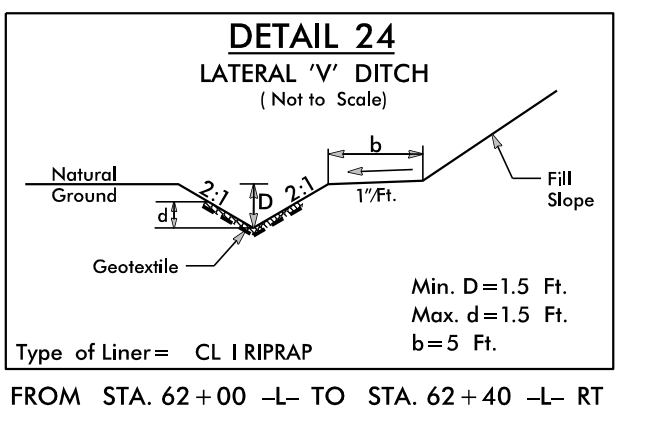
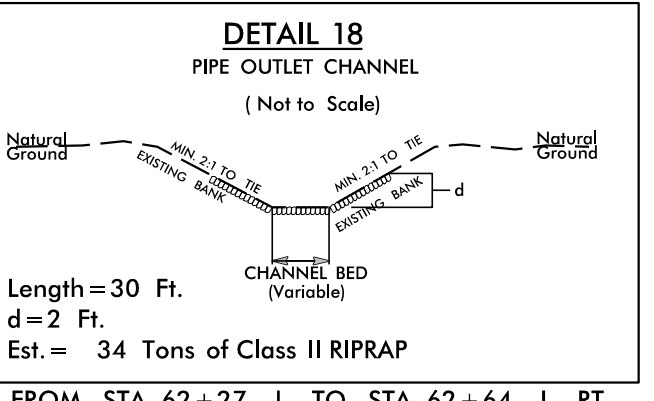
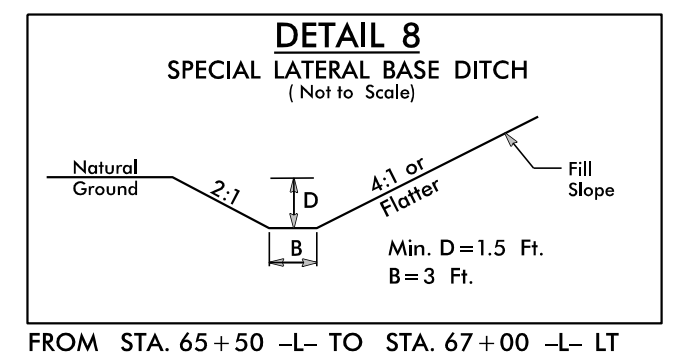
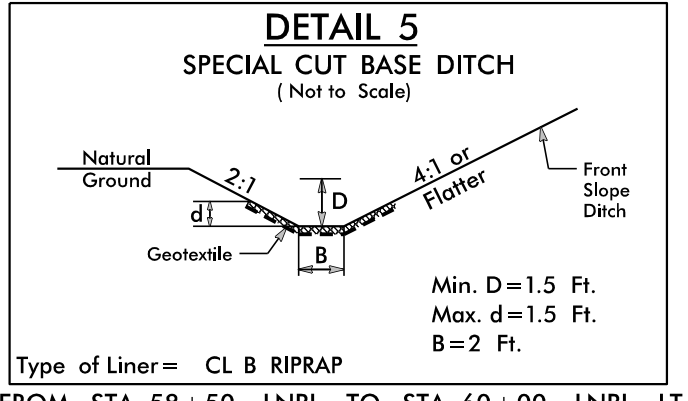
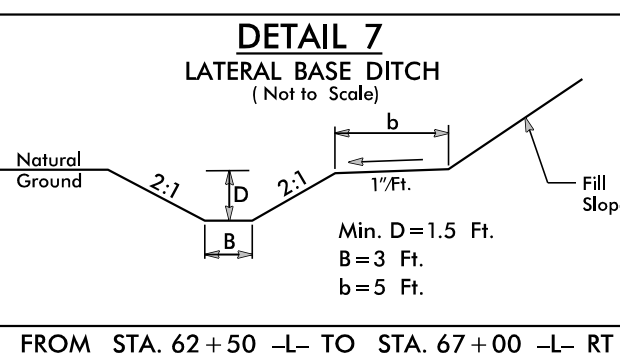
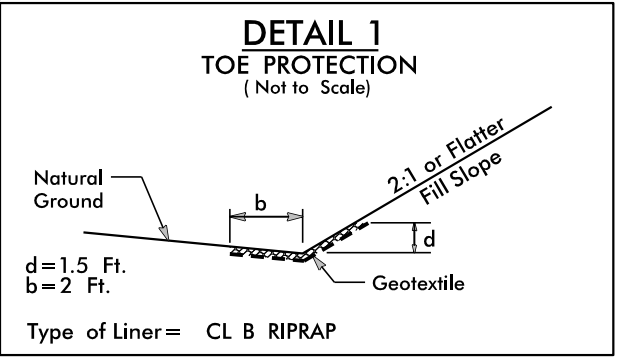
-L- POC Sta. 59+75.00 =  
-LNBL- PT Sta. 59+74.39 (27' LT) =  
-LSBL- PT Sta. 59+75.80 (27' RT) =

SPECIAL CUT  
2' BASE DITCH  
w/CL B RIPRAP  
EST. 77 TONS CL B RIPRAP  
EST. 352 SY GEOTEXTILE  
SEE DETAIL 5

-LNBL-  
PT Sta. 59+05.24

MATCHLINE -L- STATION 58+00 SEE SHEET 6

MATCHLINE -L- STATION 72+00 SEE SHEET 8



**DETAIL 23**  
FALSE SUMP  
(Not to Scale)

Median Ditch  
S = Ditch Slope  
L = Proposed Ditch

Ditch Grade	L	Ditch Grade	L
0.0% To 2.0%	20'	Over 4.0% To 6.0%	40'
Over 2.0% To 4.0%	30'	Over 6.0%	50'

STA. 59+38 -LNBL- MED

**DETAIL 26**  
FALSE SUMP  
(Not to Scale)

Outside Ditch  
Traffic Flow  
S = Ditch Slope  
L = Proposed Ditch

Ditch Grade	L	Ditch Grade	L
0.0% To 2.0%	20'	Over 4.0% To 6.0%	40'
Over 2.0% To 4.0%	30'	Over 6.0%	50'

STA. 69+09 -L- LT  
STA. 71+38 -L- LT

**Place Matting for Erosion Control  
on Slope as Work Allows.  
Sta. 61+00 to Sta. 67+50 -L- RT  
Sta. 62+00 to Sta. 65+50 -L- LT**

**NOTE:**  
UTILIZE FABRIC INSERT INLET PROTECTION DEVICES IN LIEU OF  
ROCK INLET SEDIMENT TRAPS, TYPE-C AS DIRECTED TO AVOID  
IMPOUNDMENT OF RUNOFF IN ROADWAY OPEN TO TRAFFIC.