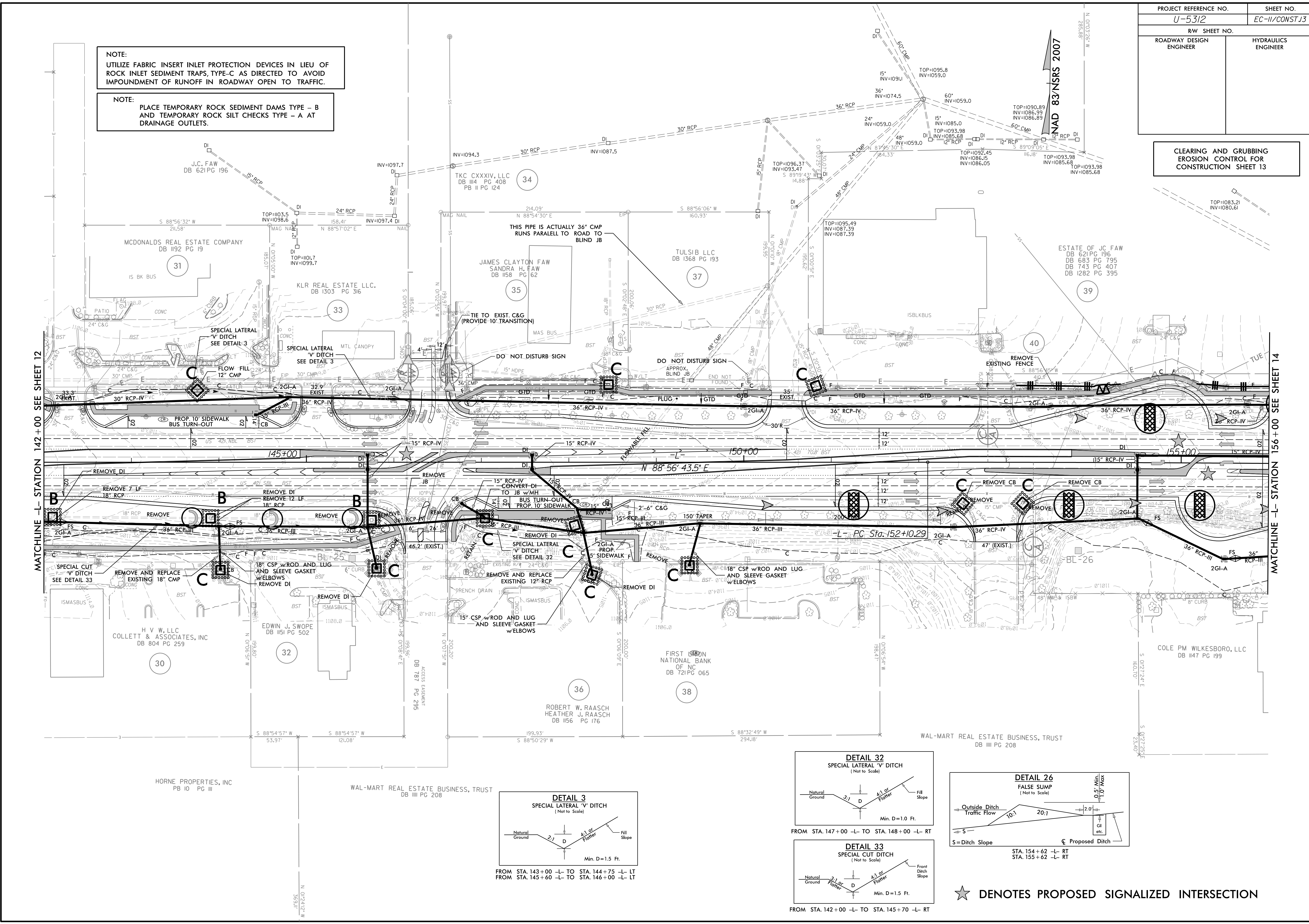


PROJECT REFERENCE NO. U-5312	SHEET NO. EC-II/CONSTJ3
RW SHEET NO.	
ROADWAY DESIGN ENGINEER	HYDRAULICS ENGINEER

CLEARING AND GRUBBING EROSION CONTROL FOR CONSTRUCTION SHEET 13

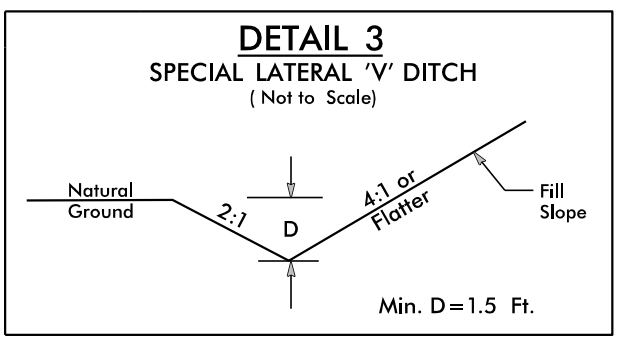
NOTE:
UTILIZE FABRIC INSERT INLET PROTECTION DEVICES IN LIEU OF ROCK INLET SEDIMENT TRAPS, TYPE-C AS DIRECTED TO AVOID IMPOUNDMENT OF RUNOFF IN ROADWAY OPEN TO TRAFFIC.

NOTE:
PLACE TEMPORARY ROCK SEDIMENT DAMS TYPE - B AND TEMPORARY ROCK SILT CHECKS TYPE - A AT DRAINAGE OUTLETS.

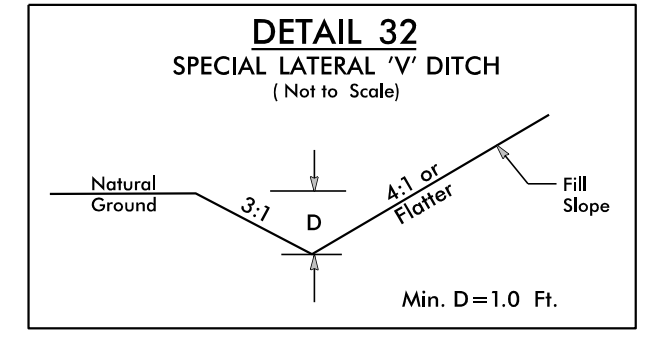


MATCHLINE -L- STATION 142+00 SEE SHEET 12

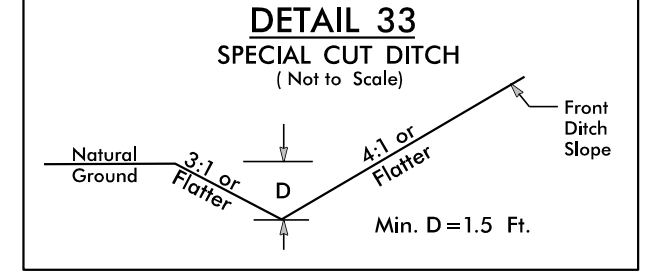
MATCHLINE -L- STATION 156+00 SEE SHEET 14



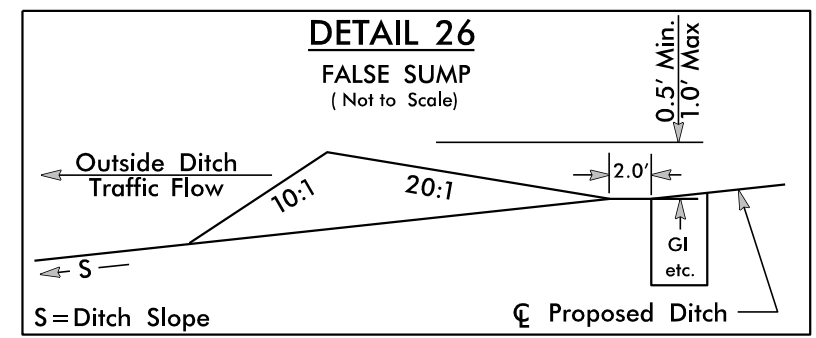
FROM STA. 143+00 -L- TO STA. 144+75 -L- LT
FROM STA. 145+60 -L- TO STA. 146+00 -L- LT



FROM STA. 147+00 -L- TO STA. 148+00 -L- RT



FROM STA. 142+00 -L- TO STA. 145+70 -L- RT



STA. 154+62 -L- RT
STA. 155+62 -L- RT

★ DENOTES PROPOSED SIGNALIZED INTERSECTION