

54" CSP'S EXTENSIONS INSTALLATION SEQUENCE STA. 110+25 -L- UT TO MILLERS CREEK

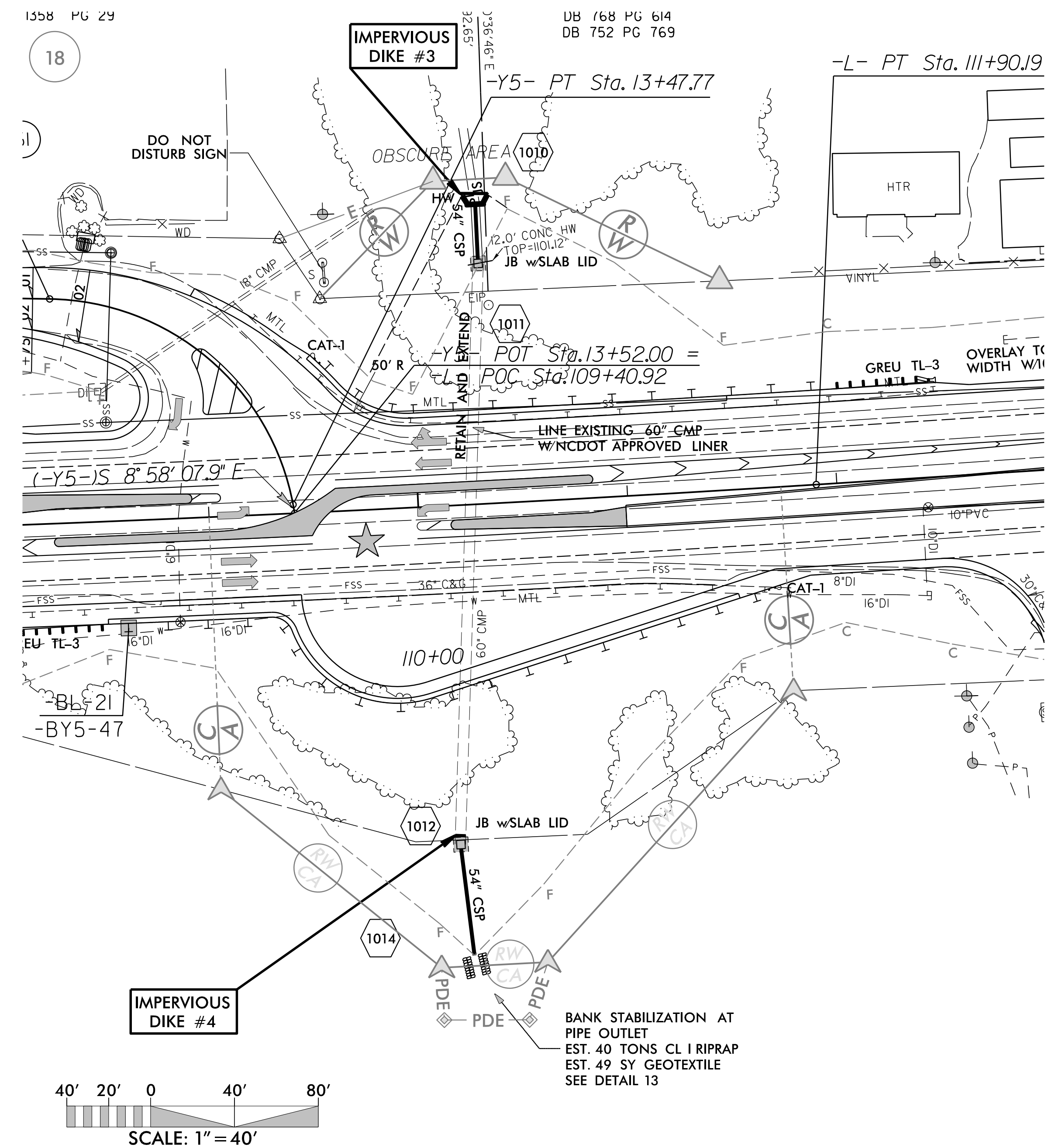
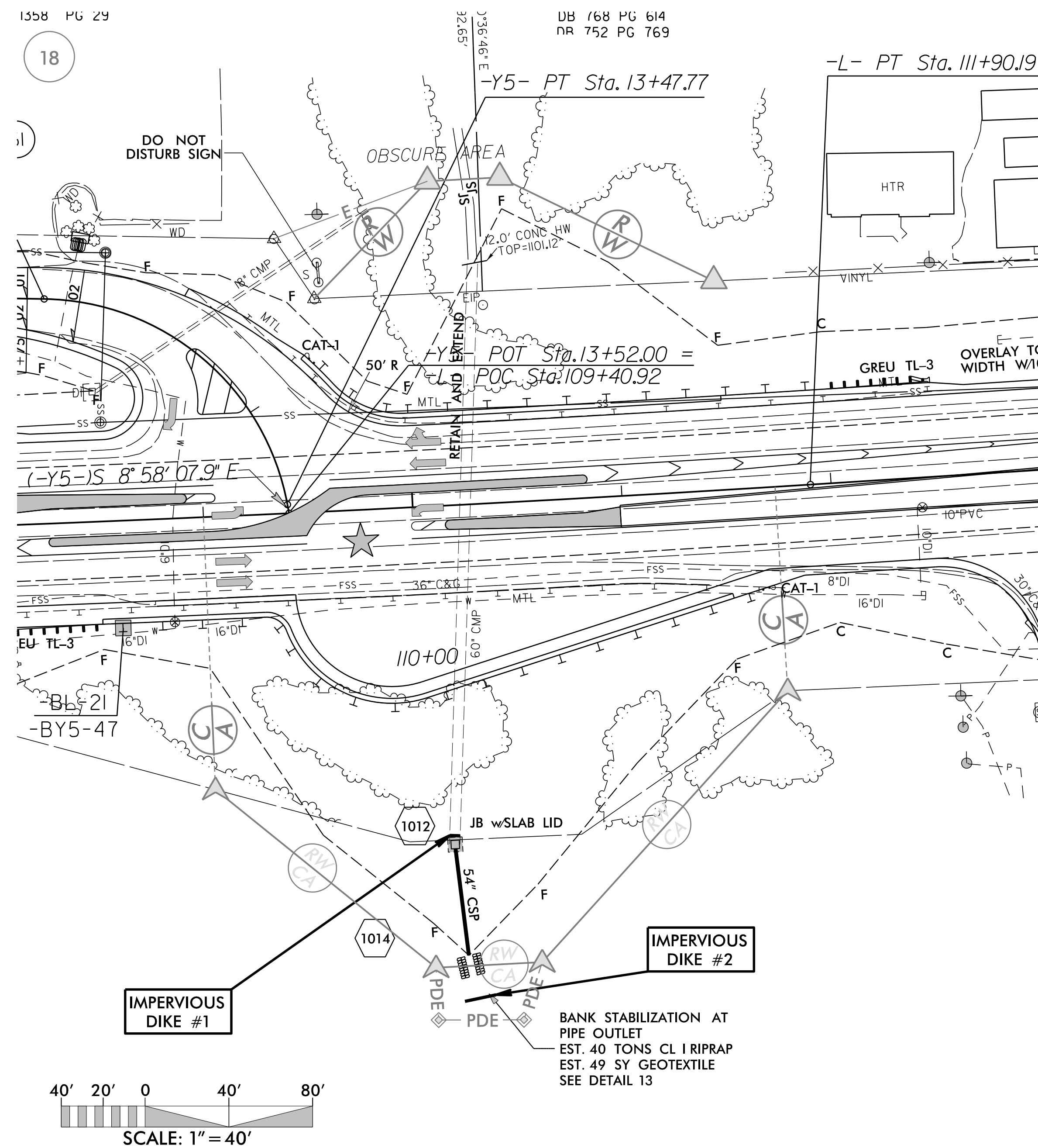
PROJECT REFERENCE NO. U-5312	SHEET NO. EC-08A/CONST.10
RW SHEET NO.	
ROADWAY DESIGN ENGINEER	HYDRAULICS ENGINEER

PHASE I

- 1.) UTILIZE SPECIAL STILLING BASIN(S) AS NEEDED THROUGHOUT PIPE INSTALLATION.
- 2.) INSTALL DOWNSTREAM PUMPS AND TEMPORARY FLEXIBLE HOSES.
- 3.) INSTALL IMPERVIOUS DIKES #1 AND #2 AND BEGIN PUMPING OPERATIONS FOR STREAM DIVERSION.
- 4.) DEWATER DOWNSTREAM CONSTRUCTION AREA, UTILIZING SPECIAL STILLING BASIN(S) FOR PUMPED EFFLUENT.
- 5.) CONSTRUCT DOWNSTREAM JUNCTION BOX WITH SLAB, 54" CSP, AND BANK STABILIZATION AT PIPE OUTLET IN ACCORDANCE WITH THE PLANS.
- 6.) EXCAVATE ANY ACCUMULATED SILT AND DEWATER BEFORE REMOVAL OF IMPERVIOUS DIKES.
- 7.) REMOVE IMPERVIOUS DIKES, DOWNSTREAM PUMPS, AND TEMPORARY FLEXIBLE HOSES.
- 8.) DIRECT FLOW THROUGH 54" CSP.

PHASE II

- 1.) INSTALL UPSTREAM PUMPS AND TEMPORARY FLEXIBLE HOSES.
- 2.) INSTALL IMPERVIOUS DIKES #3 AND #4 AND BEGIN PUMPING OPERATIONS FOR STREAM DIVERSION.
- 3.) DEWATER UPSTREAM CONSTRUCTION AREA UTILIZING SPECIAL STILLING BASIN(S) FOR PUMPED EFFLUENT.
- 4.) LINE EXISTING 60" CMP W/NC DOT APPROVED LINER.
- 5.) CONSTRUCT UPSTREAM JUNCTION BOX WITH SLAB, 54" CSP, AND HEADWALL IN ACCORDANCE WITH THE PLANS.
- 6.) EXCAVATE ANY ACCUMULATED SILT AND DEWATER BEFORE REMOVAL OF IMPERVIOUS DIKES.
- 7.) REMOVE ANY REMAINING SPECIAL STILLING BASIN(S), IMPERVIOUS DIKES, UPSTREAM PIPES, AND TEMPORARY FLEXIBLE HOSES.
- 8.) DIRECT FLOW THROUGH 54" CSP.
- 9.) COMPLETE ROADWAY.



NAD 83/NSRS 2007

NAD 83/NSRS 2007