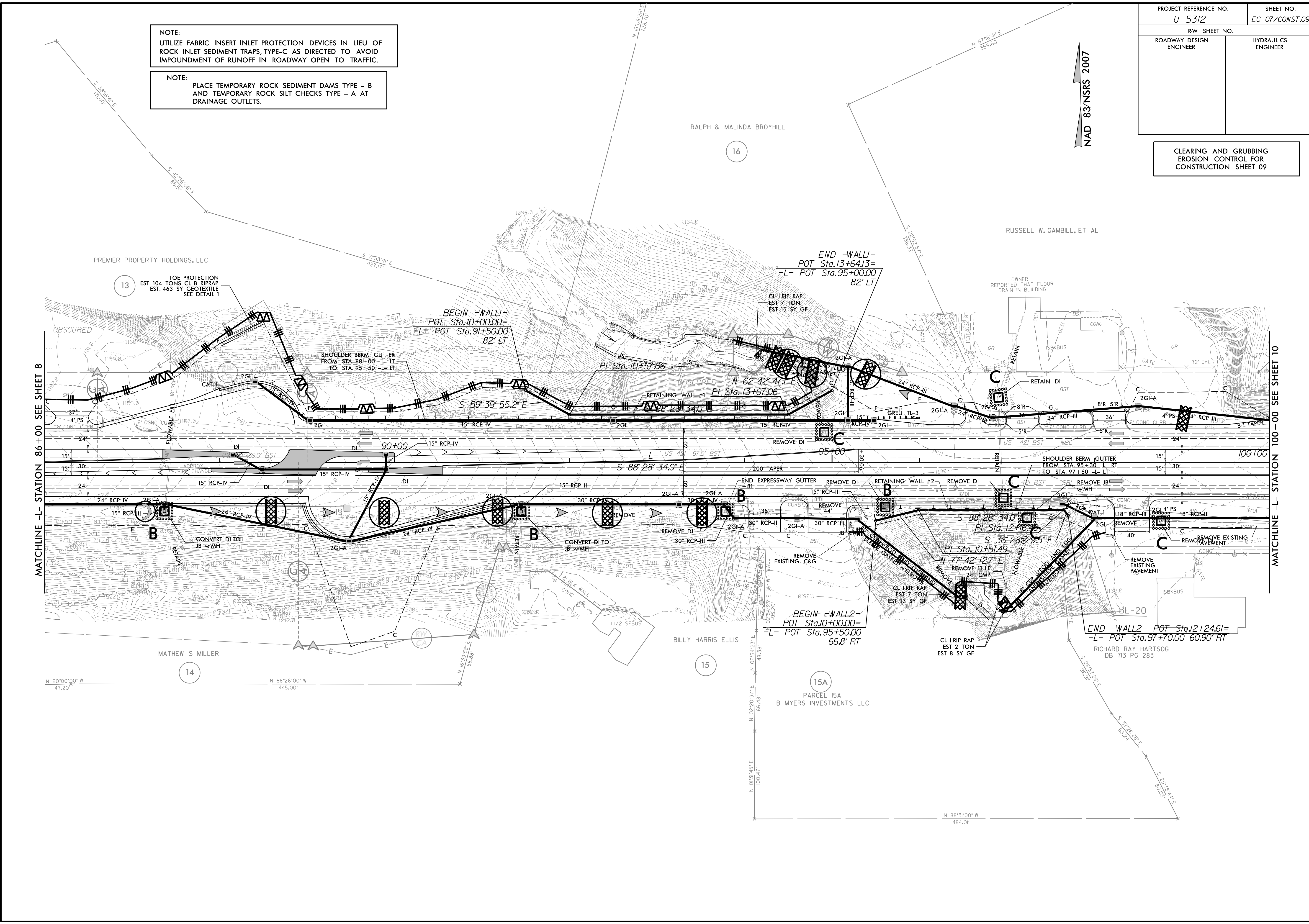


PROJECT REFERENCE NO.	SHEET NO.
U-5312	EC-07/CONST.09
RW SHEET NO.	
ROADWAY DESIGN ENGINEER	HYDRAULICS ENGINEER

CLEARING AND GRUBBING
EROSION CONTROL FOR
CONSTRUCTION SHEET 09

NOTE:
UTILIZE FABRIC INSERT INLET PROTECTION DEVICES IN LIEU OF
ROCK INLET SEDIMENT TRAPS, TYPE-C AS DIRECTED TO AVOID
IMPOUNDMENT OF RUNOFF IN ROADWAY OPEN TO TRAFFIC.

NOTE:
PLACE TEMPORARY ROCK SEDIMENT DAMS TYPE - B
AND TEMPORARY ROCK SILT CHECKS TYPE - A AT
DRAINAGE OUTLETS.



13 TOE PROTECTION
EST. 104 TONS CL B RIPRAP
EST. 463 SY GEOTEXTILE
SEE DETAIL 1

BEGIN -WALL1-
POT Sta. 10+00.00=
-L- POT Sta. 91+50.00
82' LT

END -WALL1-
POT Sta. 13+64.13=
-L- POT Sta. 95+00.00
82' LT

BEGIN -WALL2-
POT Sta. 10+00.00=
-L- POT Sta. 95+50.00
66.8' RT

END -WALL2- POT Sta. 12+24.61=
-L- POT Sta. 97+70.00 60.90' RT

NAD 83 NRS 2007

MATCHLINE -L- STATION 86+00 SEE SHEET 8

MATCHLINE -L- STATION 100+00 SEE SHEET 10