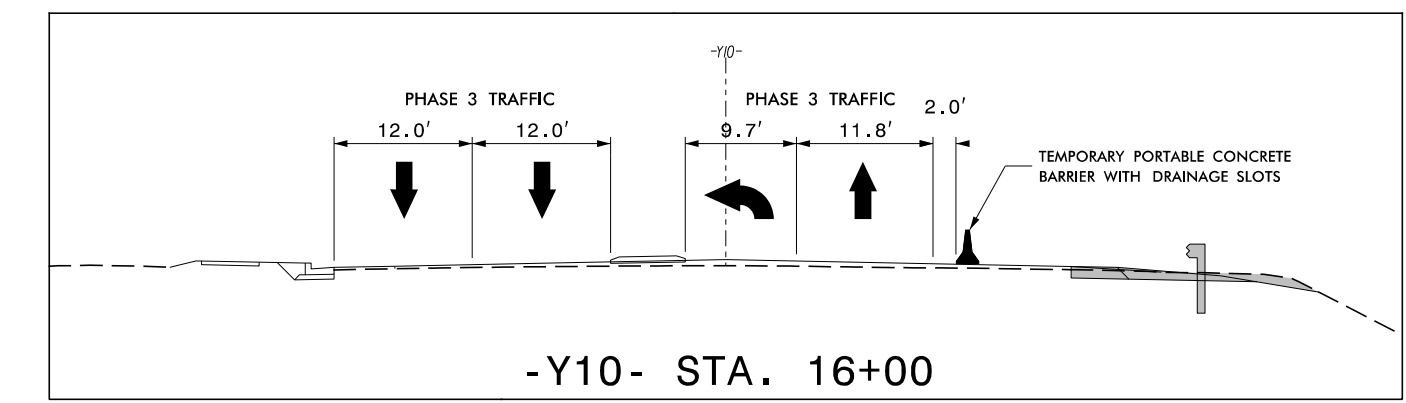


TEMPORARY PORTABLE  
CONCRETE BARRIER W/  
DRAINAGE SLOTS



-L- STA 183+39

TEMPORARY PORTABLE  
CONCRETE BARRIER W/  
DRAINAGE SLOTS

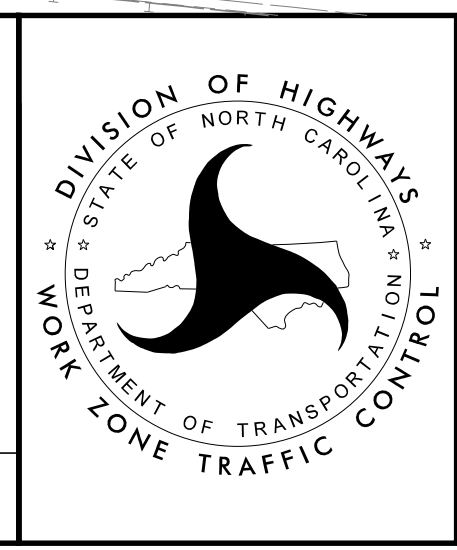
NOTE: INSTALL TEMPORARY PAINT PAVEMENT MARKINGS  
IN ACCORDANCE WITH FINAL PAVEMENT MARKING PLANS  
UNLESS SPECIFIED OTHERWISE.

8/9/2023 R:\Traffic\TrafficControl\CP\U5312\_fc\_tmp12.dgn User:jtowndsend

APPROVED: \_\_\_\_\_  
DATE: \_\_\_\_\_

8/10/2023

**DOCUMENT NOT CONSIDERED FINAL  
UNLESS ALL SIGNATURES COMPLETED**



PHASE 3 DETAIL