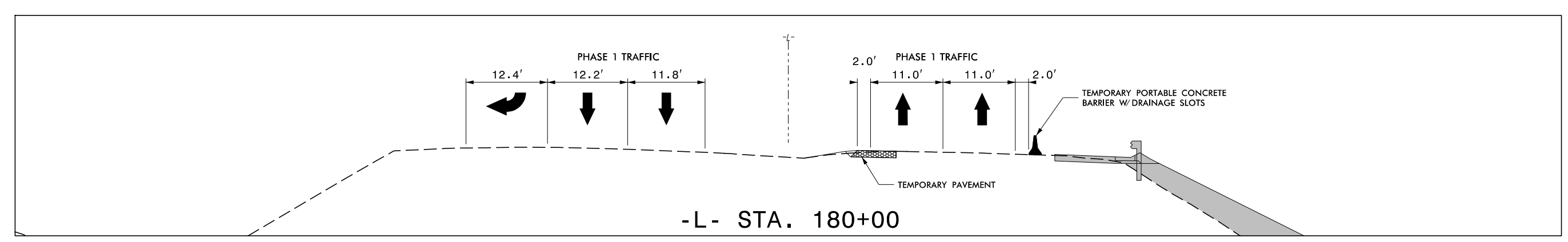
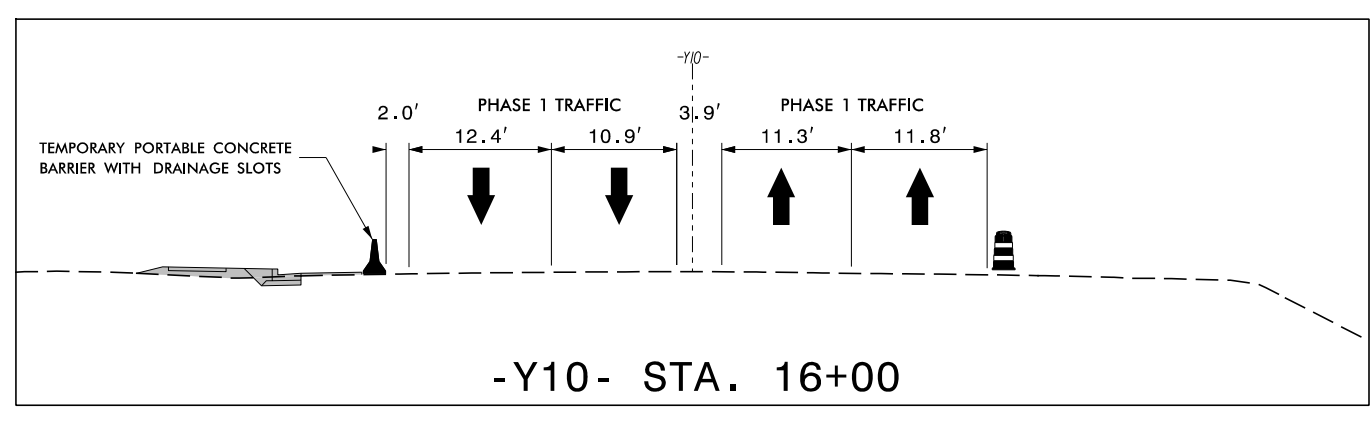


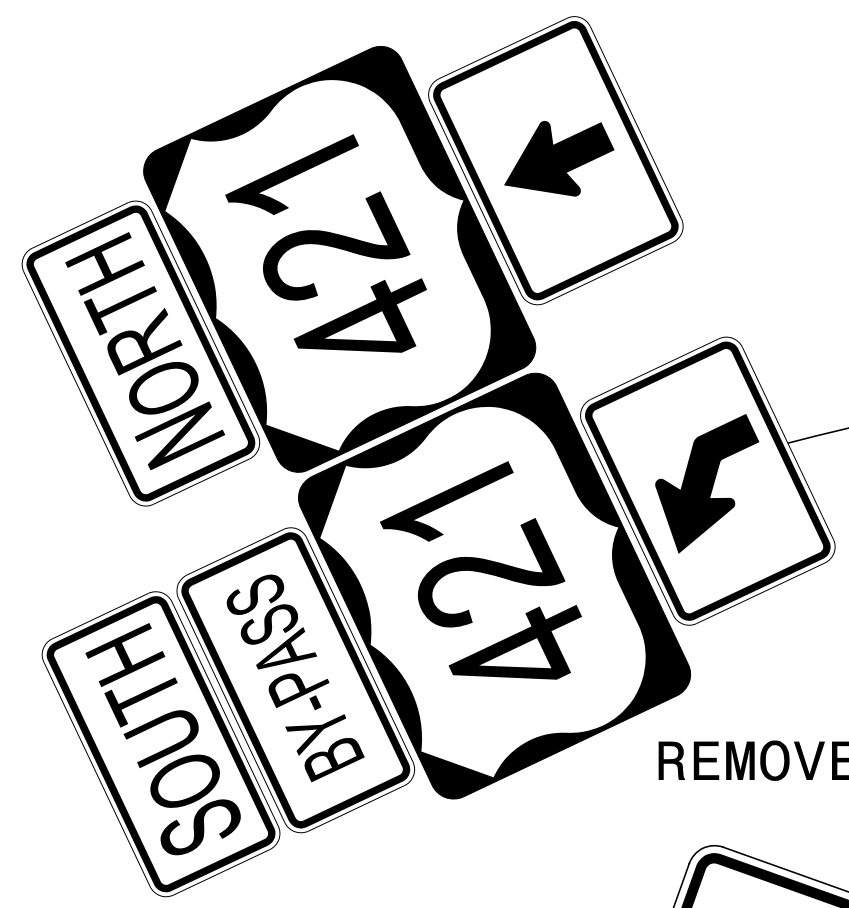
MESSAGE NO. 1	MESSAGE NO. 2
NO LEFT TURN	UTURN AT NEXT SIGNAL
CHANGEABLE MESSAGE SIGN	

(A)

INSTALL CMS DURING
-Y11- CLOSURE



INSTALL TEMPORARY PORTABLE CONCRETE BARRIER WITH DRAINAGE SLOTS FOR DRAINAGE INSTALLATION FROM STRUCTURE 1514 TO 1644. MAINTAIN ONE DRIVEWAY AT ALL TIMES.



REMOVE OVERHEAD SIGN ASSEMBLY

REMOVE EXIST. MARKINGS



-Y10- US 421 BUS.

-L- US 421

4' LANE SHIFT OVER 200'

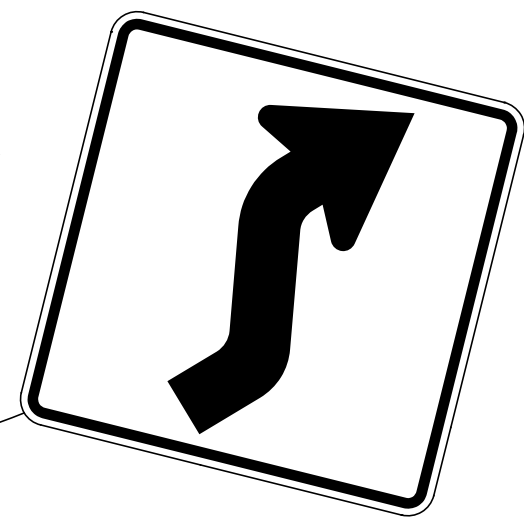
BEGIN PCB
-L- STA 174+40

TEMPORARY PAVEMENT

TEMPORARY PORTABLE CONCRETE BARRIER W/ DRAINAGE SLOTS

TRENCHLESS INSTALLATION

IN ACCORDANCE WITH THE TIME RESTRICTIONS ON TMP-2, CLOSE THE INSIDE TRAVEL LANE ON -L- (US 421) TO COMPLETE TEMPORARY WIDENING. SEE RSD 1101.02, SHEET 3 OF 14 FOR DETAIL.



SEE RSD 1101.04, SHEET 1 OF 1 FOR ADVANCE TRAFFIC CONTROL DEVICES

APPROVED: _____			<p>PHASE 1 DETAIL</p>
DATE: _____			

8/9/2023
R:\Traffic\TrafficControl\CP\U5312_fc_tmp04.dgn
User:jtowns