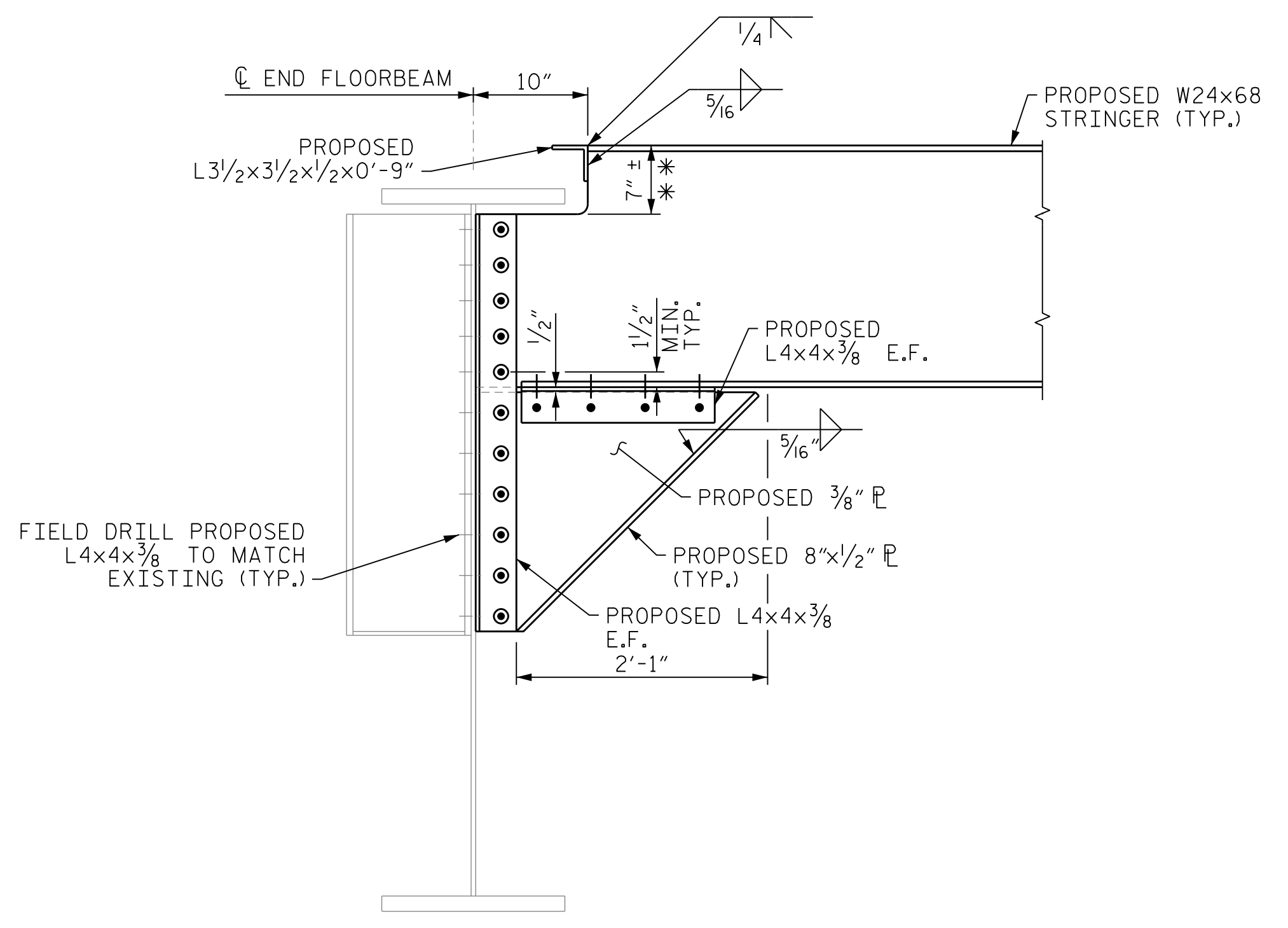
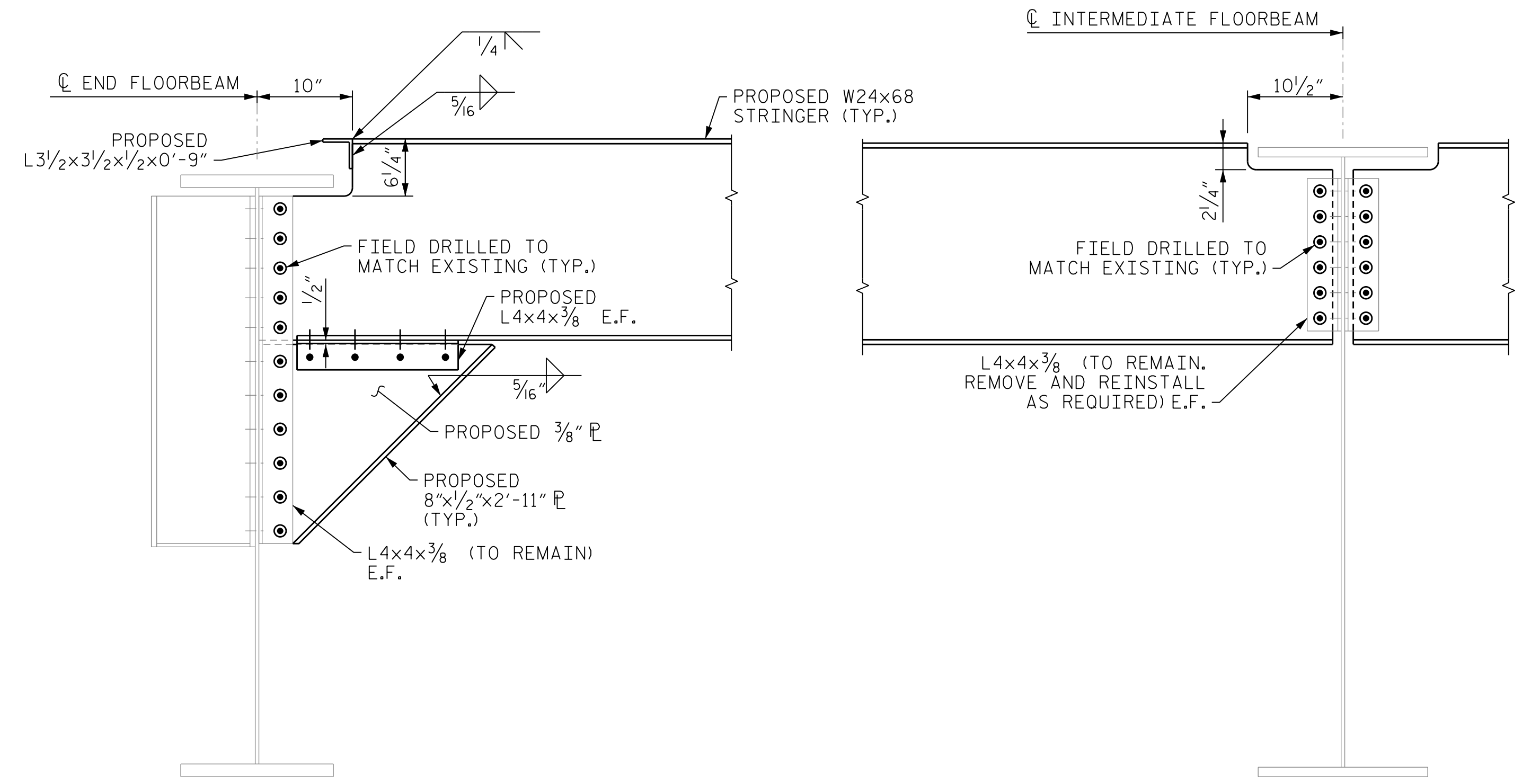


EXISTING STRINGER S1 AND S14 END DETAILS



PROPOSED STRINGER S14 AT FBO

**FIELD VERIFY THIS DIMENSION AS THIS DIMENSION IS APPROXIMATED ASSUMING THAT THE LIFT SPAN FINGER JOINT WILL NEED TO BE RAISED 3/4" ± AT EACH SOUTHWEST END STRINGER LOCATION (S8-S14). (FIELD DRILLED BOLTS THROUGH STRINGER TOP FLANGE NOT SHOWN IN THIS VIEW.)



PROPOSED STRINGER S1 AND S14 END DETAILS

(TYPICAL UNLESS NOTED OTHERWISE.) (FIELD DRILLED BOLTS THROUGH STRINGER TOP FLANGE NOT SHOWN IN THIS VIEW.)

BOLT LEGEND:

- EXISTING BOLT
- NEW BOLT IN EXISTING HOLE OR IN HOLE FIELD DRILLED TO MATCH EXISTING HOLE
- NEW BOLT IN NEW HOLE

NOTES:

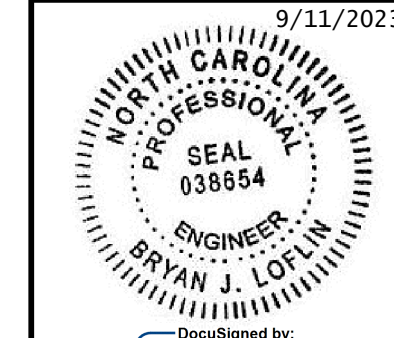
ALL BOLTS ARE 7/8" DIAMETER ASTM F3125 GRADE A325 GALVANIZED HIGH STRENGTH BOLTS UNLESS OTHERWISE SHOWN.
 * FIELD VERIFY LOCATION OF EXISTING STRINGERS BEFORE SUBMITTING SHOP DRAWINGS.
 ANY BOLTS LOOSENED FROM ANY CONNECTION DURING CONSTRUCTION SHALL BE REPLACED WITH NEW BOLTS TIGHTENED IN ACCORDANCE WITH THE STANDARD SPECIFICATIONS.
 THE CONTRACTOR'S ATTENTION IS CALLED TO THE FACT THAT A FEW OF THE EXISTING STRINGER CONNECTIONS AT THE END FLOORBEAMS CONTAIN RIVETS.
 SEE OPEN GRID DECK DRAWINGS FOR STRINGER TO DECK CONNECTION DETAILS.

PROJECT NO. 15BPR.102.3
 NEW HANOVER COUNTY
 BRIDGE NO. 640013

SHEET 1 OF 4

STATE OF NORTH CAROLINA
 DEPARTMENT OF TRANSPORTATION
 RALEIGH

**STRUCTURAL STEEL
 END STRINGERS**



MODJESKI and MASTERS
 Experience great bridges.

333 FAYETTEVILLE STREET, SUITE 500
 RALEIGH, NC 27601
 NC LICENSE NO. C-2979

**DOCUMENT NOT CONSIDERED FINAL
 UNLESS ALL SIGNATURES COMPLETED**

REVISIONS				SHEET NO.	
NO.	BY:	DATE:	NO.	BY:	DATE:
1			3		
2			4		
					TOTAL SHEETS
					21

DESIGNED BY: <u>C. CORMAN</u>	DATE: <u>AUG 2023</u>
DRAWN BY: <u>R. JOHNSON</u>	DATE: <u>AUG 2023</u>
CHECKED BY: <u>M. NIFONG</u>	DATE: <u>AUG 2023</u>
DESIGN ENGINEER OF RECORD: <u>B. LOFLIN</u>	DATE: <u>SEP 2023</u>

9/11/2023 4:01:02 PM 15BPR.102_SML_S503_14.dgn