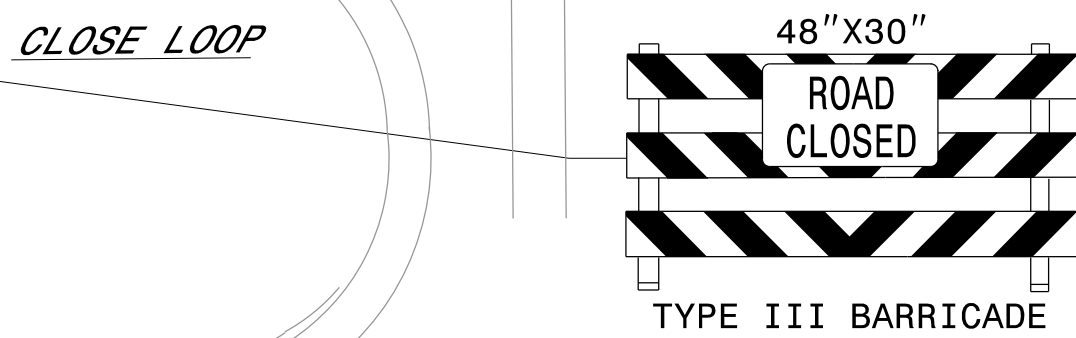
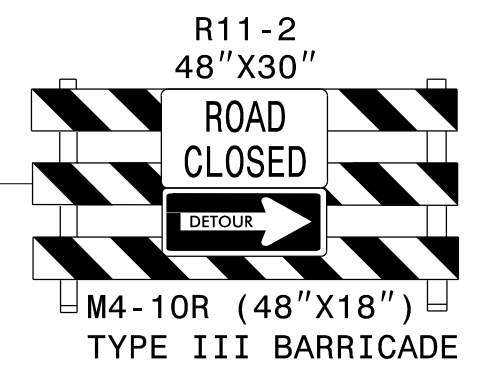


OPTIONAL SIGN
PLACE AS DIRECTED
BY ENGINEER

MESSAGE NO. 1	MESSAGE NO. 2
US 17 76 WEST 421NORTH	DETOUR LEFT ON WRIGHT

CLOSE
LEFT TURN LANE
USING DRUMS

CLOSE
EXIT AREA
USING DRUMS

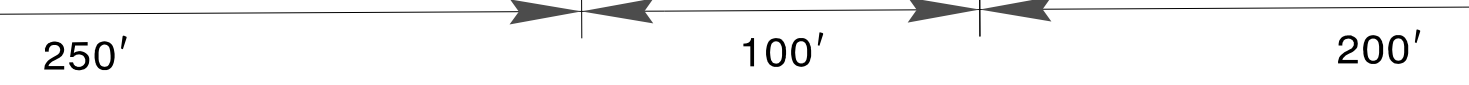


CLOSE
RIGHT TURN LANE
USING DRUMS

PROVIDE
LAW ENFORCEMENT
AT INTERSECTION

CLOSE
LEFT TURN LANE
USING DRUMS

FLASHING ARROW PANEL



REFER TO SHEET TMP-9
FOR ROAD CLOSURE
DETOUR ROUTE

SEE SHEET TMP-5 FOR OFF-SITE
DETOUR SIGNS

11/3/2023
U:\Traffic\Transportation Management Plan\TCP\PLAN SHEETS\15BPR.102.3_TMP.10.WEST_CLOSURE_DETAIL.dgn
angood

Stantec Consulting Services Inc.
801 Jones Franklin Road
Suite 300
Raleigh, NC 27606
Tel. 919.851.6866
Fax. 919.851.7024
www.stantec.com
License No. F-0672

DocuSigned by
J.W. Woolard, Jr. 19862
11/3/2023

DOCUMENT NOT CONSIDERED FINAL
UNLESS ALL SIGNATURES COMPLETED

DIVISION OF HIGHWAYS
STATE OF NORTH CAROLINA
DEPARTMENT OF TRANSPORTATION
WORK ZONE TRAFFIC CONTROL

WESTBOUND
US 17/76 WEST/421 NORTH
ROAD CLOSURE DETAIL