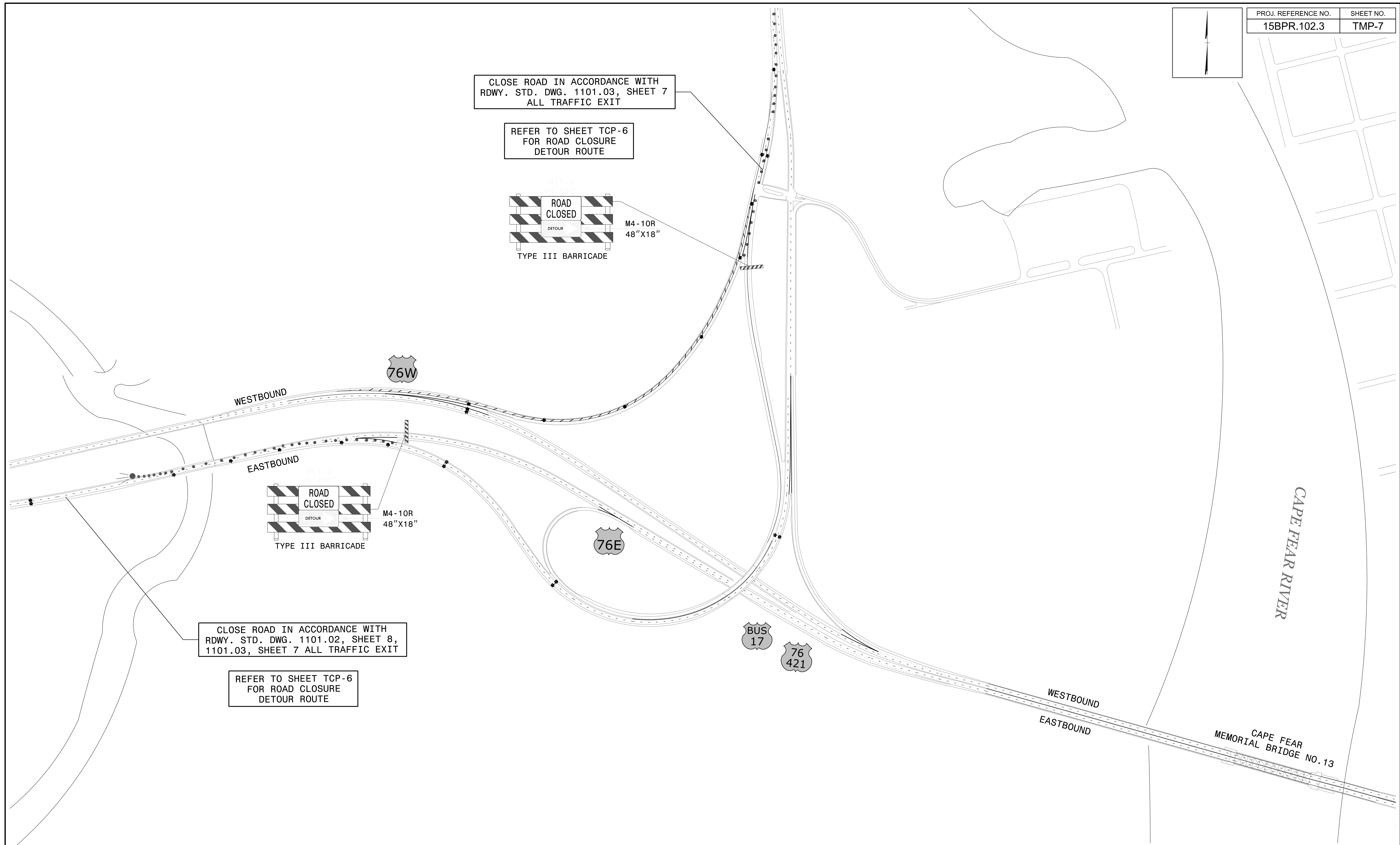
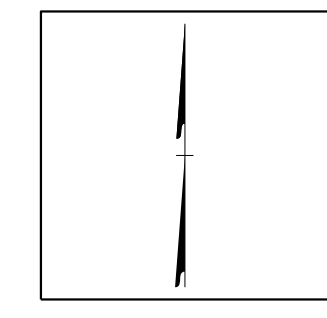
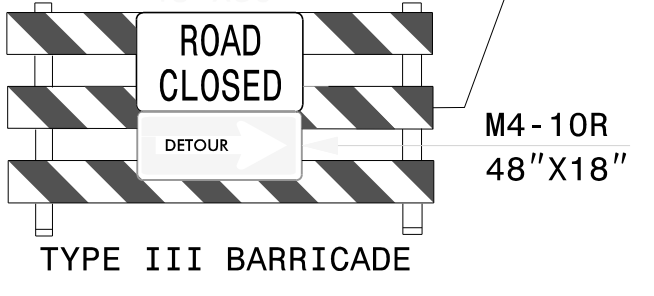
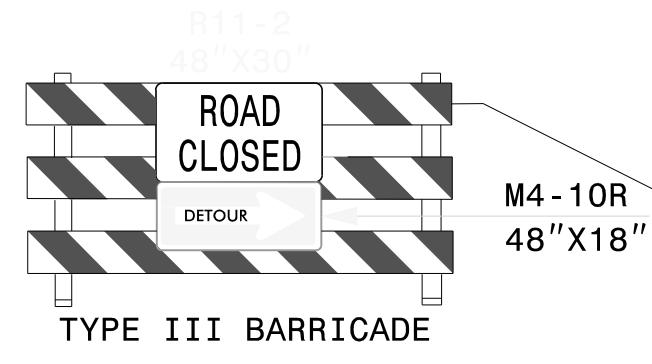


PROJ. REFERENCE NO.	SHEET NO.
15BPR.102.3	TMP-7



CLOSE ROAD IN ACCORDANCE WITH RDWY. STD. DWG. 1101.03, SHEET 7 ALL TRAFFIC EXIT

REFER TO SHEET TCP-6 FOR ROAD CLOSURE DETOUR ROUTE



CLOSE ROAD IN ACCORDANCE WITH RDWY. STD. DWG. 1101.02, SHEET 8, 1101.03, SHEET 7 ALL TRAFFIC EXIT

REFER TO SHEET TCP-6 FOR ROAD CLOSURE DETOUR ROUTE

11/3/2023
L:\Traffic\Transportation Management\Plan\TCP\PLAN SHEETS\15BPR.102.3_TMP_07_EAST_CLOSURE_DETAIL.dgn
angood

Stantec Consulting Services Inc.
801 Jones Franklin Road
Suite 300
Raleigh, NC 27606
Tel. 919.851.6866
Fax. 919.851.7024
www.stantec.com
License No. F-0672

DocuSigned by:
J.W. Woolard, Jr. 19862
11/3/2023

**DOCUMENT NOT CONSIDERED FINAL
UNLESS ALL SIGNATURES COMPLETED**

**EASTBOUND
US 17 BUS/76 EAST/421 SOUTH
ROAD CLOSURE DETAIL**