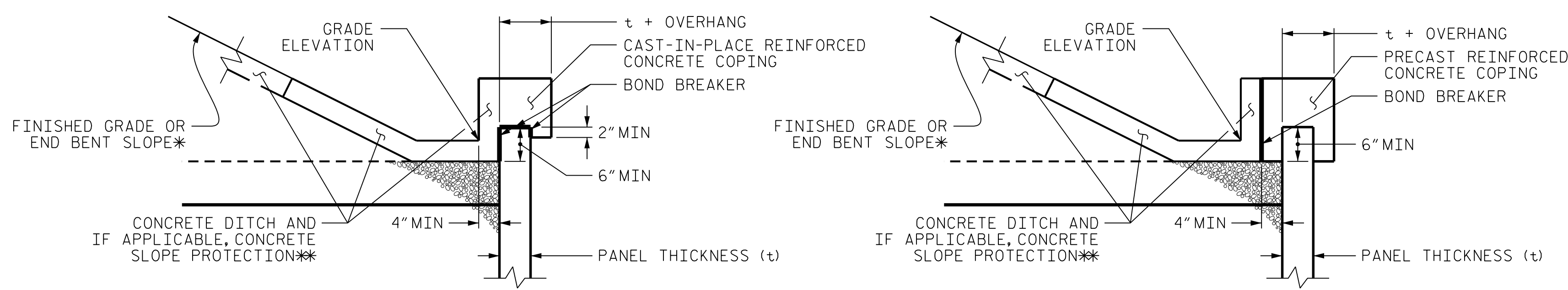


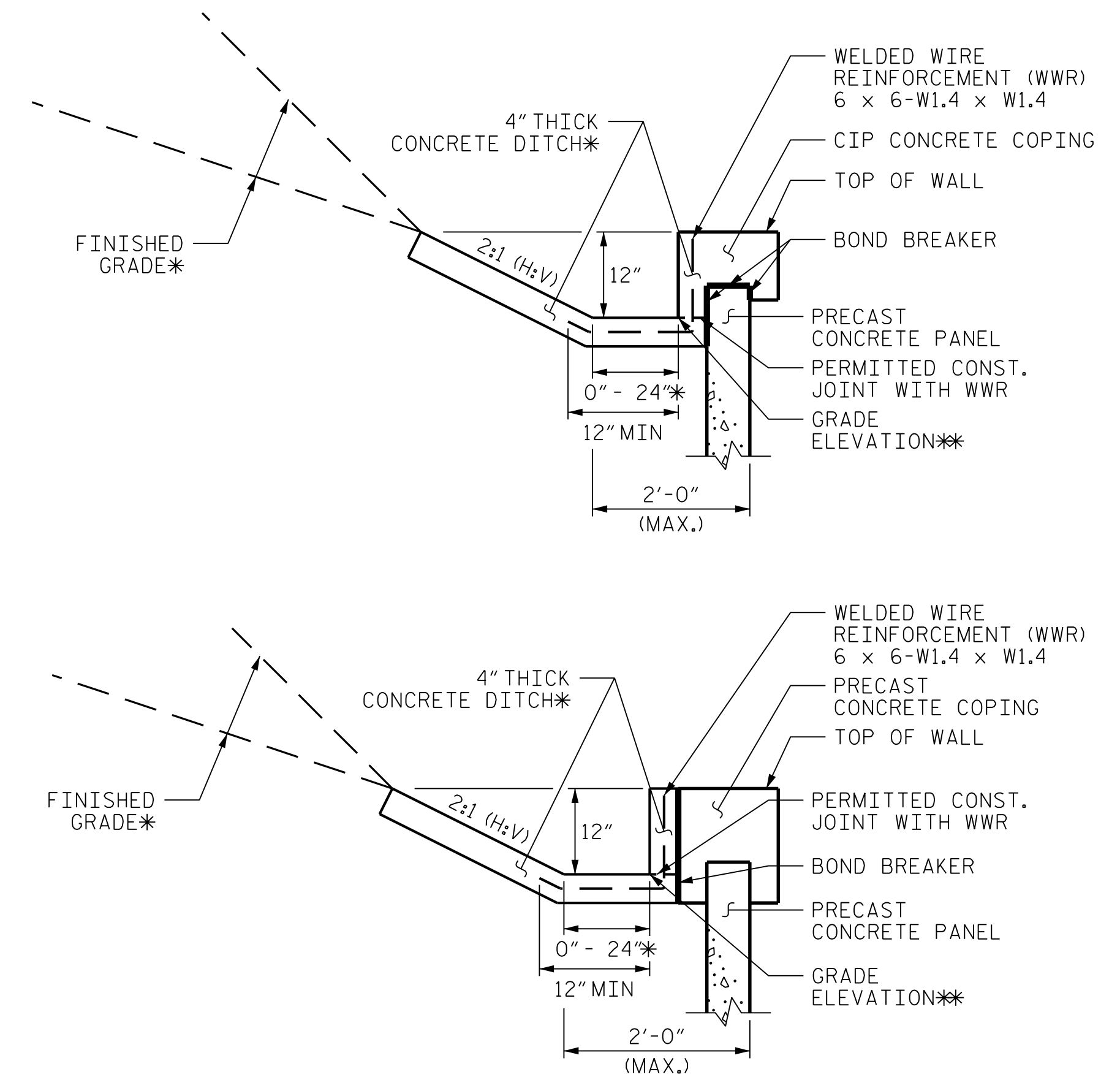
MSE WALL WITH PRECAST PANELS - SECTION A-A

* SEE COPING DETAILS AND PLANS FOR FINISHED GRADE OR END BENT SLOPE DETAILS.
 ** SEE MSE RETAINING WALLS PROVISION AND IF APPLICABLE, MSE WALL NOTES FOR EMBEDMENT AND REINFORCEMENT LENGTH REQUIREMENTS.



COPING DETAILS

* SEE PLANS FOR FINISHED GRADE OR END BENT SLOPE DETAILS.
 ** SEE CONCRETE DITCH BEHIND WALL DETAILS.



MSE WALL WITH PRECAST PANELS

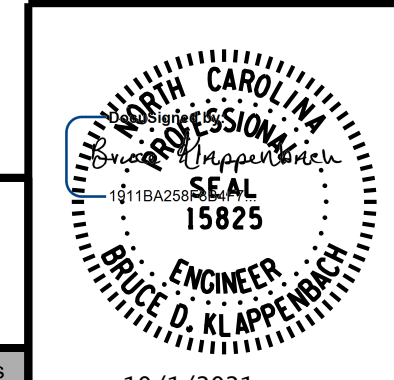
DITCH DETAILS

FOR CONCRETE DITCHES, SEE SECTION 850 OF THE STANDARD SPECIFICATIONS.
 * SEE ROADWAY PLANS FOR CONCRETE DITCH AND FINISHED GRADE DETAILS.
 ** SEE WALL ENVELOPE FOR GRADE ELEVATIONS.

PROJECT NO. I-5972
JOHNSTON COUNTY
 STATION: 36+93.50 -Y1-

SHEET 3 OF 5

STATE OF NORTH CAROLINA
 DEPARTMENT OF TRANSPORTATION
 RALEIGH
MSE RETAINING WALL
 SECTIONS AND
 DETAILS



RK&K
 P: (919) 878-9560
 8601 Six Forks Road, Forum 1 Suite 700
 Raleigh, North Carolina 27615 | NC License No. F-0112
 Engineers | Construction Managers | Planners | Scientists
 www.rk.com
 Responsive People | Creative Solutions

10/1/2021

REVISIONS						SHEET NO.
NO.	BY:	DATE:	NO.	BY:	DATE:	W-3
1			3			TOTAL SHEETS
2			4			5

**DOCUMENT NOT CONSIDERED FINAL
 UNLESS ALL SIGNATURES COMPLETED**

R:\Structures\DN\MSE Walls\FINAL\I5972_SMU_MSE3_500066.dgn

DRAWN BY : B. A. HAAG DATE : JUN 2021
 CHECKED BY : B. D. KLAPPENBACH DATE : JUN 2021
 DESIGN ENGINEER OF RECORD : B. D. KLAPPENBACH DATE : JUN 2021