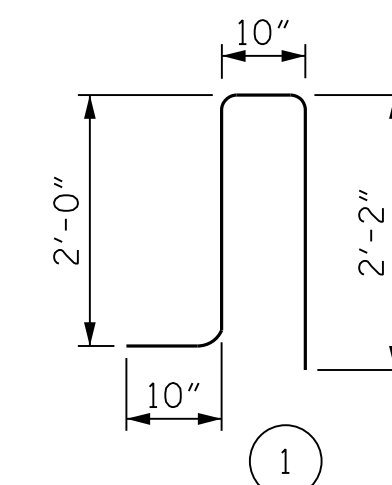


BAR TYPES



ALL BAR DIMENSIONS ARE OUT TO OUT

BILL OF MATERIAL FOR 2 END POSTS (STAGE 2)

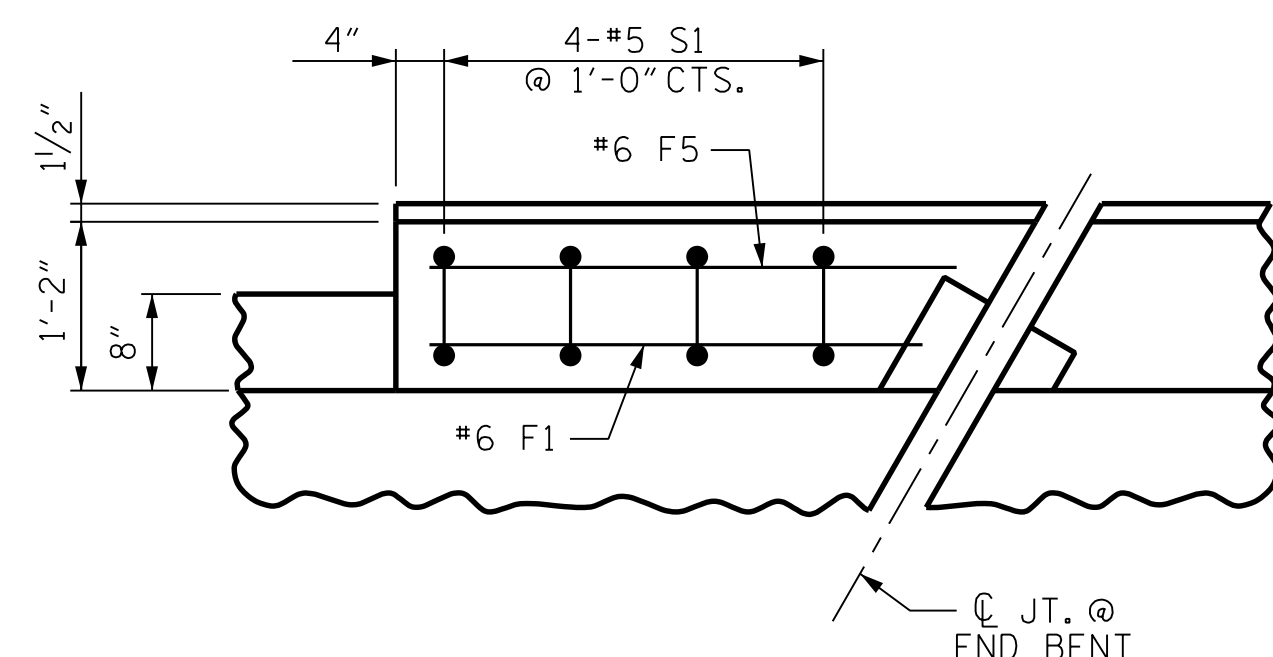
BAR	NO.	SIZE	TYPE	LENGTH	WEIGHT
*E1	4	#7	STR.	2'-6"	20
*E2	4	#7	STR.	2'-11"	24
*E3	4	#7	STR.	3'-5"	28
*E4	4	#7	STR.	3'-10"	31
*E5	4	#7	STR.	4'-4"	35
*F1	4	#6	STR.	3'-5"	21
*F2	2	#6	STR.	2'-11"	4
*F3	2	#6	STR.	1'-9"	3
*F4	2	#6	STR.	3'-3"	5
*F5	4	#6	STR.	3'-11"	24
*F6	2	#6	STR.	3'-5"	10
*F7	2	#6	STR.	2'-4"	7
*F8	2	#6	STR.	3'-9"	11
*S1	8	#5	1	5'-10"	49
* EPOXY COATED REINFORCING STEEL				LBS.	272
CLASS AA CONCRETE				CU.YDS.	1.3
1'-2" x 2'-6" CONCRETE PARAPET				LIN. FT.	7.50

NOTES

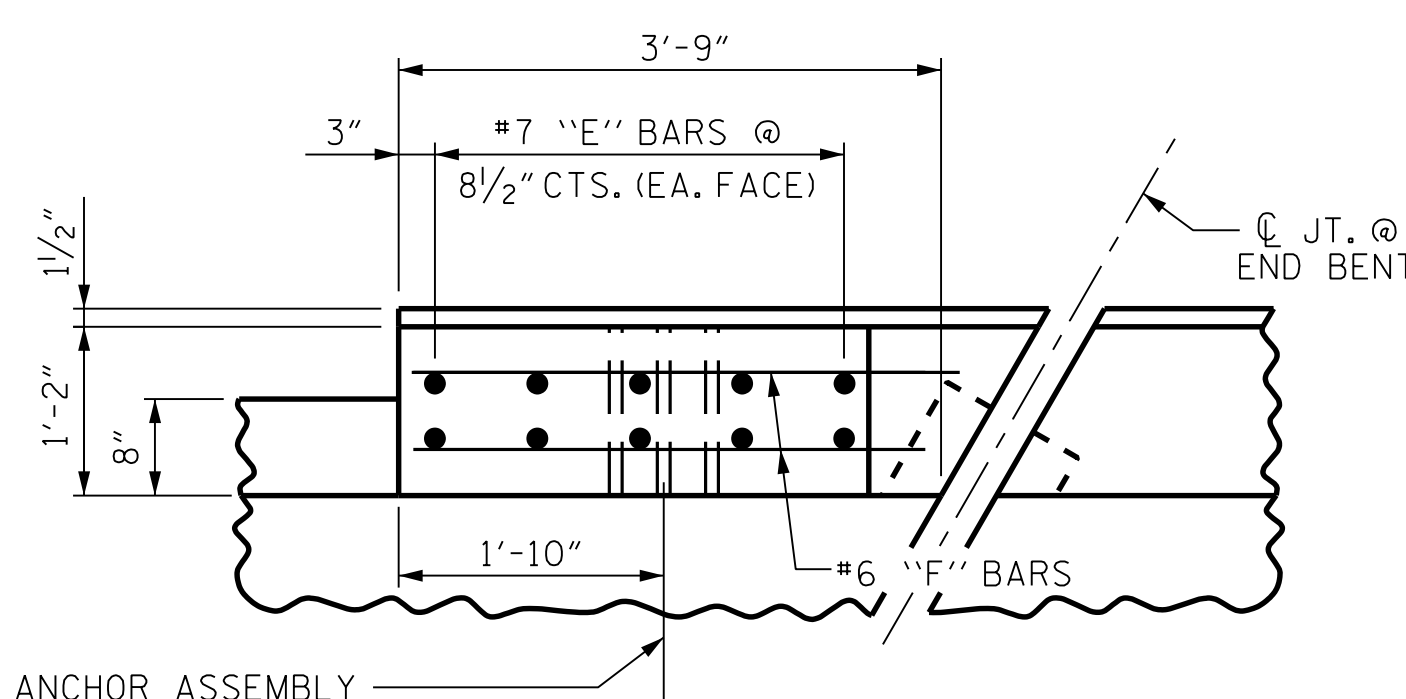
THE COST OF THE END POST ON THE APPROACH SLAB SHALL BE INCLUDED IN THE LINEAR FOOT CONTRACT PRICE BID FOR "1'-2" X 2'-6" CONCRETE PARAPET".

THE END POST ON EACH APPROACH SLAB SHALL NOT BE CAST UNTIL ALL APPROACH SLAB CONCRETE HAS BEEN CAST AND HAS REACHED A MINIMUM COMPRESSIVE STRENGTH OF 3,000 PSI.

ALL REINFORCING STEEL IN END POSTS SHALL BE EPOXY COATED.

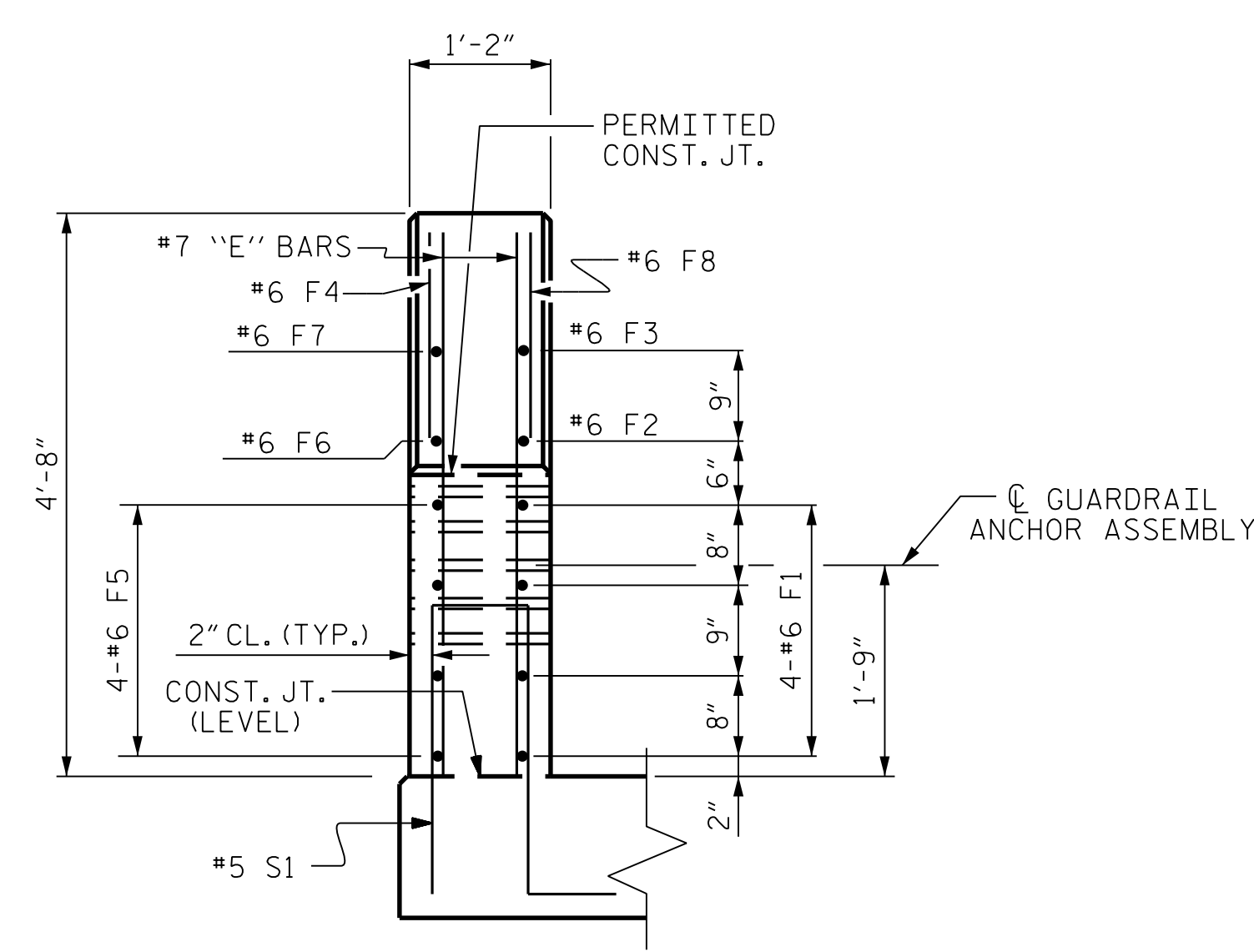


PLAN OF PARAPET

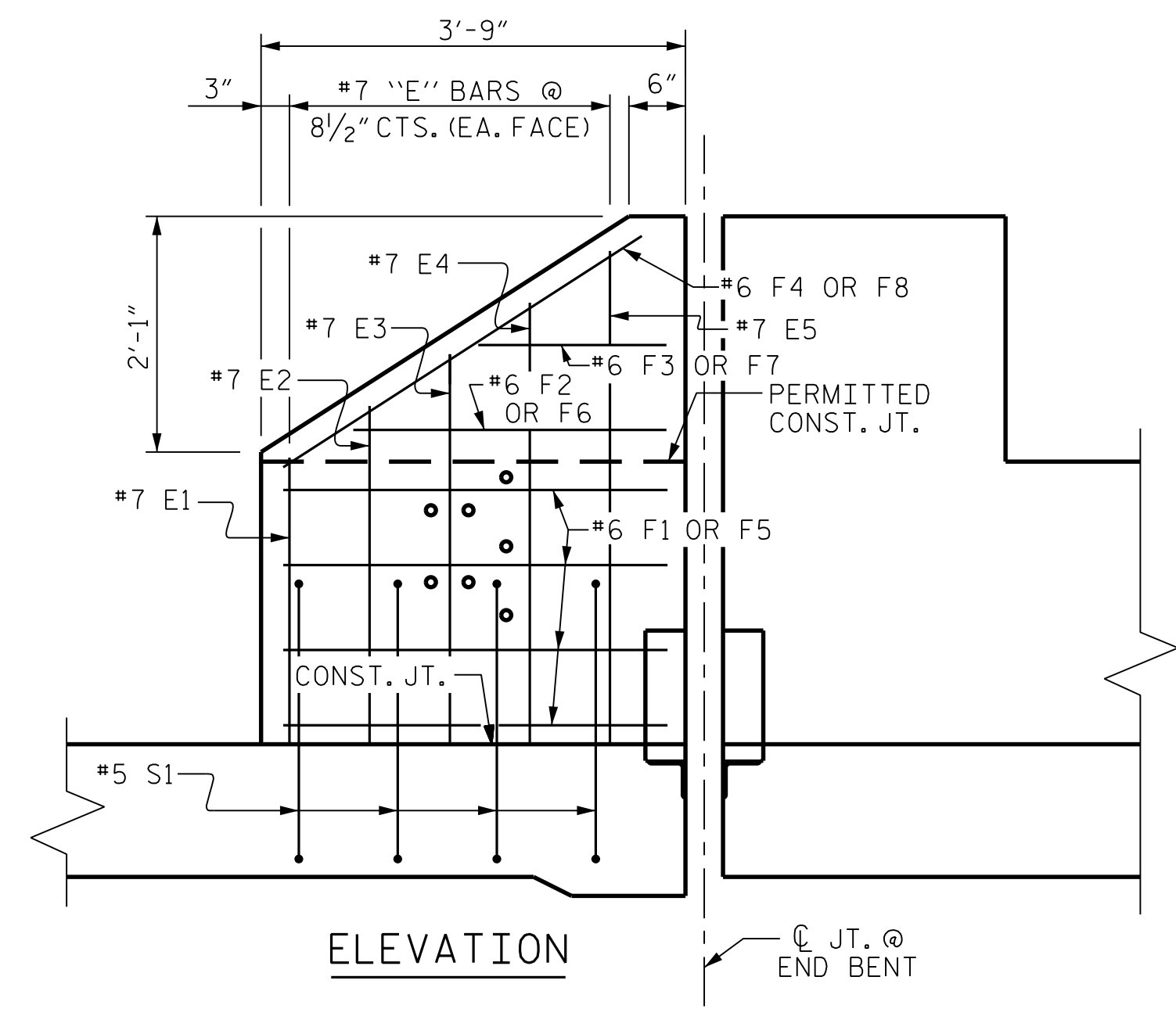


PLAN OF END POST

CL. GUARDRAIL ANCHOR ASSEMBLY SEE "GUARDRAIL ANCHORAGE DETAILS FOR METAL RAILS" SHEET (TYP.)



END VIEW



ELEVATION

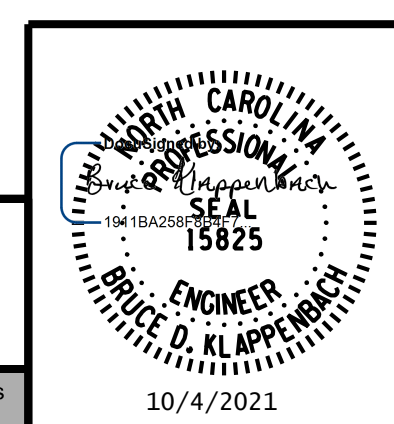
END POST FOR TWO BAR RAIL

LOCATED ON LEFT SIDE (STAGE 2) ONLY.

PROJECT NO. I-5972  
JOHNSTON COUNTY  
STATION: 36+93.50 -Y1-

SHEET 2 OF 3

STATE OF NORTH CAROLINA  
DEPARTMENT OF TRANSPORTATION  
RALEIGH  
STANDARD  
BRIDGE APPROACH  
SLAB DETAILS  
END POST  
LEFT SIDE - STAGE 2



REVISIONS						SHEET NO.
NO.	BY:	DATE:	NO.	BY:	DATE:	S-53
1			3			TOTAL SHEETS
2			4			54

DOCUMENT NOT CONSIDERED FINAL UNLESS ALL SIGNATURES COMPLETED

10/4/2021 R:\Structures\DN\BR\_500066\Final\I5972\_SMU\_AS2\_500066.dgn

DRAWN BY : B. A. HAAG DATE : JUN 2021  
CHECKED BY : B. D. KLAPPENBACH DATE : JUN 2021  
DESIGN ENGINEER OF RECORD : B. D. KLAPPENBACH DATE : JUN 2021