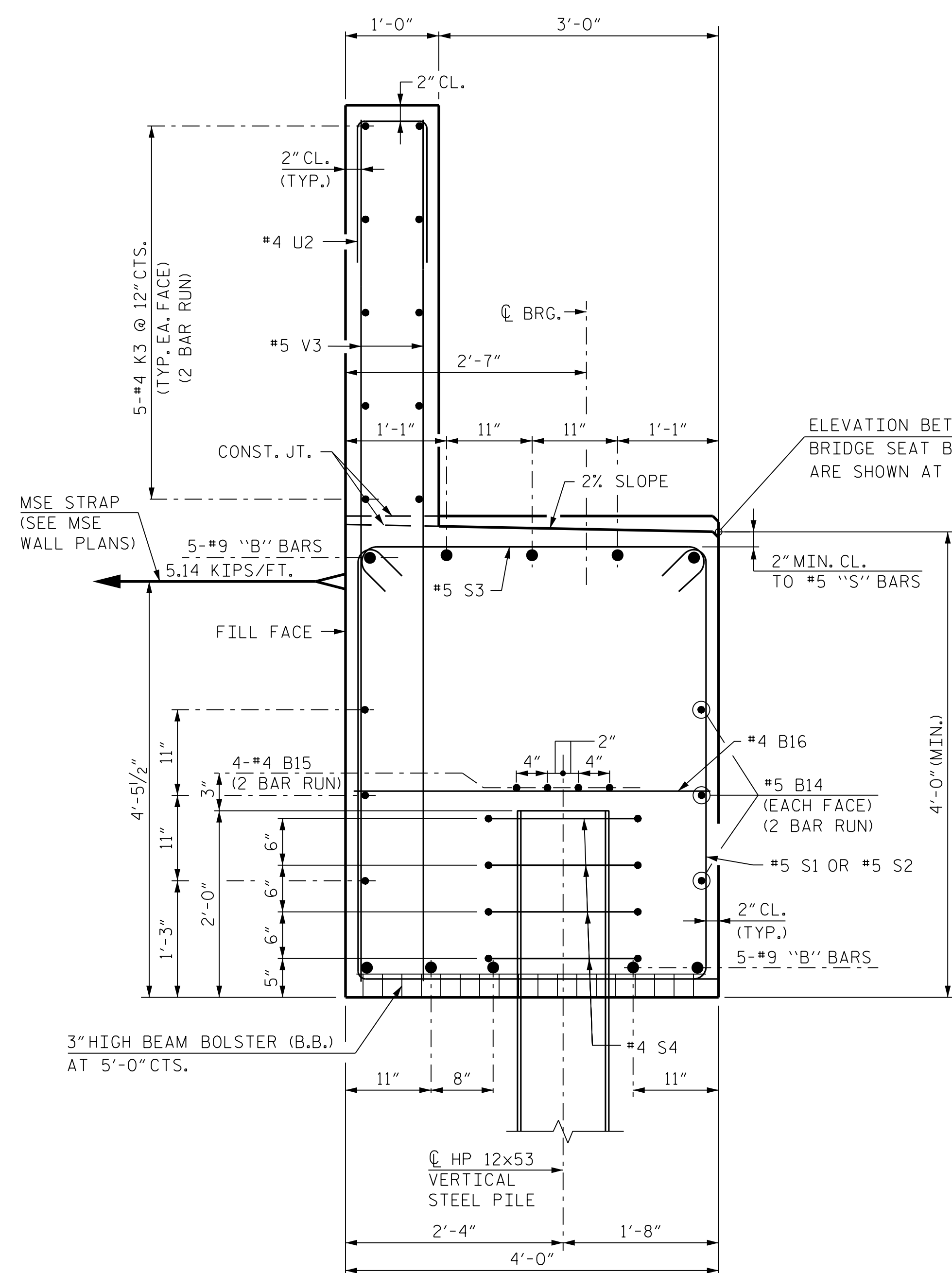
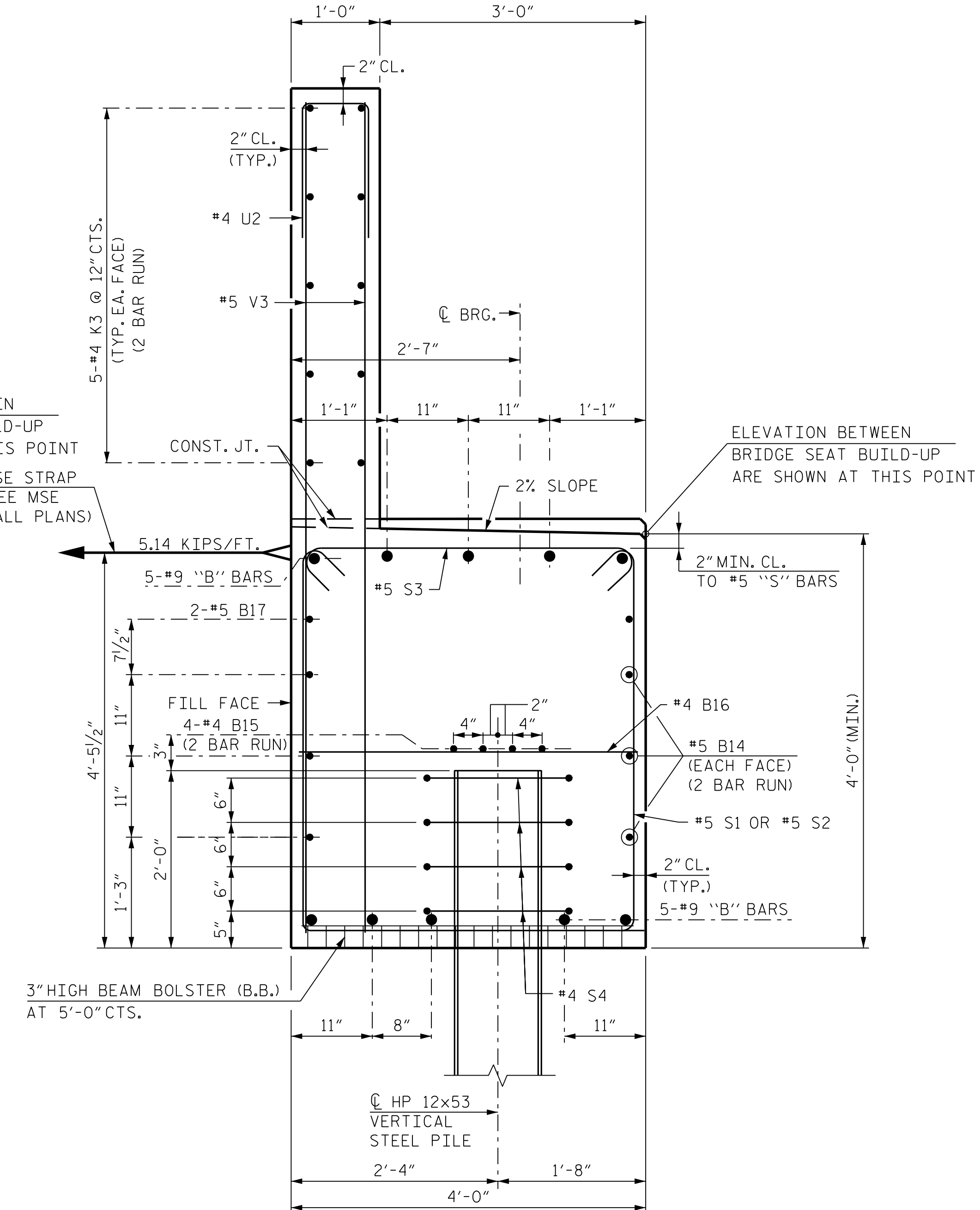


R:\Structures\DON\BR\_500066\Final\I5972\_SMU\_E2\_2C\_500066.dgn



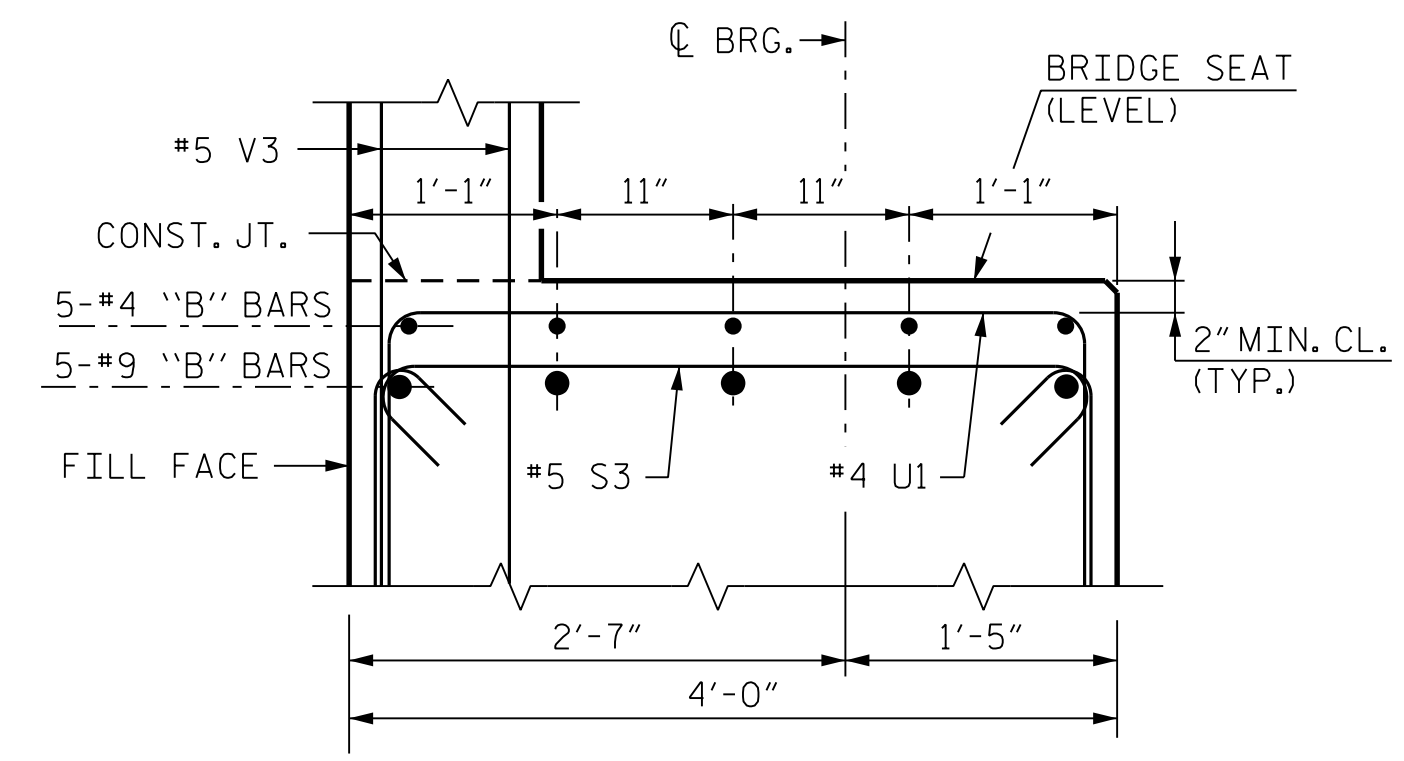
**SECTION A-A**

(DIMENSIONS SHOWN ARE NORMAL TO THE END BENT)

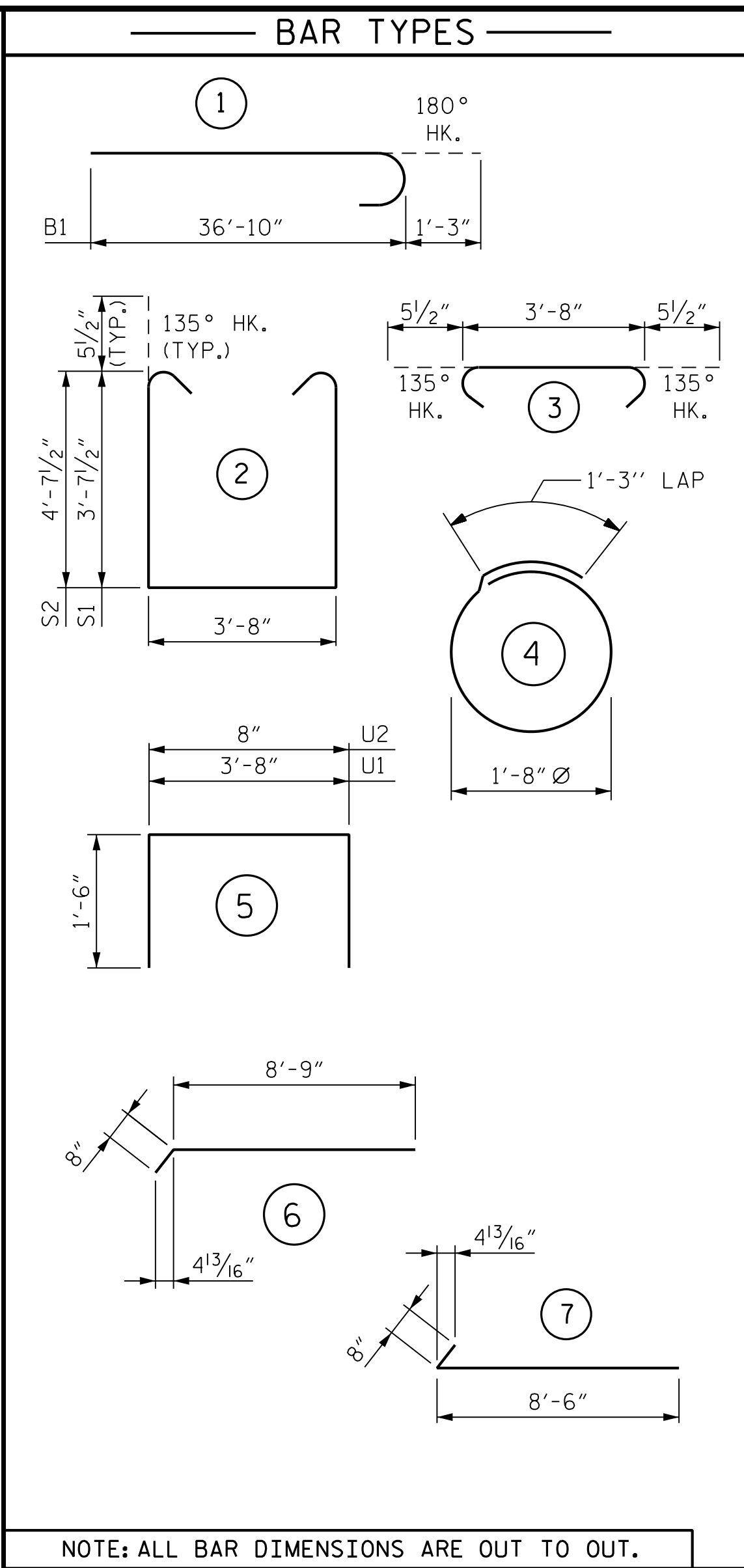


**SECTION C-C**

(DIMENSIONS SHOWN ARE NORMAL TO THE END BENT)



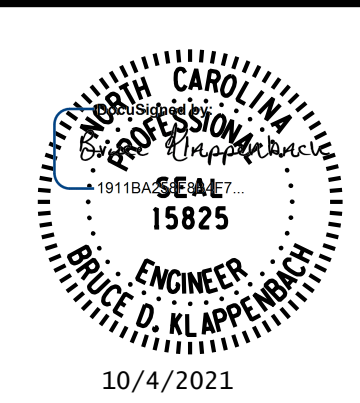
**SECTION B-B**



BILL OF MATERIAL					
END BENT 2 - STAGE 2					
BAR	NO.	SIZE	TYPE	LENGTH	WEIGHT
B1	5	#9		38'-1"	647
B9	5	#9	STR.	34'-2"	581
B10	5	#9		49'-6"	842
B11	5	#9	STR.	26'-9"	455
B12	15	#4	STR.	10'-6"	105
B13	5	#4	STR.	6'-4"	21
B14	12	#5	STR.	35'-2"	440
B15	8	#4	STR.	34'-8"	185
B16	16	#4	STR.	3'-8"	39
B17	2	#5	STR.	23'-6"	49
H1	20	#4		9'-2"	122
K3	20	#4	STR.	35'-4"	472
K4	2	#4	STR.	2'-11"	4
K5	2	#4	STR.	3'-2"	4
S1	67	#5		11'-10"	827
S2	51	#5		13'-10"	736
S3	118	#5		4'-7"	564
S4	32	#4		6'-6"	139
U1	42	#4		6'-8"	187
U2	65	#4		3'-8"	159
V3	130	#5	STR.	7'-11"	1,073
V4	26	#5	STR.	9'-7"	260
REINFORCING STEEL					7,911 LBS.
CLASS "A" CONCRETE					
POUR 1 (CAP AND LOWER WINGS)					45.8 C.Y.
POUR 2 (BACKWALL & UPPER WINGS)					13.5 C.Y.
TOTAL					59.3 C.Y.
HP 12x53 STEEL PILES					
NO.					7
L.F.					385
PILE DRIVING EQUIPMENT SETUP FOR HP 12x53 STEEL PILES					7 EA.

DRAWN BY : B. A. HAAG DATE : JUN 2021  
 CHECKED BY : D. M. RAGAN DATE : JUN 2021  
 DESIGN ENGINEER OF RECORD : B. D. KLAPPENBACH DATE : JUN 2021

**RK&K**  
 P: (919) 878-9560  
 8601 Six Forks Road, Forum 1 Suite 700  
 Raleigh, North Carolina 27615 | NC License No. F-0112  
 Engineers | Construction Managers | Planners | Scientists  
 www.rkk.com  
 Responsive People | Creative Solutions



PROJECT NO. I-5972  
JOHNSTON COUNTY  
 STATION: 36+93.50 -Y1-

SHEET 3 OF 3

STATE OF NORTH CAROLINA  
 DEPARTMENT OF TRANSPORTATION  
 RALEIGH  
**SUBSTRUCTURE**  
 END BENT 2  
 MISCELLANEOUS DETAILS  
 AND BILL OF MATERIAL  
 STAGE 2

REVISIONS						SHEET NO.
NO.	BY:	DATE:	NO.	BY:	DATE:	S-50
1			3			TOTAL SHEETS
2			4			54

**DOCUMENT NOT CONSIDERED FINAL UNLESS ALL SIGNATURES COMPLETED**