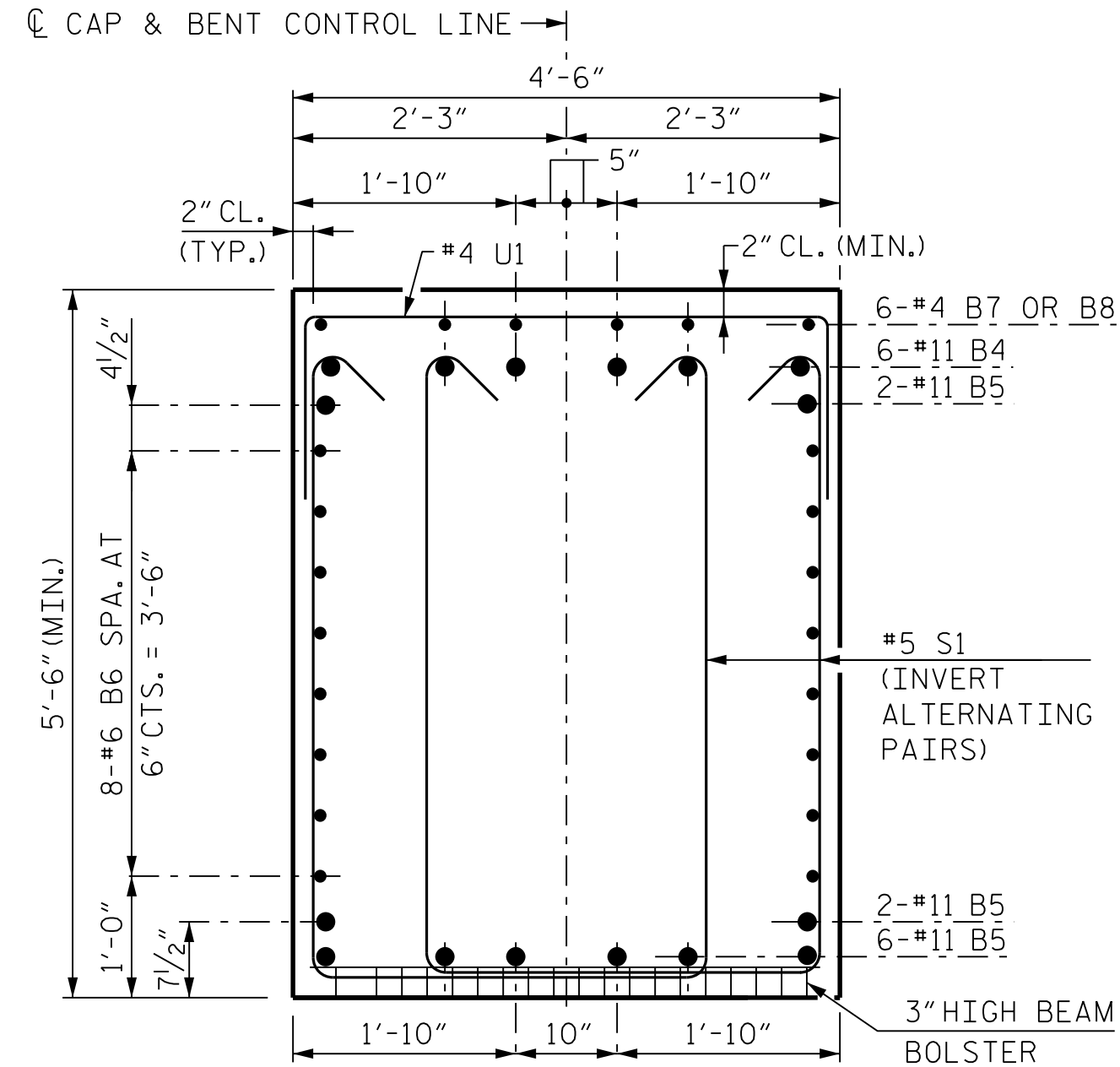
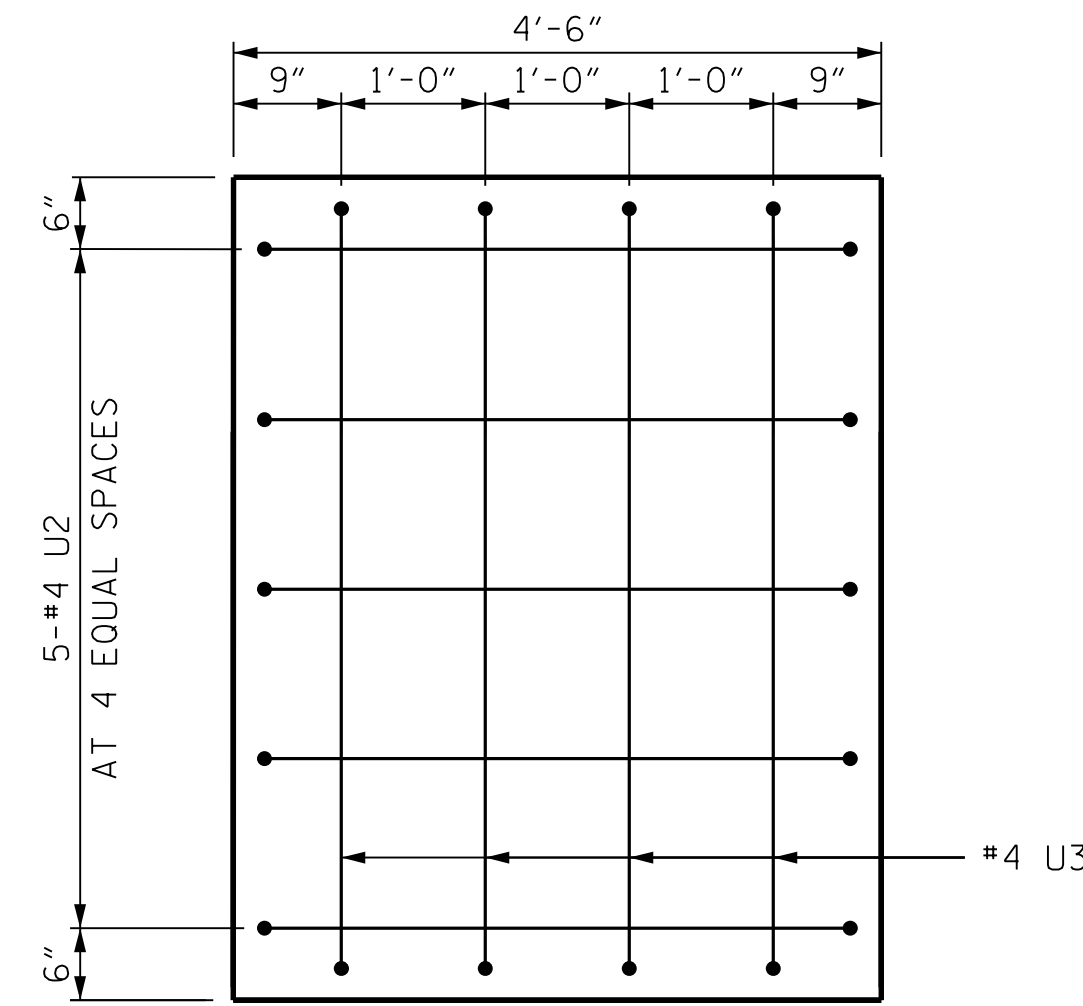


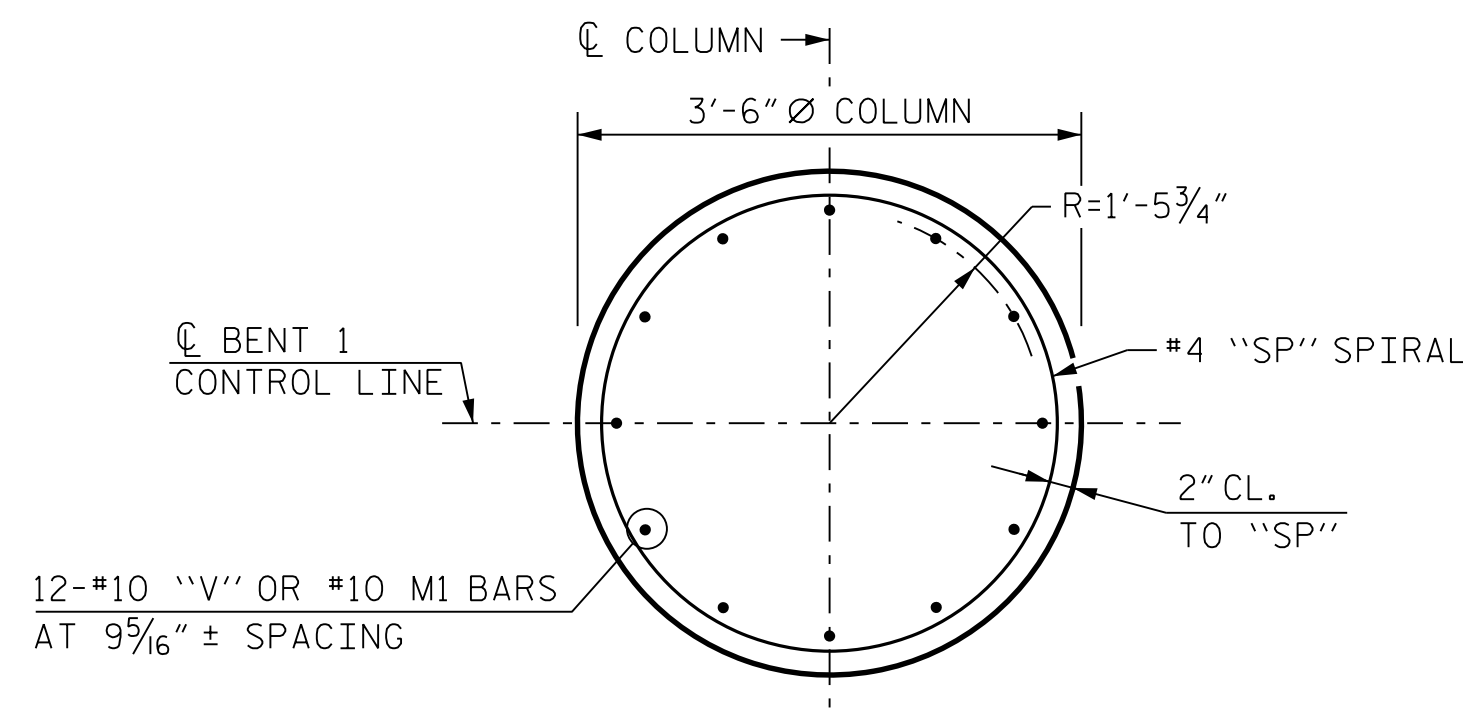
SECTION A-A



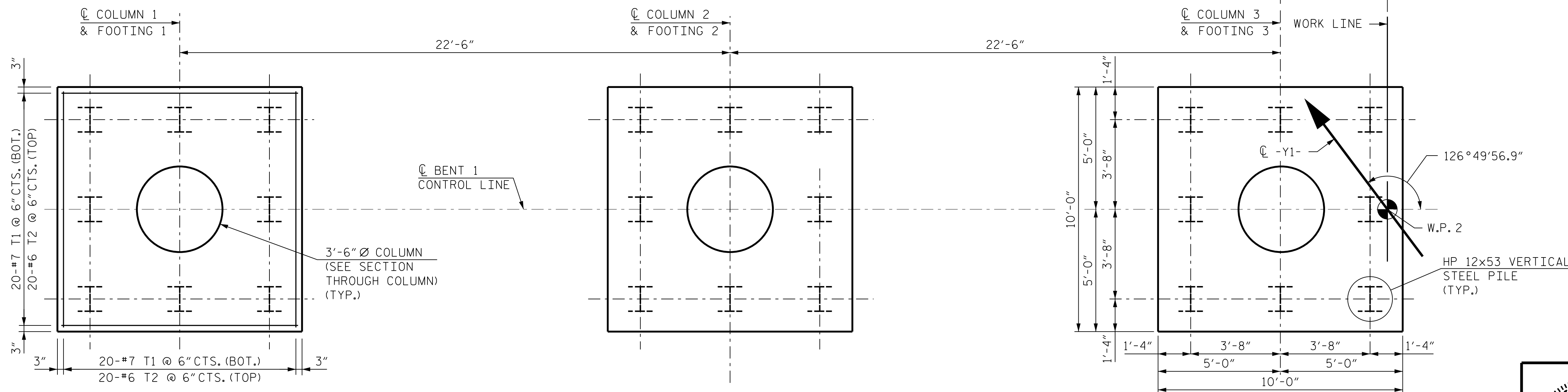
SECTION B-B



END OF CAP DETAIL

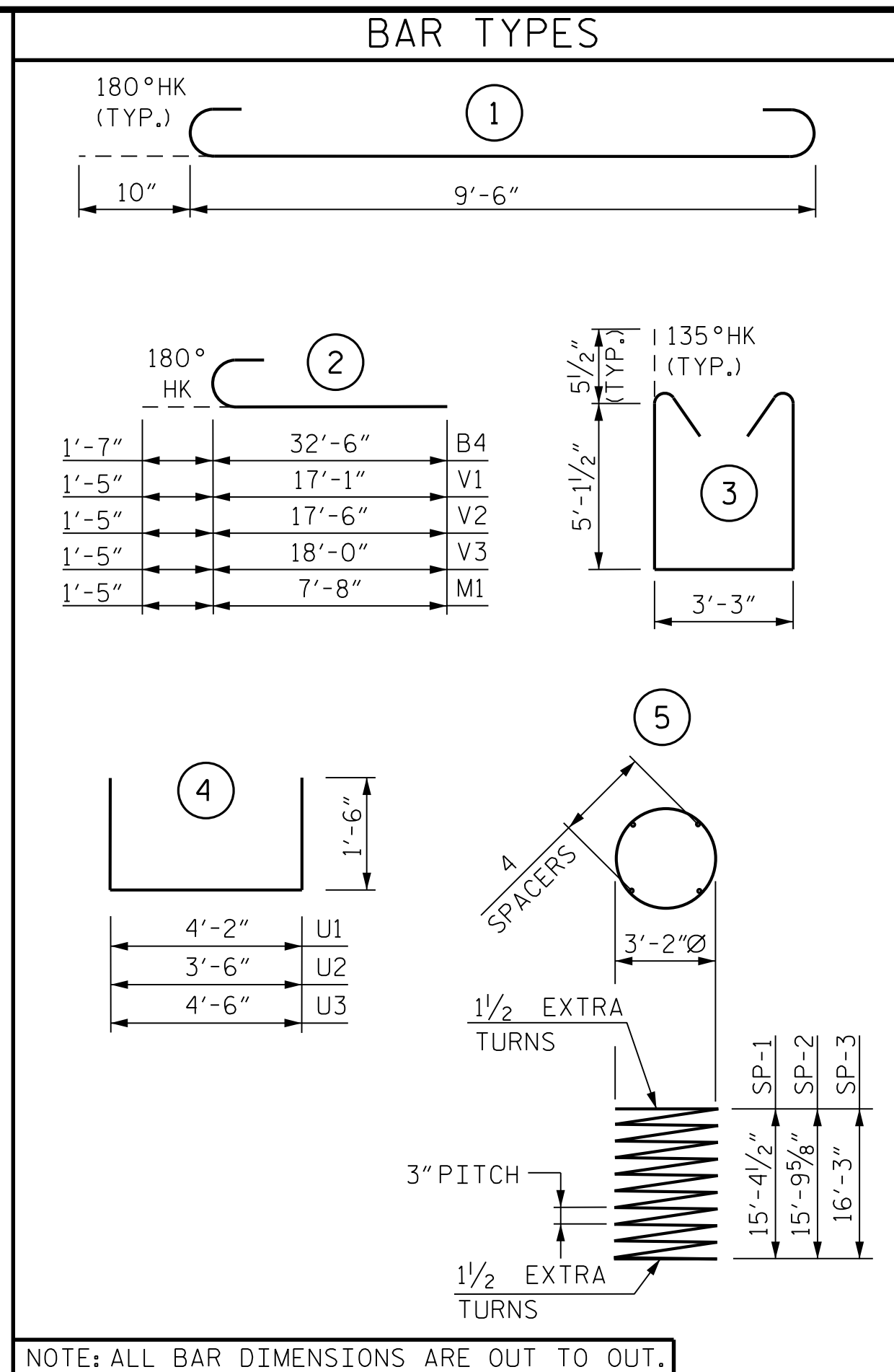


SECTION THROUGH COLUMN



PLAN OF FOOTINGS

(DIMENSIONS AND REINFORCING STEEL ARE TYPICAL FOR EACH FOOTING)



NOTE: ALL BAR DIMENSIONS ARE OUT TO OUT.

BILL OF MATERIAL

BENT 1 - STAGE 2					
BAR	NO.	SIZE	TYPE	LENGTH	WEIGHT
B4	12	#11		34'-1"	2,173
B5	10	#11	STR.	58'-5"	3,104
B6	16	#6	STR.	58'-5"	1,404
B7	30	#4	STR.	6'-0"	120
B8	6	#4	STR.	4'-6"	18
M1	36	#10		9'-1"	1,407
S1	216	#5		14'-6"	3,267
T1	120	#7		11'-2"	2,739
T2	120	#6	STR.	9'-6"	1,712
U1	59	#4		7'-2"	282
U2	10	#4		6'-6"	43
U3	8	#4		7'-6"	40
V1	12	#10		18'-6"	955
V2	12	#10		18'-11"	977
V3	12	#10		19'-5"	1,003

REINFORCING STEEL	19,244	LBS.
SP-1	1	* 5 633'-6" 423
SP-2	1	* 5 650'-3" 434
SP-3	1	* 5 667'-10" 446

SPIRAL COLUMN REINFORCING STEEL	1,303	LBS.
---------------------------------	-------	------

* "SP" SPIRAL REINFORCING STEEL SHALL BE W20 OR D-20 COLD DRAWN WIRE OR #4 PLAIN OR DEFORMED BAR

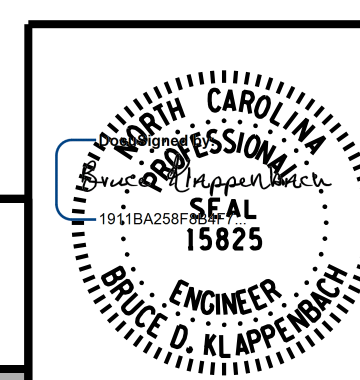
CLASS "A" CONCRETE		
POUR 1 (FOOTINGS)		47.2 C.Y.
POUR 2 (COLUMNS)		16.6 C.Y.
POUR 3 (CAP)		55.9 C.Y.
TOTAL		119.7 C.Y.

HP 12x53 STEEL PILES	
NO.	24
L.F.	960
PILE DRIVING EQUIPMENT SETUP FOR HP 12x53 STEEL PILES	24 EA.

PROJECT NO. I-5972
 JOHNSTON COUNTY
 STATION: 36+93.50 -Y1-

SHEET 2 OF 2

STATE OF NORTH CAROLINA
 DEPARTMENT OF TRANSPORTATION
 RALEIGH
SUBSTRUCTURE
 BENT 1
 DETAILS AND
 BILL OF MATERIAL
 STAGE 2



RK&K
 P: (919) 878-9560
 8601 Six Forks Road, Forum 1 Suite 700
 Raleigh, North Carolina 27615 | NC License No. F-0112
 Engineers | Construction Managers | Planners | Scientists
 www.rkk.com

10/4/2021
DOCUMENT NOT CONSIDERED FINAL UNLESS ALL SIGNATURES COMPLETED

REVISIONS					
NO.	BY:	DATE:	NO.	BY:	DATE:
1			3		
2			4		

SHEET NO.	S-44
TOTAL SHEETS	54

10/4/2021 R:\Structures\GON\BR_500066\Final\I5972_SMU_B1_2B_500066.dgn
 bhaag

DRAWN BY : B. A. HAAG DATE : JUN 2021
 CHECKED BY : D. M. RAGAN DATE : JUN 2021
 DESIGN ENGINEER OF RECORD : B. D. KLAPPENBACH DATE : JUN 2021