

NOTES:

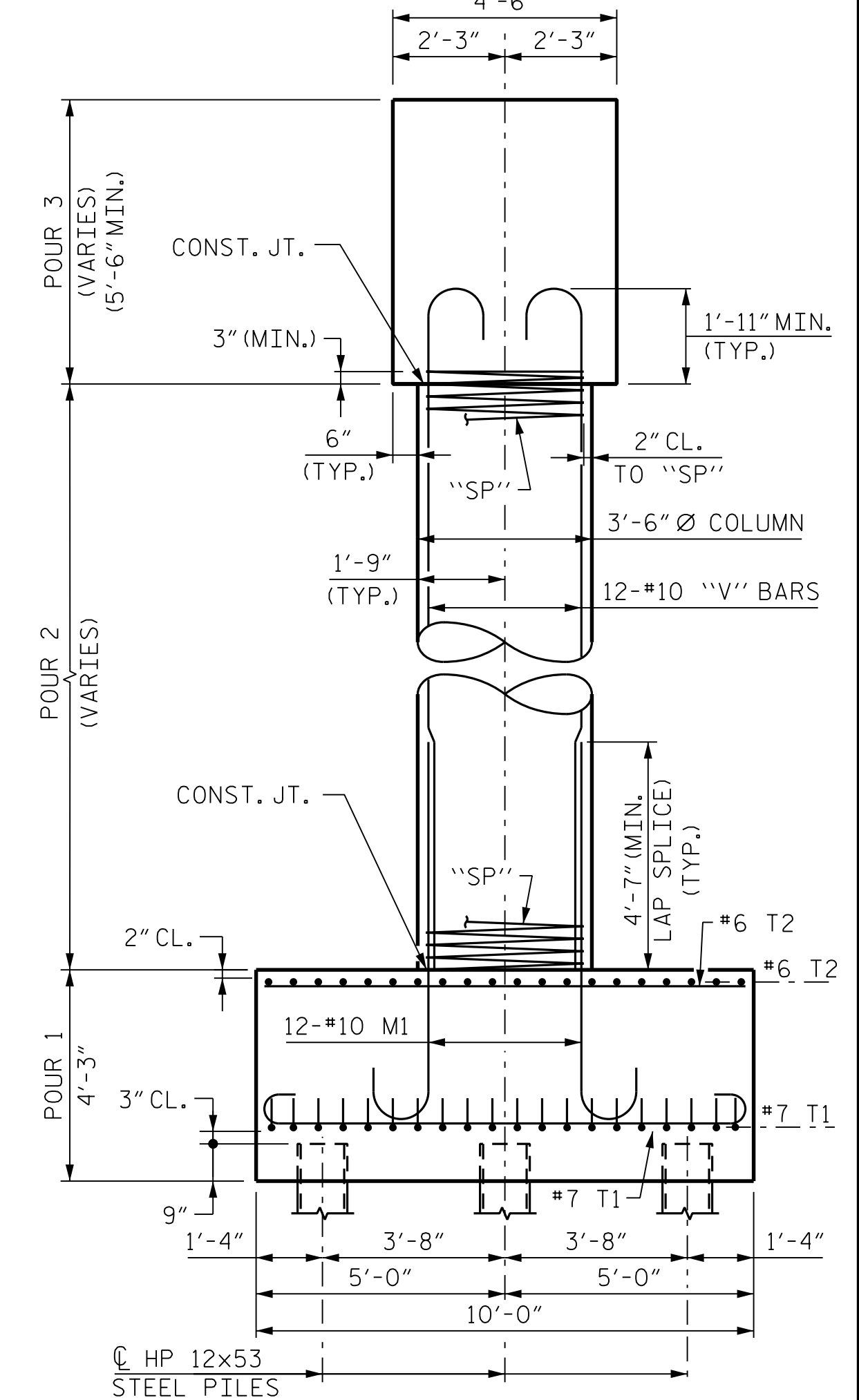
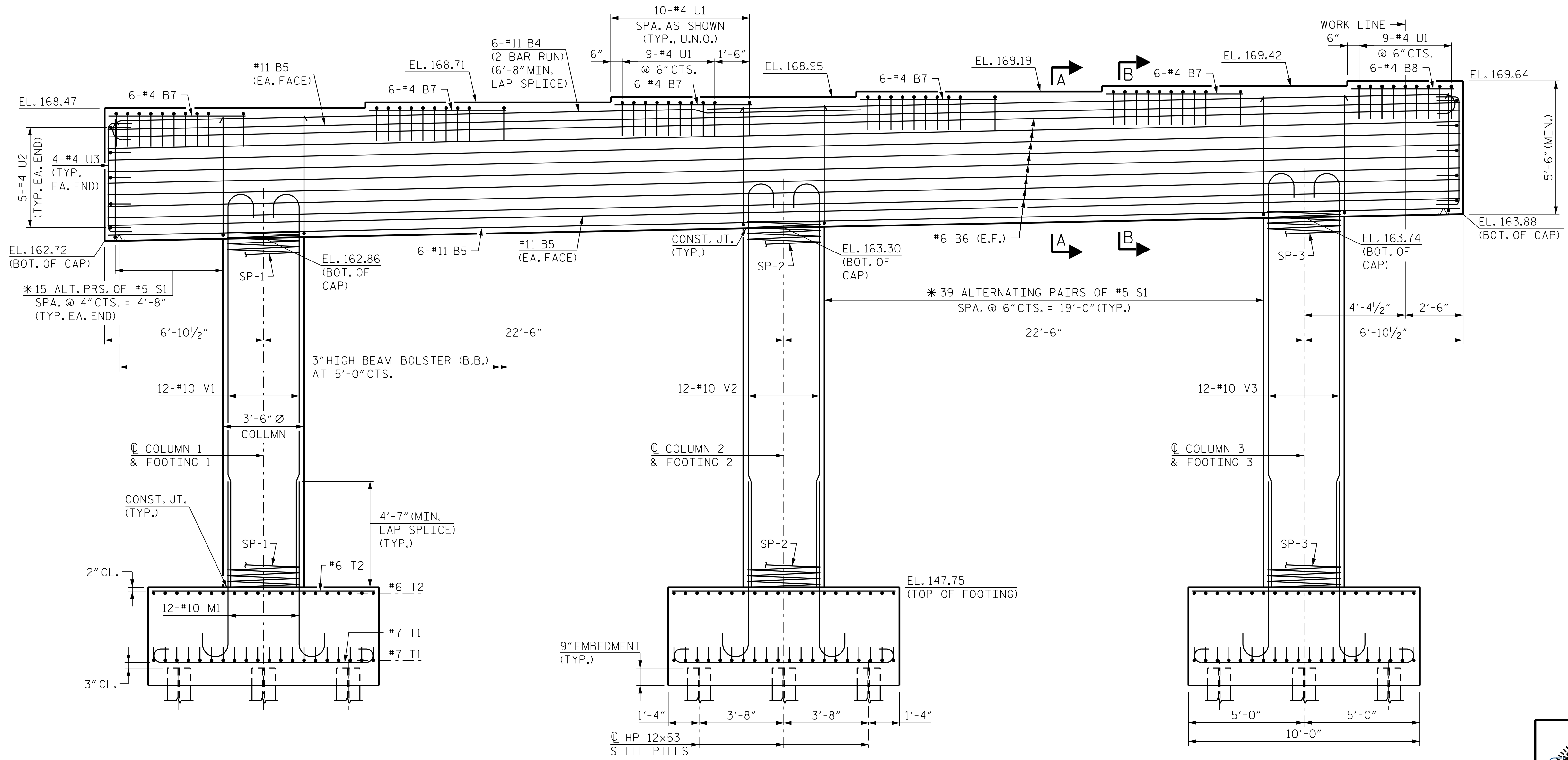
FOR SECTIONS A-A AND B-B, SEE SHEET 2 OF 2.

FOR SECTION THROUGH COLUMN, SEE SHEET 2 OF 2.

HOOKS ON "V" AND "M" BARS MAY BE TURNED AS NECESSARY FOR PLACING REINFORCING STEEL.

STIRRUPS IN CAP MAY BE SHIFTED AS NECESSARY TO CLEAR ANCHOR BOLTS.

FOR PILE SPLICE DETAILS, SEE END BENT 2 STAGE 1 SHEET 3 OF 3.



(DIMENSIONS AND REINFORCING STEEL ARE TYPICAL FOR EACH FOOTING AND COLUMN)

PROJECT NO. I-5972
 JOHNSTON COUNTY
 STATION: 36+93.50 -Y1-

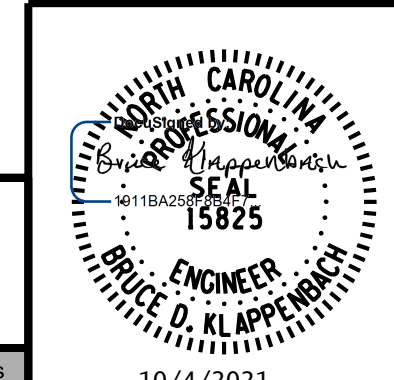
SHEET 1 OF 2

STATE OF NORTH CAROLINA
 DEPARTMENT OF TRANSPORTATION
 RALEIGH

**SUBSTRUCTURE
 BENT 1
 PLAN AND ELEVATION
 STAGE 2**

REVISIONS						SHEET NO.
NO.	BY:	DATE:	NO.	BY:	DATE:	S-43
1			3			TOTAL SHEETS
2			4			54

RK&K
 P: (919) 878-9560
 8601 Six Forks Road, Forum 1 Suite 700
 Raleigh, North Carolina 27615 | NC License No. F-0112
 Engineers | Construction Managers | Planners | Scientists
 www.rkk.com
 Responsive People | Creative Solutions



10/4/2021 R:\Structures\DON\BR_500066\Final\I5972_SMU_B1_2A_500066.dgn
 bhaoq

DRAWN BY : B. A. HAAG DATE : JUN 2021
 CHECKED BY : D. M. RAGAN DATE : JUN 2021
 DESIGN ENGINEER OF RECORD : B. D. KLAPPENBACH DATE : JUN 2021

(DIMENSIONS AND REINFORCING STEEL ARE TYPICAL FOR EACH COLUMN AND FOOTING, UNLESS NOTED OTHERWISE)
 * INVERT ALTERNATE PAIRS OF STIRRUPS