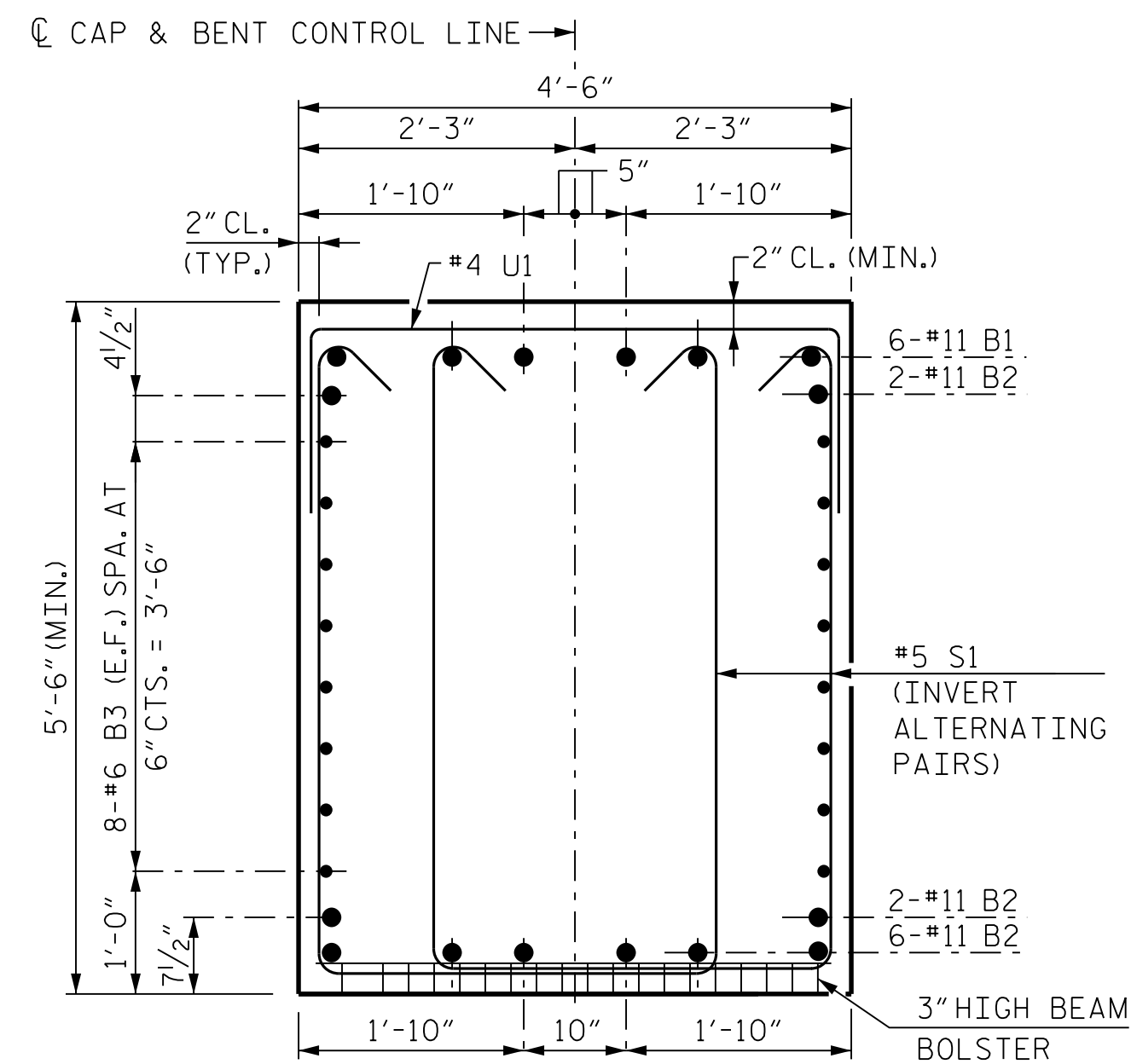
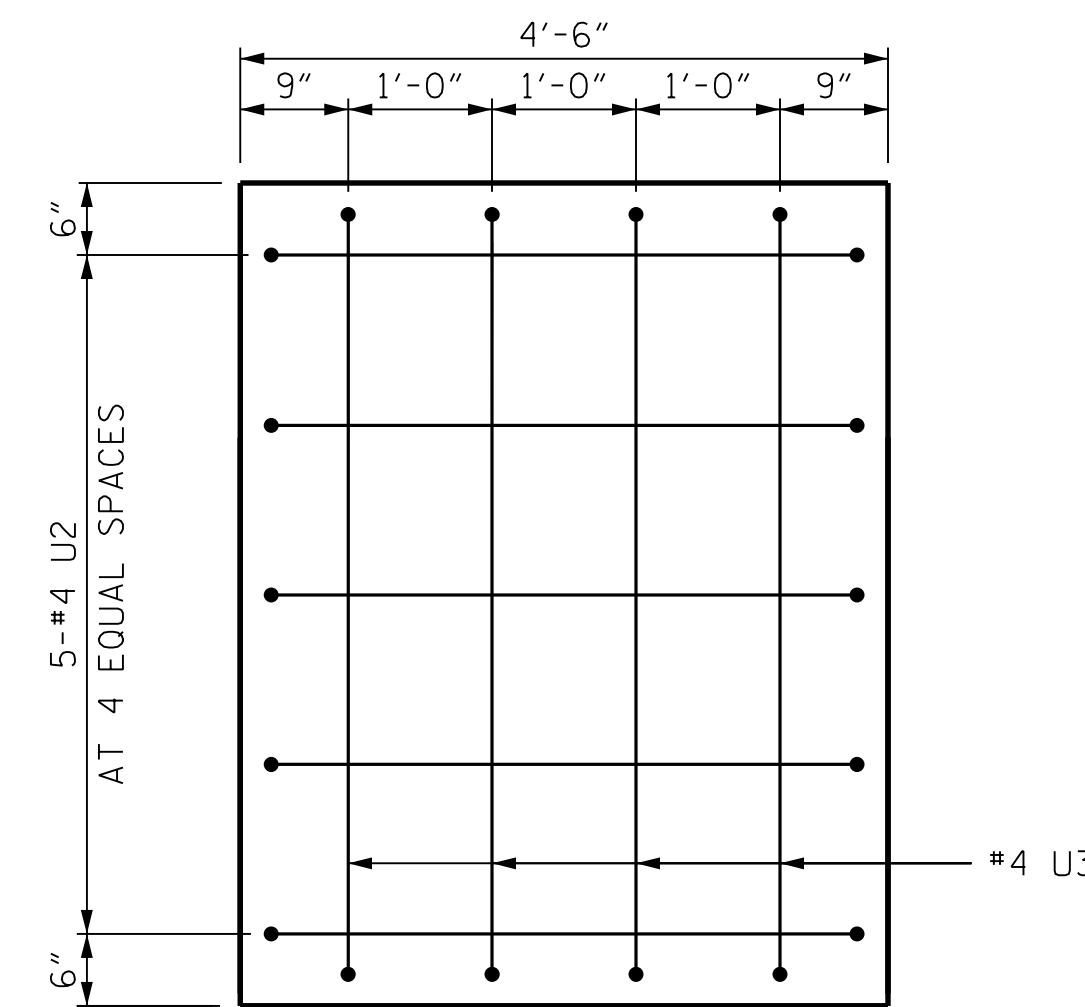


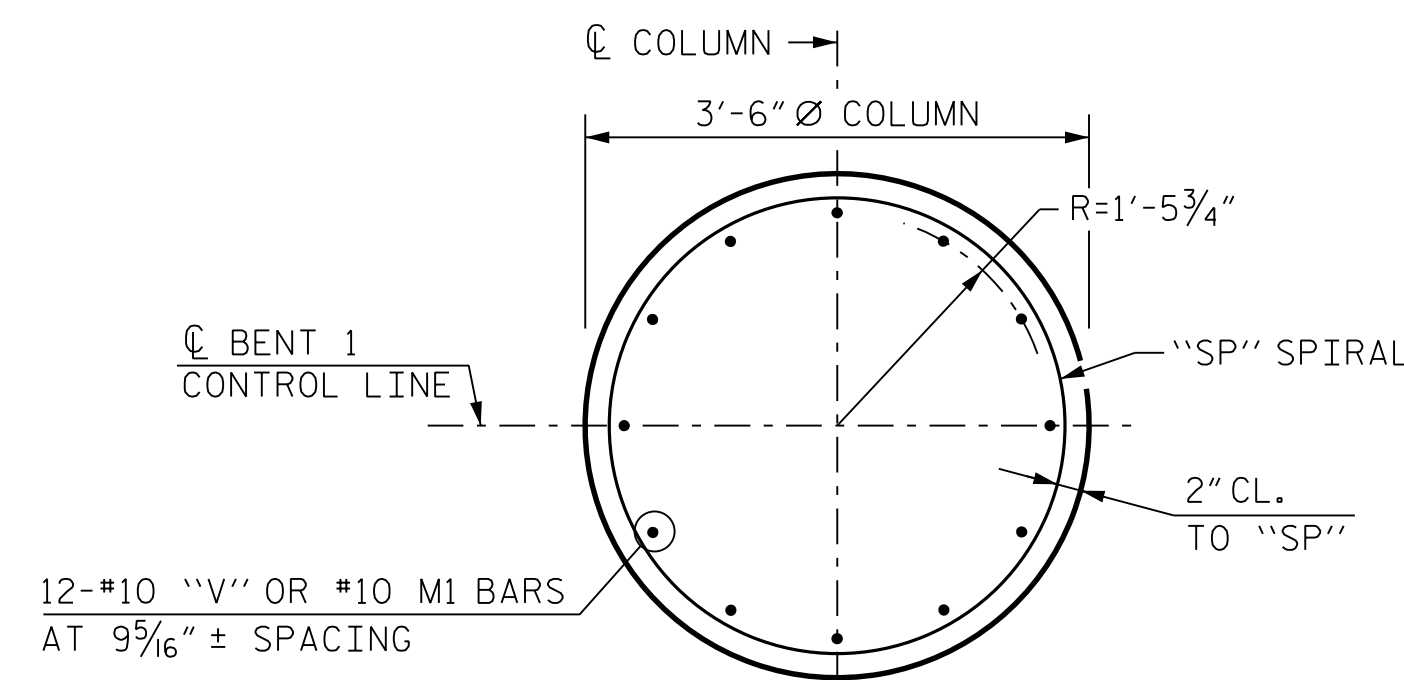
SECTION A-A



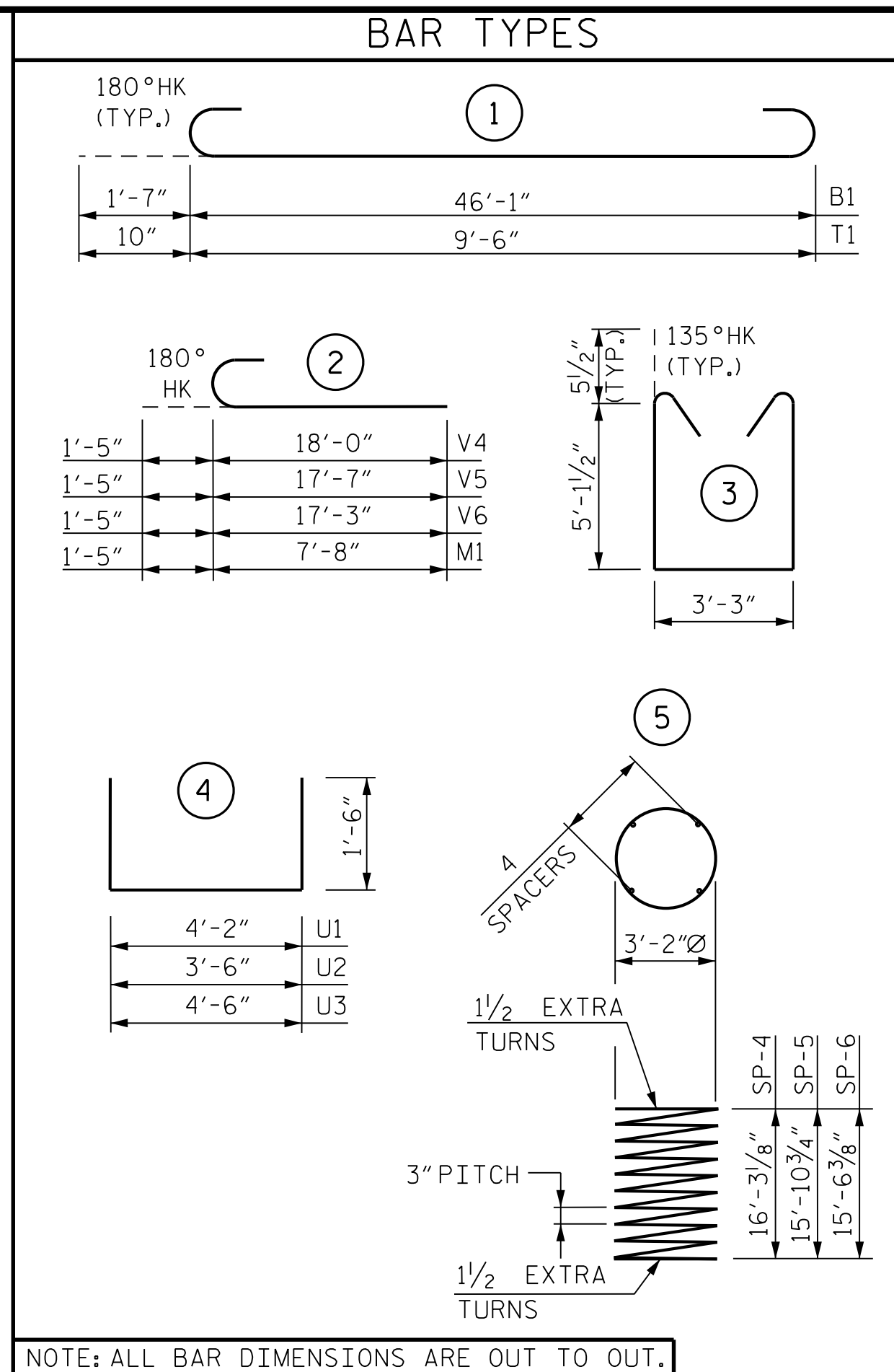
SECTION B-B



END OF CAP DETAIL

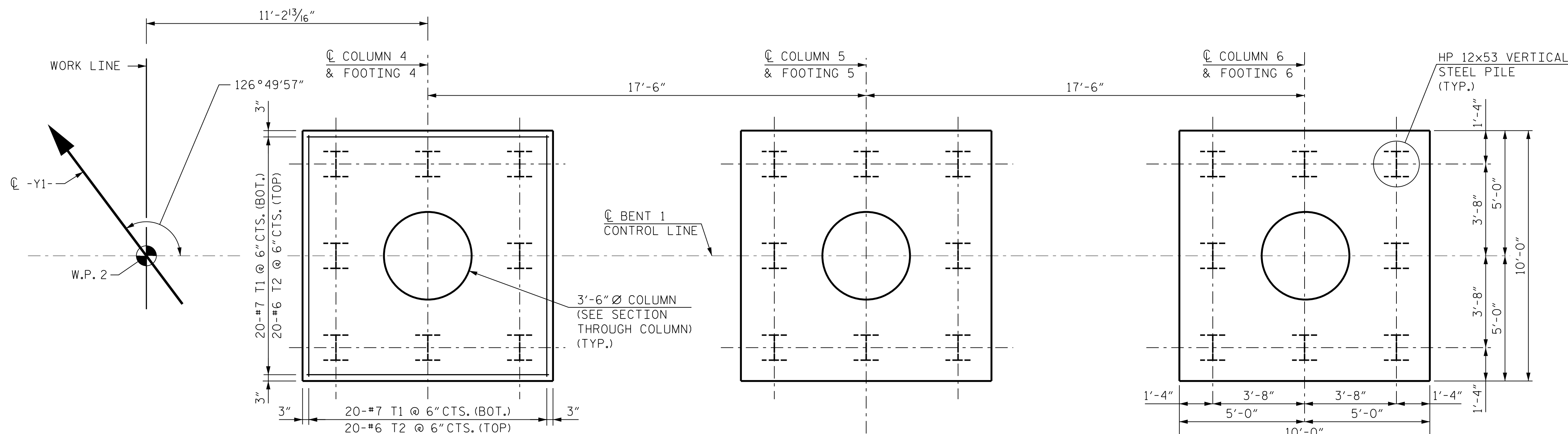


SECTION THROUGH COLUMN



NOTE: ALL BAR DIMENSIONS ARE OUT TO OUT.

BILL OF MATERIAL					
BENT 1 - STAGE 1					
BAR	NO.	SIZE	TYPE	LENGTH	WEIGHT
B1	6	#11		49'-3"	1,570
B2	10	#11	STR.	46'-2"	2,453
B3	16	#6	STR.	46'-2"	1,109
M1	36	#10		9'-1"	1,407
S1	164	#5		14'-5"	2,466
T1	120	#7		11'-2"	2,739
T2	120	#6	STR.	9'-6"	1,712
U1	45	#4		7'-2"	215
U2	10	#4		6'-6"	43
U3	8	#4		7'-6"	40
V4	12	#10		19'-5"	1,003
V5	12	#10		19'-0"	981
V6	12	#10		18'-8"	964
REINFORCING STEEL				16,702	LBS.
SP-4	1	*	5	668'-3"	446
SP-5	1	*	5	654'-1"	437
SP-6	1	*	5	639'-7"	427
SPIRAL COLUMN REINFORCING STEEL				1,310	LBS.
* "SP" SPIRAL REINFORCING STEEL SHALL BE W20 OR D-20 COLD DRAWN WIRE OR #4 PLAIN OR DEFORMED BAR					
CLASS "A" CONCRETE					
POUR 1 (FOOTINGS)				47.2	C.Y.
POUR 2 (COLUMNS)				16.7	C.Y.
POUR 3 (CAP)				43.6	C.Y.
TOTAL				107.5	C.Y.
HP 12x53 STEEL PILES					
NO.	24				
L.F.	960				
PILE DRIVING EQUIPMENT SETUP FOR HP 12x53 STEEL PILES				24	EA.



PLAN OF FOOTINGS

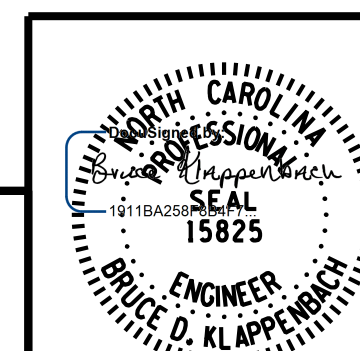
(DIMENSIONS AND REINFORCING STEEL ARE TYPICAL FOR EACH FOOTING)

PROJECT NO. I-5972
 JOHNSTON COUNTY
 STATION: 36+93.50 -Y1-

SHEET 2 OF 2

STATE OF NORTH CAROLINA
 DEPARTMENT OF TRANSPORTATION
 RALEIGH

SUBSTRUCTURE
 BENT 1
 DETAILS AND
 BILL OF MATERIAL
 STAGE 1



RK&K
 P: (919) 878-9560
 8601 Six Forks Road, Forum 1 Suite 700
 Raleigh, North Carolina 27615 | NC License No. F-0112
 Engineers | Construction Managers | Planners | Scientists
 www.rkk.com

10/4/2021
 RESPONSIVE PEOPLE | CREATIVE SOLUTIONS
 DOCUMENT NOT CONSIDERED FINAL
 UNLESS ALL SIGNATURES COMPLETED

REVISIONS					
NO.	BY:	DATE:	NO.	BY:	DATE:
1			3		
2			4		

SHEET NO.	
S-42	TOTAL SHEETS 54

R:\Structures\DN\BR_500066\Final\I5972_SMU_B1_IB_500066.dgn

DRAWN BY : B. A. HAAG DATE : JUN 2021
 CHECKED BY : D. M. RAGAN DATE : JUN 2021
 DESIGN ENGINEER OF RECORD : B. D. KLAPPENBACH DATE : JUN 2021