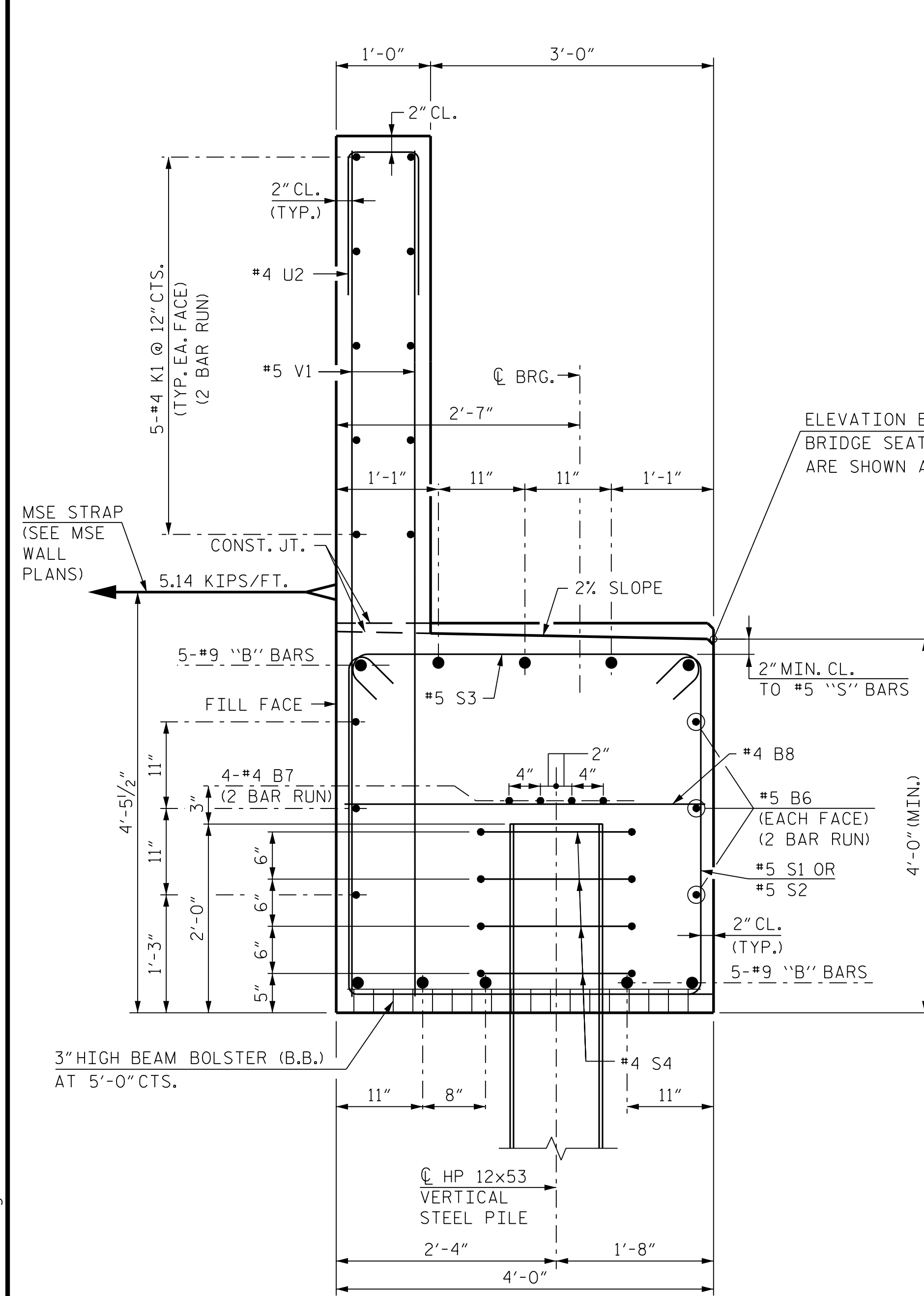
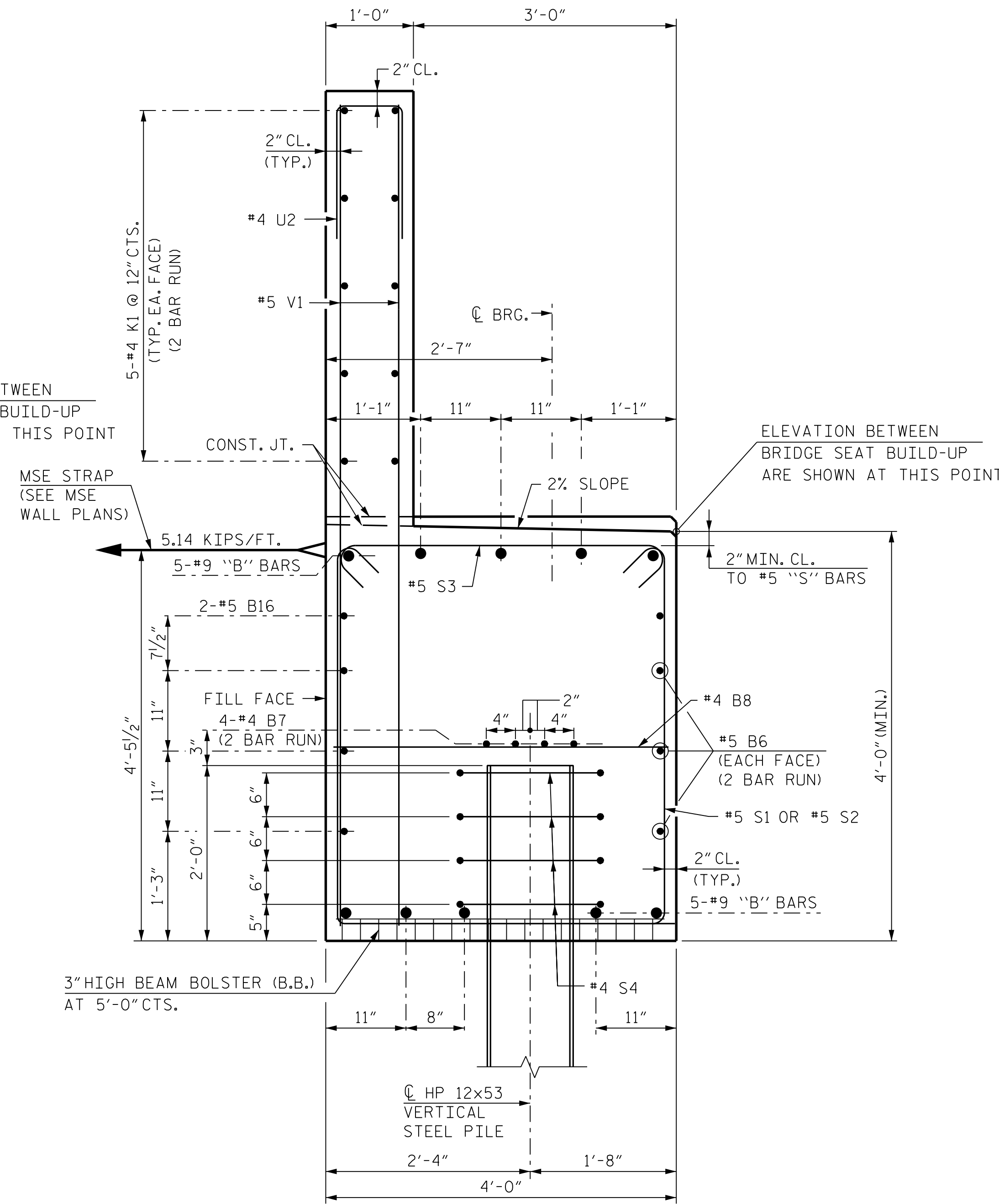


R:\Structures\DON\BR_500066\Final\I5972_SMU_E1.1C_500066.dgn

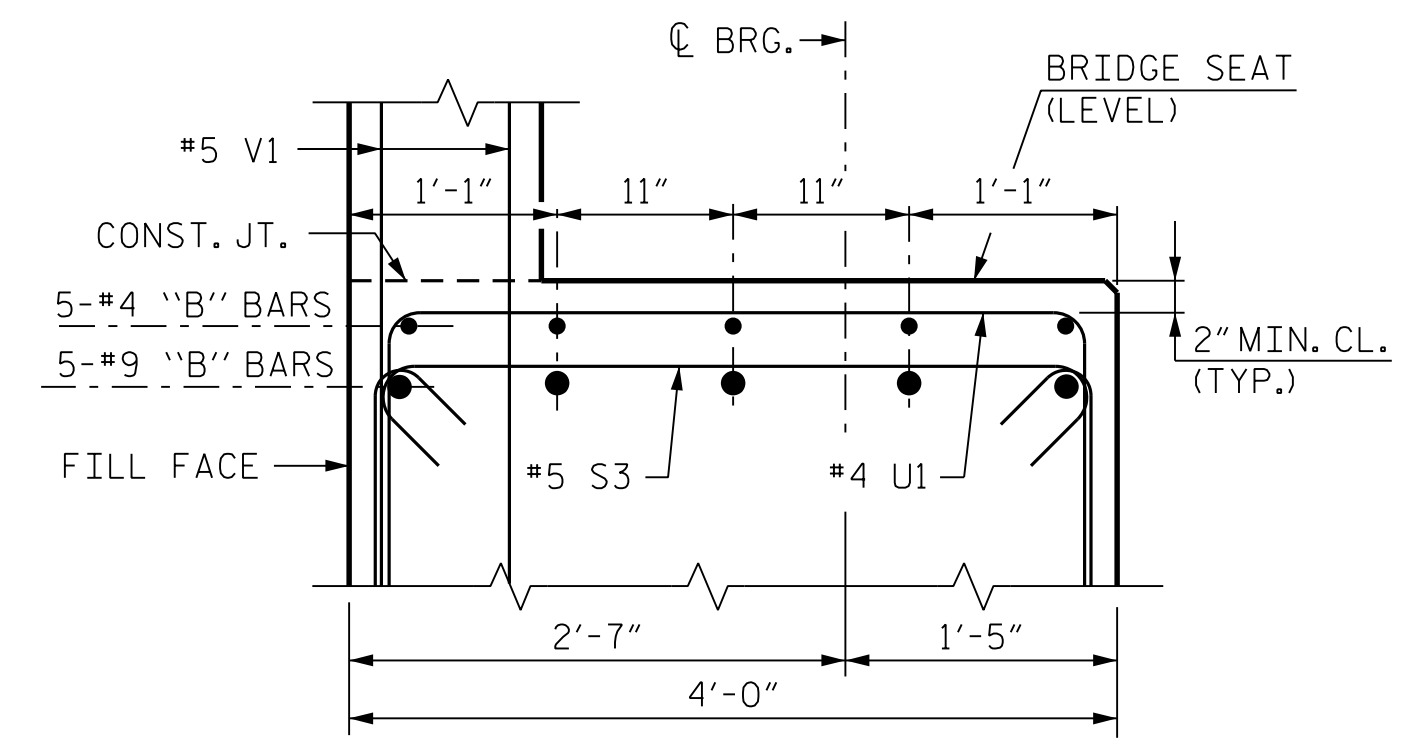
10/4/2021 10:44:2021
 DRAWN BY : B. A. HAAG DATE : JUN 2021
 CHECKED BY : D. M. RAGAN DATE : JUN 2021
 DESIGN ENGINEER OF RECORD : B. D. KLAPPENBACH DATE : JUN 2021



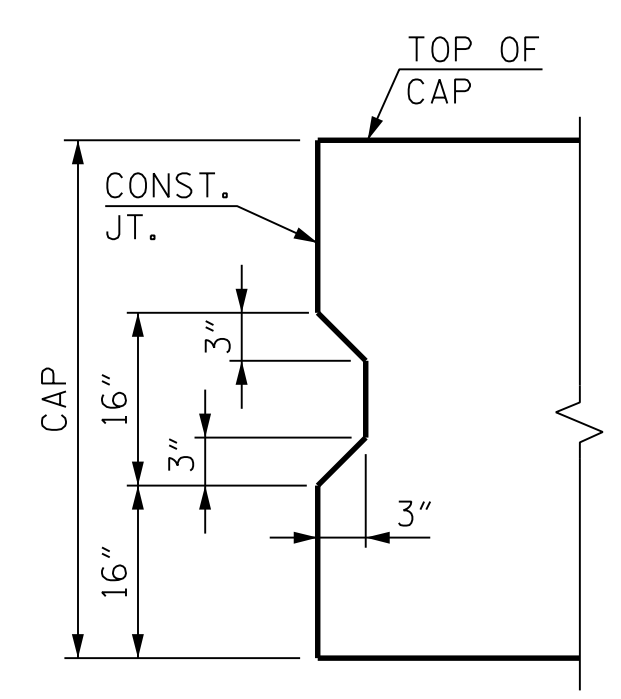
SECTION A-A
 (DIMENSIONS SHOWN ARE NORMAL TO THE END BENT)



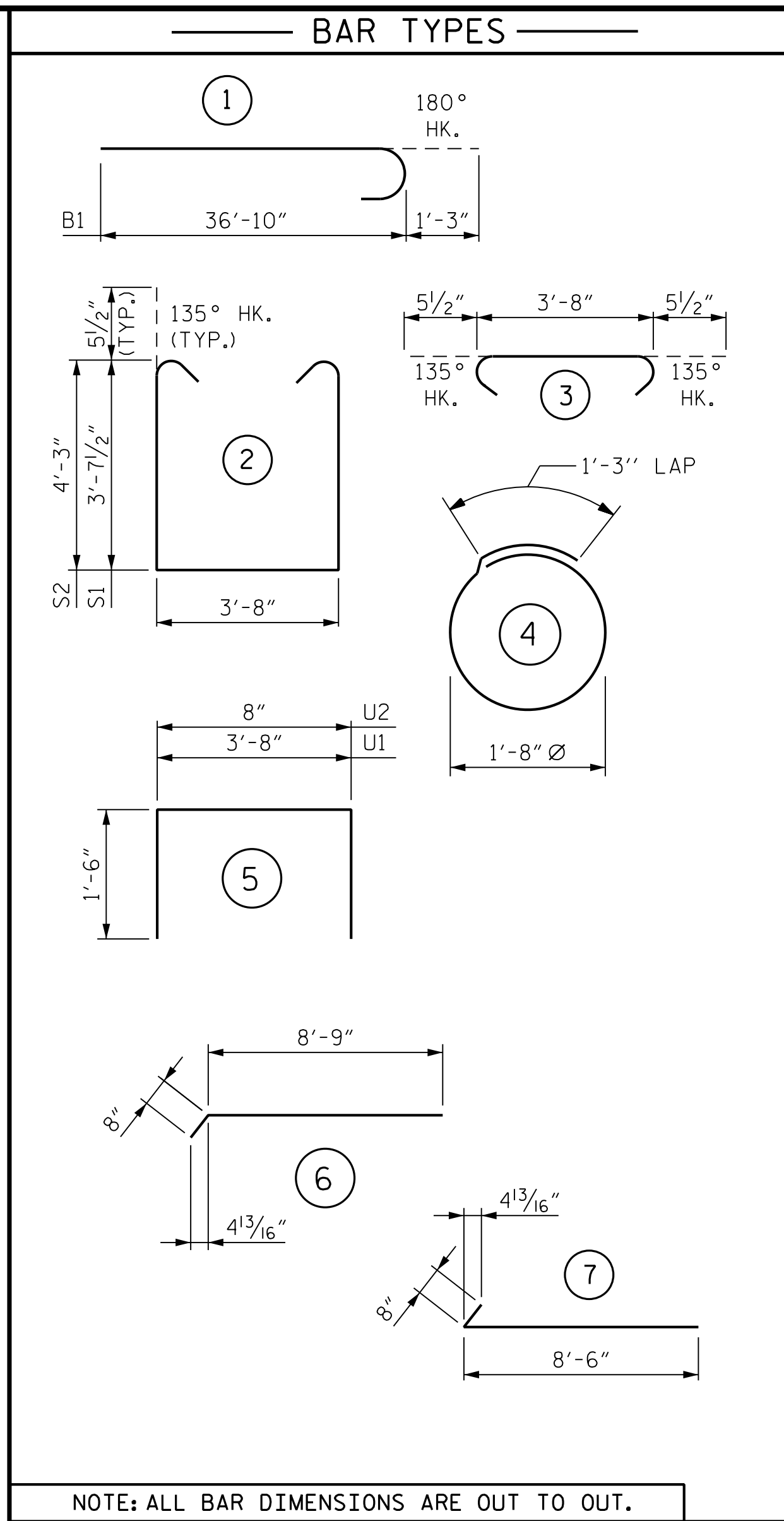
SECTION C-C
 (DIMENSIONS SHOWN ARE NORMAL TO THE END BENT)



SECTION B-B



SHEAR KEY DETAIL

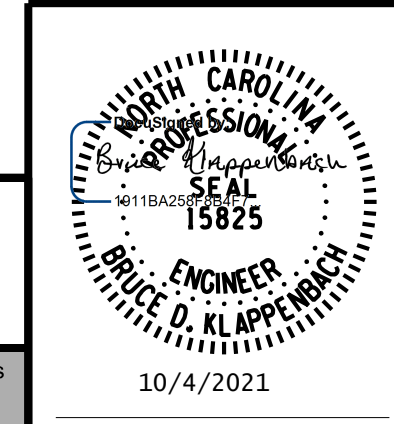


BILL OF MATERIAL					
END BENT 1 - STAGE 1					
BAR	NO.	SIZE	TYPE	LENGTH	WEIGHT
B1	10	#9		38'-1"	1,295
B2	5	#9	STR.	21'-8"	368
B3	5	#9	STR.	25'-9"	438
B4	10	#4	STR.	10'-2"	68
B5	5	#4	STR.	3'-11"	13
B6	12	#5	STR.	28'-7"	358
B7	8	#4	STR.	29'-3"	156
B8	13	#4	STR.	3'-8"	32
B16	2	#5	STR.	23'-7"	49
H1	24	#4		9'-2"	147
K1	20	#4	STR.	29'-3"	391
K2	2	#4	STR.	4'-7"	6
K3	2	#4	STR.	4'-10"	6
S1	46	#5		11'-10"	568
S2	44	#5		13'-1"	600
S3	90	#5		4'-7"	430
S4	28	#4		6'-6"	122
U1	30	#4		6'-8"	134
U2	49	#4		3'-8"	120
V1	98	#5	STR.	8'-0"	818
V2	28	#5	STR.	10'-0"	292
REINFORCING STEEL					6,411 LBS.
CLASS "A" CONCRETE					
POUR 1 (CAP AND LOWER WINGS)					35.7 C.Y.
POUR 2 (BACKWALL & UPPER WINGS)					11.5 C.Y.
TOTAL					47.2 C.Y.
HP 12x53 STEEL PILES					
NO.					8
L.F.					480
STEEL PILE POINTS					8 EA.
PILE DRIVING EQUIPMENT SETUP FOR HP 12x53 STEEL PILES					8 EA.

PROJECT NO. I-5972
 JOHNSTON COUNTY
 STATION: 36+93.50 -Y1-

SHEET 3 OF 3

RK&K
 P: (919) 878-9560
 8601 Six Forks Road, Forum 1 Suite 700
 Raleigh, North Carolina 27615 | NC License No. F-0112
 Engineers | Construction Managers | Planners | Scientists
 www.rkk.com
 Responsive People | Creative Solutions



STATE OF NORTH CAROLINA
 DEPARTMENT OF TRANSPORTATION
 RALEIGH

SUBSTRUCTURE
 END BENT 1
 MISCELLANEOUS DETAILS
 AND BILL OF MATERIAL
 STAGE 1

REVISIONS					
NO.	BY:	DATE:	NO.	BY:	DATE:
1			3		
2			4		

SHEET NO. S-37
 TOTAL SHEETS 54

DOCUMENT NOT CONSIDERED FINAL
 UNLESS ALL SIGNATURES COMPLETED