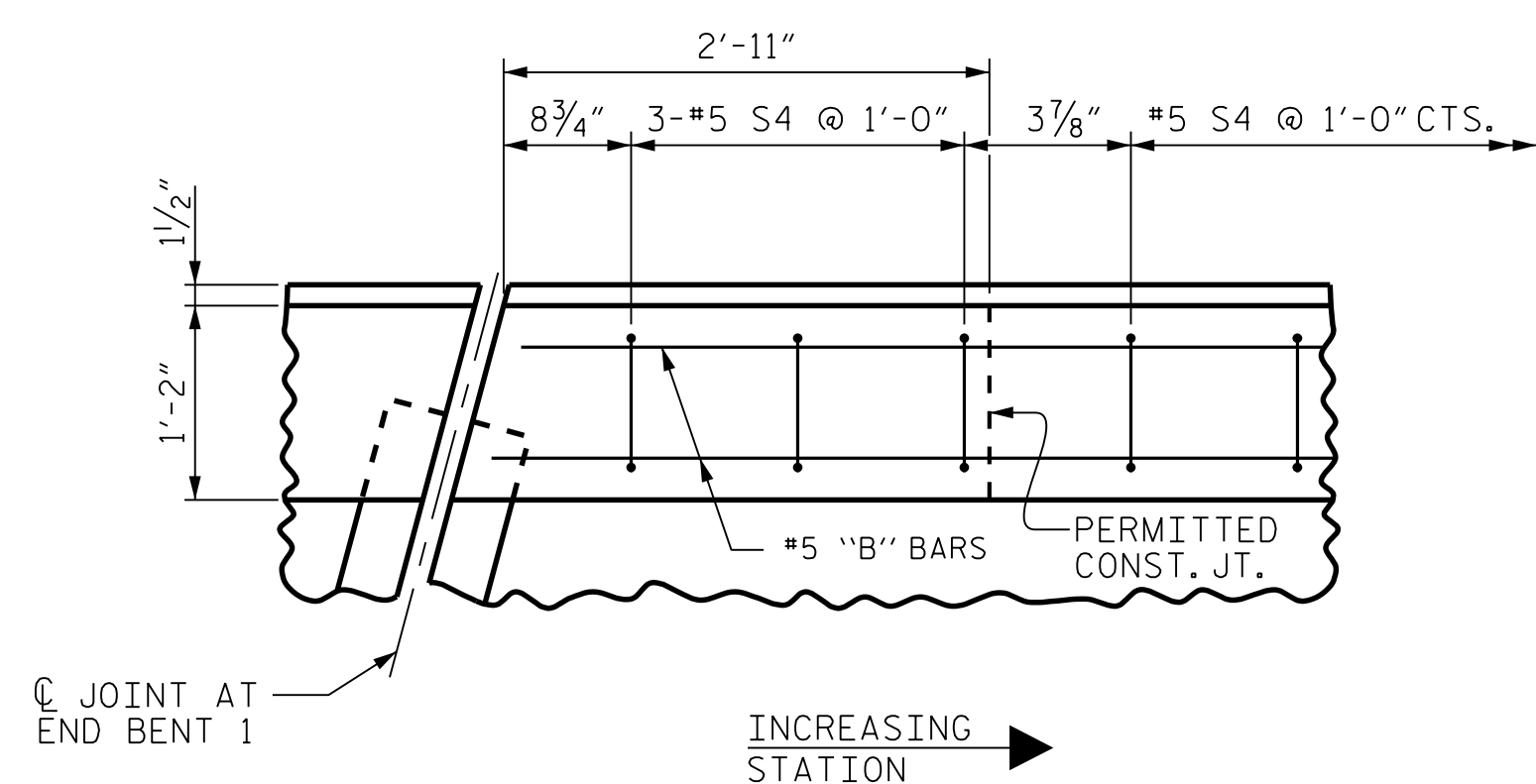
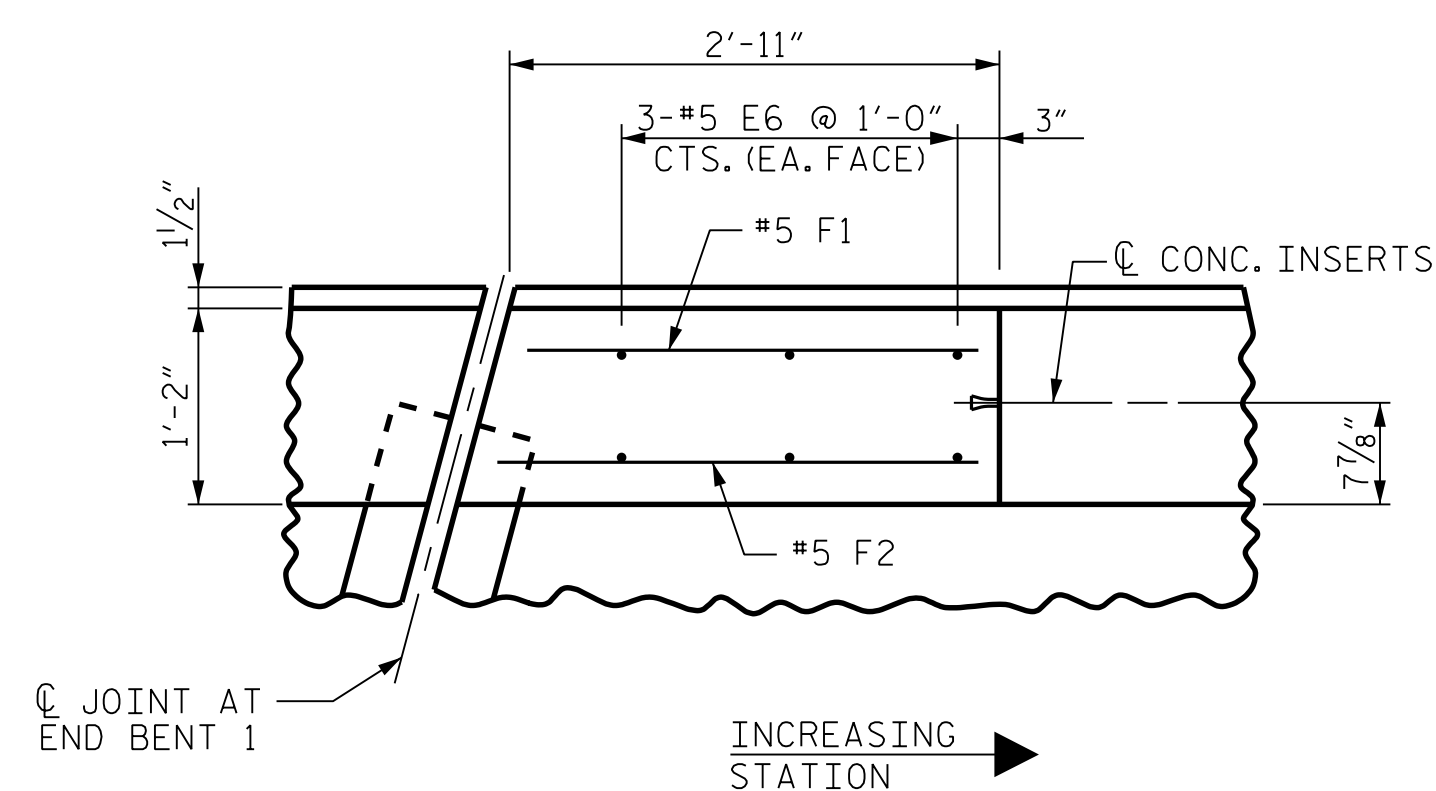


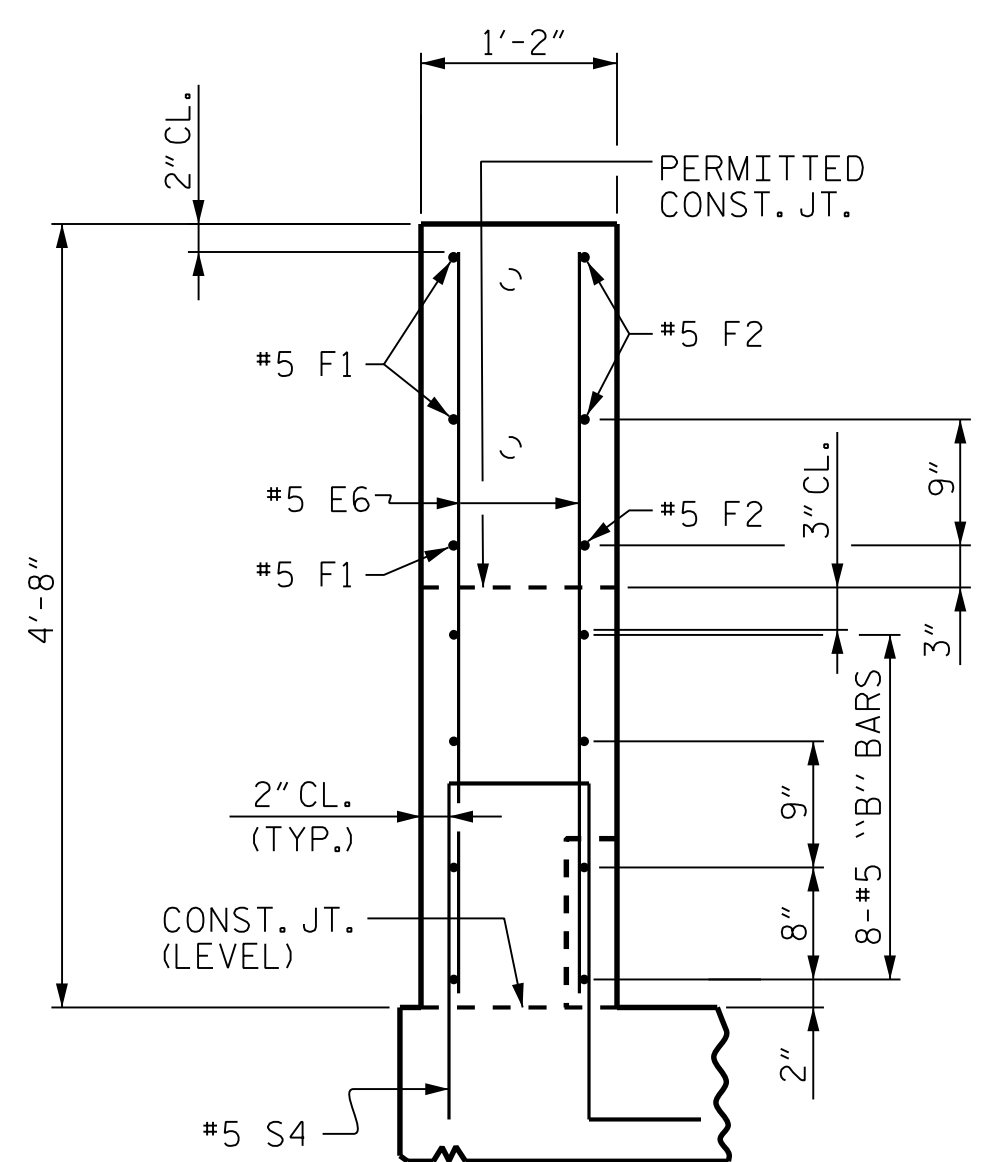
10/4/2021 R:\Structures\DON\BR_500066\Final\I5972_SML_CP3_500066.dgn



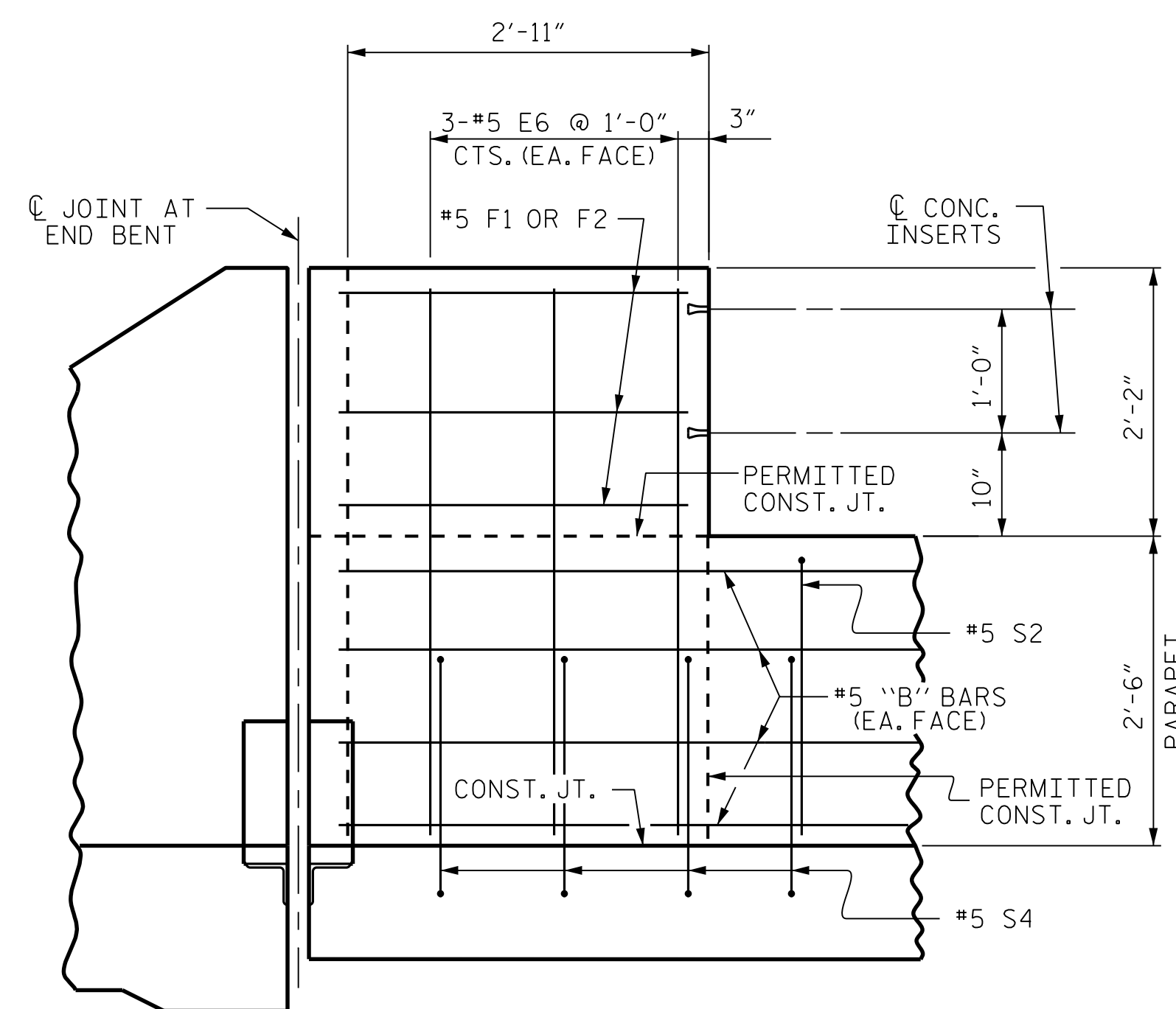
PLAN OF PARAPET



PLAN OF METAL RAIL ATTACHMENT POST



END VIEW



ELEVATION

PARAPET AND METAL RAIL ATTACHMENT POST FOR TWO BAR METAL RAIL
(LEFT SIDE - STAGE 2)

NOTES:

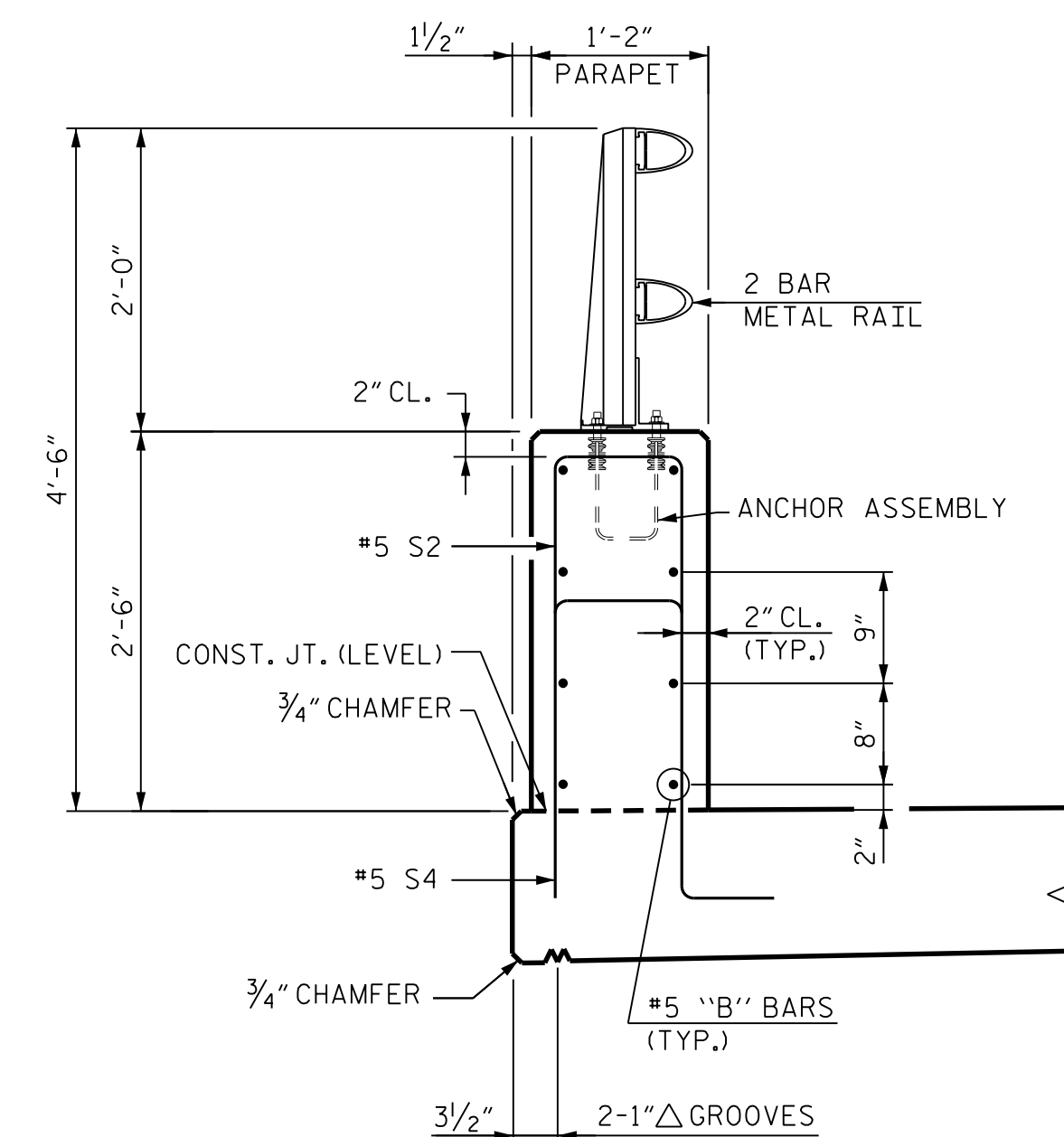
THE PARAPET IN EACH SPAN SHALL NOT BE CAST UNTIL ALL SLAB CONCRETE IN THAT SPAN HAS BEEN CAST AND HAS REACHED A MINIMUM COMPRESSIVE STRENGTH OF 3,000 PSI.

ALL REINFORCING STEEL IN PARAPET SHALL BE EPOXY COATED.

VERTICAL GROOVED CONTRACTION JOINTS, 1/2" IN DEPTH, SHALL BE TOOLED IN ALL EXPOSED FACES OF THE PARAPET AND IN ACCORDANCE WITH ARTICLE 825-10(B) OF THE STANDARD SPECIFICATIONS. THE CONTRACTION JOINTS SHALL BE LOCATED AT EACH THIRD POINT BETWEEN PARAPET EXPANSION JOINTS. ONLY ONE CONTRACTION JOINT IS REQUIRED AT MIDPOINT OF PARAPET SEGMENTS LESS THAN 20 FEET IN LENGTH AND NO CONTRACTION JOINTS ARE REQUIRED FOR THOSE SEGMENTS LESS THAN 10 FEET IN LENGTH.

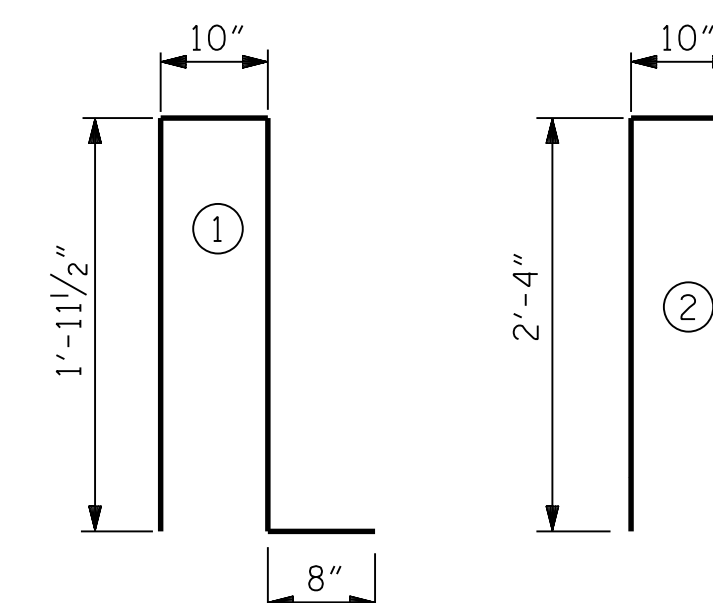
FOR DETAILS OF CONCRETE INSERTS AND ANCHOR ASSEMBLIES, SEE "2 BAR METAL RAIL" AND "RAIL POST SPACINGS AND END OF RAIL" SHEETS.
FOR GUARDRAIL ANCHOR ASSEMBLY DETAILS, SEE "GUARDRAIL ANCHORAGE DETAILS" SHEET.

FOR END POST BILL OF MATERIAL ON APPROACH SLABS, SEE SHEET S-53.



SECTION THROUGH PARAPET
(LEFT SIDE - STAGE 2)

BAR TYPES



ALL BAR DIMENSIONS ARE OUT TO OUT.

BILL OF MATERIAL - STAGE 2

FOR CONCRETE PARAPET & 2 METAL RAIL ATTACHMENT POSTS

BAR	NO.	SIZE	TYPE	LENGTH	WEIGHT
*B1	16	5	STR.	26'-9"	446
*B2	32	5	STR.	26'-5"	882
*B3	8	5	STR.	27'-4"	228
*B4	8	5	STR.	27'-11"	233
*E6	12	5	STR.	4'-4"	54
*F1	6	5	STR.	2'-6"	16
*F2	6	5	STR.	3'-1"	19
*S2	212	5	2	5'-6"	1,216
*S4	218	5	1	5'-5"	1,232

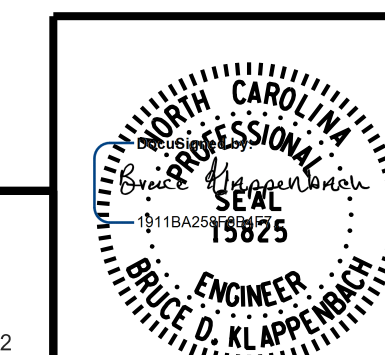
* EPOXY COATED REINFORCING STEEL	4,326 LBS.
CLASS "AA" CONCRETE (PARAPET)	24.4 CY
1'-2" x 2'-6" CONCRETE PARAPET	218.24 LIN. FT.

PROJECT NO. I-5972
JOHNSTON COUNTY
STATION: 36+93.50 -Y1-

SHEET 3 OF 3

STATE OF NORTH CAROLINA
DEPARTMENT OF TRANSPORTATION
RALEIGH

SUPERSTRUCTURE
CONCRETE PARAPET
AND RAIL ATTACHMENT
POST DETAILS AND
BILL OF MATERIAL
LEFT SIDE - STAGE 2



10/4/2021

DRAWN BY : B. A. HAAG DATE : JUN 2021
CHECKED BY : B. D. KLAPPENBACH DATE : JUN 2021
DESIGN ENGINEER OF RECORD : B. D. KLAPPENBACH DATE : JUN 2021

DOCUMENT NOT CONSIDERED FINAL
UNLESS ALL SIGNATURES COMPLETED

REVISIONS						SHEET NO.
NO.	BY:	DATE:	NO.	BY:	DATE:	S-23
1			3			TOTAL SHEETS
2			4			54