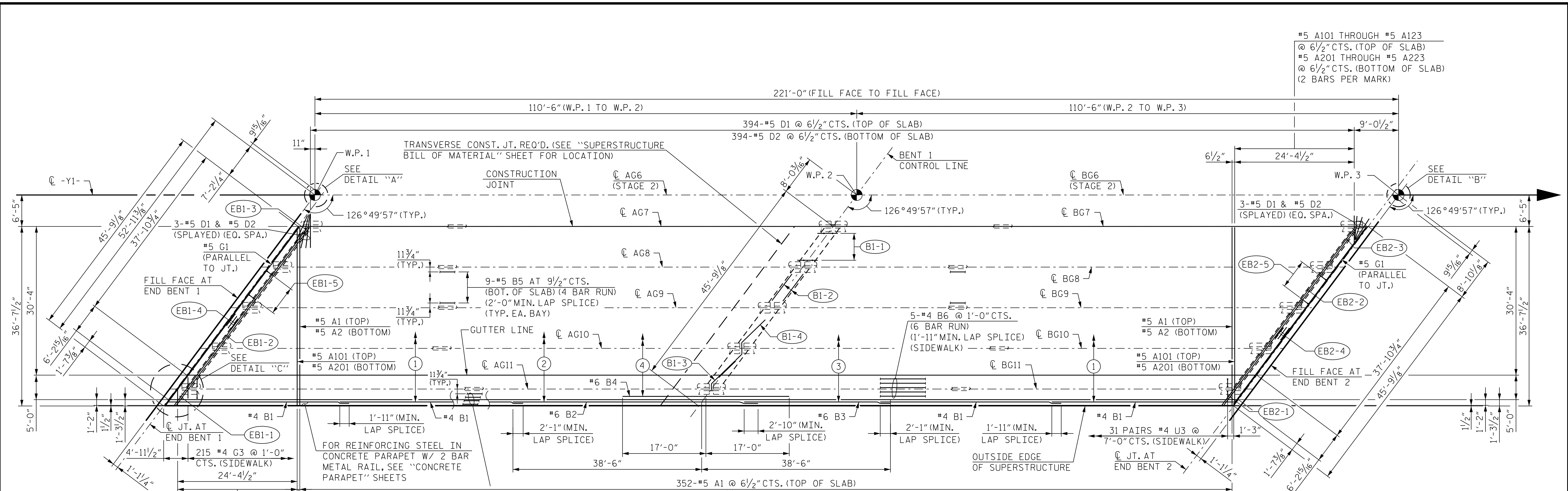


R:\Structures\DON\BR_500066\Final\I5972_SML_S1_500066.dgn



#5 A101 THROUGH #5 A123 @ 6 1/2" CTS. (TOP OF SLAB)
 #5 A201 THROUGH #5 A223 @ 6 1/2" CTS. (BOTTOM OF SLAB)
 (2 BARS PER MARK)

PLAN OF SPANS
(STAGE 1)

END BENT 1 DIAPHRAGM DETAILS

EB1-1	2-#8 K1 (OVER EXT. GDR.) (4'-9" MIN. SPLICE)
EB1-2	2-#8 K2 (OVER EA. INT. GDR.) (4'-9" MIN. SPLICE)
EB1-3	2-#8 K3 (OVER GDR. 7) (4'-9" MIN. SPLICE)
EB1-4	3-#6 K4 (TYP. EA. BAY)
EB1-5	8-#4 S1 AND 8-#5 S2 AT 1'-0" CTS. (TYP. EA. BAY)

BENT 1 DIAPHRAGM DETAILS

B1-1	2-#4 U1, 5-#4 U2 AT 1'-0" CTS. (TYP. EA. BAY)
B1-2	1-#4 K7, 2-#4 K8 & 2-#4 K9 (TYP. EA. FACE) (TYP. EA. BAY)
B1-3	5-#4 K5 BETWEEN GDRS. (TYP. EXT. GDRS.)
B1-4	5-#4 K6 BETWEEN GDRS. (TYP. INT. GDRS.)

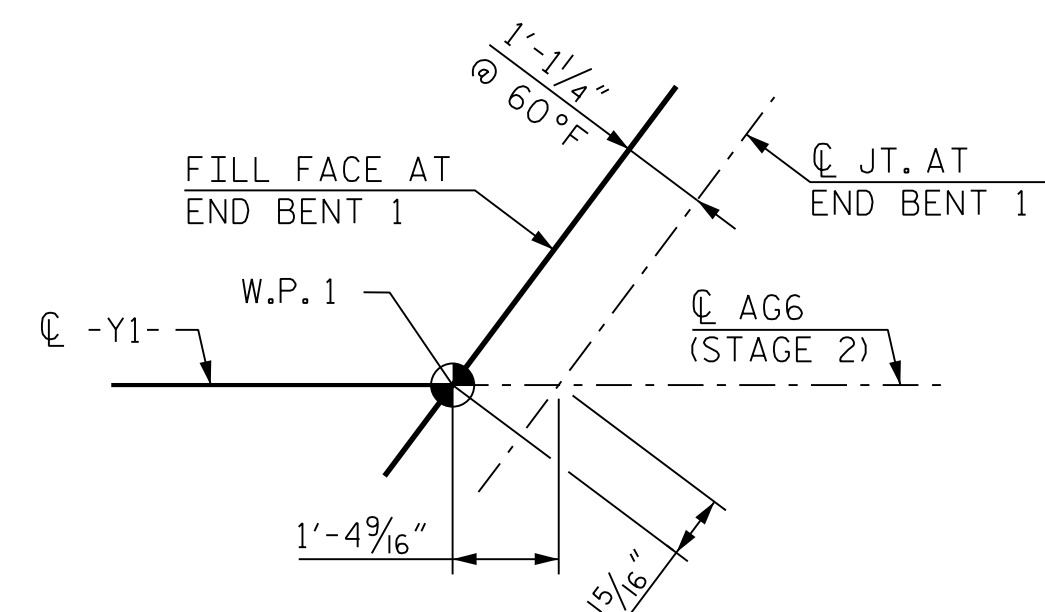
SLAB REINFORCING

①	32-#4 B1 @ 1'-2" CTS. (TOP OF SLAB) (2 BAR RUN) (1'-11" MIN. LAP SPLICE)
②	32-#6 B2 @ 1'-2" CTS. (TOP OF SLAB) **
③	32-#6 B3 @ 1'-2" CTS. (TOP OF SLAB) **
④	31-#6 B4 @ 1'-2" CTS. (TOP OF SLAB)

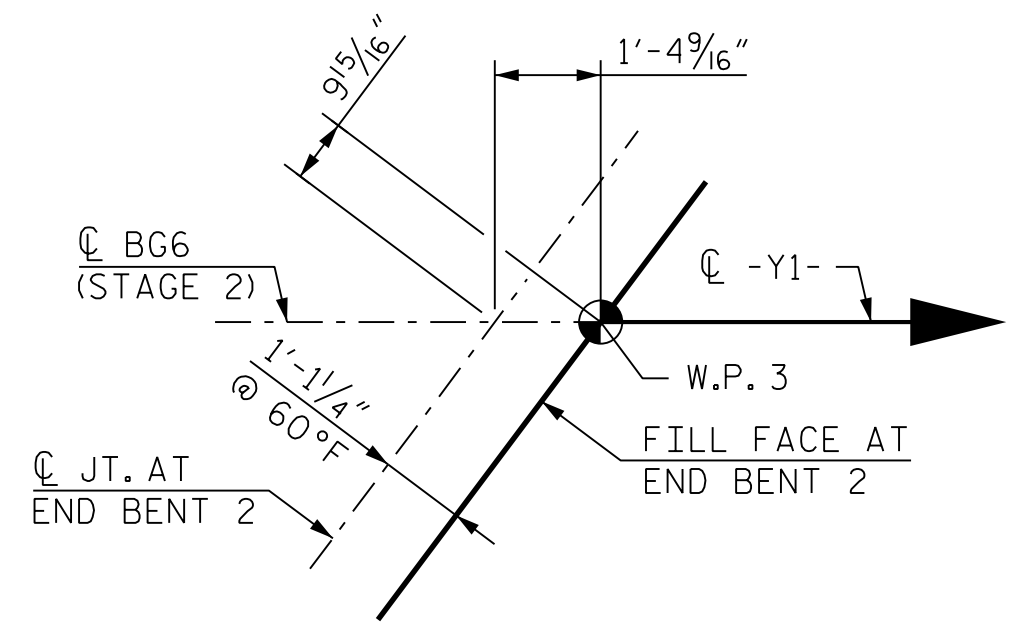
** ALTERNATE #6 B2 AND #6 B3 ALONG BENT CENTERLINE, 2'-10" MIN. SPLICE

END BENT 2 DIAPHRAGM DETAILS

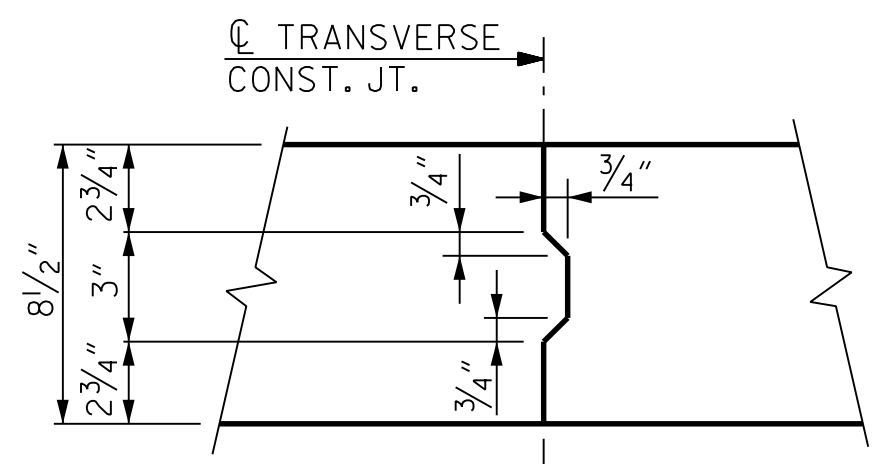
EB2-1	2-#8 K1 (OVER EXT. GDR.) (4'-9" MIN. SPLICE)
EB2-2	2-#8 K2 (OVER EA. INT. GDR.) (4'-9" MIN. SPLICE)
EB2-3	2-#8 K3 (OVER GDR. 7) (4'-9" MIN. SPLICE)
EB2-4	3-#6 K4 (TYP. EA. BAY)
EB2-5	8-#4 S1 AND 8-#5 S2 AT 1'-0" CTS. (TYP. EA. BAY)



DETAIL "A"

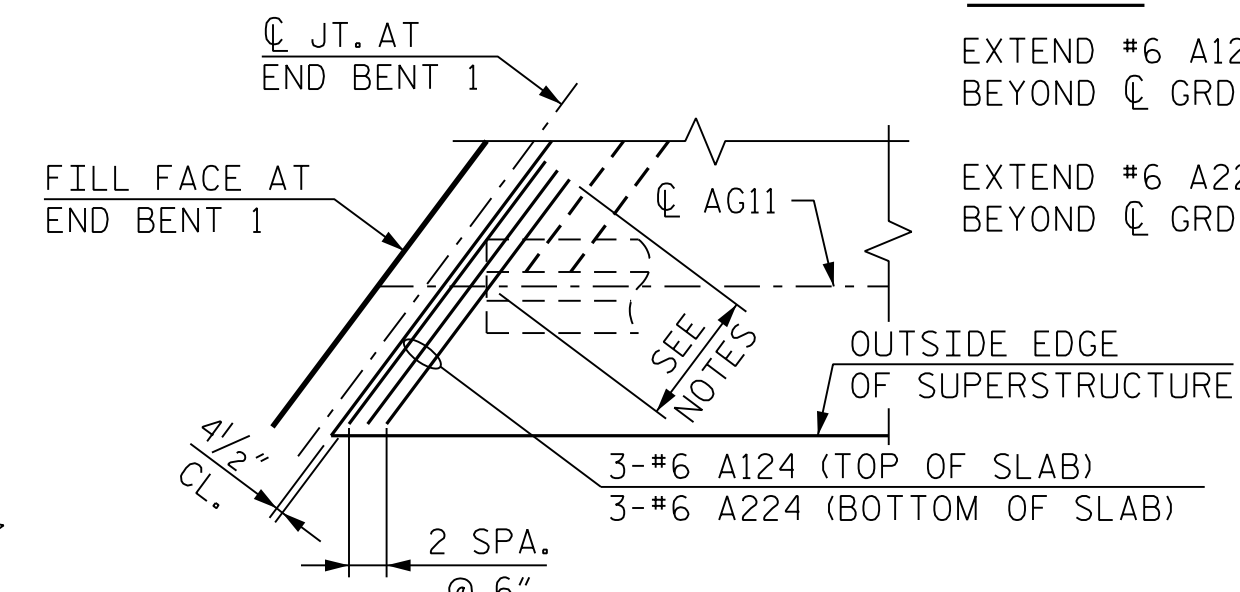


DETAIL "B"



NOTE: REINFORCING STEEL IN SLAB NOT SHOWN. LONGITUDINAL AND TRANSVERSE REINFORCING STEEL SHALL BE CONTINUOUS THROUGH JOINT.

TRANSVERSE CONSTRUCTION JOINT IN DECK SLAB



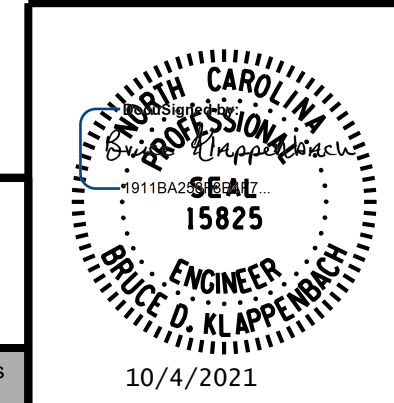
DETAIL "C"
(END BENT 1 SHOWN, END BENT 2 SIMILAR FOR STAGE 2 CONSTRUCTION)

NOTES:
 EXTEND #6 A124 2'-10" (MIN.) BEYOND CL GRD.
 EXTEND #6 A224 2'-5" (MIN.) BEYOND CL GRD.

PROJECT NO. I-5972
JOHNSTON COUNTY
 STATION: 36+93.50 -Y1-

SHEET 1 OF 2

STATE OF NORTH CAROLINA
 DEPARTMENT OF TRANSPORTATION
 RALEIGH
SUPERSTRUCTURE
 PLAN OF SPANS
 SPANS A AND B
 STAGE 1



RK&K
 P: (919) 878-9560
 8601 Six Forks Road, Forum 1 Suite 700
 Raleigh, North Carolina 27615 | NC License No. F-0112
 Engineers | Construction Managers | Planners | Scientists
 www.rkk.com
 Responsive People | Creative Solutions

REVISIONS				SHEET NO.			
NO.	BY:	DATE:	NO.	BY:	DATE:	S-11	
1			3			TOTAL SHEETS	
2			4			54	

DOCUMENT NOT CONSIDERED FINAL UNLESS ALL SIGNATURES COMPLETED

DRAWN BY : B. A. HAAG DATE : JUN 2021
 CHECKED BY : B. D. KLAPPENBACH DATE : JUN 2021
 DESIGN ENGINEER OF RECORD : B. D. KLAPPENBACH DATE : JUN 2021