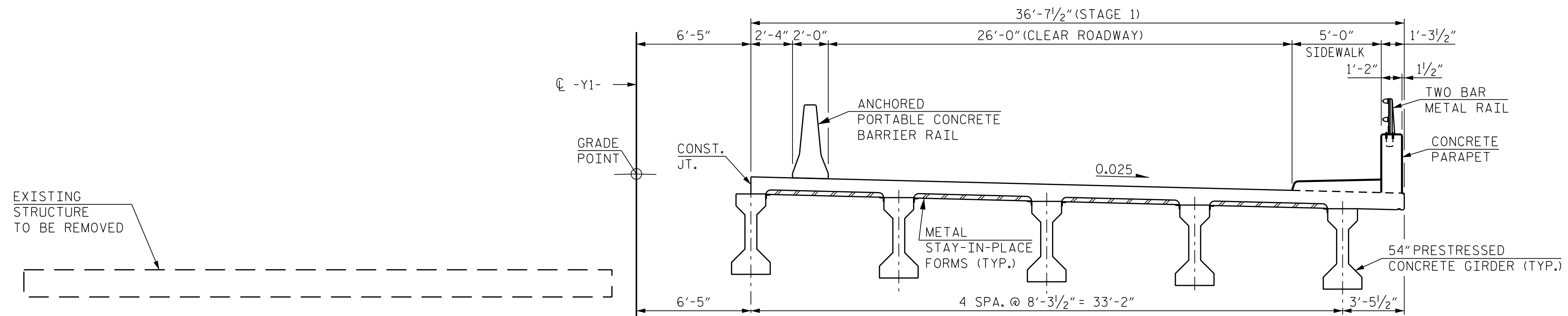
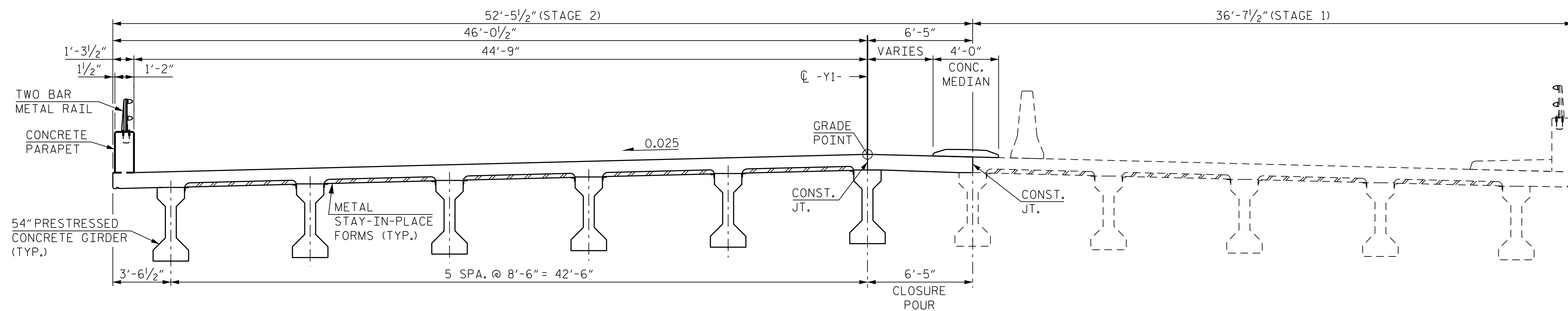


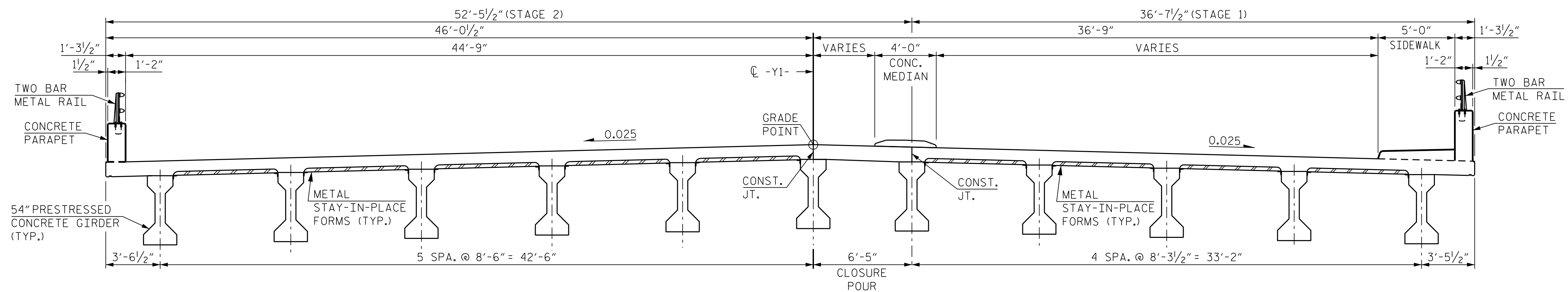
NOTE:
SEE TRAFFIC CONTROL PLANS FOR LOCATION AND PAY LIMITS OF THE ANCHORED PORTABLE CONCRETE BARRIER RAIL.



TYPICAL SECTION - STAGE 1 CONSTRUCTION



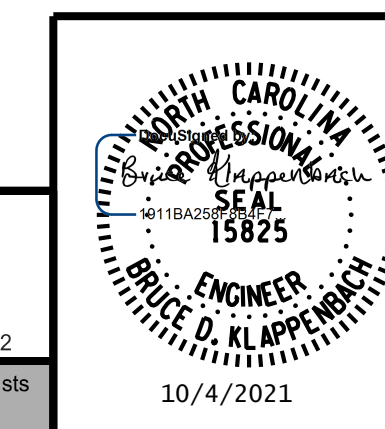
TYPICAL SECTION - STAGE 2 CONSTRUCTION



TYPICAL SECTION

PROJECT NO. I-5972
JOHNSTON COUNTY
STATION: 36+93.50 -Y1-

STATE OF NORTH CAROLINA					
DEPARTMENT OF TRANSPORTATION					
RALEIGH					
SUPERSTRUCTURE					
CONSTRUCTION SEQUENCE					
REVISIONS					
NO.	BY:	DATE:	NO.	BY:	DATE:
1			3		
2			4		
SHEET NO.					S-5
TOTAL SHEETS					54



RK&K
P: (919) 878-9560
8601 Six Forks Road, Forum 1 Suite 700
Raleigh, North Carolina 27615 | NC License No. F-0112
Engineers | Construction Managers | Planners | Scientists
www.rkk.com
Responsive People | Creative Solutions

10/4/2021

**DOCUMENT NOT CONSIDERED FINAL
UNLESS ALL SIGNATURES COMPLETED**

10/4/2021 R:\Structures\DON\BR_500066\Final\I5972_SMU_PC_500066.dgn

DRAWN BY : B. A. HAAG DATE : JUN 2021
CHECKED BY : B. D. KLAPPENBACH DATE : JUN 2021
DESIGN ENGINEER OF RECORD : B. D. KLAPPENBACH DATE : JUN 2021