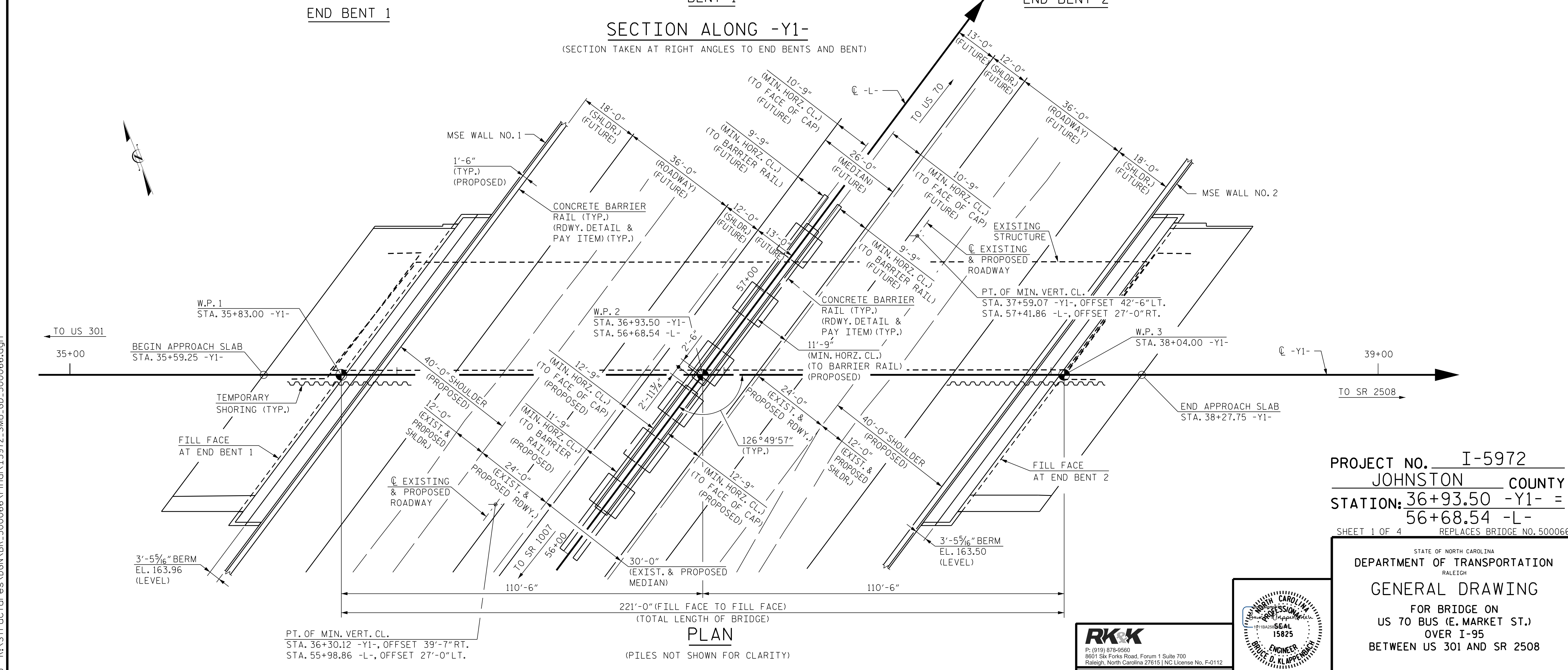
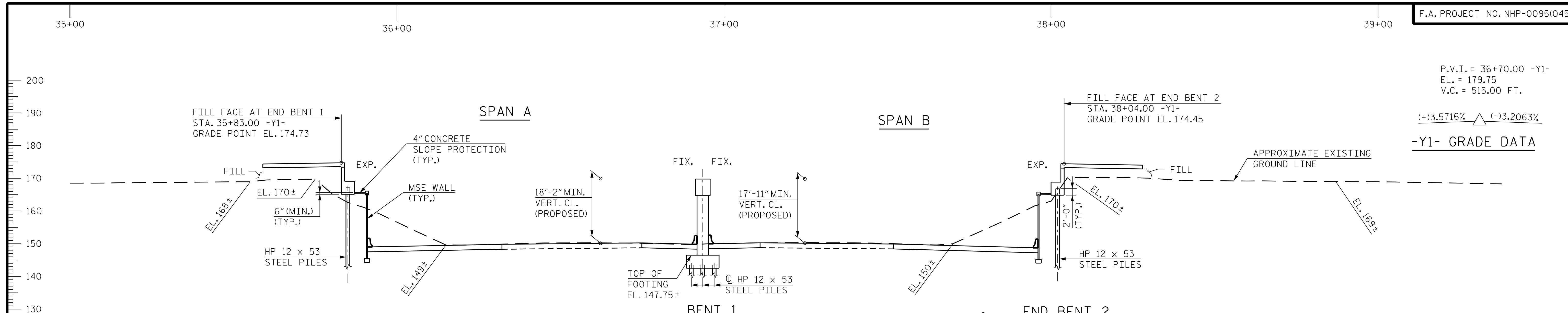


P.V.I. = 36+70.00 -Y1-
EL. = 179.75
V.C. = 515.00 FT.

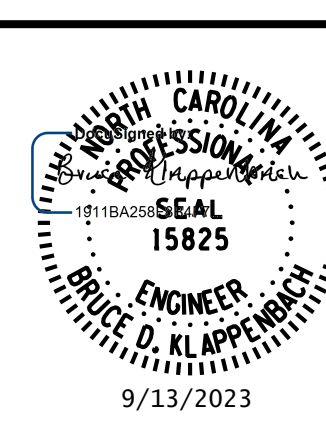
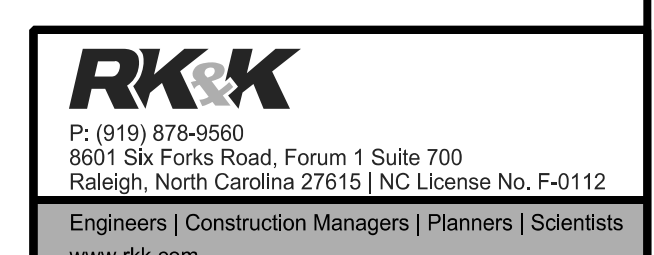
(+3.5716% (-)3.2063%
-Y1- GRADE DATA



DRAWN BY : B. A. HAAG DATE : JUN 2021
 CHECKED BY : B. D. KLAPPENBACH DATE : JUN 2021
 DESIGN ENGINEER OF RECORD : B. D. KLAPPENBACH DATE : JUN 2021

PT. OF MIN. VERT. CL.
 STA. 36+30.12 -Y1-, OFFSET 39'-7" RT.
 STA. 55+98.86 -L-, OFFSET 27'-0" LT.

PLAN
 (PILES NOT SHOWN FOR CLARITY)



PROJECT NO. I-5972
 JOHNSTON COUNTY
 STATION: 36+93.50 -Y1- =
 56+68.54 -L-
 SHEET 1 OF 4 REPLACES BRIDGE NO. 500066

STATE OF NORTH CAROLINA
 DEPARTMENT OF TRANSPORTATION
 RALEIGH
 GENERAL DRAWING
 FOR BRIDGE ON
 US 70 BUS (E. MARKET ST.)
 OVER I-95
 BETWEEN US 301 AND SR 2508

REVISIONS				SHEET NO.	
NO.	BY:	DATE:	NO.	BY:	DATE:
1			3		
2			4		

DOCUMENT NOT CONSIDERED FINAL
UNLESS ALL SIGNATURES COMPLETED

TOTAL SHEETS: 54