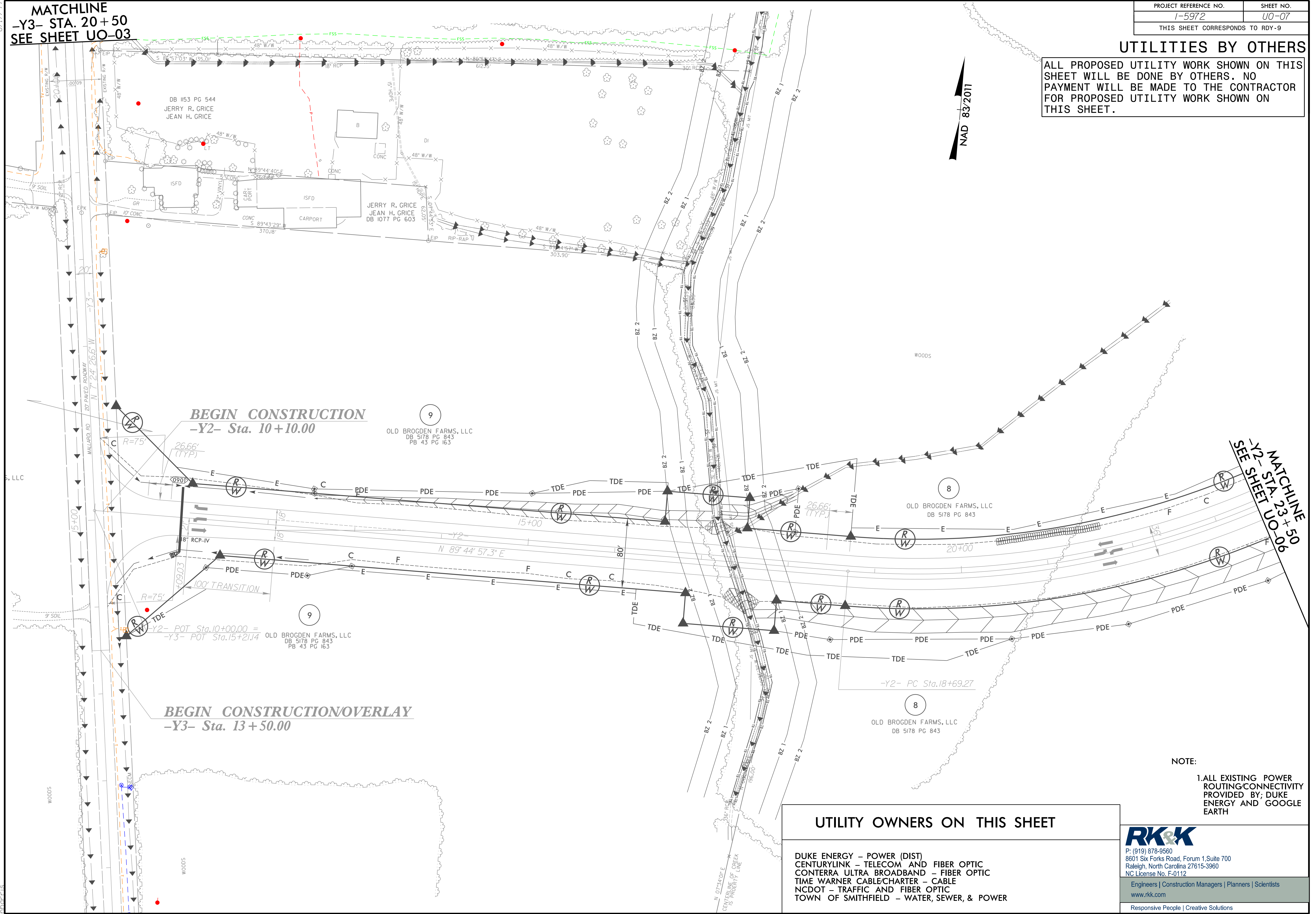


### UTILITIES BY OTHERS

ALL PROPOSED UTILITY WORK SHOWN ON THIS SHEET WILL BE DONE BY OTHERS. NO PAYMENT WILL BE MADE TO THE CONTRACTOR FOR PROPOSED UTILITY WORK SHOWN ON THIS SHEET.

8/17/19  
**MATCHLINE**  
**-Y3- STA. 20+50**  
**SEE SHEET UO-03**

NAD 83/2011



**MATCHLINE**  
**-Y2- STA. 23+50.00**  
**SEE SHEET UO-06**

### UTILITY OWNERS ON THIS SHEET

- DUKE ENERGY - POWER (DIST)
- CENTURYLINK - TELECOM AND FIBER OPTIC
- CONterra ULTRA BROADBAND - FIBER OPTIC
- TIME WARNER CABLE/CHARTER - CABLE
- NC DOT - TRAFFIC AND FIBER OPTIC
- TOWN OF SMITHFIELD - WATER, SEWER, & POWER

**NOTE:**  
 1. ALL EXISTING POWER ROUTING/CONNECTIVITY PROVIDED BY; DUKE ENERGY AND GOOGLE EARTH

**RK&K**  
 P: (919) 878-9560  
 8601 Six Forks Road, Forum 1, Suite 700  
 Raleigh, North Carolina 27615-3960  
 NC License No. F-0112  
 Engineers | Construction Managers | Planners | Scientists  
 www.rkk.com  
 Responsive People | Creative Solutions

I:\818121\bas\Engineering\UB01\Proj\15972-UT-rdy09-U007.dgn  
 8/17/19 10:42 AM  
 15972-UT-rdy09-U007.dwg