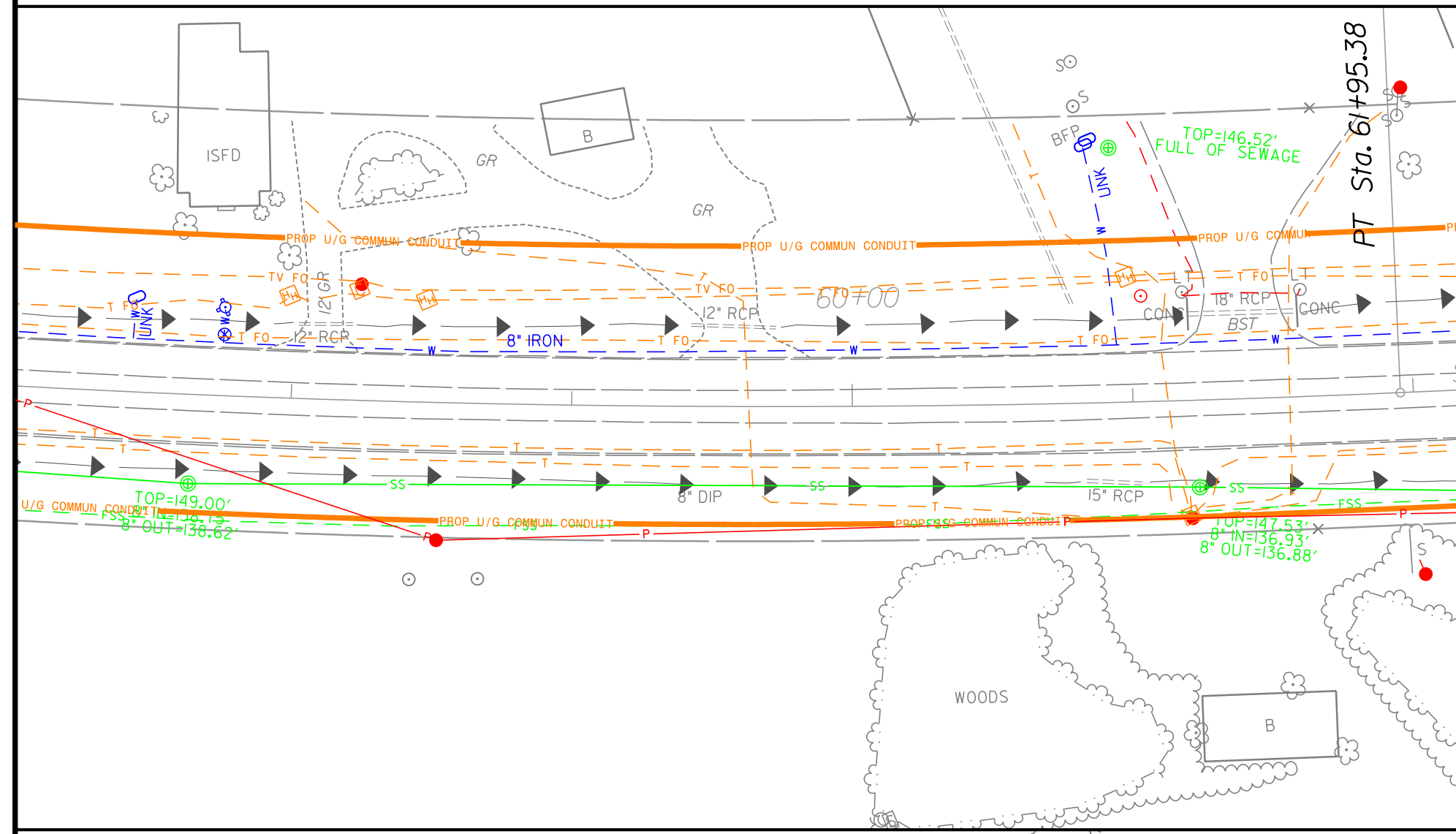


UTILITY OWNERS ON THIS SHEET
DUKE ENERGY – POWER (DIST)
CENTURYLINK – TELECOM AND FIBER OPTIC
CONTERRA ULTRA BROADBAND – FIBER OPTIC
TIME WARNER CABLE/CHARTER – CABLE
NCDOT – TRAFFIC AND FIBER OPTIC
TOWN OF SMITHFIELD – WATER, SEWER, & POWER

**UTILITIES BY OTHERS**

ALL PROPOSED UTILITY WORK SHOWN ON THIS SHEET WILL BE DONE BY OTHERS. NO PAYMENT WILL BE MADE TO THE CONTRACTOR FOR PROPOSED UTILITY WORK SHOWN ON THIS SHEET.

**NOTE:**  
 1. ALL EXISTING POWER ROUTING/CONNECTIVITY PROVIDED BY DUKE ENERGY AND GOOGLE EARTH



MATCHLINE INSET

MATCHLINE -Y2- STA. 23+50 SEE SHEET UO-07

I:\18\2021\Projects\UBO\Proj\I-5972\_Ut\_r-d\08\_U006.dgn

EXIST. UNDERGROUND PER CENTURYLINK TO REMAIN ACTIVE

NEW UNDERGROUND SPECTRUM CATV

NEW CONTERRA HANDHOLE

EXIST. HANDHOLE PER CENTURYLINK

UG CENTURYLINK TO BE ABANDONED

NEW CENTURYLINK PEDESTAL

SLACK SPAN CONCRETE ISLAND  
 EXIST. UNDERGROUND PER CONTERRA

NEW AERIAL SPECTRUM CATV AND CENTURYLINK FIBER

NEW CENTURYLINK DIRECTIONAL BORE

S-51 #AOWSV CAN'T FIND END?

NEW OVERHEAD SPECTRUM CATV AND CENTURYLINK FIBER

NEW CENTURYLINK CROSS CONNECT

NEW CENTURYLINK HANDHOLE

NEW CENTURYLINK DIRECTIONAL BORE 10' UNDER ROAD

NEW OVERHEAD SPECTRUM CATV

NEW UNDERGROUND SPECTRUM CATV

OLD BROGDEN FARMS, LLC  
 DB 5178 PG 843

**END CONSTRUCTION  
 END PROJECT I-5972  
 -Y1- Sta. 56+50.00**

MATCHLINE INSET



MATCHLINE -Y1- STA. 47+00 SEE SHEET UO-03

-Y2- PT Sta. 29+89.11

-Y1- POT Sta. 55+34.20 =  
 -Y2- POT Sta. 33+77.30

-Y1- PC Sta. 55+53.58

8

8

15

3

OLD BROGDEN FARMS II, LLC  
 DB 5185 PG 371  
 PB-84 PG 451

REBECCA  
 DB 1745 F  
 DB 1105

JOHN T. HUGHES  
 JAMES W. HUGHES  
 DB 1882 PG 53

7  
 ISBK BUS  
 JOHNSTON COUNTY BOARD OF EDUCATION  
 DEED BOOK 803  
 PAGE 229

JAMIE SUE STRICKLAND  
 DB 569 PG 41

JAMIE H. STRICKLAND  
 GINGER H. ROHRBAUGH  
 DB 4668 PG 188

8  
 OLD BROGDEN FARMS, LLC  
 DB 5178 PG 843

8  
 OLD BROGDEN FARMS, LLC  
 DB 5178 PG 843