

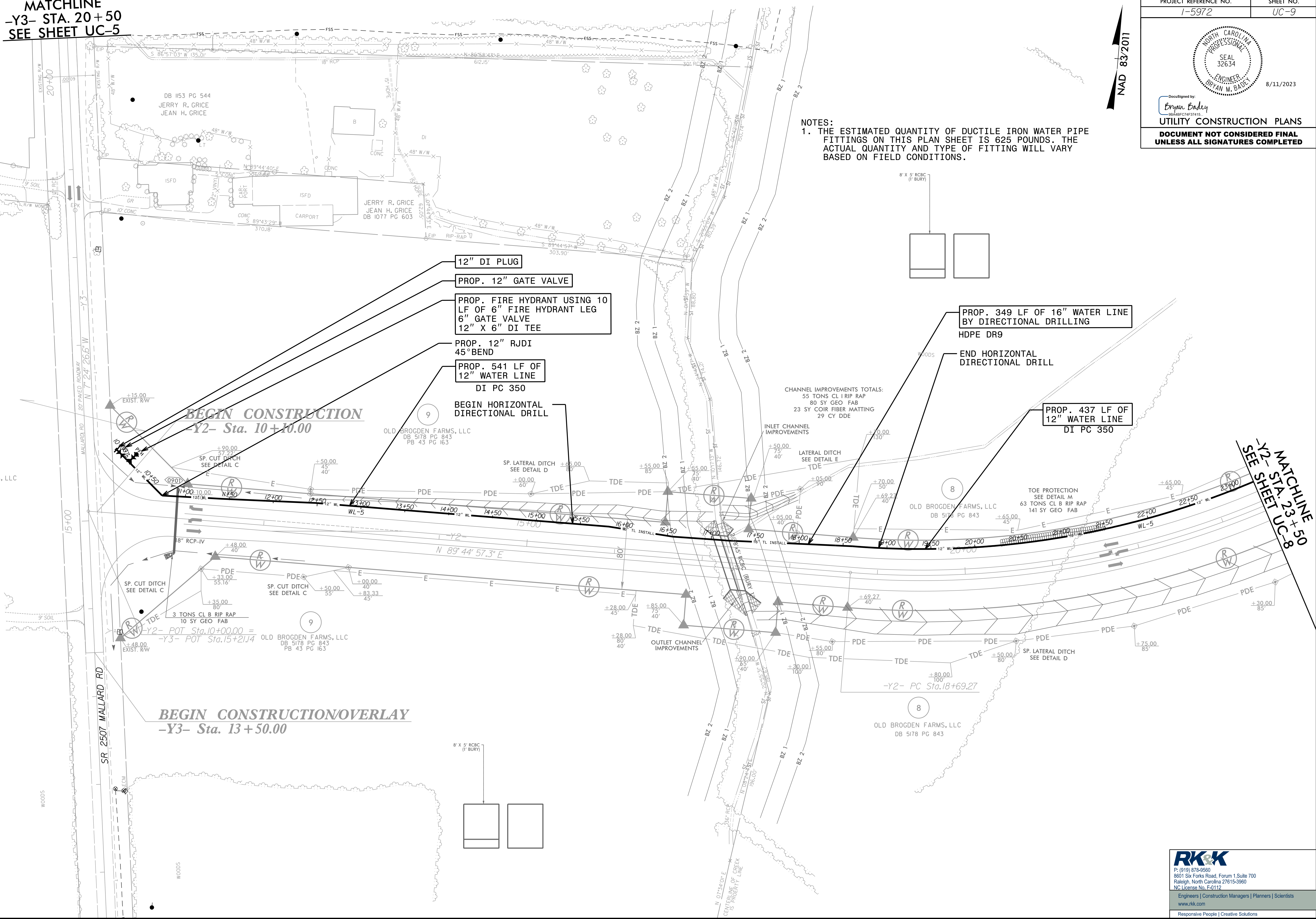
DocuSigned by:
Bryan Baldy
 90A4BFC74F37415
UTILITY CONSTRUCTION PLANS
DOCUMENT NOT CONSIDERED FINAL
UNLESS ALL SIGNATURES COMPLETED

NAD 83/2011

NOTES:
 1. THE ESTIMATED QUANTITY OF DUCTILE IRON WATER PIPE FITTINGS ON THIS PLAN SHEET IS 625 POUNDS. THE ACTUAL QUANTITY AND TYPE OF FITTING WILL VARY BASED ON FIELD CONDITIONS.

MATCHLINE
 -Y3- STA. 20+50
 SEE SHEET UC-5

8/17/23



8:\Users\j\Documents\Engineering\UC\Proj\15972-ut-rdy\9-UC9_psh.dgn
 8/17/23
 jborder