

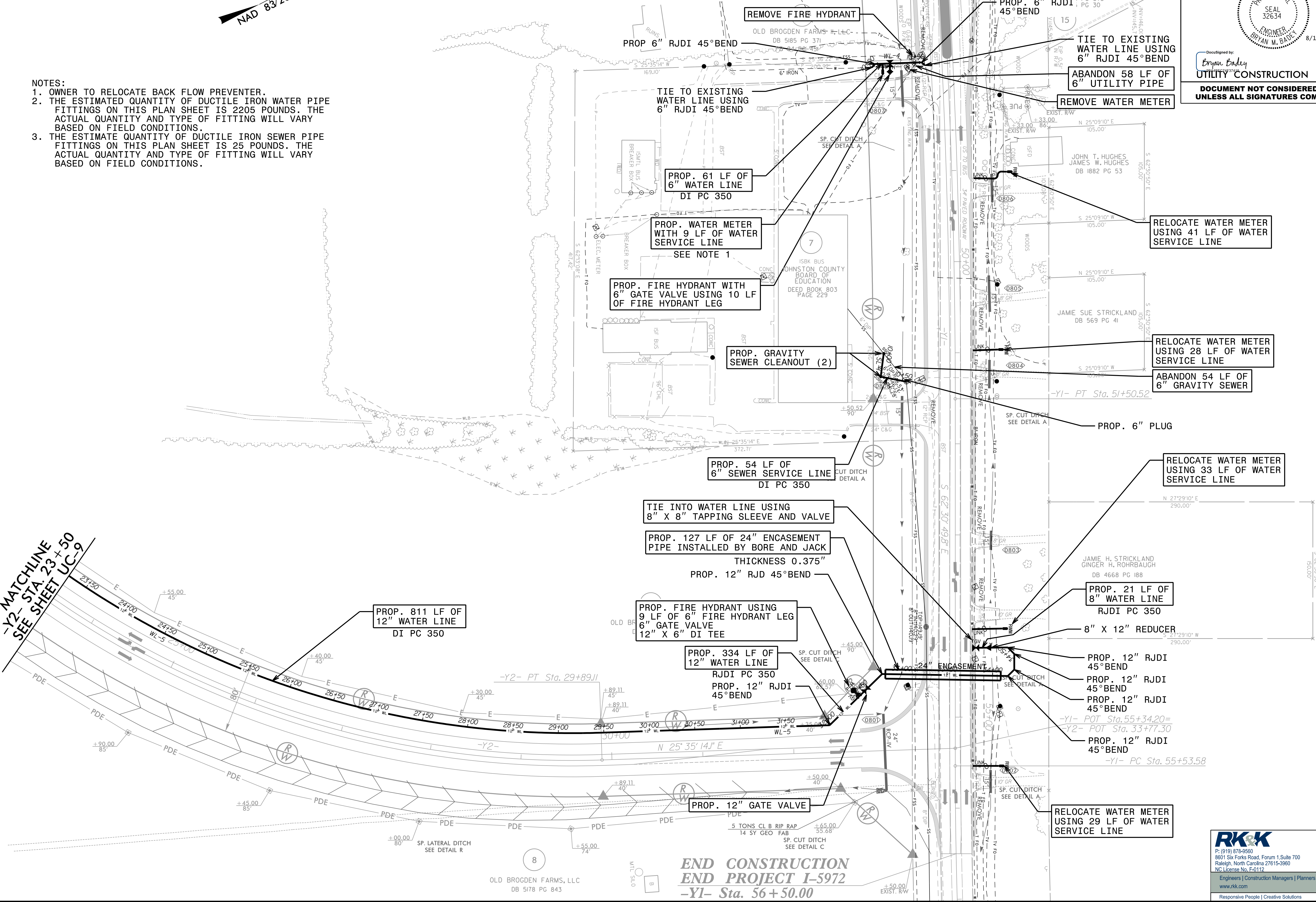
DocuSigned by:
Bryan Bailey
 ENGINEER
 UTILITY CONSTRUCTION PLANS
 DOCUMENT NOT CONSIDERED FINAL
 UNLESS ALL SIGNATURES COMPLETED



- NOTES:**
- OWNER TO RELOCATE BACK FLOW PREVENTER.
 - THE ESTIMATED QUANTITY OF DUCTILE IRON WATER PIPE FITTINGS ON THIS PLAN SHEET IS 2205 POUNDS. THE ACTUAL QUANTITY AND TYPE OF FITTING WILL VARY BASED ON FIELD CONDITIONS.
 - THE ESTIMATE QUANTITY OF DUCTILE IRON SEWER PIPE FITTINGS ON THIS PLAN SHEET IS 25 POUNDS. THE ACTUAL QUANTITY AND TYPE OF FITTING WILL VARY BASED ON FIELD CONDITIONS.

MATCHLINE -Y1- STA. 47+00 SEE SHEET UC-5

MATCHLINE -Y2- STA. 23+50 SEE SHEET UC-9



**END CONSTRUCTION
 END PROJECT I-5972
 -Y1- Sta. 56+50.00**

RK&K
 P: (919) 378-9550
 8601 Six Forks Road, Forum 1, Suite 700
 Raleigh, North Carolina 27615-3960
 NC License No. F-0112
 Engineers | Construction Managers | Planners | Scientists
 www.rk.com
 Responsive People | Creative Solutions

8/17/2023 8:11:05 AM C:\Users\Engineering\OneDrive\Projects\15972-ut-rd\18_UC8_psh.dgn