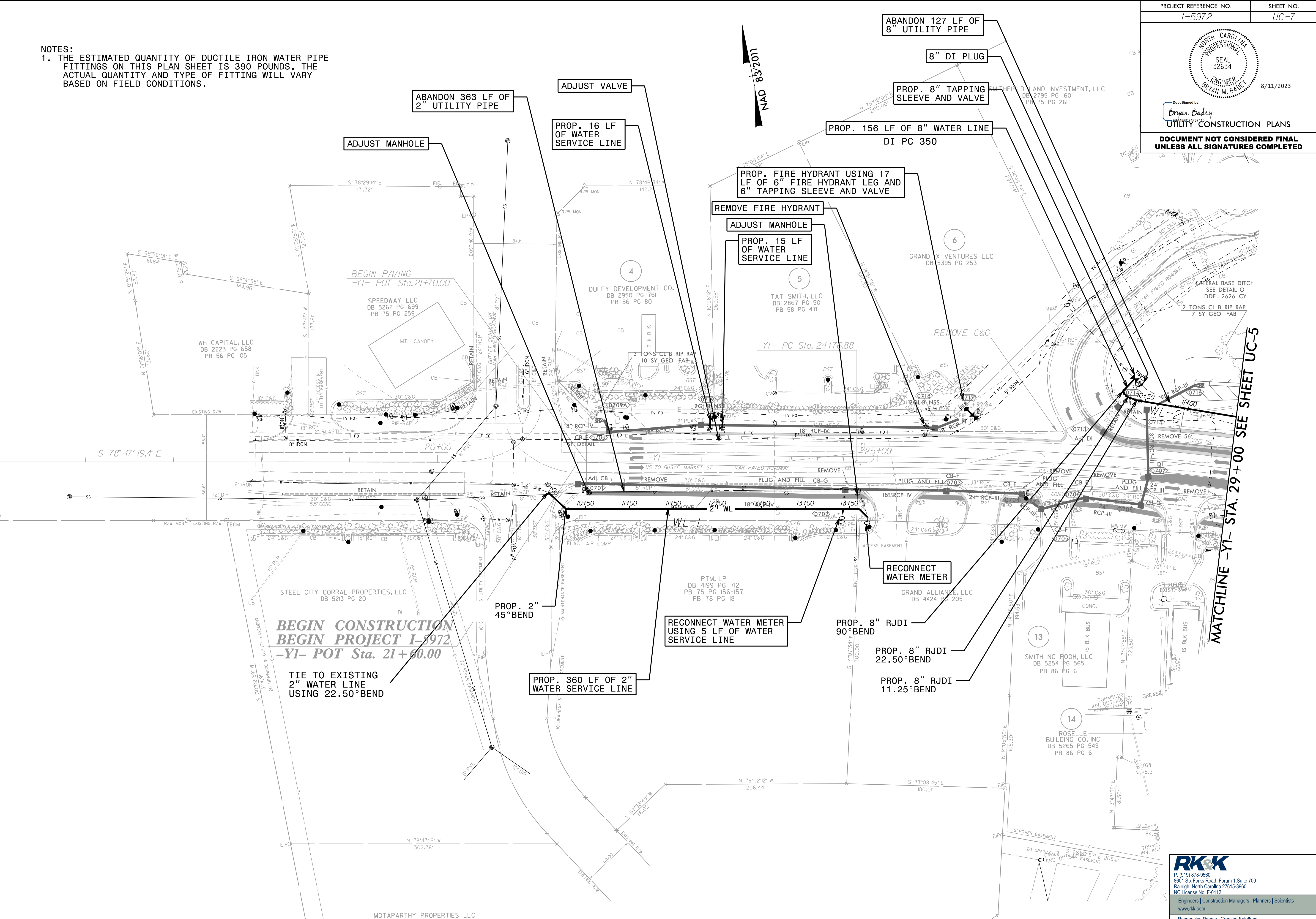


8/11/2023
 Documented by: *Bryan Bailey*
 UTILITY CONSTRUCTION PLANS
DOCUMENT NOT CONSIDERED FINAL UNLESS ALL SIGNATURES COMPLETED

NOTES:
 1. THE ESTIMATED QUANTITY OF DUCTILE IRON WATER PIPE FITTINGS ON THIS PLAN SHEET IS 390 POUNDS. THE ACTUAL QUANTITY AND TYPE OF FITTING WILL VARY BASED ON FIELD CONDITIONS.



MATCHLINE -YI- STA. 29+00 SEE SHEET UC-5

8/17/2023
 R:\Projects\Engineering\UC\Proj\15972-ut-rdy7-UC7_psh.dgn
 8/17/23