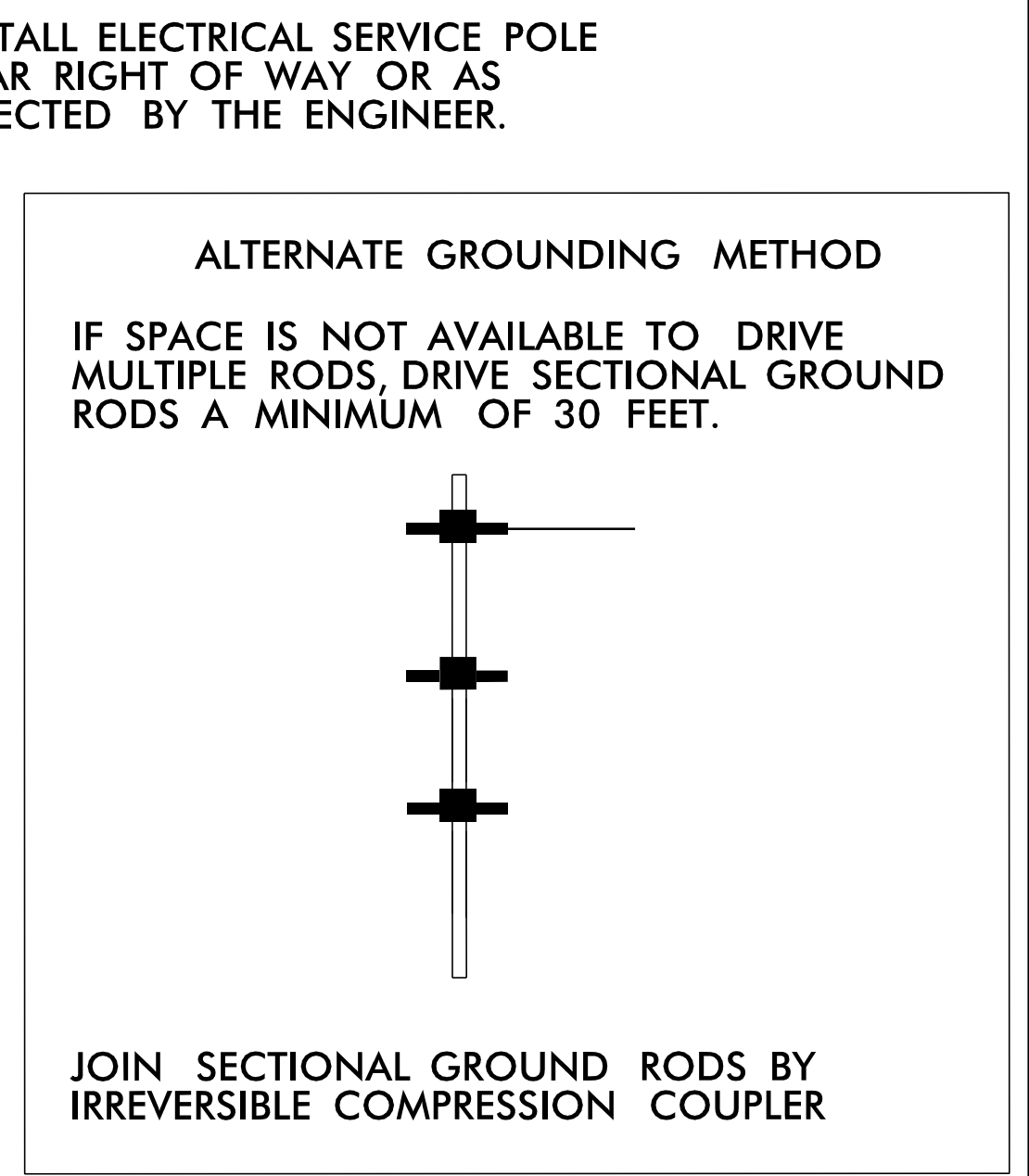
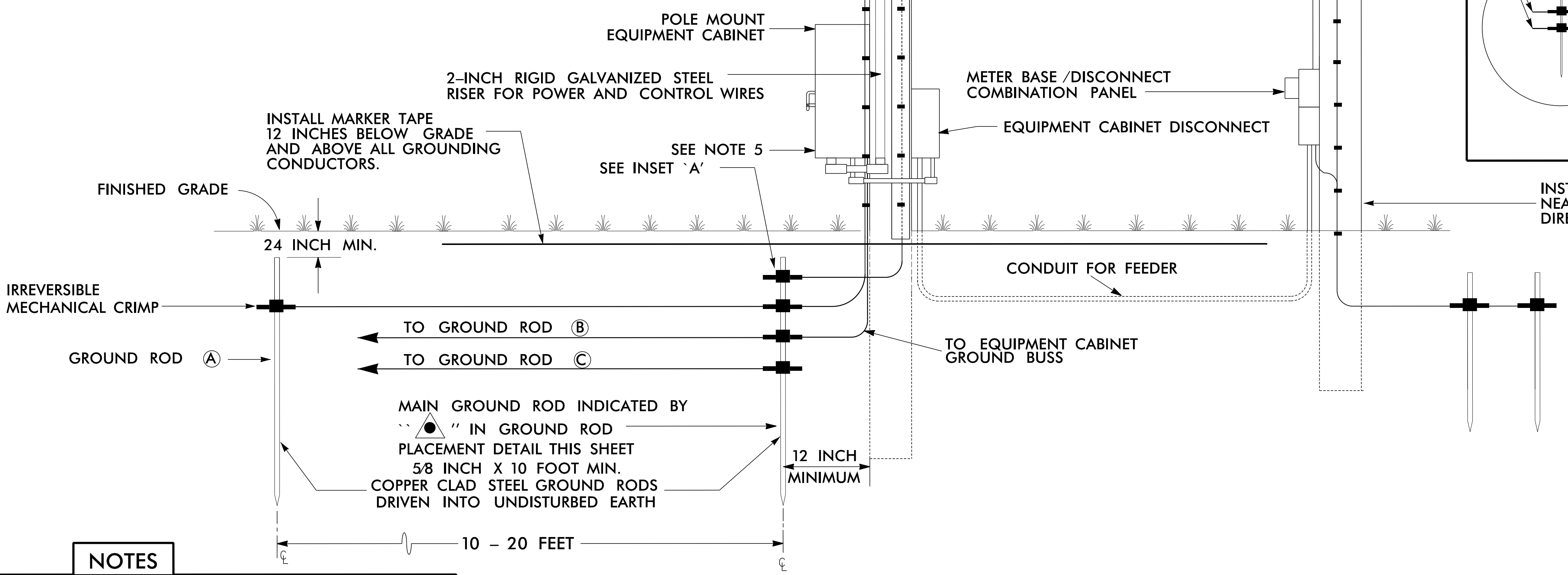
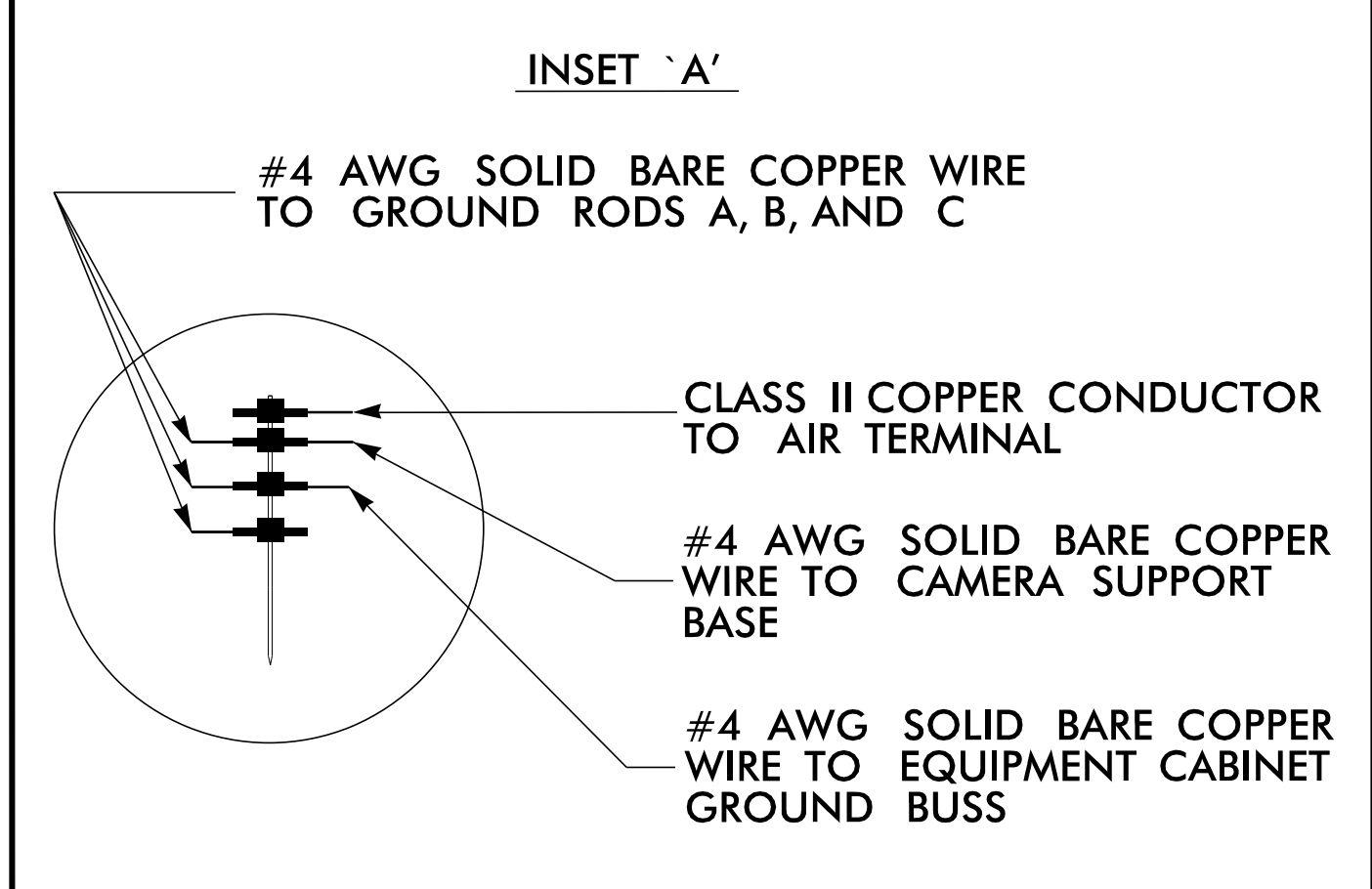


BOND #4 AWG SOLID BARE COPPER WIRE TO CAMERA SUPPORT BASE BY AN ALUMINUM TO COPPER #2 - #14 AWG LUG. ATTACH TO CAMERA BASE WITH A STAINLESS STEEL SELF TAPPING SCREW. REMOVE PAINT OR PROTECTIVE COATING WHERE ATTACHING LUG ONLY.

INSTALL 2-INCH PVC U-GUARD OVER COPPER CONDUCTOR FROM GROUND LEVEL TO 10 FEET (MINIMUM) ABOVE THE GROUND.



**NOTES**

- BOND CLASS II, 28 STRAND (MINIMUM), 15 AWG (MINIMUM) ROPE-LAY BARE COPPER CONDUCTOR TO THE MAIN GROUND ROD BY AN IRREVERSIBLE MECHANICAL CRIMP. MAINTAIN MAXIMUM HORIZONTAL SEPARATION BETWEEN COPPER CONDUCTOR AND RISER.
- ALL CONNECTIONS TO GROUND RODS SHOULD BE MADE WITH AN IRREVERSIBLE MECHANICAL CRIMP METHOD.
- REFER TO STANDARD DRAWING 1700.02 FOR ALTERNATE GROUND ROD INSTALLATION METHOD AS APPROVED BY THE ENGINEER.
- INSTALL MARKER TAPE DIRECTLY ABOVE ALL GROUNDING ELECTRODES AND CONDUCTORS AT A DEPTH OF 12 INCHES.
- REMOVE BONDING JUMPER BETWEEN EQUIPMENT CABINET GROUND BUSS AND NEUTRAL BUSS.

**DOCUMENT NOT CONSIDERED FINAL UNLESS ALL SIGNATURES COMPLETED**

**RK&K**  
P: (919) 878-8560  
8801 Six Forks Road Suite 700 | Raleigh, North Carolina 27615-2965  
NC License No. F-0112  
www.rk.com  
Responsive People | Creative Solutions

Prepared for the Offices of:  
Transportation, Mobility and Safe Interchange  
NORTH CAROLINA DEPARTMENT OF TRANSPORTATION  
750 N. Greenfield Pkwy., Garner, NC 27529

**CCTV CAMERA INSTALLATION FOR WOOD POLES WITH UNDERGROUND ELECTRICAL SERVICE & EQUIPMENT CABINET DISCONNECT TYPICAL DETAIL**

DIVISION 04 Johnston County Smithfield  
PLAN DATE: September 2023 REVIEWED BY: WPERickson-Jones  
PREPARED BY: DTSears REVIEWED BY:

REVISIONS	INIT.	DATE

SCALE: N/A

Seal: NORTH CAROLINA PROFESSIONAL ENGINEER DAVID T. SEARS SEAL 044558  
Designed by David T. Sears 9/19/2023  
Signature: DAVID T. SEARS  
CADD Filename: