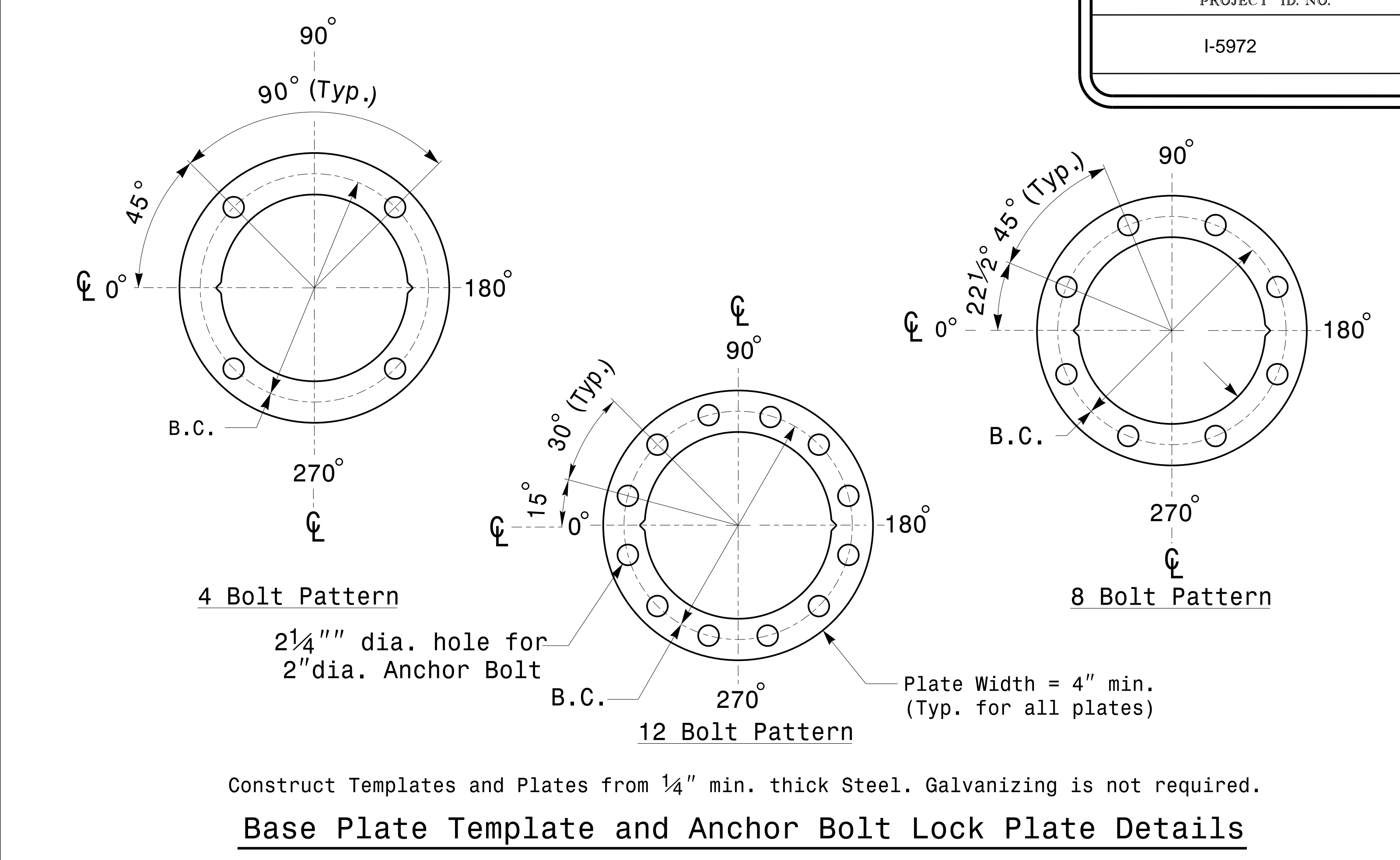
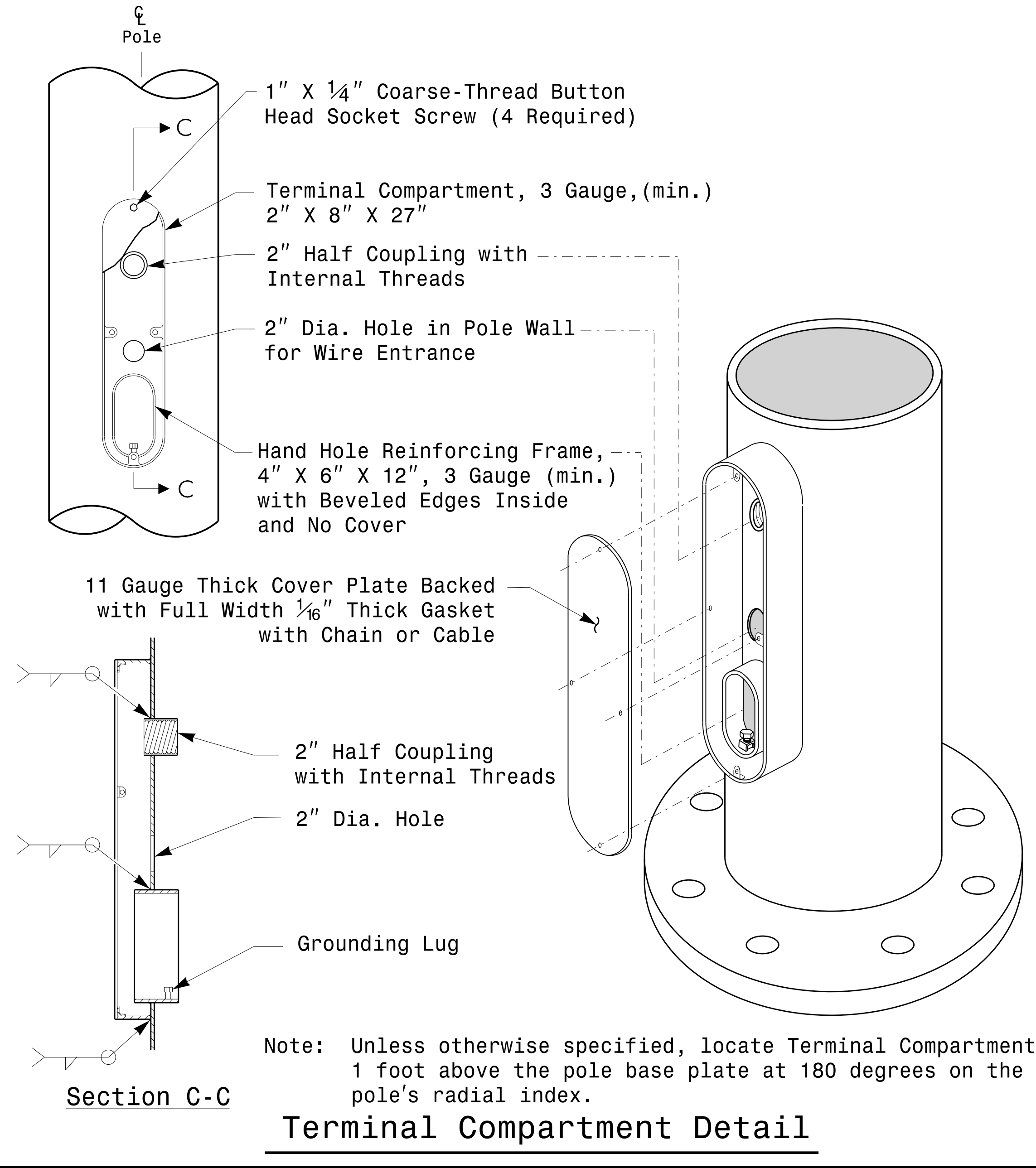


PROJECT ID. NO.	SHEET NO.
I-5972	Sig.M2

Fabrication Details – All Metal Poles



Identification Tag Details

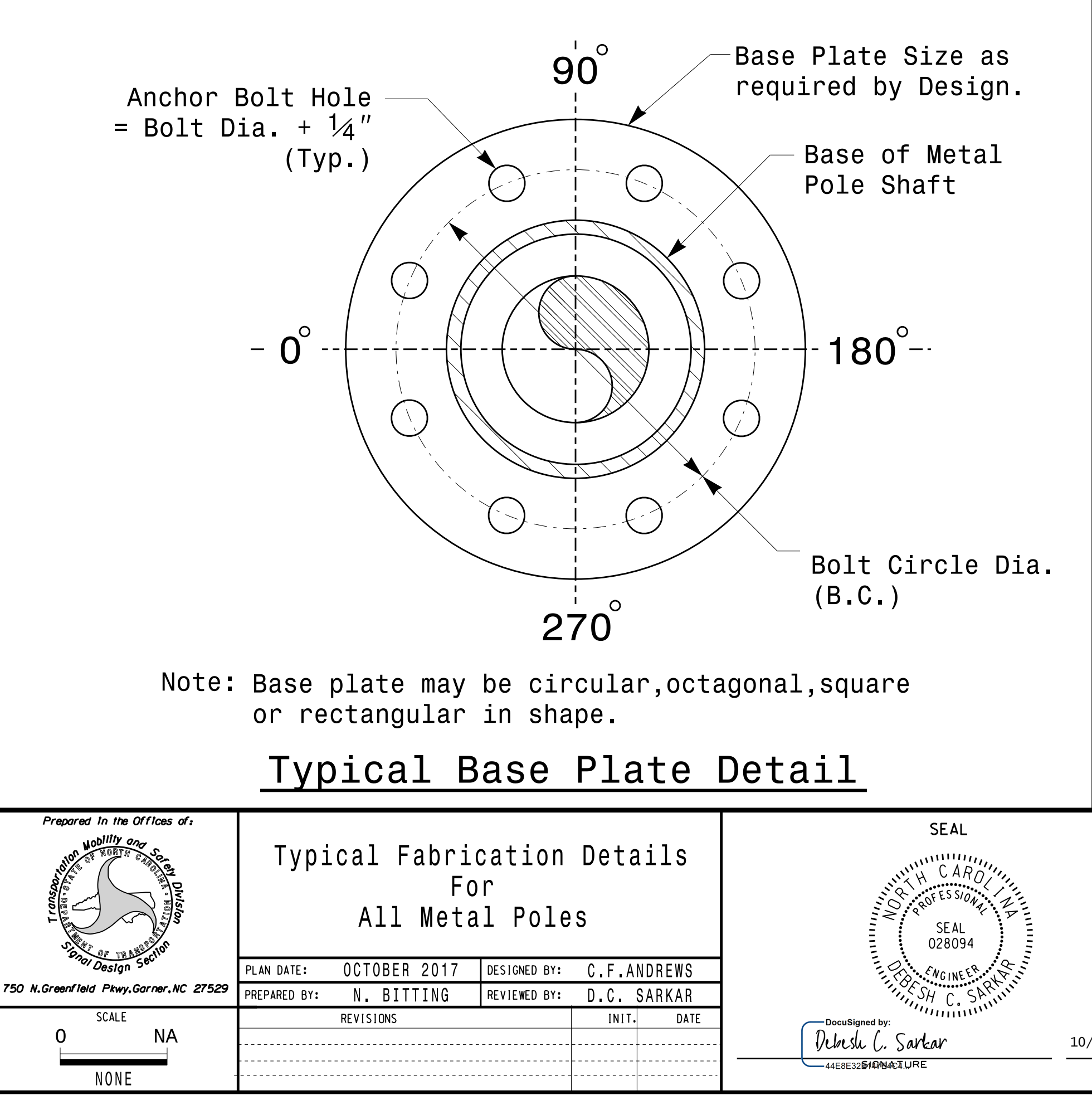
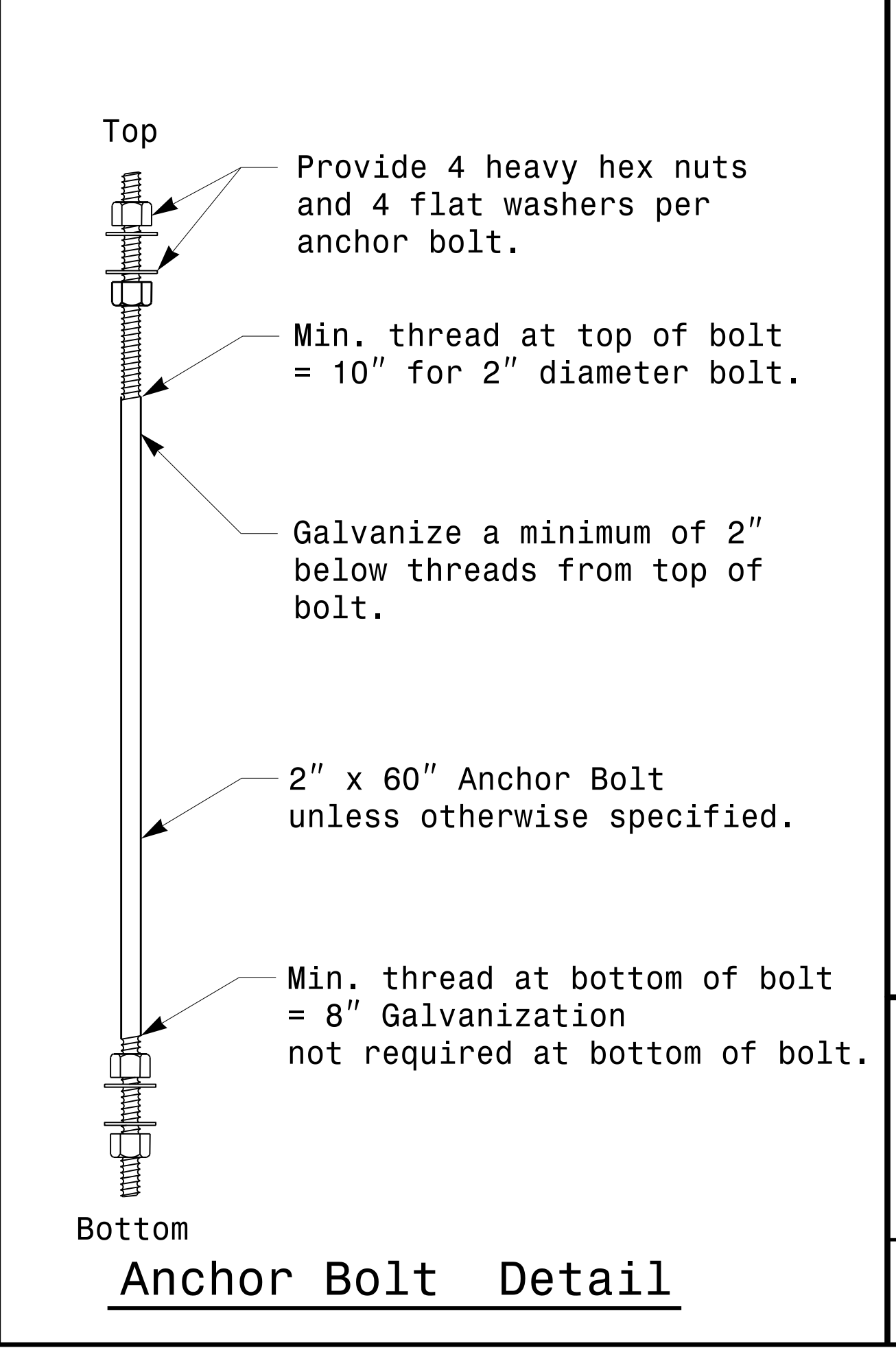
MFG _____ MFG. DATE: MM/YY	MFG _____ MFG. DATE: MM/YY
SHAFT D/T/L/Y _____	SECTION D/T/L/Y _____
ARM-A D/T/L/Y _____	NCDOT SIG. INV. NO. _____
ARM-B D/T/L/Y _____	NCDOT POLE NO. _____
A.B. DIA./B.C./L/Y _____	
NCDOT SIG. INV. NO. _____	
NCDOT POLE NO. _____	

Shaft I.D. Tag
(Provide on Shaft of Strain Poles and Mast Arm Poles Shaft)

Arm I.D. Tag
(Provide on each section of a multi-section mast arm.)

Notes:

- 1) D= Diameter, T= Thickness, L= Length, Y= Yield Strength
- 2) A.B. = Anchor Bolt
- 3) B.C. = Bolt Circle of Anchor Bolts
- 4) If Custom Design, use "NCDOT STANDARD" line for Signal Inv. Number and pole I.D. number
- 5) See drawing M3 and M4 for mounting positions of I.D. tags.



Prepared in the Offices of:

Typical Fabrication Details For All Metal Poles

750 N. Greenfield Pkwy, Garner, NC 27529

PLAN DATE: OCTOBER 2017	DESIGNED BY: C.F. ANDREWS
PREPARED BY: N. BITTING	REVIEWED BY: D.C. SARKAR
REVISIONS	INITIALS DATE

SCALE: 0 NONE

Seal: NORTH CAROLINA PROFESSIONAL ENGINEER SEAL 028094 DEBESH C. SARKAR

DocuSigned by: *Debash C. Sarkar* 10/11/2017 DATE

11-001-2017-08:30 1156504115 Signal&Sign Design Section Eastern Region 1156504115 Signal&Sign Detail: Sig.M2 51d. Fabrication Detail: Sig.M2.dgn