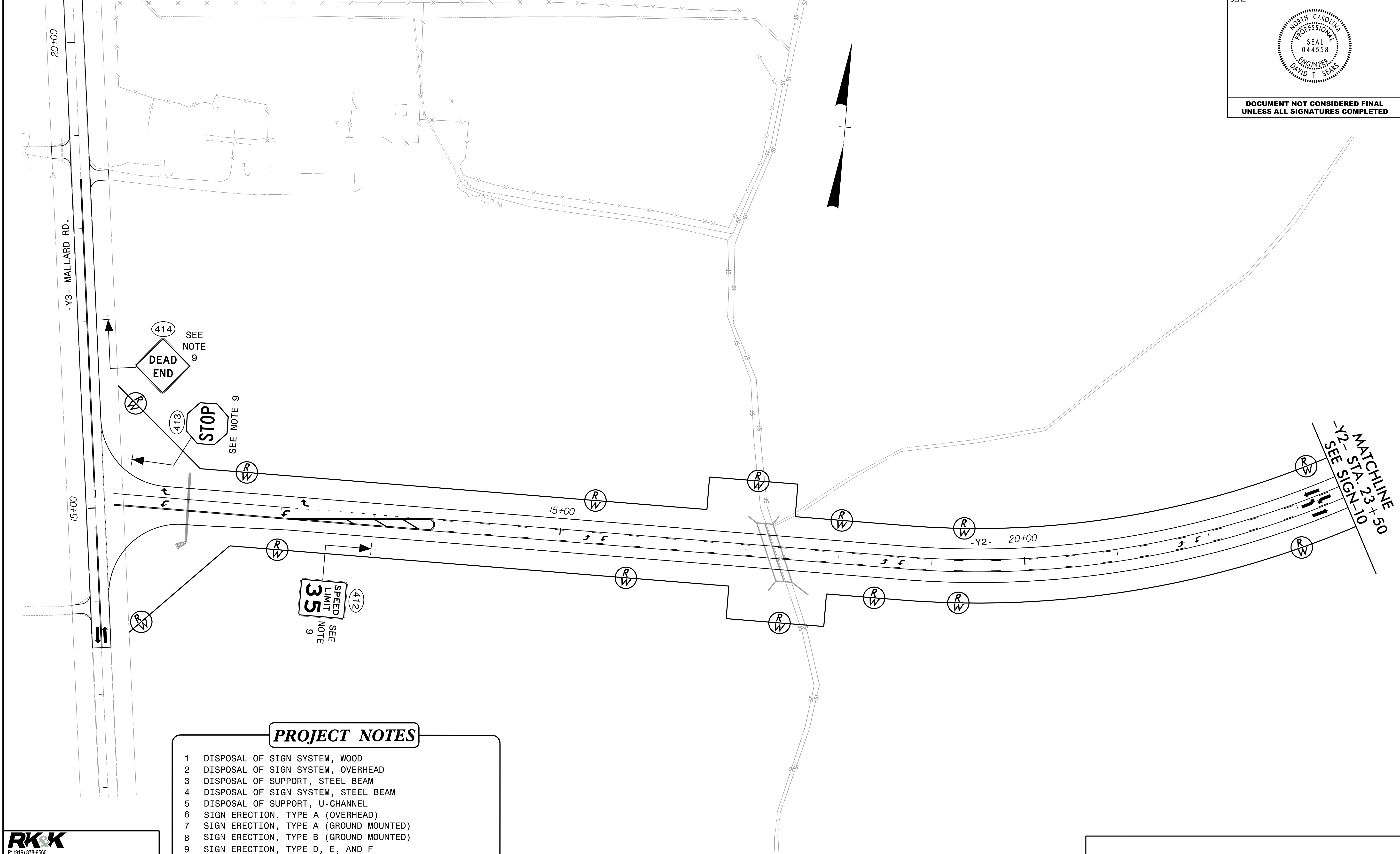


**DOCUMENT NOT CONSIDERED FINAL
UNLESS ALL SIGNATURES COMPLETED**

MATCHLINE
 -Y3- STA. 20+50
 SEE SIGN-7,7A



PROJECT NOTES

- 1 DISPOSAL OF SIGN SYSTEM, WOOD
- 2 DISPOSAL OF SIGN SYSTEM, OVERHEAD
- 3 DISPOSAL OF SUPPORT, STEEL BEAM
- 4 DISPOSAL OF SIGN SYSTEM, STEEL BEAM
- 5 DISPOSAL OF SUPPORT, U-CHANNEL
- 6 SIGN ERECTION, TYPE A (OVERHEAD)
- 7 SIGN ERECTION, TYPE A (GROUND MOUNTED)
- 8 SIGN ERECTION, TYPE B (GROUND MOUNTED)
- 9 SIGN ERECTION, TYPE D, E, AND F
- 10 SIGN ERECTION, MILEMARKERS
- 11 SIGN ERECTION, RELOCATE SIGN TYPE A (GROUND MOUNTED)
- 12 SIGN ERECTION, RELOCATE SIGN TYPE D

PROPOSED SIGNS

RK&K
 P: (919) 878-0500
 8601 Six Forks Road, Forum 1, Suite 700
 Raleigh, North Carolina 27615-3960
 NC License No. F-41112
 Engineers | Construction Managers | Planners | Scientists
 www.rkk.com
 Responsive People | Creative Solutions

08/19/23
I-5972-SIGN-ps011.dgn