
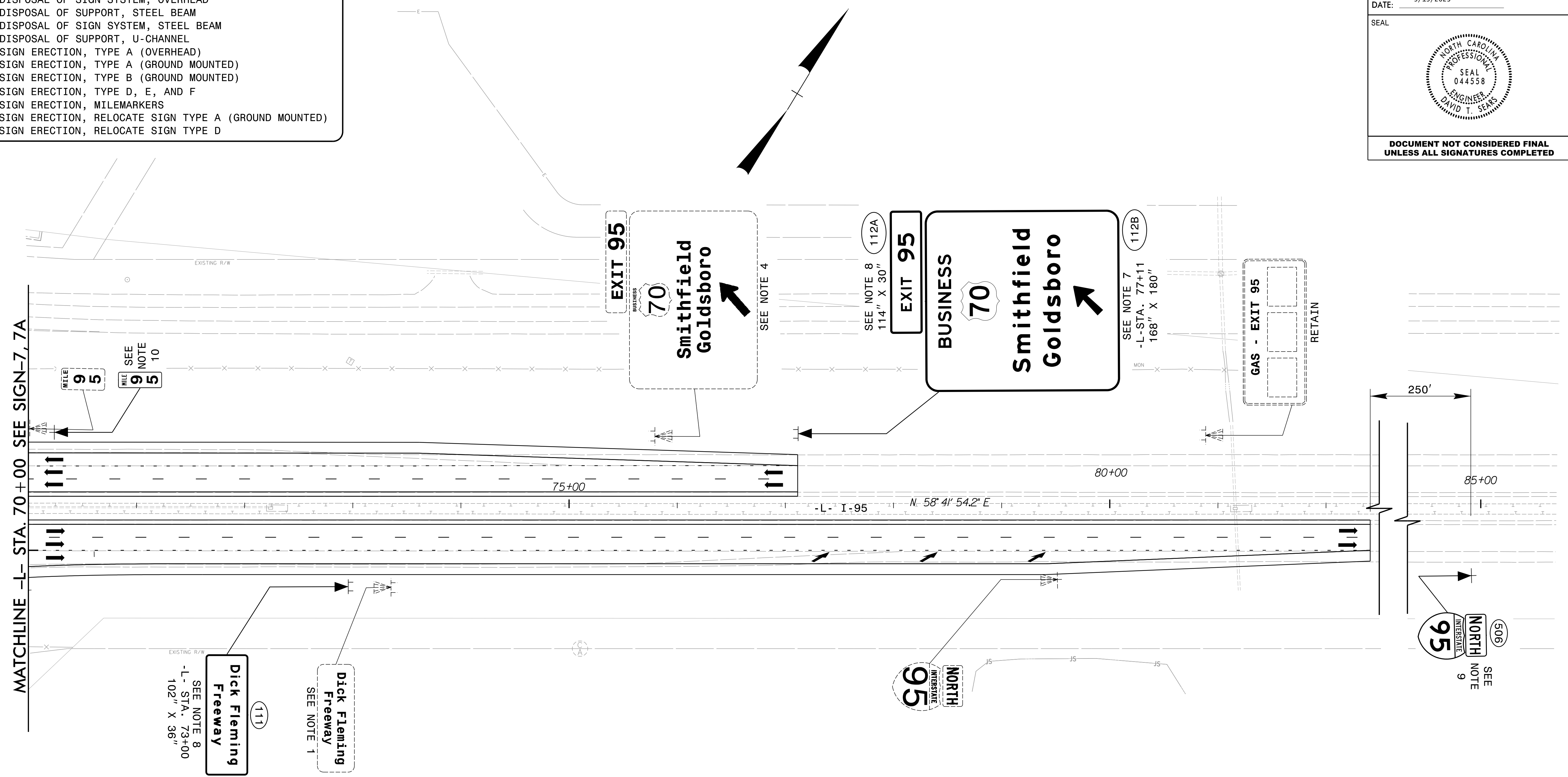


**PROJECT NOTES**

- 1 DISPOSAL OF SIGN SYSTEM, WOOD
- 2 DISPOSAL OF SIGN SYSTEM, OVERHEAD
- 3 DISPOSAL OF SUPPORT, STEEL BEAM
- 4 DISPOSAL OF SIGN SYSTEM, STEEL BEAM
- 5 DISPOSAL OF SUPPORT, U-CHANNEL
- 6 SIGN ERECTION, TYPE A (OVERHEAD)
- 7 SIGN ERECTION, TYPE A (GROUND MOUNTED)
- 8 SIGN ERECTION, TYPE B (GROUND MOUNTED)
- 9 SIGN ERECTION, TYPE D, E, AND F
- 10 SIGN ERECTION, MILEMARKERS
- 11 SIGN ERECTION, RELOCATE SIGN TYPE A (GROUND MOUNTED)
- 12 SIGN ERECTION, RELOCATE SIGN TYPE D

PROJECT REFERENCE NO. <b>I-5972</b>	SHEET NO. <b>SIGN-8</b>
APPROVED: <i>David T. Seals</i> 09193P28E5741E DATE: 9/19/2023	
SEAL 	
<b>DOCUMENT NOT CONSIDERED FINAL UNLESS ALL SIGNATURES COMPLETED</b>	



**EXISTING & PROPOSED SIGNS**

09/19/23  
I-5972\_SIGN\_psh08.dgn



P: (919) 878-0560  
8601 Six Forks Road, Forum 1, Suite 700  
Raleigh, North Carolina 27615-3960  
NC License No. F-41112

Engineers | Construction Managers | Planners | Scientists  
www.rkk.com  
Responsive People | Creative Solutions